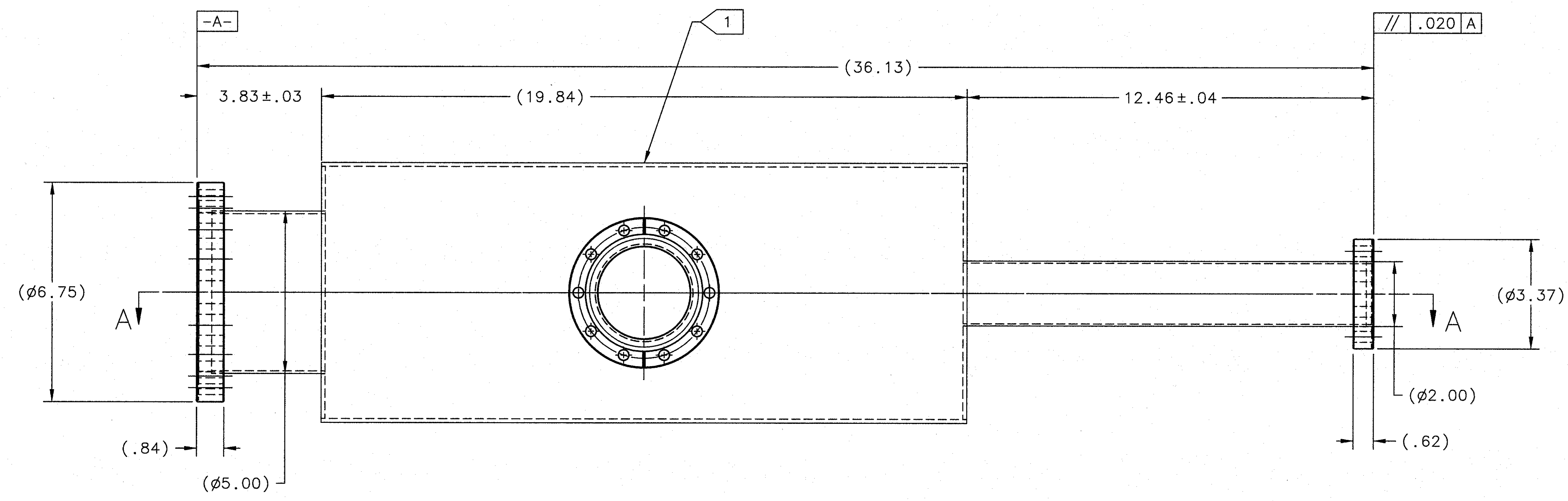
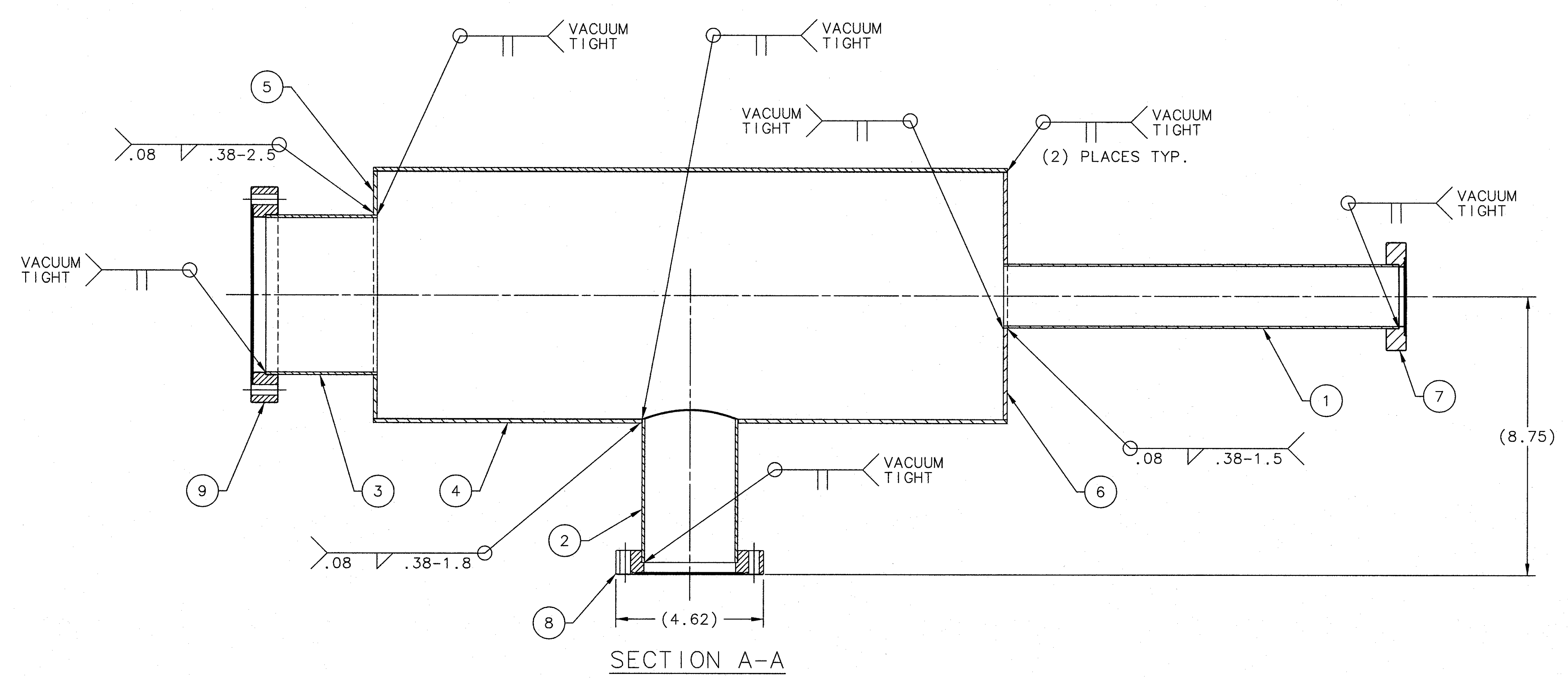


ISOMETRIC VIEW  
SCALE : 1/4



NOTES:

1. STENCIL "D00000-02-01-1007" AT APPROX. LOCATION SHOWN IN .50" MIN. CHARACTERS, BLACK PAINT.
2. THE FOLLOWING JLAB SPECIFICATIONS APPLY:  
 FABRICATION OF UHV EQUIPMENT : : : : : 22631-S-001 REV B  
 CLEANING AND HANDLING OF UHV COMPONENTS : : : : : 22632-S-001 REV E  
 WELDING SPECIFICATION FOR UHV COMPONENTS : : : : : 22633-S-001 REV A  
 HELIUM LEAK TEST PROCEDURE FOR UHV COMPONENTS : : : : : 22634-S-001 REV A
3. CERTIFICATION OF MATERIAL MUST BE ACCOMPANIED WITH DELIVERY.
4. SUGGESTED SOURCE OR JLAB APPROVED EQUIVALENT:  
 A. MDC VACUUM PROD. (800)443-8817 www.mdcvacuum.com

QTY	ITEM	PART OR IDENTIFYING NO.	QUANTITY OR DESCRIPTION	MATERIAL SPECIFICATION	NOTES
1	9	MDC PART No. 110029	DEL-SEAL CF FLANGE 6.75 OD, CL, NR, 5.01 BORE	STAINLESS STEEL TYPE 304	4A
1	8	MDC PART No. 110024	DEL-SEAL CF FLANGE 4.58 OD, CL, NR, 3.01 BORE	STAINLESS STEEL TYPE 304	4A
1	7	MDC PART No. 110017	DEL-SEAL CF FLANGE 3.38 OD, CL, NR, 2.01 BORE	STAINLESS STEEL TYPE 304	4A
1	6	D00000-02-01-2045	VACUUM CHAMBER RIGHT FLANGE		
1	5	D00000-02-01-2044	VACUUM CHAMBER LEFT FLANGE		
1	4	D00000-02-01-2043	TUBE 8.00 OD X .12 WALL		
1	3		TUBE STUB, SEAMLESS, 5.00 OD X .083 WALL	STAINLESS STEEL TYPE 304	
1	2	D00000-02-01-2042	TUBE STUB, SEAMLESS, 3.00 OD X .083 WALL		
1	1		TUBE 2.00 OD X .065 WALL	STAINLESS STEEL TYPE 304	

FOR JLAB INTERNAL USE ONLY ALL WELDS ON THIS DRAWING ARE AS DEFINED BY JLAB ES & H MANUAL CHAPTER 6122 App. 16.		DOCUMENT CONTROL STAMP <b>IQG</b>	DIM & TOL PER ASME Y14.5-2018 UNLESS OTHERWISE SPECIFIED DIMENSIONS ARE IN INCHES FRACTIONS DECIMAL ANGLES ± 1/4" ± .01" ± .50"	TRACKING NO. N/A	United States Department of Energy
WELD CLASS C	WELD SPECIFICATION SEE NOTE 2	MATERIAL SEE PARTS LIST	THIRD ANGLE PROJECTION	APPROVALS DRAWN R. GIZ CHECKED [Signature] APPROVED [Signature]	DATE 12/11/11 3 Nov 11 3 Nov 11
FINISH MACHINED SURFACES DEBURR & BREAK ALL SHARP EDGES UNLESS OTHERWISE NOTED DO NOT SCALE DRAWING			Jefferson Lab Thomas Jefferson National Accelerator Facility Newport News Virginia	HALL D GLUE-X BEAMLINE COLLIMATOR ALCOVE VACUUM CHAMBER ASSEMBLY	
			SCALE 1:2	SIZE DWG. NO. E D00000-02-01-1007	REV. -