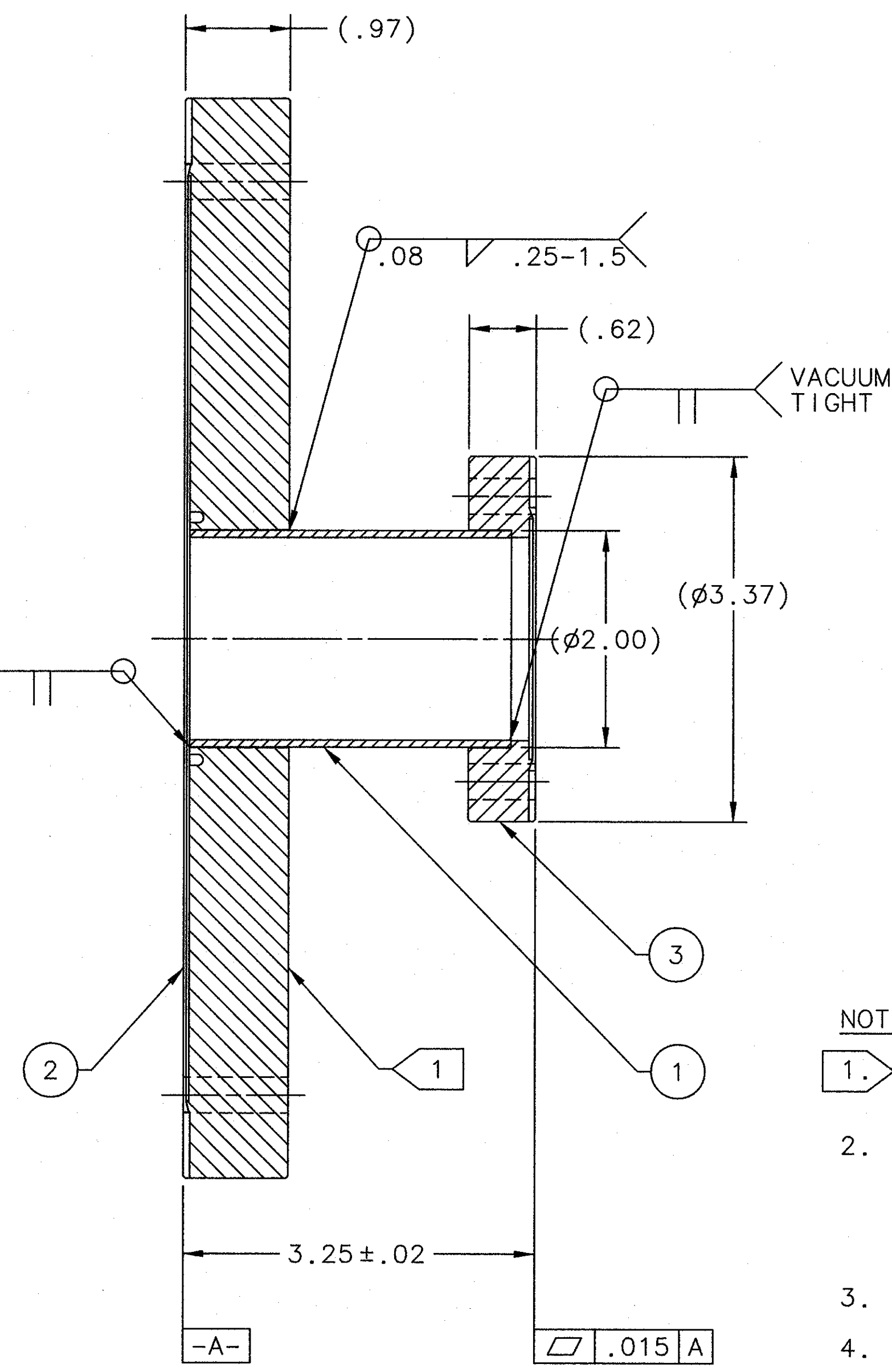
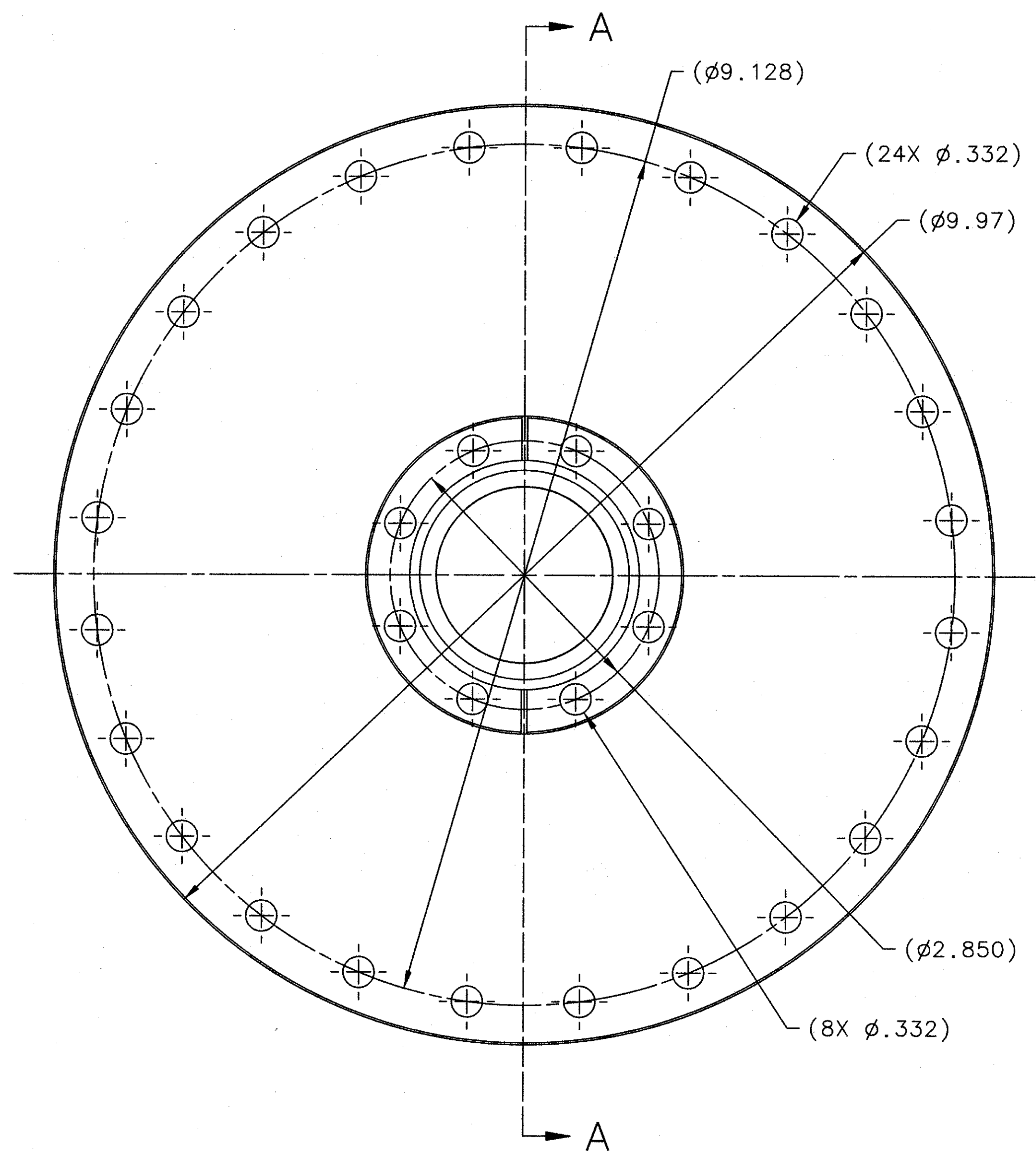
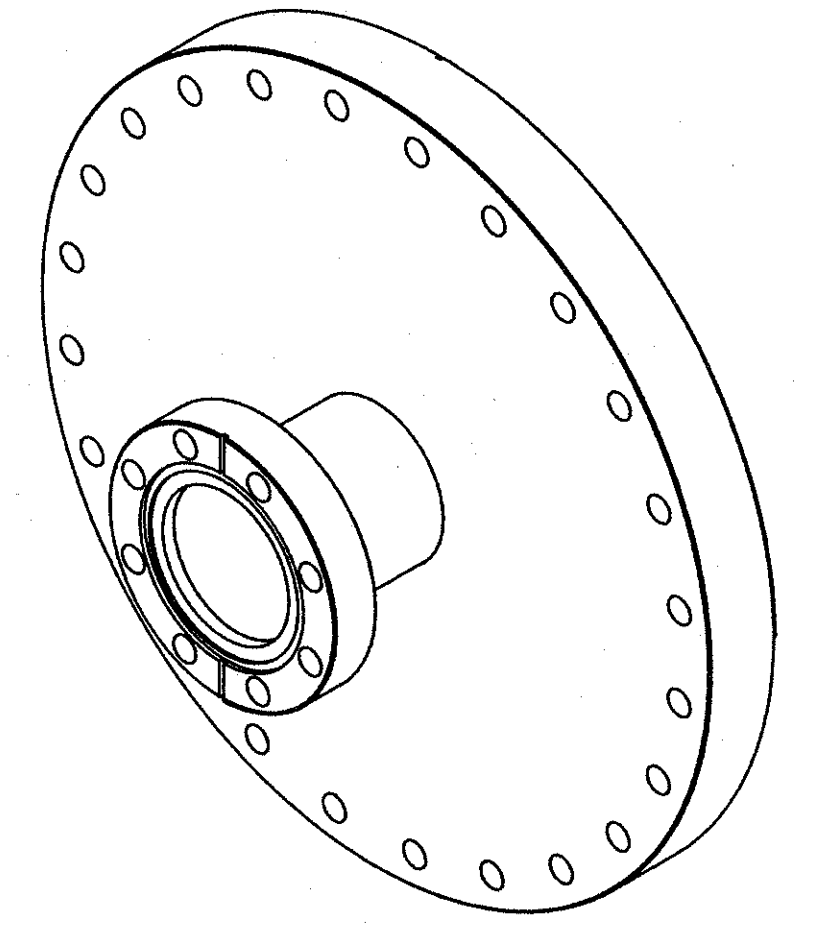


REVISION HISTORY			
ZONE	REV	DESCRIPTION	DATE



NOTES:

1. STENCIL "D00000-02-01-1008" AT APPROX. LOCATION SHOWN IN .25" MIN. CHARACTERS, BLACK PAINT.
2. THE FOLLOWING JLAB SPECIFICATIONS APPLY:
 FABRICATION OF UHV EQUIPMENT 22631-S-001 REV B
 CLEANING AND HANDLING OF UHV COMPONENTS 22632-S-001 REV E
 WELDING SPECIFICATION FOR UHV COMPONENTS 22633-S-001 REV A
 HELIUM LEAK TEST PROCEDURE FOR UHV COMP 22634-S-001 REV A
3. CERTIFICATION OF MATERIAL MUST BE ACCOMPANIED WITH DELIVERY.
4. SUGGESTED SOURCE OR JLAB APPROVED EQUIVALENT:
 A. MDC VACUUM PROD. (800)443-8817 www.mdcvacuum.com



SECTION A-A

QTY	ITEM NO.	PART OR IDENTIFYING NO.	NOMENCLATURE OR DESCRIPTION	MATERIAL SPECIFICATION	NOTES
1	3	MDC PART No.110017	DEL-SEAL CF FLANGE 3.38 OD, CL, NR, 2.01 BORE	STAINLESS STEEL TYPE 304	4A
1	2	D00000-02-01-2051	FLANGE CF 10.0 OD X 2.01 BORE		
1	1		TUBE STUB 2.0 OD X .065 W	STAINLESS STEEL TYPE 304	

FOR JLAB INTERNAL USE ONLY		DOCUMENT CONTROL STAMP	DIM & TOL PER ASME Y14.5 - UNLESS OTHERWISE SPECIFIED DIMENSIONS ARE IN INCHES		TRACKING NO.	United States Department of Energy	
ALL WELDS ON THIS DRAWING ARE AS DEFINED BY JLAB ES & H MANUAL CHAPTER 6122 App T6.		IOG	TOLERANCES ARE: FRACTIONS X ± 1 ANGLES ± .50° XX ± .01 XXX ± .005		N/A	Newport News Virginia	
WELD CLASS	WELD SPECIFICATION	MATERIAL	THIRD ANGLE PROJECTION	APPROVALS	DATE	Jefferson Lab Office of Jefferson National Accelerator Facility	
C	SEE NOTE 2	SEE PARTS LIST		DRWN VCR	05NOV08	HALL D GLUE-X BEAMLINE COLLIMATOR ALCOVE	
	WELD ANALYSIS	FINISH MACHINED SURFACES DEBURR & BREAK ALL SHARP EDGES		CHECKED	3NOV11	NIP. REDUCER CF10 - CF3.38 OD ASSY	
	N/A	DO NOT SCALE DRAWING		APPROVED	3NOV11	DWG. NO. D00000-02-01-1008	
				APPROVED	8NOV11	REV. -	
						SCALE 1:1 USED ON ASSY NO. D00000-00-01-0000 SHEET 1 OF 1	