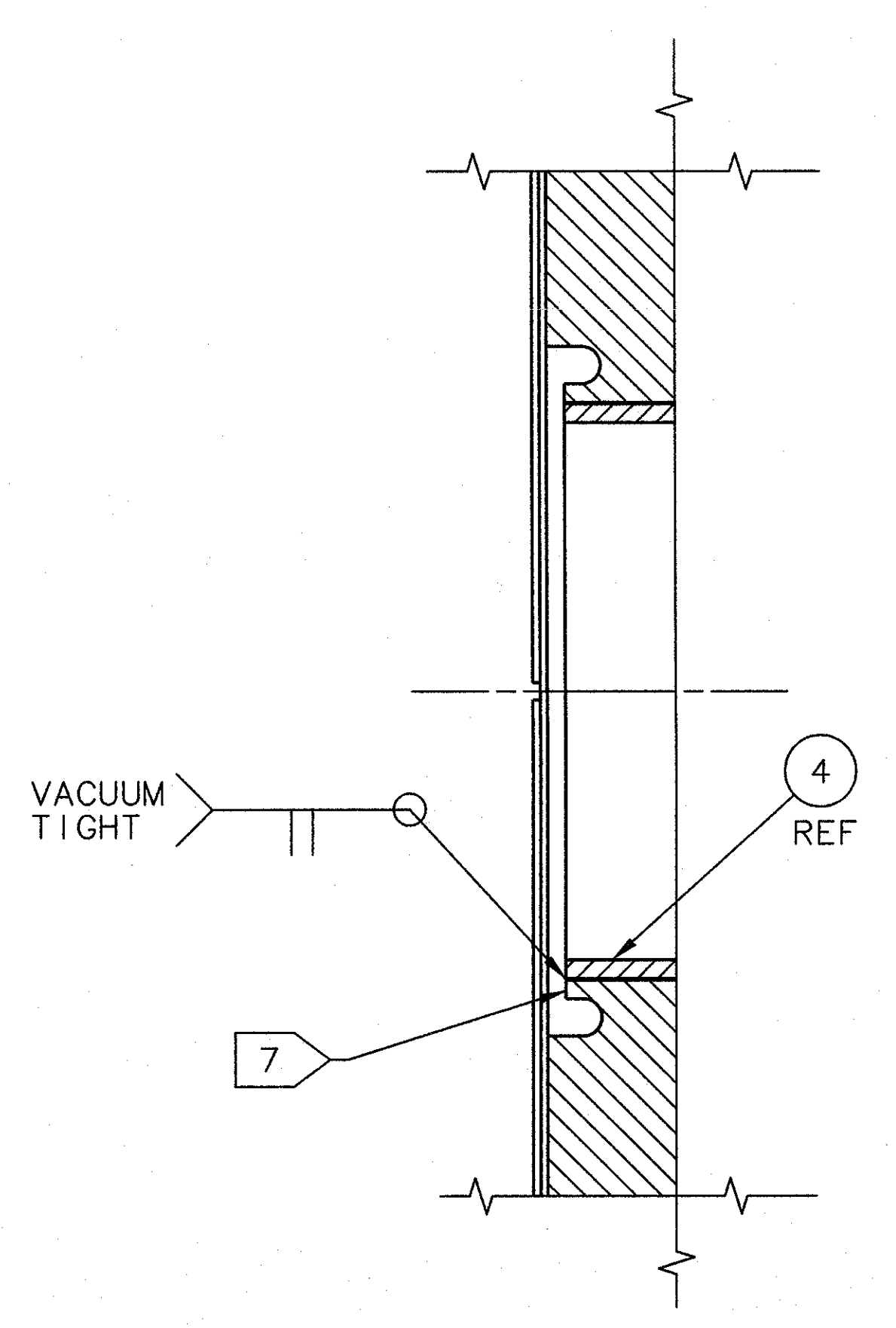
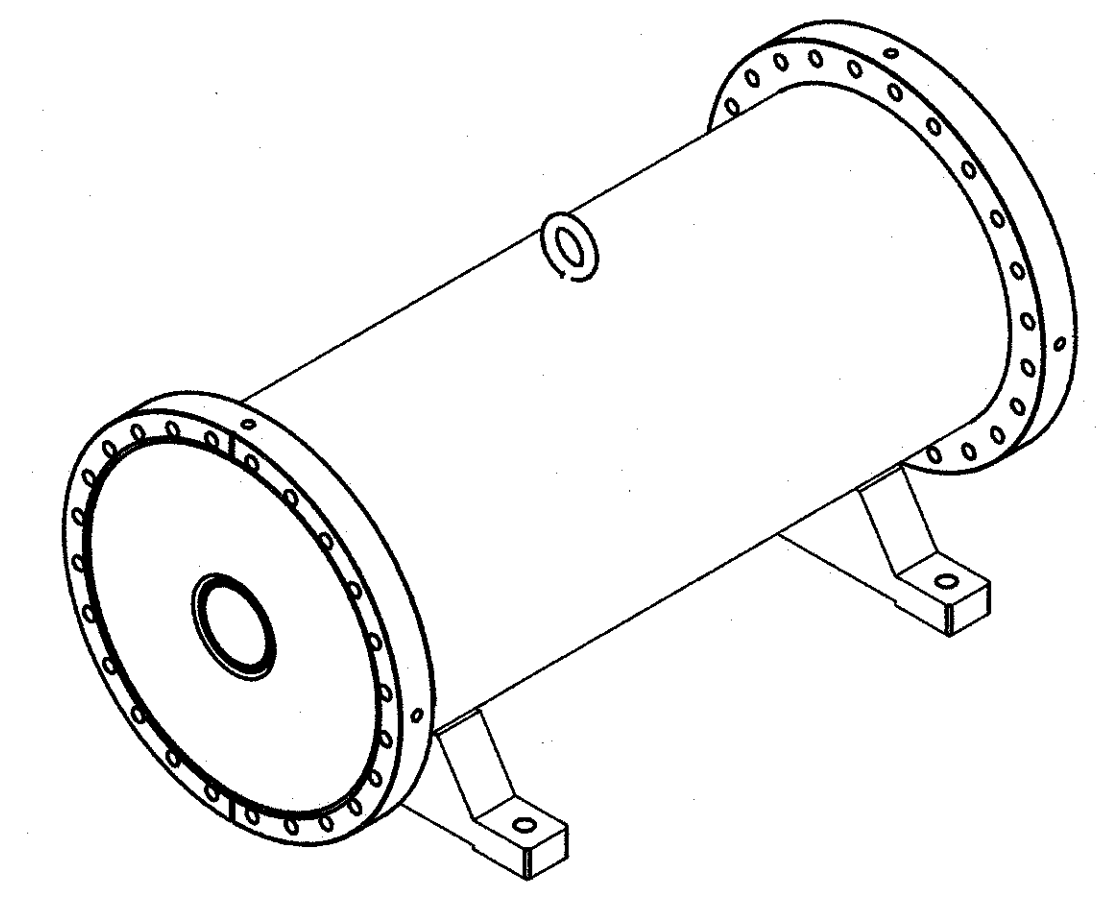
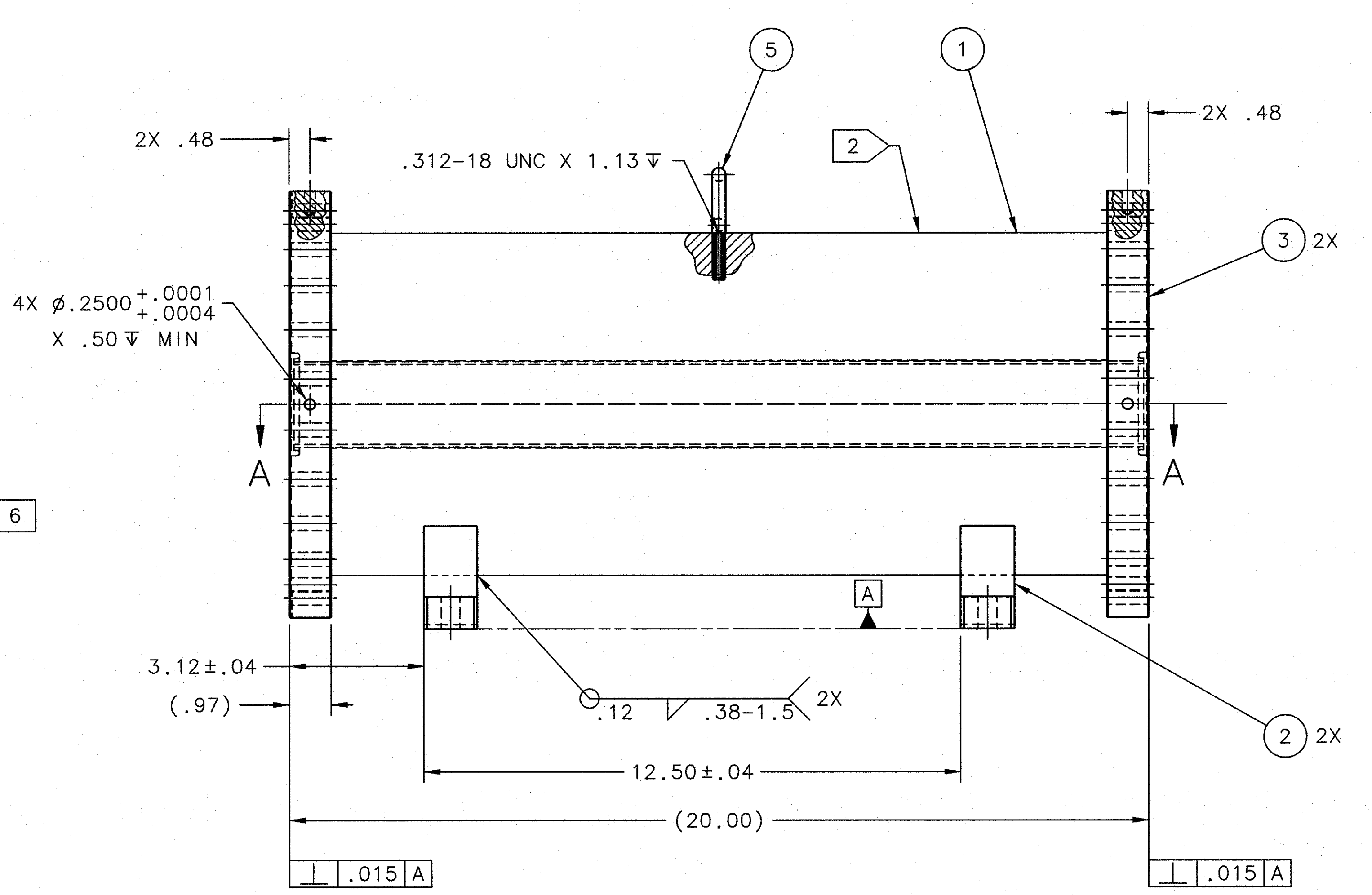
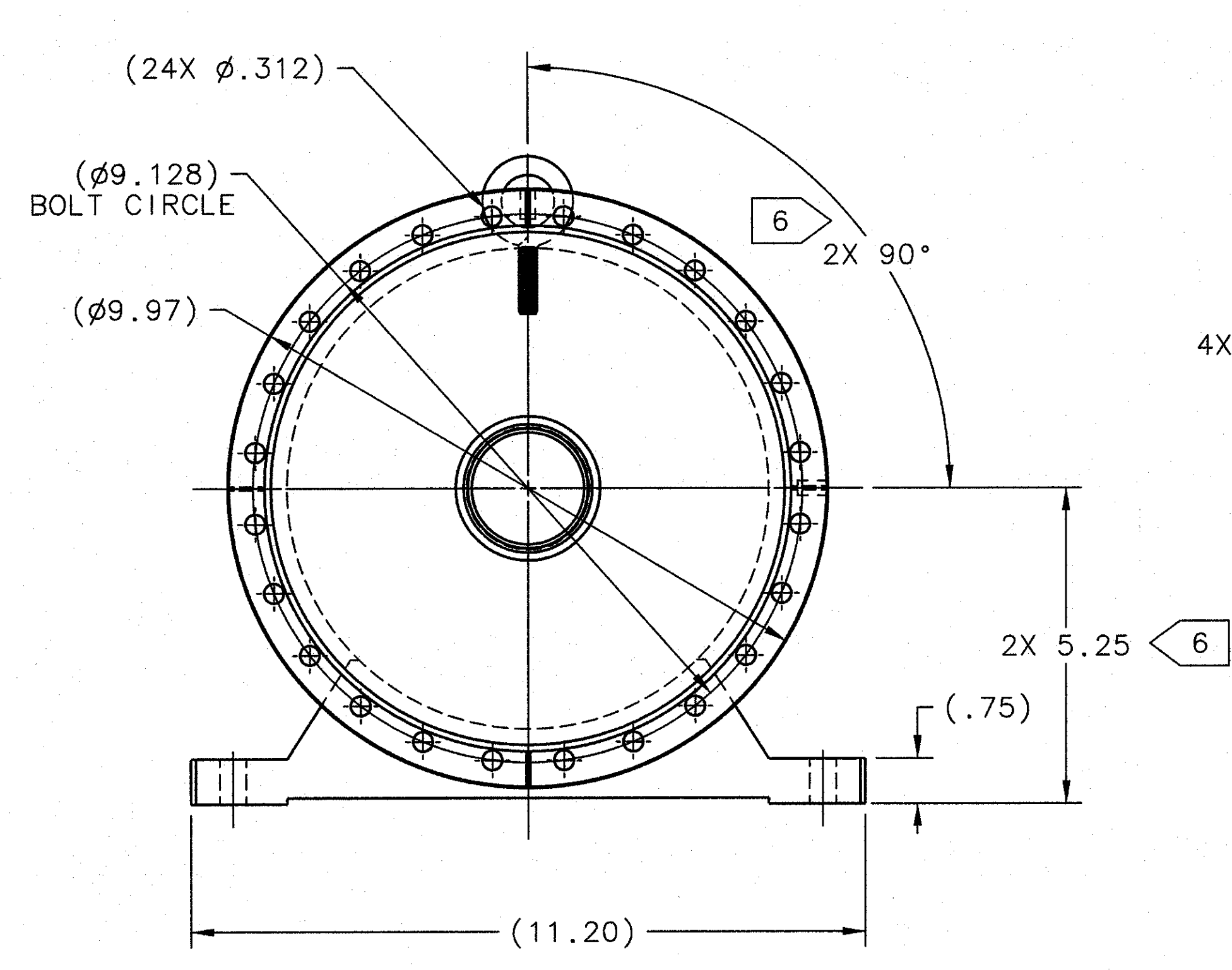
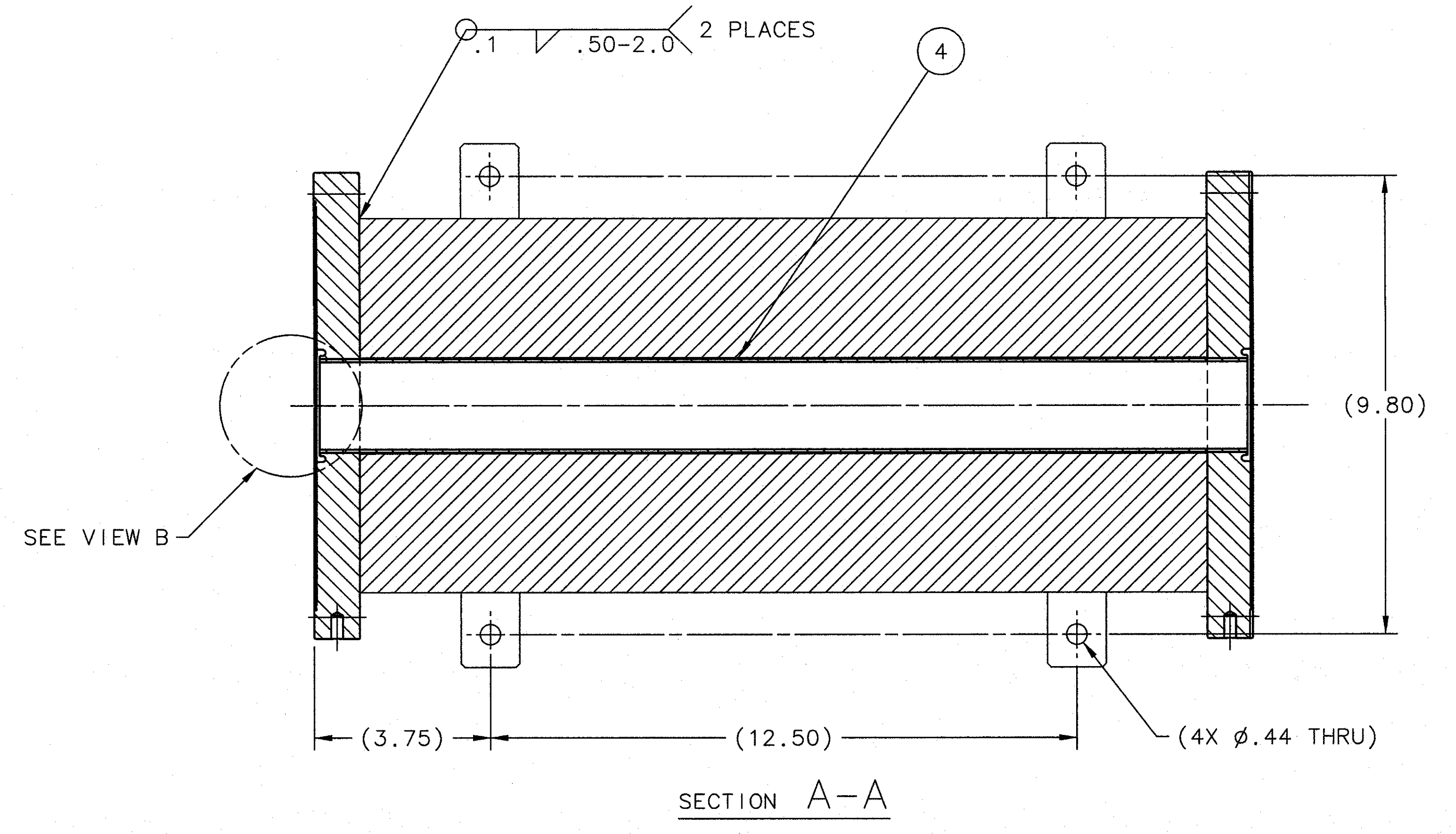


REVISION HISTORY				
ZONE	REV	DESCRIPTION	DATE	APPROVED



VIEW B
BOTH SIDES
SCALE 2:1



NOTES:

- DESCALE, SOLVENT WIPE & PRIME WITH ONE COAT OF RUSTOLEUM 1680830 GREY PRIMER. THEN PAINT WITH ONE COAT OF RUSTOLEUM 1644830 SAFETY YELLOW. PAINT PER MANUFACTURER'S INSTRUCTIONS & SPECIFICATIONS (JLAB APPROVED ALTERNATE IS ACCEPTABLE). APPLIES TO OUTER SURFACES OF ITEMS 2 & 3.
- STENCIL "D00000-02-01-1009" AT APPROXIMATE LOCATION SHOWN IN BLACK 1.0 INCH CHARACTERS. STENCIL "APPROX. WEIGHT 300 LBS" AT APPROXIMATE LOCATION SHOWN USING 1.0 HIGH CHARACTERS IN BLACK PAINT.
- THE FOLLOWING JLAB SPECIFICATIONS APPLY:
 FABRICATION OF UHV EQUIPMENT 22631-S-001 REV B
 CLEANING AND HANDLING OF UHV COMPONENTS 22632-S-001 REV E
 WELDING SPECIFICATION FOR UHV COMPONENTS 22633-S-001 REV A
 HELIUM LEAK TEST PROCEDURE FOR UHV COMP 22634-S-001 REV A
- CERTIFICATION OF MATERIAL MUST BE ACCOMPANIED WITH DELIVERY.
- DIMENSIONS APPLY AFTER WELDING.
- DIMENSIONS APPLY TO Ø.2500 HOLES ON ITEM 3.
- LENGTH OF ITEM 4 TO BE SUCH THAT THE ENDS ARE FLUSH TO SURFACE INDICATED ON FLANGE.
- SUGGESTED SOURCES OR JLAB APPROVED EQUIVALENT:
 A. MDC VACUUM PROD. (800)443-8817 www.mdcvacuum.com
 B. McMASTER-CARR 562-692-5911 www.mcmaster.com

QTY	ITEM NO.	PART OR IDENTIFYING NO.	NOMENCLATURE OR DESCRIPTION	MATERIAL SPECIFICATION	NOTES
1	5	McMASTER-CARR 3013342	EYEBOLT-.31-18 UNC X .88 DIA	STEEL/ZINC-PLATED	8
1	4		SEAMLESS TUBE 2.0 OD X .065 WALL	304 STAINLESS STL	7
2	3	D00000-02-01-2052	FLANGE OF 10.0 CL BLANK-MODIFIED		
2	2	D00000-02-01-2054	SUPPORT BLOCK		
1	1	D00000-02-01-2053	SHIELDING BLOCK-COLLIMATOR 2		

FOR JLAB INTERNAL USE ONLY

ALL WELDS ON THIS DRAWING ARE AS DEFINED BY JLAB ES & H MANUAL CHAPTER 6122 APP 16.

WELD CLASS: C

WELD SPECIFICATION: SEE NOTE 3

WELD ANALYSIS: N/A

DOCUMENT CONTROL STAMP: ICG

MATERIAL: SEE PART LIST

FINISH: MACHINED SURFACES DEBURR & BREAK ALL SHARP EDGES

UNLESS OTHERWISE NOTED DO NOT SCALE DRAWING

TRACKING NO. N/A

APPROVALS: R. GETZ 11/19/11

CHECKED: [Signature] 3/26/11

APPROVED: [Signature] 3/26/11

APPROVED: [Signature] 02/20/11

United States Department of Energy

Jefferson Lab
Thomas Jefferson National Accelerator Facility

HALL D GLUE-X BEAMLINE COLLIMATOR ALCOVE VACUUM ENCLOSURE ASSY-COLLIMATOR 2

SIZE: DWG. NO. D00000-02-01-1009

SCALE: 1:2

REV. 7

SHEET 1 OF 1