

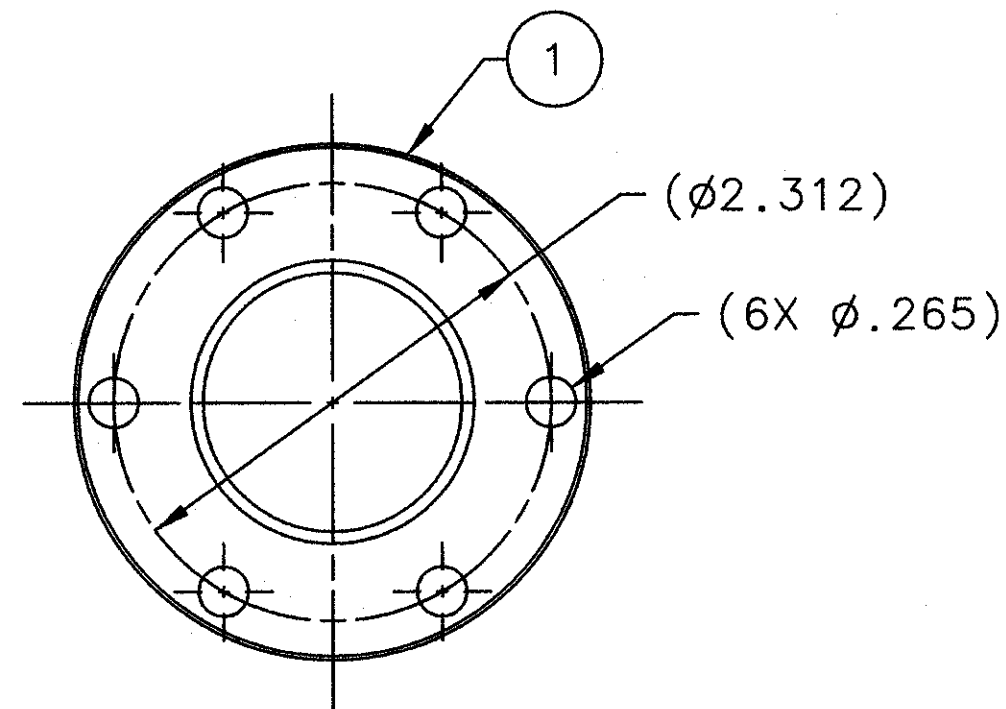
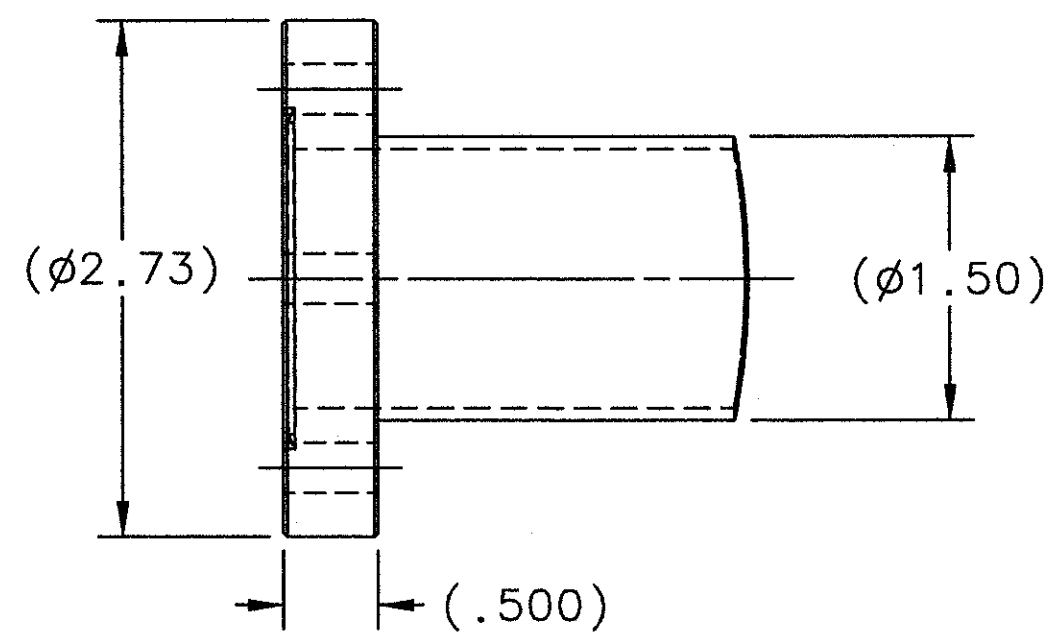
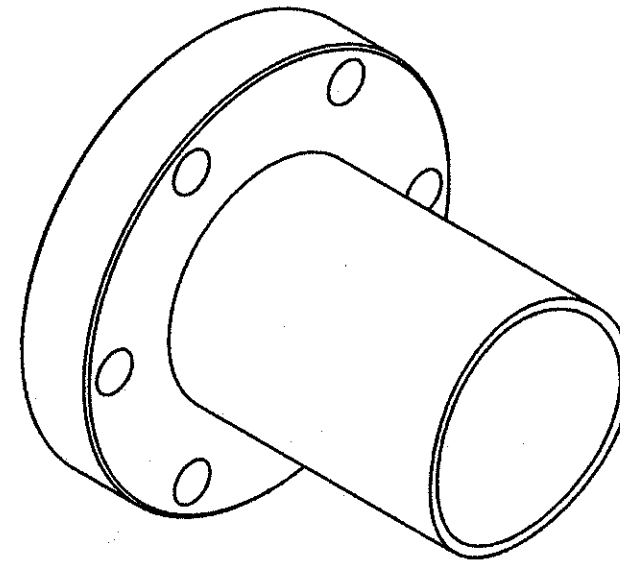
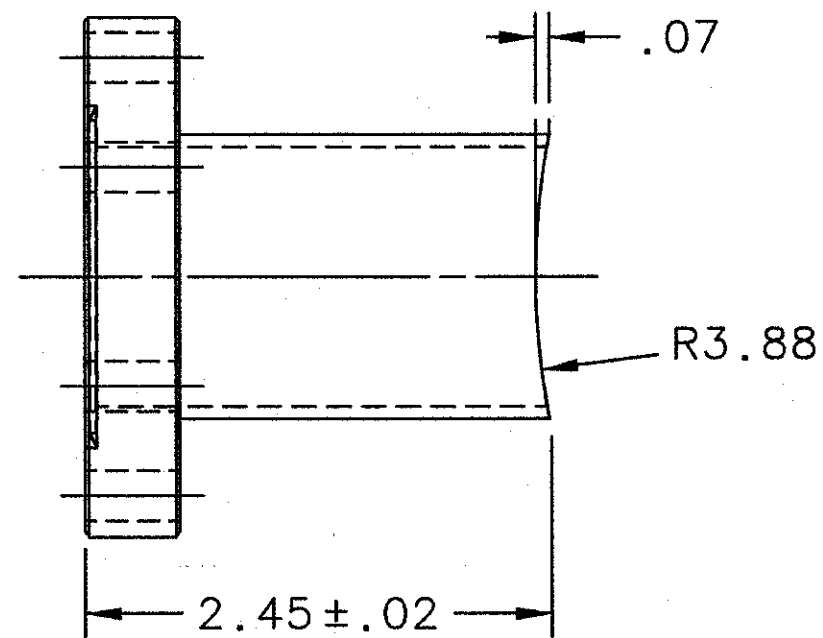
REVISION HISTORY				
ZONE	REV	DESCRIPTION	DATE	APPROVED

4

3

2

1



## NOTES:

- THE FOLLOWING JLAB SPECIFICATIONS APPLY:  
 FABRICATION OF UHV EQUIPMENT . . . . . 22631-S-001 REV B  
 CLEANING AND HANDLING OF UHV COMPONENTS . . . . . 22632-S-001 REV E
- SUGGESTED SOURCE OR JLAB APPROVED EQUIVALENT:  
 A. MDC VACUUM PROD. (800)443-8817 www.mdcvacuum.com

1	1	MDC PART NO. 401002	DEL-SEAL CF HALF NIPPLE 2.75 OD, NR	STAINLESS STEEL TYPE 304	2A
QTY REQD	ITEM NO.	PART OR IDENTIFYING NO.	NOMENCLATURE OR DESCRIPTION	MATERIAL SPECIFICATION	NOTES

DOCUMENT CONTROL STAMP  
  
 MATERIAL  
 SEE PARTS LIST  
 FINISH MACHINED SURFACES 125 UNLESS OTHERWISE NOTED  
 DEBURR & BREAK ALL SHARP EDGES  
 DO NOT SCALE DRAWING

DIM & TOL PER ASME Y14.5  
 UNLESS OTHERWISE SPECIFIED  
 DIMENSIONS ARE IN INCHES  
 TOLERANCES ARE:  
 FRACTIONS DECIMAL ANGLES  
 ± N/A .X ± .1 ± .50°  
 .XX ± .01  
 .XXX ± .005

THIRD ANGLE PROJECTION

TRACKING NO.  
N/A

APPROVALS DATE  
 DRAWN R. GETZ 17FEB11  
 CHECKED *[Signature]* 3 Nov 11  
 APPROVED *[Signature]* 3 Nov 11  
 APPROVED *[Signature]* 08 Nov 11

United States Department of Energy  
**Jefferson Lab**  
 Thomas Jefferson National Accelerator Facility  
 Newport News Virginia

HALL D - GLUEX  
 BEAMLINE  
 COLLIMATOR ALCOVE  
 HALF NIPPLE CF 2.75 OD, NR, MODIF.

SIZE DWG. NO. REV.  
 C D00000-02-01-2004 -

SCALE 1:1 USED ON ASSY NO. D00000-02-01-1000 SHEET 1 OF 1

4

3

2

1