

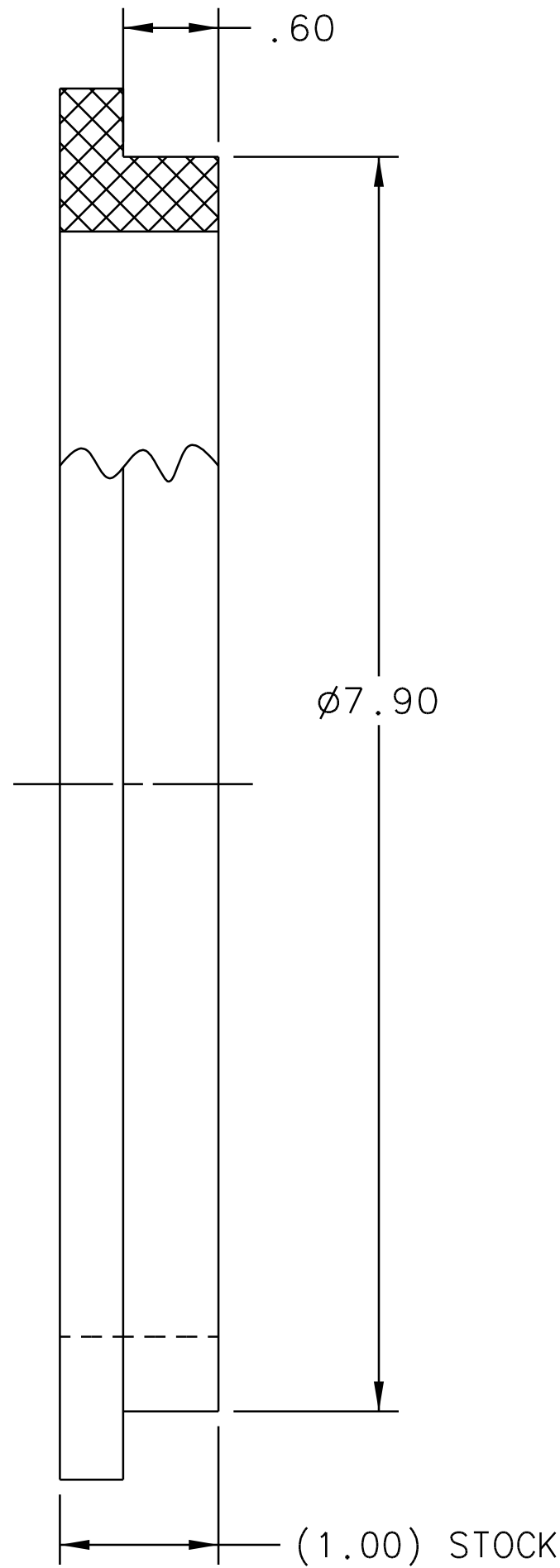
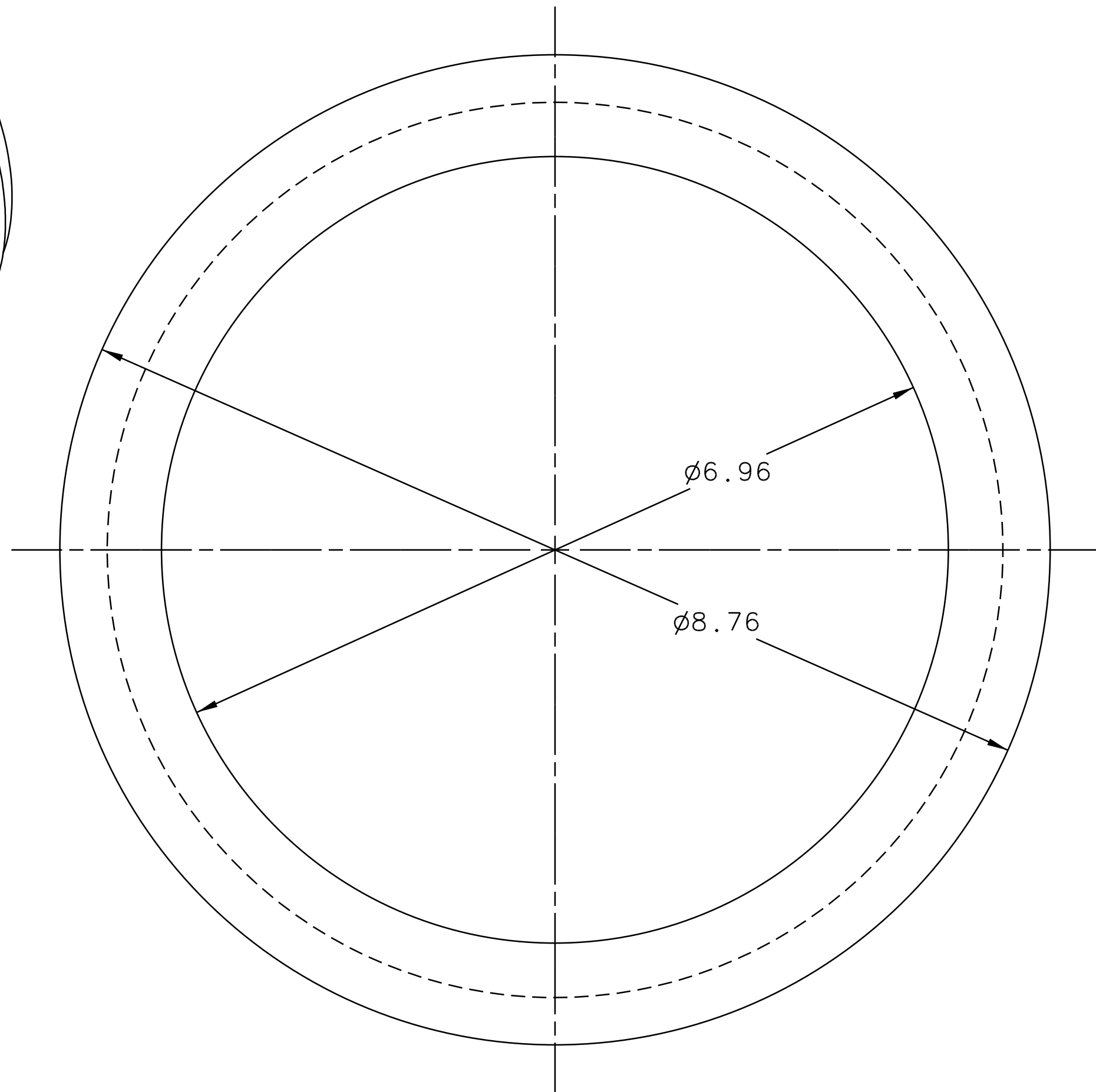
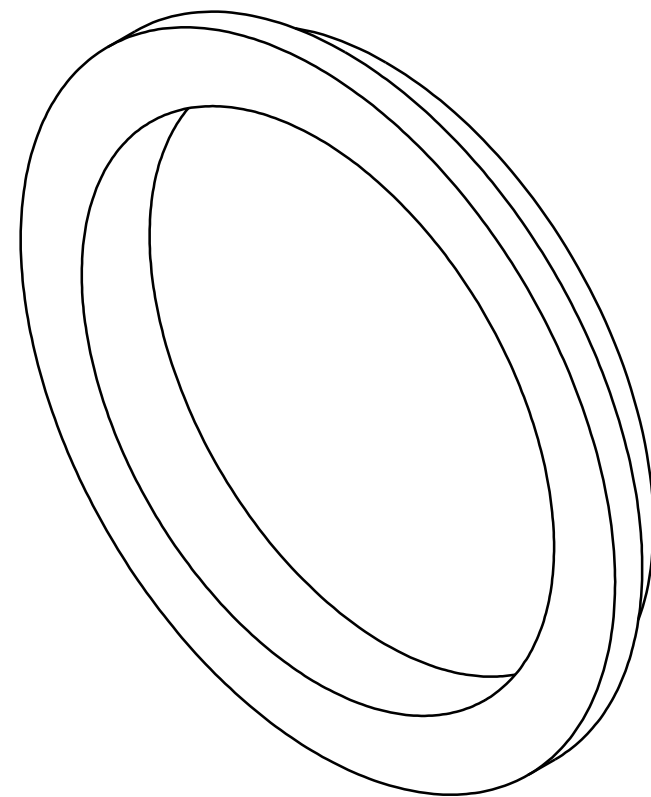
4

3

2

1

REVISION HISTORY				
ZONE	REV	DESCRIPTION	DATE	APPROVED
A-2,3	A	MATERIAL WAS CHANGED. NOTES WERE ADDED. VGR 08DEC11		



A
NOTES:

- SUGGESTED SOURCE OR JLAB APPROVED ALTERNATE:
A. EVONIC INDUSTRIES
PHONE: 801-495-9403
www.rohacell.com

DOCUMENT CONTROL STAMP	DIM & TOL PER ASME Y14.5 - UNLESS OTHERWISE SPECIFIED DIMENSIONS ARE IN INCHES TOLERANCES ARE: FRACTIONS DECIMAL ANGLES \pm N/A .X $\pm .1$ $\pm .50^\circ$.XX $\pm .02$.XXX $\pm .005$	TRACKING NO. N/A	United States Department of Energy	Jefferson Lab Thomas Jefferson National Accelerator Facility	Newport News Virginia
MATERIAL ROHACELL 71 IG-F 1.00 SHEET THICKNESS	THIRD ANGLE PROJECTION	APPROVALS	DATE	HALL D-GLUEX DETECTOR CENTRAL DRIFT CHAMBER INNER FOAM RING	
FINISH MACHINED SURFACES UNLESS OTHERWISE NOTED DEBURR & BREAK ALL SHARP EDGES		DRAWN VGR	23SEP10	SIZE C	DWG. NO. D00000-01-02-2025
DO NOT SCALE DRAWING		CHECKED R.GETZ	8NOV11	SCALE 1:1	USED ON ASSY NO. D00000-01-02-1000
		APPROVED VGR	8NOV11	SHEET 1 OF 1	
		APPROVED T.WHITLATCH	8NOV11	REV. A	

4

3

2

1