

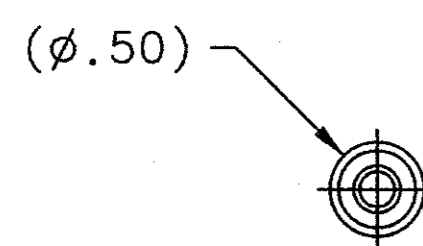
4

3

2

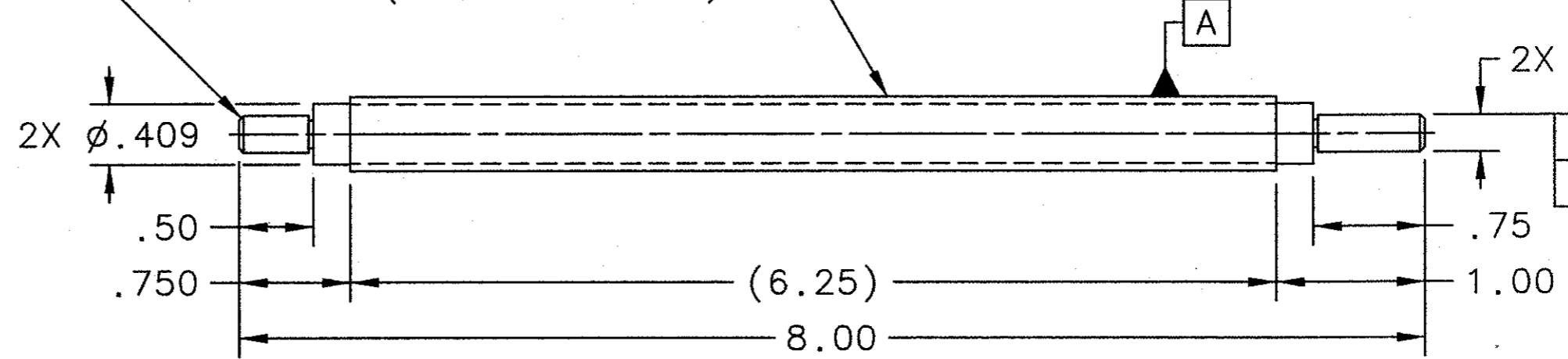
1

REVISION HISTORY				
ZONE	REV	DESCRIPTION	DATE	APPROVED



2X .03 X 45°
CHAMFER

.500-10ACME-2C-RH
(GROUND THREAD)



∇	ϕ .001	A
\odot	ϕ .002	A

DOCUMENT CONTROL STAMP IOG	DIM & TOL PER ASME Y14.5 . UNLESS OTHERWISE SPECIFIED DIMENSIONS ARE IN INCHES TOLERANCES ARE: FRACTIONS DECIMAL ANGLES \pm N/A .X \pm .1 \pm .50° .XX \pm .01 .XXX \pm .005	TRACKING NO. N/A		United States Department of Energy	Jefferson Lab <small>Thomas Jefferson National Accelerator Facility</small>	Newport News Virginia
		APPROVALS	DATE			
MATERIAL 304 STAINLESS STEEL	THIRD ANGLE PROJECTION	DRAWN B. REINHART	28FEB11	DIA DEVICES INSERTION DEVICES HARP/SUPER HARP ACME DRIVE SCREW - DETAIL		
FINISH MACHINED SURFACES DEBURR & BREAK ALL SHARP EDGES		CHECKED <i>[Signature]</i>	7 APR 11			
UNLESS OTHERWISE NOTED		ELECTICS APPROVED <i>[Signature]</i>	7 APR 11	SIZE DWG. NO.	REV.	
DO NOT SCALE DRAWING		APPROVED <i>[Signature]</i>	7 APR 11	C DIA-007-0200-3012	-	
				SCALE 1:1	USED ON ASSY NO. DIA-007-0200-3000/3001	SHEET 1 OF 1

4

3

2

1