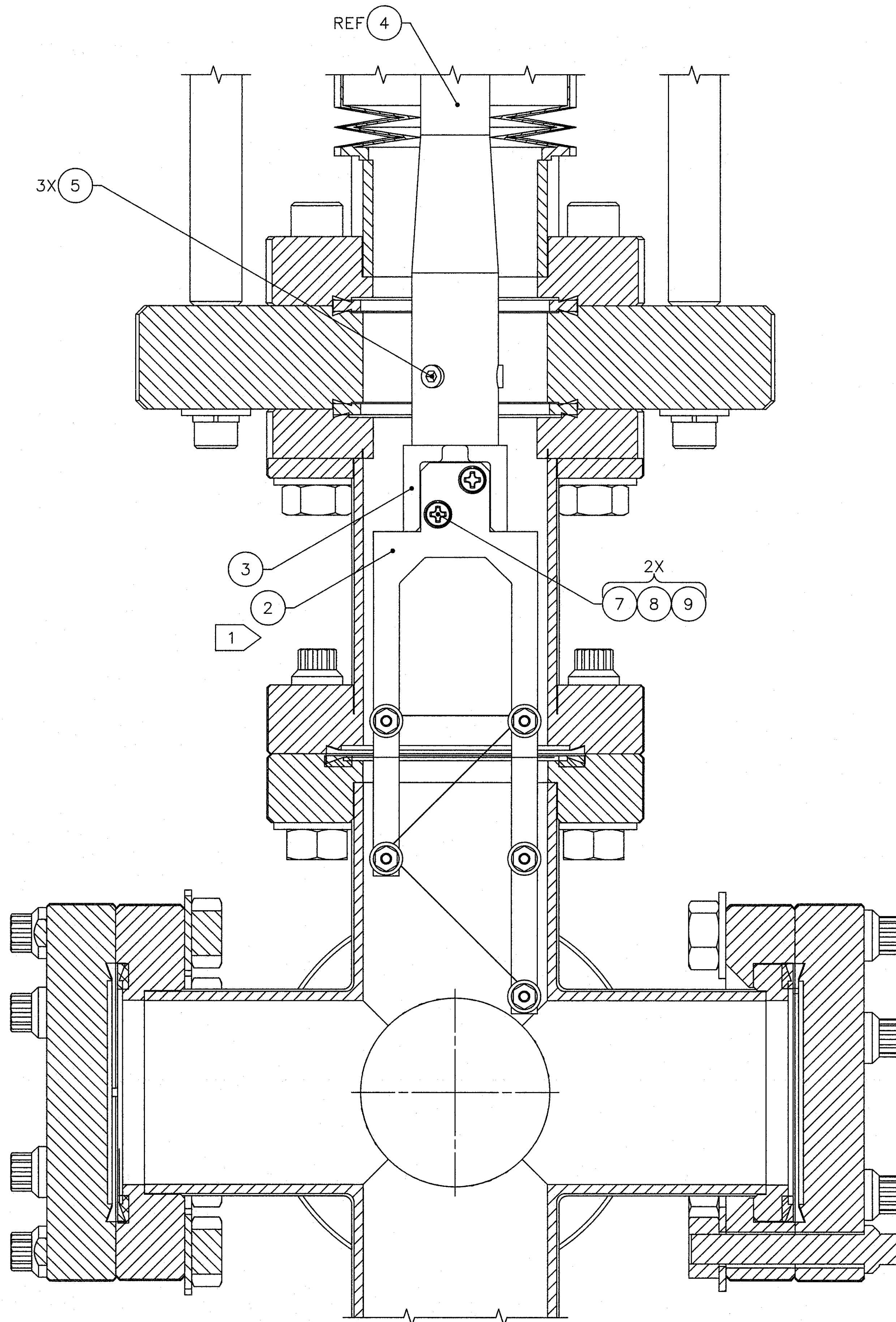
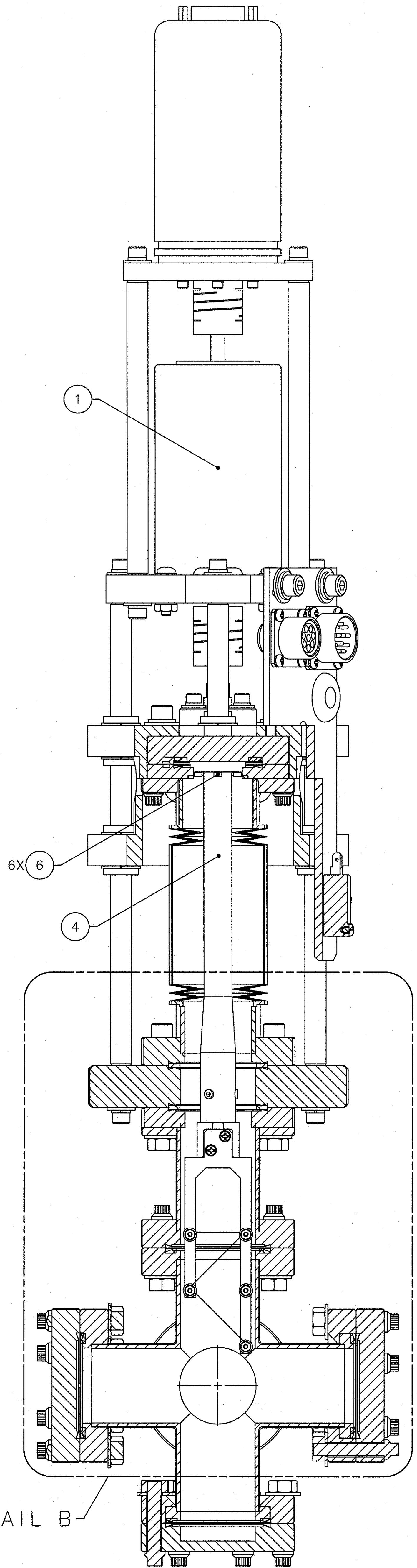
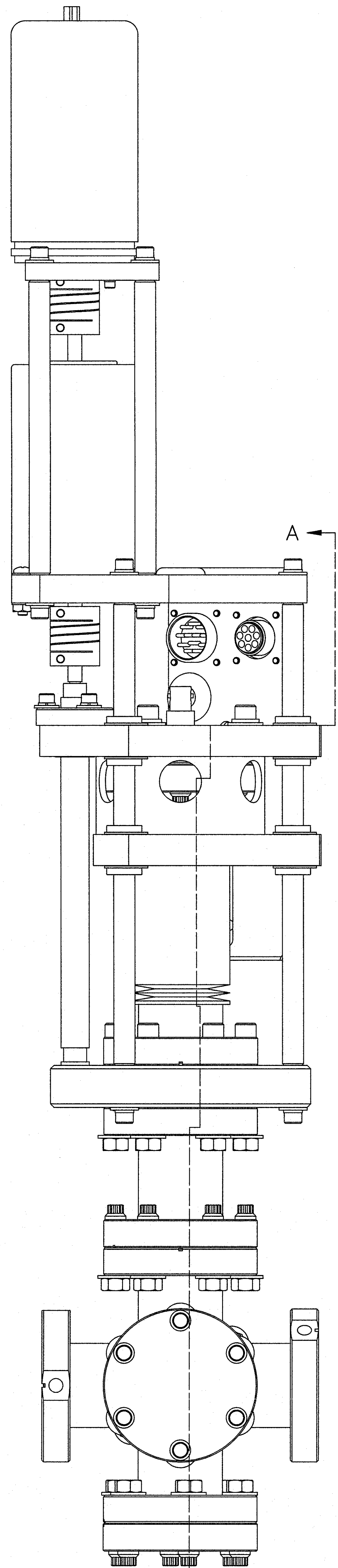
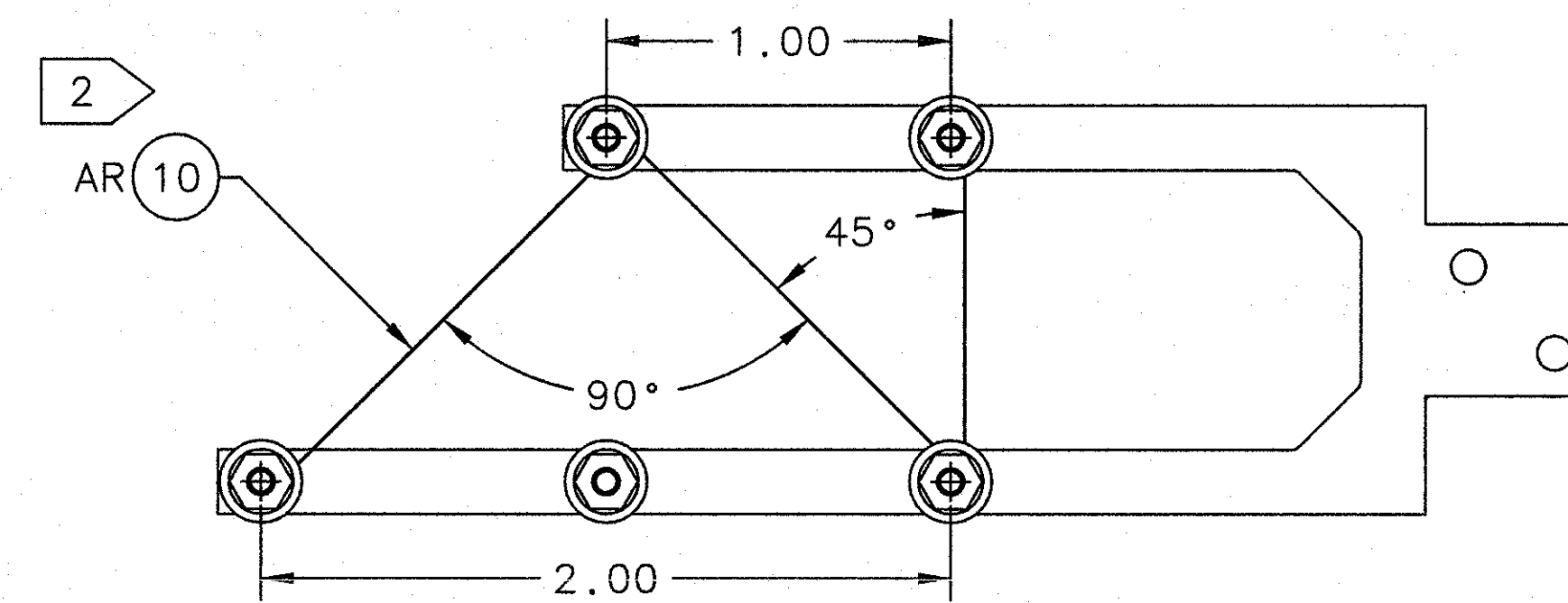


REVISION HISTORY				
ZONE	REV	DESCRIPTION	DATE	APPROVED
A4	C2	DELETED NOTE 1 & CORRESPONDING TABLE.	8/3/11	[Signature]
			08/03/11	ALU



DETAIL B  
SCALE: 2:1



ITEM 2  
WIRING SCHEMATIC FOR SUPER HARP FLAG  
IN THE HORIZONTAL POSITION

- NOTES:
- (NOTE DELETED)
  - USE THE FORK WIRING FIXTURE ASSEMBLY (DIA0070200-3030) & THE PROCESS OUTLINED IN SPECIFICATION (SPT00000000027) TO WIRE THE FORK, ITEM 2.

QTY	ITEM NO.	PART OR IDENTIFYING NO.	MANUFACTURE OR DESCRIPTION	PARTS LIST	MATERIAL SPECIFICATION	NOTES
AR	10	HARDWARE	20 MICRON WIRE		75% TUNGSTEN, 25% RHENIUM	
2	9	HARDWARE	WASHER, SPRING LOCK, #2		300 SERIES STAINLESS STEEL	
2	8	HARDWARE	WASHER, FLAT, #2		300 SERIES STAINLESS STEEL	
2	7	HARDWARE	PAN HEAD MACHINE SCREW, PHILLIPS DRIVE, #2-56 UNC-2A X .38 LG		300 SERIES STAINLESS STEEL	
6	6	HARDWARE	SOCKET HEAD CAP SCREW, #2-56 UNC-3A X .38 LG		300 SERIES STAINLESS STEEL	
3	5	HARDWARE	SET SCREW, CUP POINT, HEX DRIVE #8-32 UNC-3A X .19 LG		300 SERIES STAINLESS STEEL	
1	4	DIA0070200-3024	HARP/SUPER HARP FLAG BOLTED SHAFT			
1	3	DIA0070200-3023	HARP/SUPER HARP FLAG ADAPTER			
1	2	SEE CHART	HARP/SUPER HARP FORK ASSEMBLY			1
1	1	DIA0070200-3001	SUPER HARP BODY ASSEMBLY			

EACH SHEET OF MULTI-SHEET DRAWINGS SHALL ALWAYS HAVE THE SAME REVISION LEVEL.

UNITED STATES DEPARTMENT OF ENERGY  
**Jefferson Lab**  
 Thomas Jefferson National Accelerator Facility  
 Newport News, Virginia

DIA DEVICES  
 INSERTION DEVICES  
 SUPER HARP HORIZONTAL ASSEMBLY

SIZE DWG. NO. E DIA-0070200-3025  
 SCALE 1:1 (SEE 0070200-3025) N/A SHEET 1 OF 1

DOCUMENT CONTROL STAMP

MATERIAL SEE PARTS LIST

FINISH 125 UNLESS OTHERWISE NOTED  
 SURFACES DEBURR & BREAK ALL SHARP EDGES

DO NOT SCALE DRAWING

TRACKING NO. N/A

APPROVALS DATE

DRAWN B. REINHART 16JUN11

CHECKED S. WORTHINGTON 16JUN11

APPROVED W. HANCO 16JUN11

APPROVED L.A. DILLON-TOWNES 16JUN11

