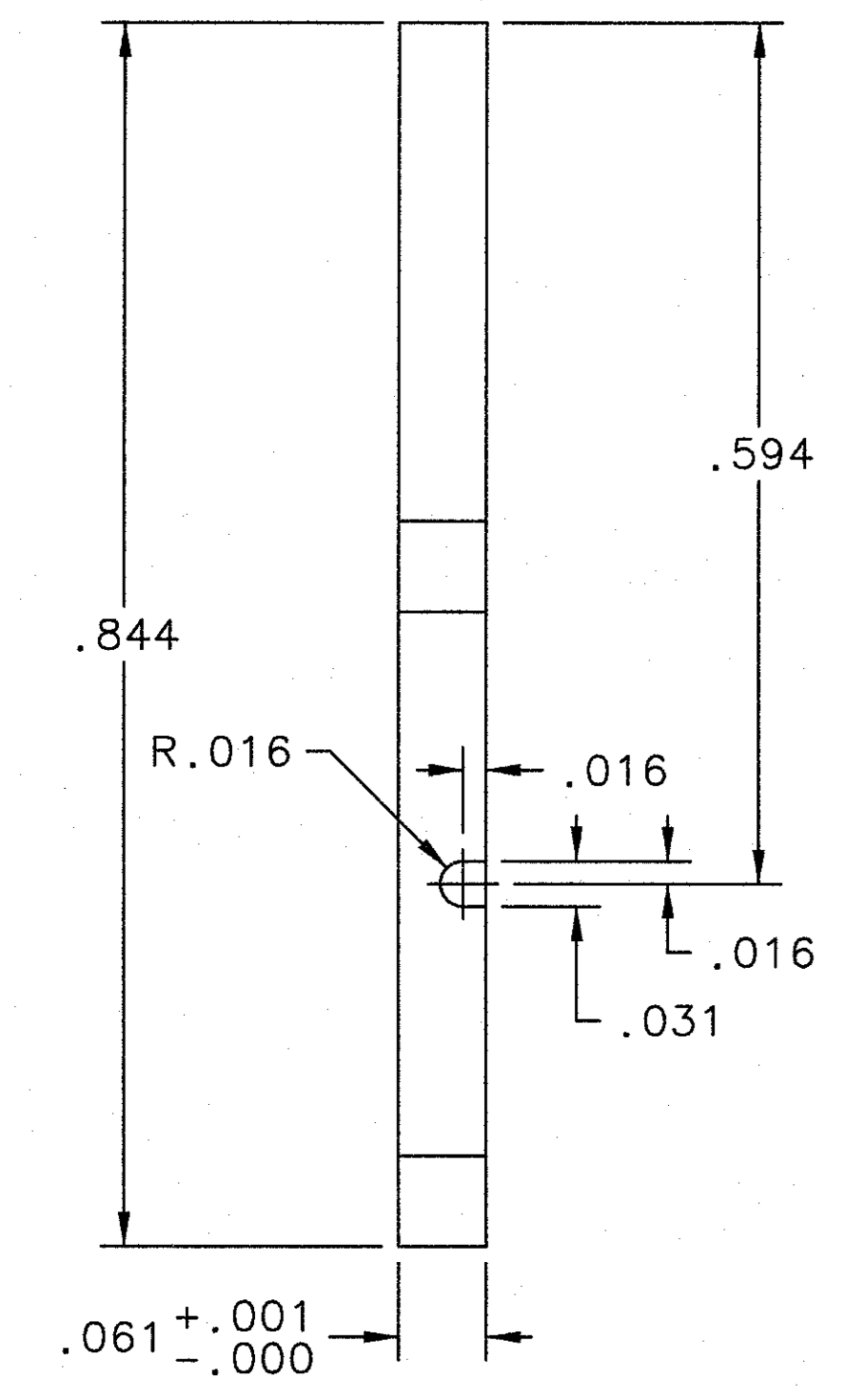
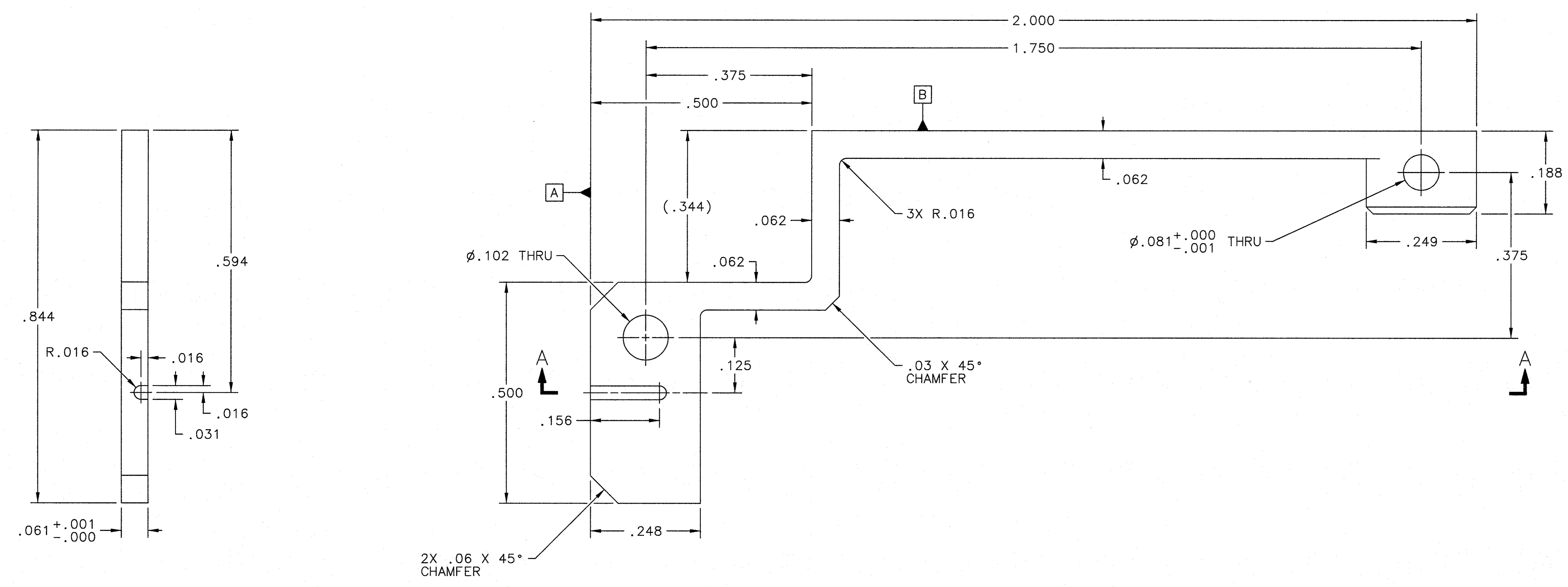
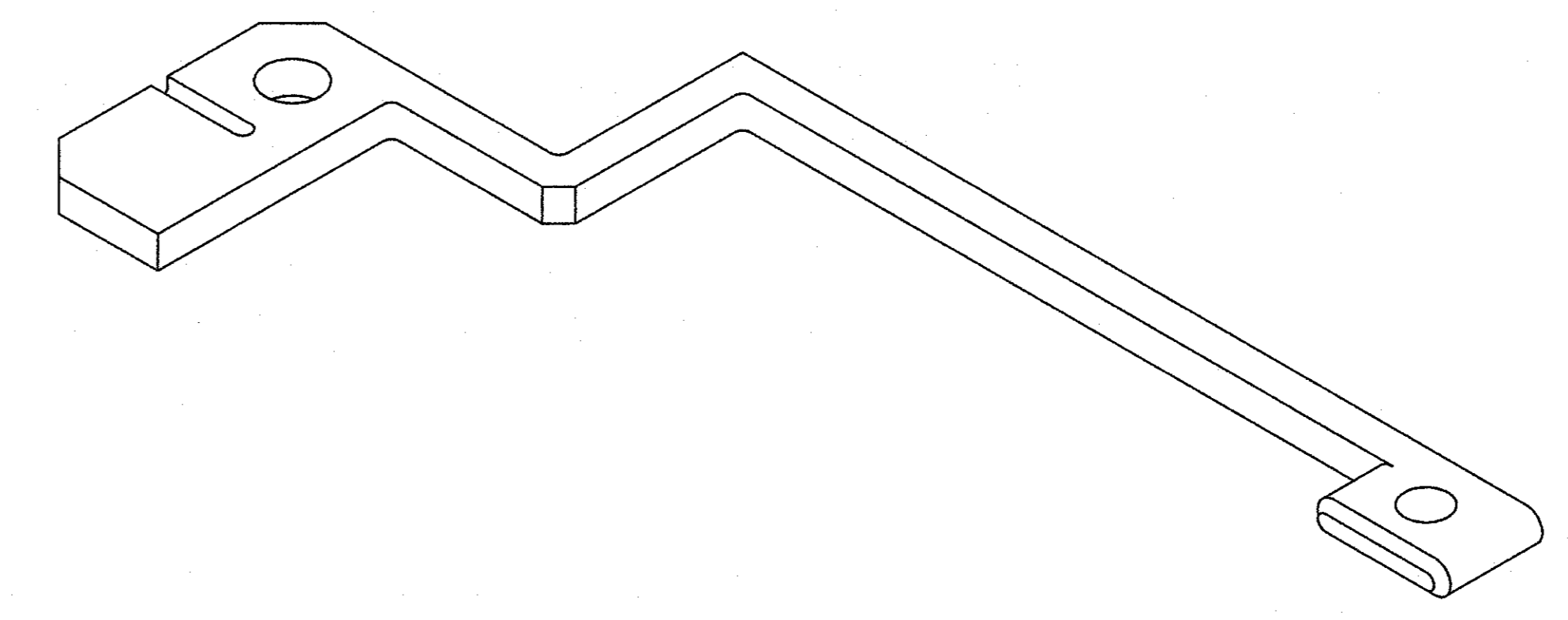
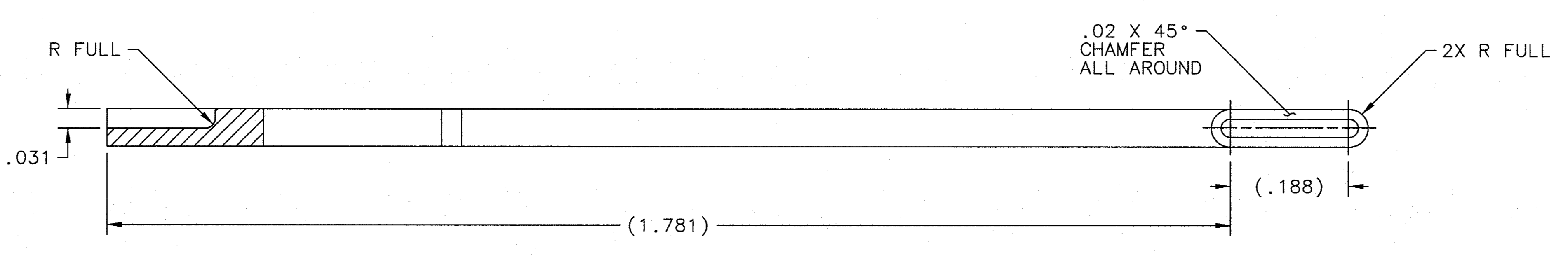


REVISION HISTORY				
ZONE	REV	DESCRIPTION	DATE	APPROVED
A3	A	REVISED MATERIAL CALLOUT & DELETED NOTES.	08/03/11	<i>[Signature]</i>
			BJR 08/03/11	MLL



2X .06 X 45° CHAMFER



SECTION A-A

DOCUMENT CONTROL STAMP 		EACH SHEET OF MULTI-SHEET DRAWINGS SHALL ALWAYS HAVE THE SAME REVISION LEVEL. DIM & TOL PER ASME Y14.5 UNLESS OTHERWISE SPECIFIED DIMENSIONS ARE IN INCHES TOLERANCES ARE: FRACTIONS DECIMAL ANGLES \pm N/A \pm .005 \pm .50° \pm .001 \pm .001 \pm .001		TRACKING NO. N/A APPROVALS DATE DRAWN B. REINHART 03JUN11 CHECKED S. WORTHINGTON 14JUN11 APPROVED W. IVANCO 14JUN11 APPROVED L.A. DILLON-TOMES 14JUN11		United States Department of Energy Jefferson Lab Thomas Jefferson National Accelerator Facility Newport News Virginia	
MATERIAL OFHC COPPER FINISH MACHINED UNLESS OTHERWISE NOTED SURFACES DEBURR & BREAK ALL SHARP EDGES DO NOT SCALE DRAWING		THIRD ANGLE PROJECTION 		DIA DEVICES INSERTION DEVICES HARP/SUPER HARP HALF SLOTTED LEG CONDUCTIVE INSERT - DETAIL SIZE/DWG. NO. DIA-007-0200-3029 SCALE 8:1 (800 IN ASST W. 01A-007-0200-3029)		REV. A SHEET 1 OF 1	