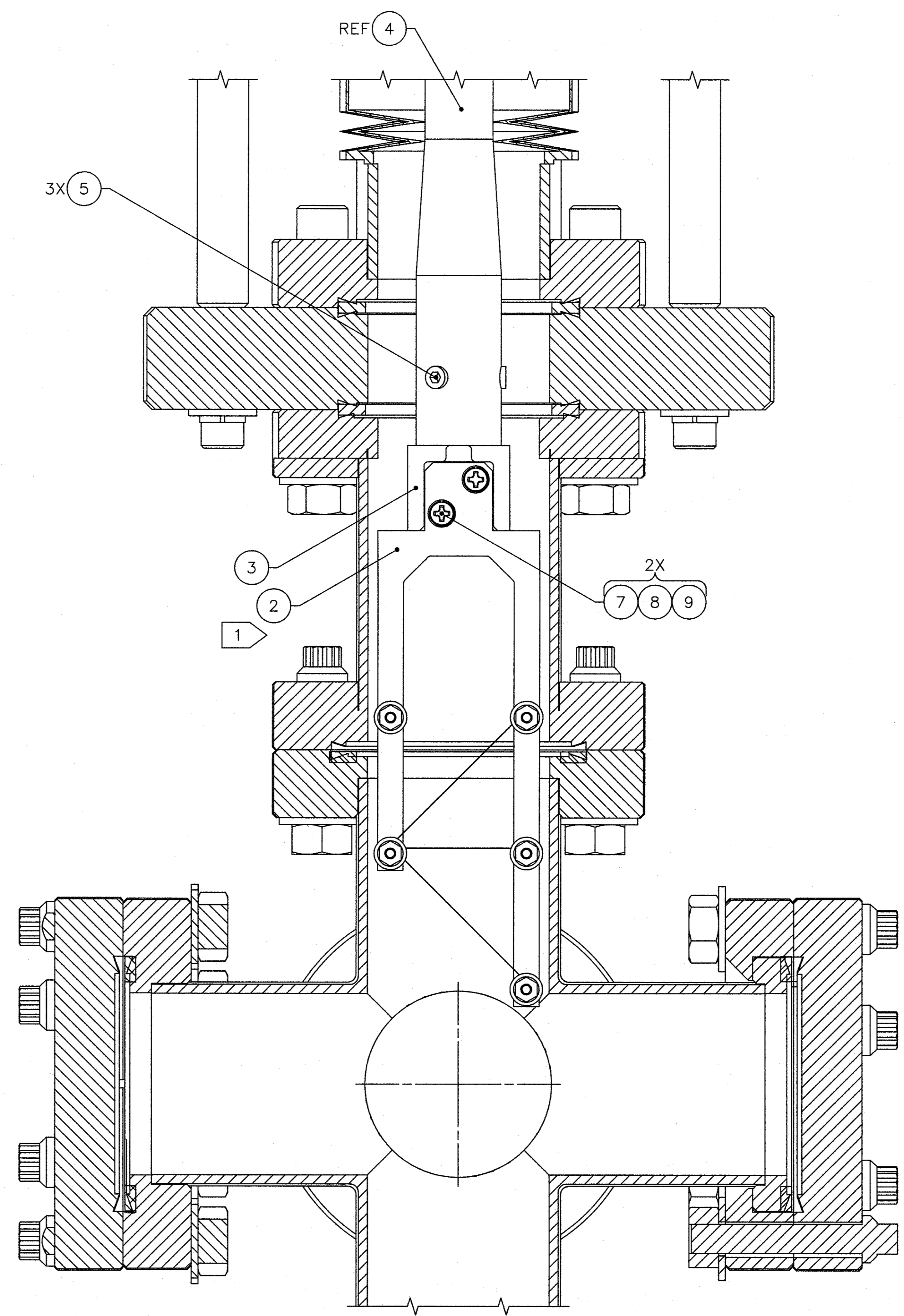
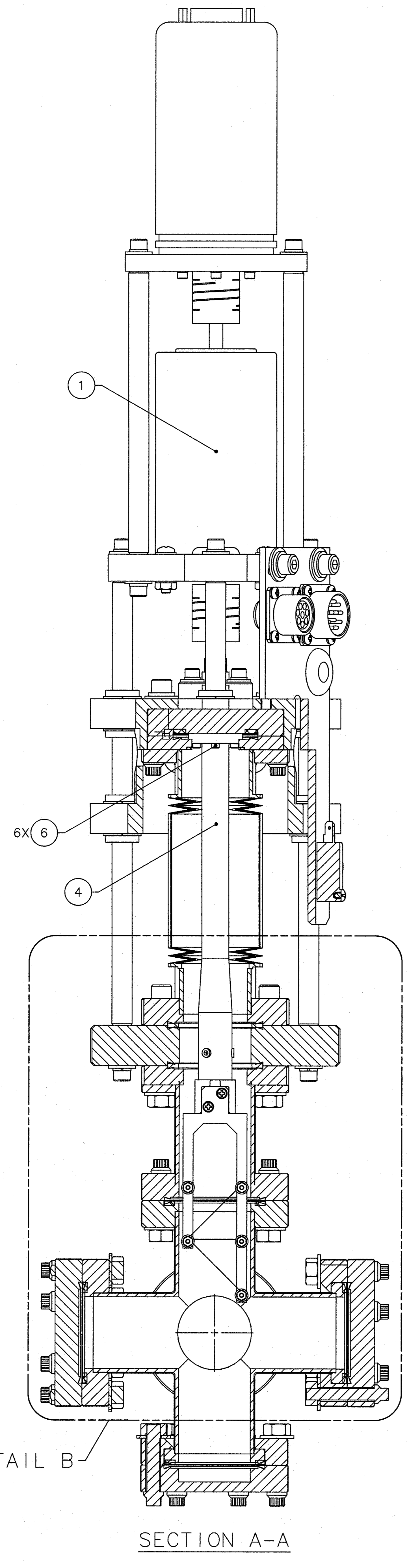
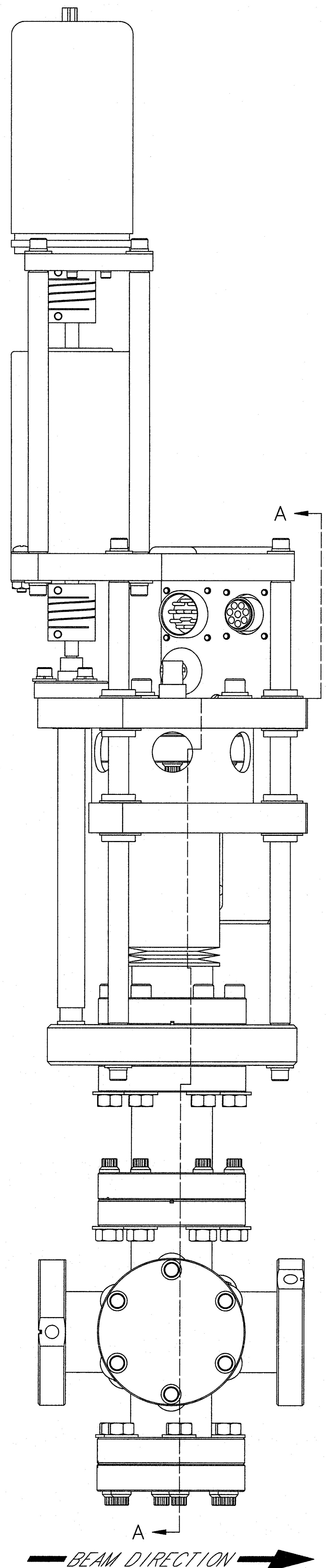
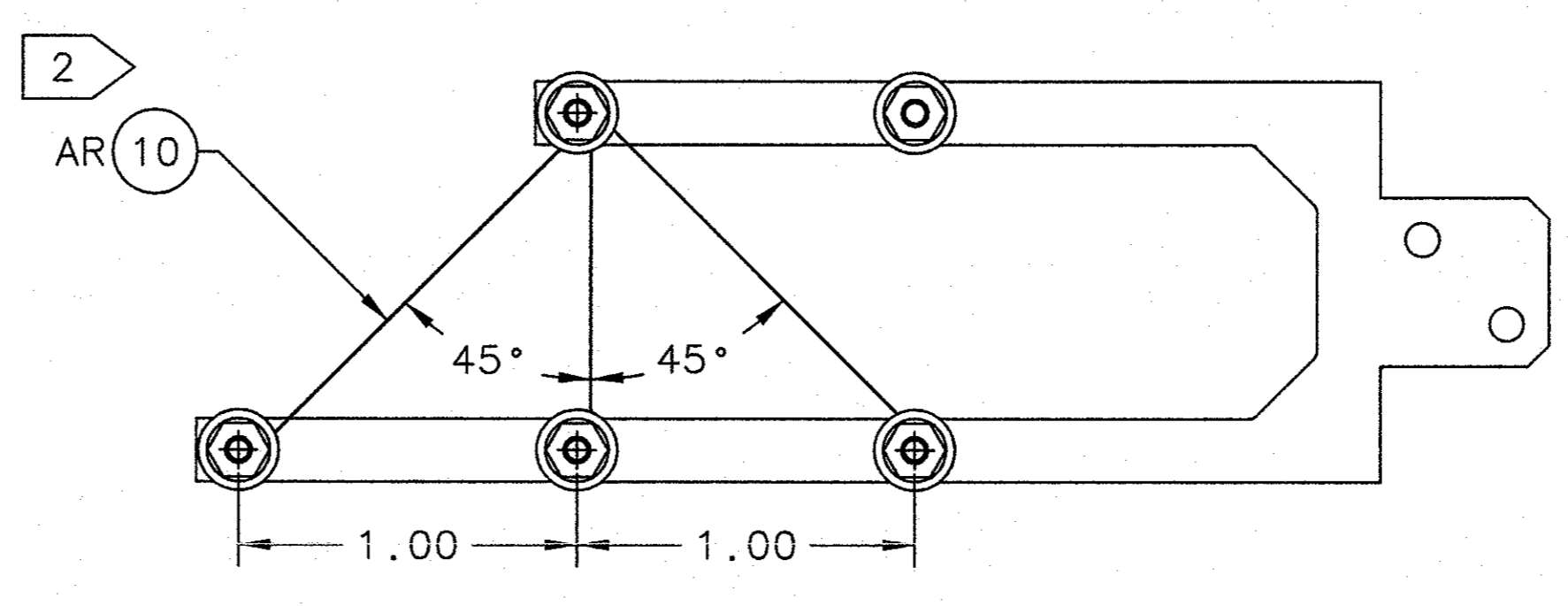


| ZONE | | REV | DESCRIPTION | DATE | APPROVED |
|------|----|-----|---------------------------------------|----------|----------|
| A4 | C2 | A | DELETED NOTE 1 & CORRESPONDING TABLE. | 9/3/11 | MLi |
| | | | BJR 08/03/11 | 08/03/11 | |



SCALE: 2:1



NOTES:
1. (NOTE DELETED)
2. USE THE FORK WIRING FIXTURE ASSEMBLY (DIA0070200-3030) & THE PROCESS OUTLINED IN SPECIFICATION (SPT0000000S0027) TO WIRE THE FORK, ITEM 2.

| ITEM NO. | QTY | PART OR IDENTIFYING NO. | PARTS LIST OR DESCRIPTION | MATERIAL SPECIFICATION | NOTES |
|----------|-----|-------------------------|---|----------------------------|-------|
| AR 10 | | HARDWARE | 20 MICRON WIRE | 75% TUNGSTEN, 25% RHENIUM | |
| 2 9 | | HARDWARE | WASHER, SPRING LOCK, #2 | 300 SERIES STAINLESS STEEL | |
| 2 8 | | HARDWARE | WASHER, FLAT, #2 | 300 SERIES STAINLESS STEEL | |
| 2 7 | | HARDWARE | PAN HEAD MACHINE SCREW, PHILLIPS DRIVE, #2-56 UNC-2A X .38 LG | 300 SERIES STAINLESS STEEL | |
| 6 6 | | HARDWARE | SOCKET HEAD CAP SCREW, #2-56 UNC-3A X .38 LG | 300 SERIES STAINLESS STEEL | |
| 3 5 | | HARDWARE | SET SCREW, CUP POINT, HEX DRIVE #8-32 UNC-3A X .19 LG | 300 SERIES STAINLESS STEEL | |
| 1 4 | | DIA0070200-3024 | HARP/SUPER HARP FLAG BOLTED SHAFT | | |
| 1 3 | | DIA0070200-3023 | HARP/SUPER HARP FLAG ADAPTER | | |
| 1 2 | | SEE CHART | HARP/SUPER HARP FORK ASSEMBLY | | 1 |
| 1 1 | | DIA0070200-3001 | SUPER HARP BODY ASSEMBLY | | |

UNITED STATES DEPARTMENT OF ENERGY
Jefferson Lab
Newport News, Virginia

DIA DEVICES
INSERTION DEVICES
SUPER HARP 45° ASSEMBLY

SCALE: 1:1

DATE: 13JUN11

APPROVED: S. WORTHINGTON

APPROVED: M. IVANO

APPROVED: L.A. DILLON-TOWNES

DO NOT SCALE DRAWING

THIRD ANGLE PROJECTION

FINISH MACHINED SURFACES UNLESS OTHERWISE NOTED DEBUR & BREAK ALL SHARP EDGES

125

UNITED STATES DEPARTMENT OF ENERGY

Jefferson Lab

DIA DEVICES
INSERTION DEVICES
SUPER HARP 45° ASSEMBLY

SCALE: 1:1

DATE: 13JUN11

APPROVED: S. WORTHINGTON

APPROVED: M. IVANO

APPROVED: L.A. DILLON-TOWNES

DO NOT SCALE DRAWING

THIRD ANGLE PROJECTION

FINISH MACHINED SURFACES UNLESS OTHERWISE NOTED DEBUR & BREAK ALL SHARP EDGES

125

UNITED STATES DEPARTMENT OF ENERGY

Jefferson Lab

DIA DEVICES
INSERTION DEVICES
SUPER HARP 45° ASSEMBLY

SCALE: 1:1

DATE: 13JUN11

APPROVED: S. WORTHINGTON

APPROVED: M. IVANO

APPROVED: L.A. DILLON-TOWNES

DO NOT SCALE DRAWING

THIRD ANGLE PROJECTION

FINISH MACHINED SURFACES UNLESS OTHERWISE NOTED DEBUR & BREAK ALL SHARP EDGES

125