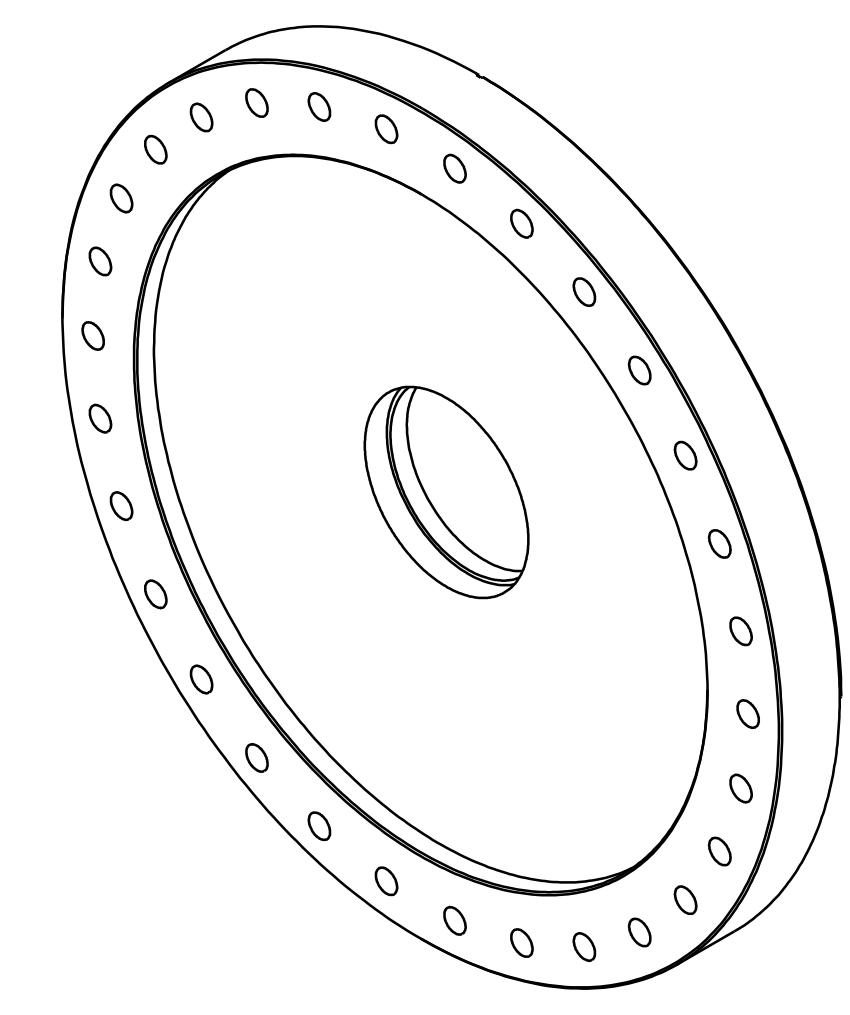
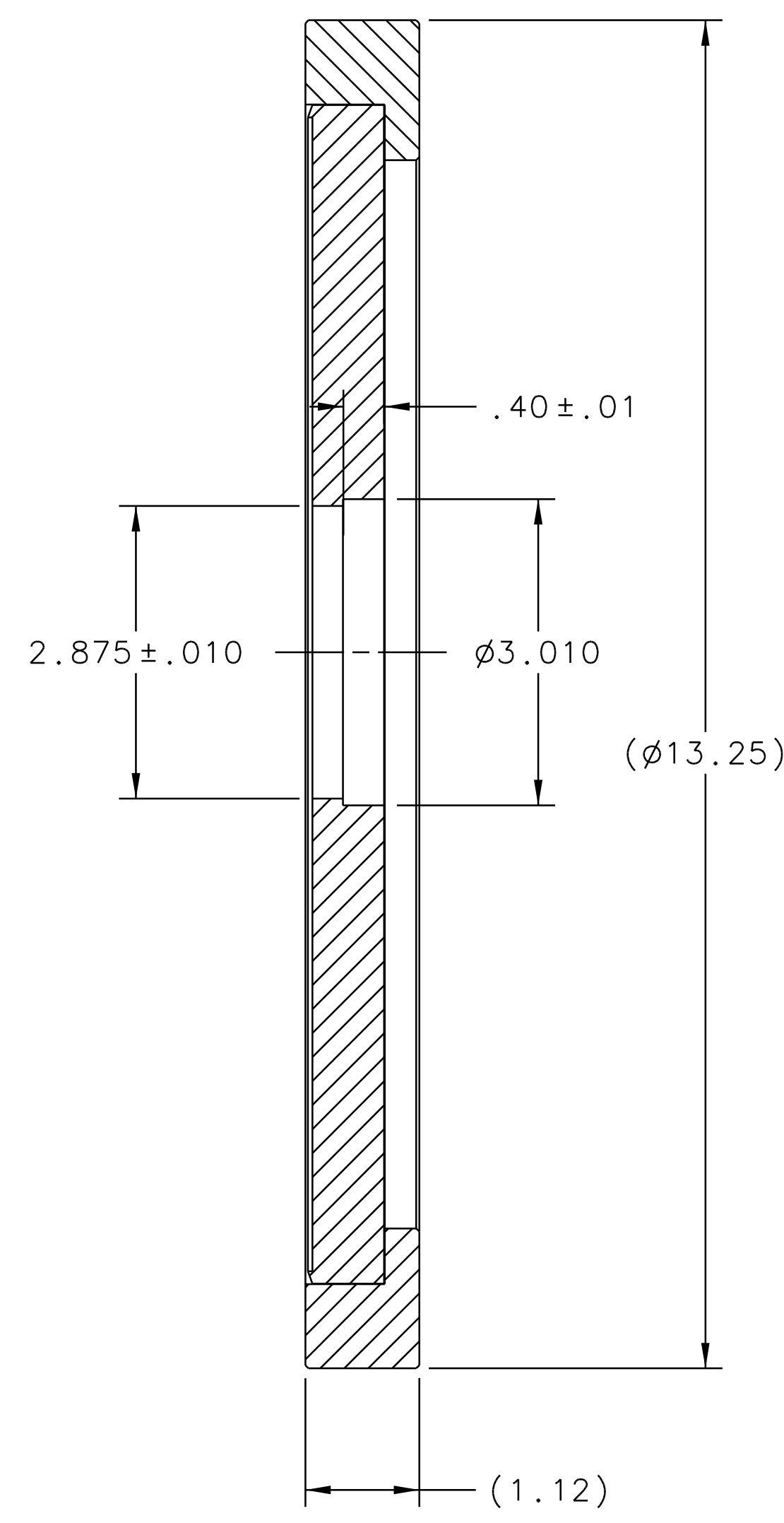
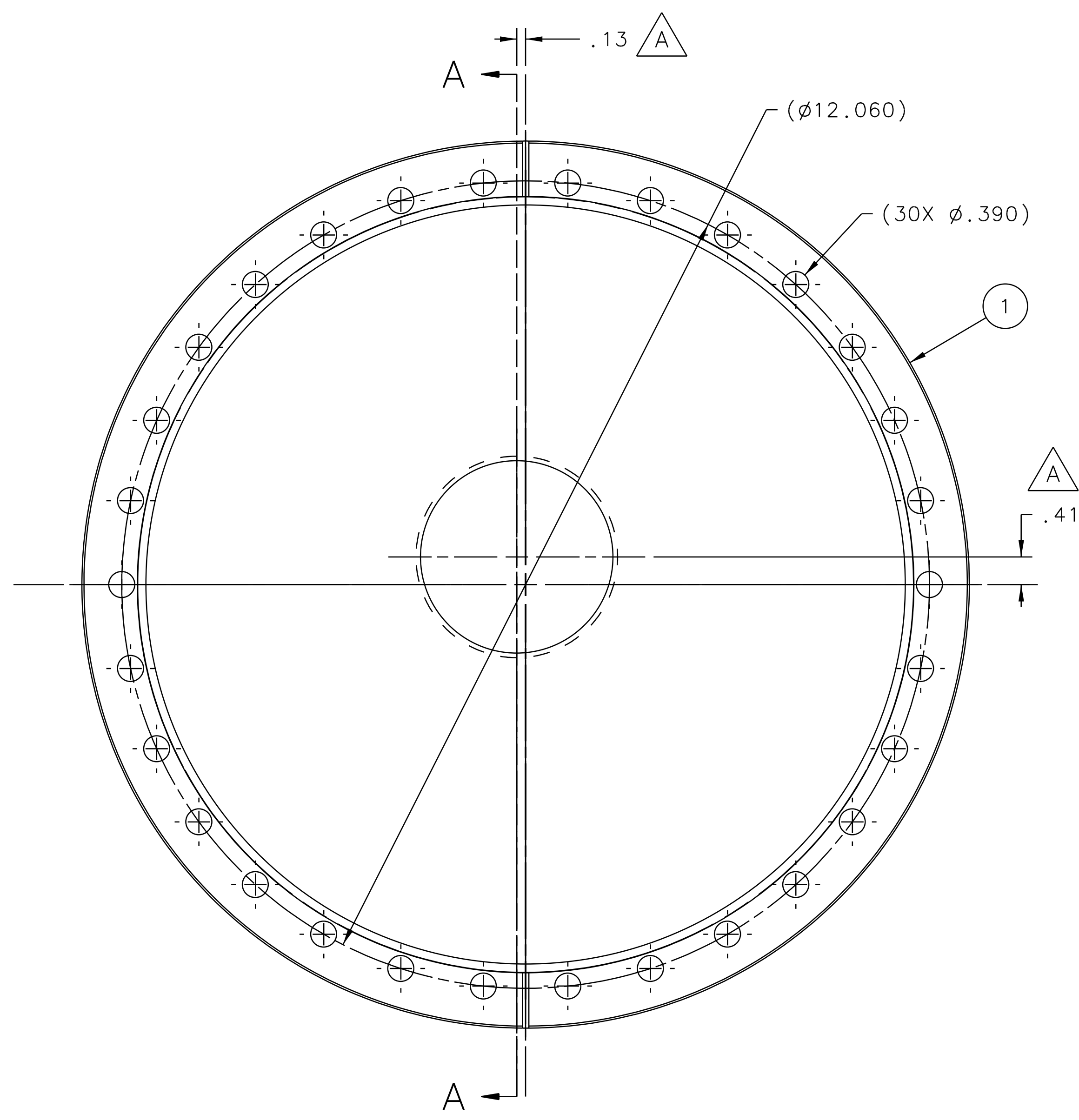


REVISION HISTORY				
ZONE	REV	DESCRIPTION	DATE	APPROVED
-	A	POSITION OF THE HOLE 2.875 DIA. CHANGED. DIM'S .13 & .41 ADDED. VGR 19JUN13		R.GETZ T.WHITLATCH



- NOTES:
- THE FOLLOWING JLAB SPECIFICATIONS APPLY:
 FABRICATION OF UHV EQUIPMENT 22631-S-001 REV.B
 CLEANING AND HANDLING OF UHV COMPONENTS ... 22632-S-001 REV.E
 - SUGGESTED SOURCE OR JLAB APPROVED EQUIVALENT:
 A. MDC VACUUM PROD. (800)443-8817 www.mdcvacuum.com

SECTION A-A

QTY REQD	ITEM NO.	PART OR IDENTIFYING NO.	NOMENCLATURE OR DESCRIPTION	MATERIAL SPECIFICATION	NOTES
1	1	MDC #110034	DEL-SEAL CF FLANGE 13.25 OD CLEARANCE, R, BLANK	STAINLESS STEEL 304	

DOCUMENT CONTROL STAMP	DIM & TOL PER ASME Y14.5 UNLESS OTHERWISE SPECIFIED DIMENSIONS ARE IN INCHES TOLERANCES ARE: FRACTIONS DECIMAL ANGLES ± N/A .XX ± .02 ± .50° .XXX ± .005	TRACKING NO. N/A		United States Department of Energy Jefferson Lab Thomas Jefferson National Accelerator Facility Newport News Virginia
		APPROVALS	DATE	
MATERIAL SEE PARTS LIST	THIRD ANGLE PROJECTION	DRAWN VGR	6AUG12	HALL D GLUE-X BEAMLINE TAGGER AREA VAC. FLANGE 13.25 CF-R X 3.01 BORE
FINISH MACHINED SURFACES DEBURR & BREAK ALL SHARP EDGES	125 UNLESS OTHERWISE NOTED	CHECKED R.GETZ		SIZE DWG. NO. D D00000-02-02-2006
DO NOT SCALE DRAWING		APPROVED R.GETZ		REV. A
		APPROVED T.WHITLATCH		SCALE 3:4 USED ON ASSY NO. D00000-02-02-1005 SHEET 1 OF 1