

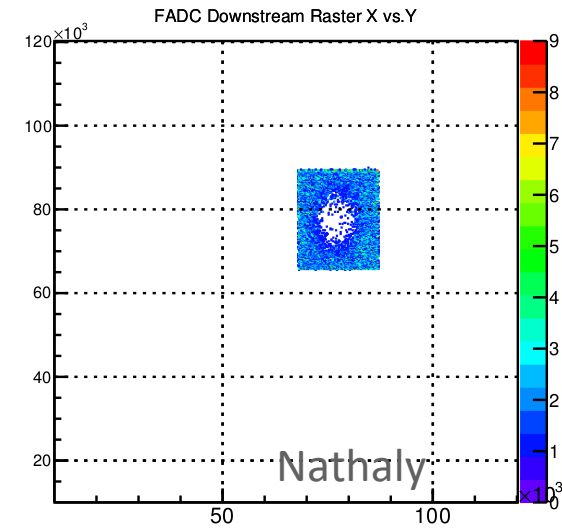
Hall-A RC Update

(Sep. 26th to Oct. 3rd)

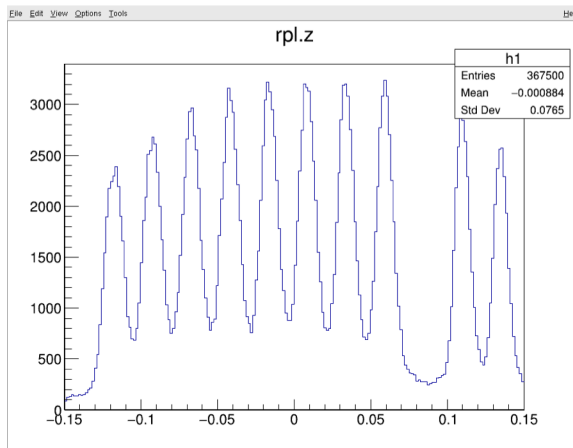
Zhihong Ye

➤ General Summary

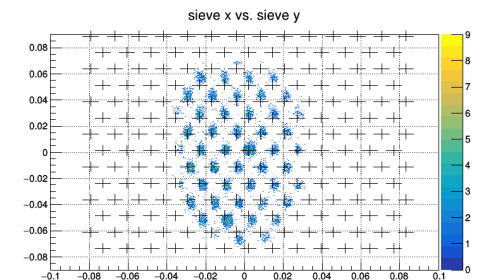
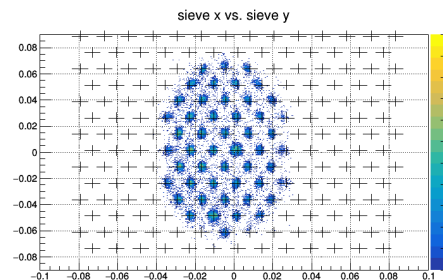
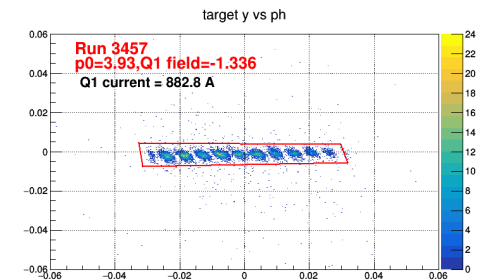
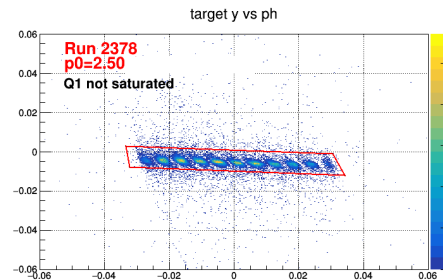
- 5th Beam was first delivered on last Wednesday afternoon; Phase-I
- Complete the Start-up commissioning tasks (Ion-Chamber, Beam Centering, Raster-size, Bull's eyes, Detector and Trigger checkout, etc.)



- Put Sieve-slit in in the Thursday morning; Started taking optics data since then until Friday morning;



Nathaly

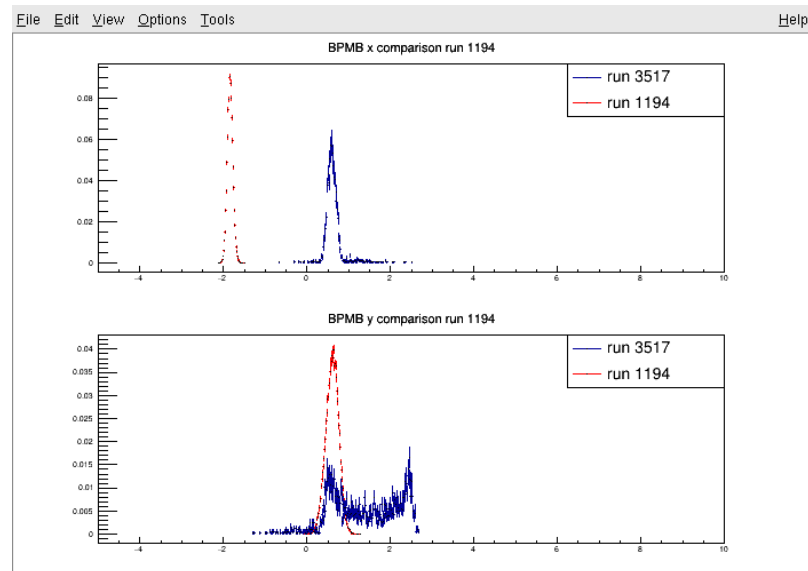
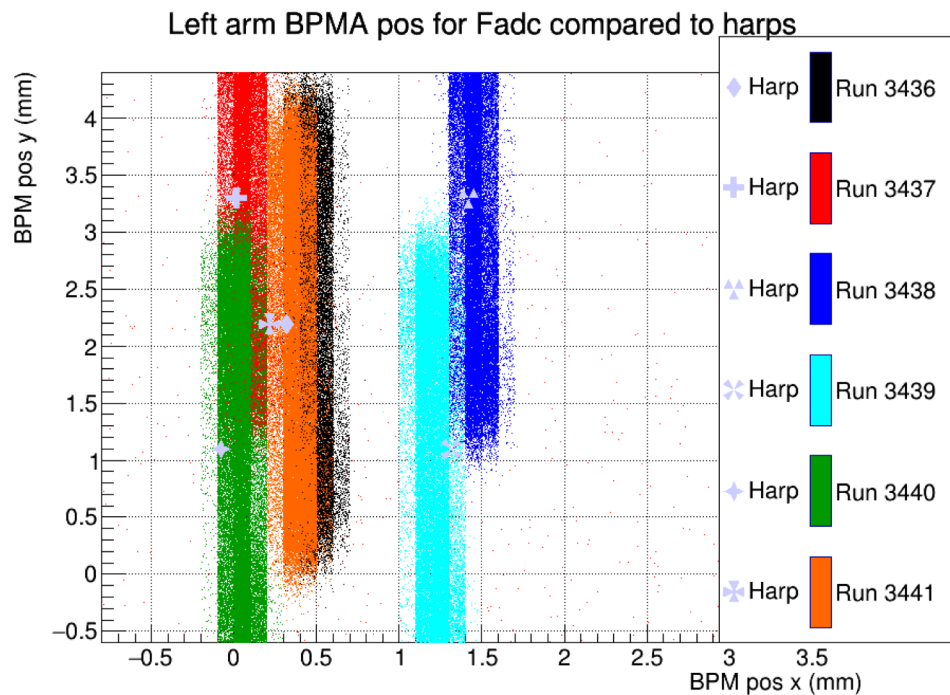


Shujie



➤ General Summary

- Finished optics on Friday morning; Sieve out
- Pass changed from 5th to 2nd; 2nd beam came into the hall at noon;
- Another round of start-up commissioning at 2nd pass.
- Bull's eye scan was stuck due to the wired signals of the BPMA/B Y direction;



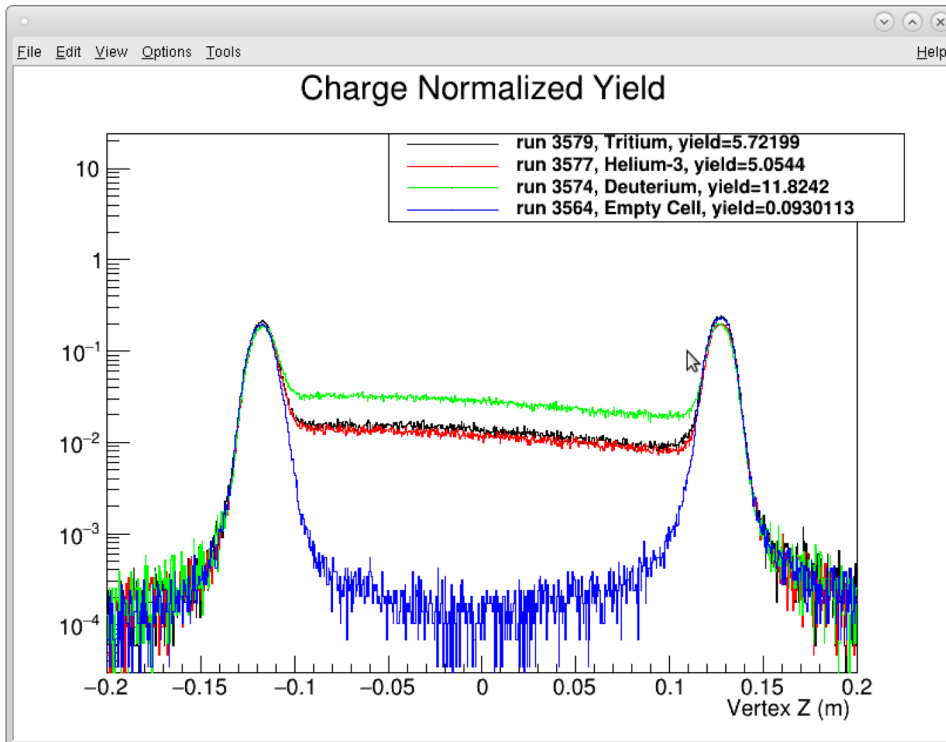
Jason, Nathaly, Shujie

- Failed to go to Phase-III during the night



➤ General Summary

- Took all solid targets at $x=1$ and $x>2$ kinematic while investigating BPM-Y issues
- During the Saturday day, looked more into BPM-Y signals and was convinced that the beam position and raster size are known and under controlled.
- Decided to go to Phase-III with this pending issues. Started taking production data while the beam was not good during the weekend



Shujie



- Interior truck rump door opened again this morning (third times, last two times also happened during the SRC periods → “SRC ghost”)



➤ General Summary

- Finished $x=1$ kinematic setting on Monday; Started $x>1$ kinematic afterward
- On Monday midnight, asked Hall-C to reduce beam current from 60uA to 40uA, so we had the stable beam; Started Boiling study;
- Finish boiling on Tuesday morning; Finished all important calibration runs;
- Went back to $x>1$ kinematic; Then will go to $x>2$ kinematic

Pending Issues:

- Wired signals from Y of BPM A/B
- One PRJ2 channel has possible fluctuation signals
- Energy Lock not fully functioning
- Position lock not reliable (random on/off)
- Beam stability
- ...