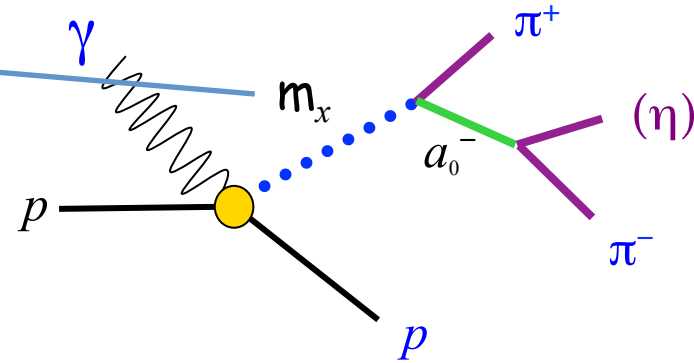
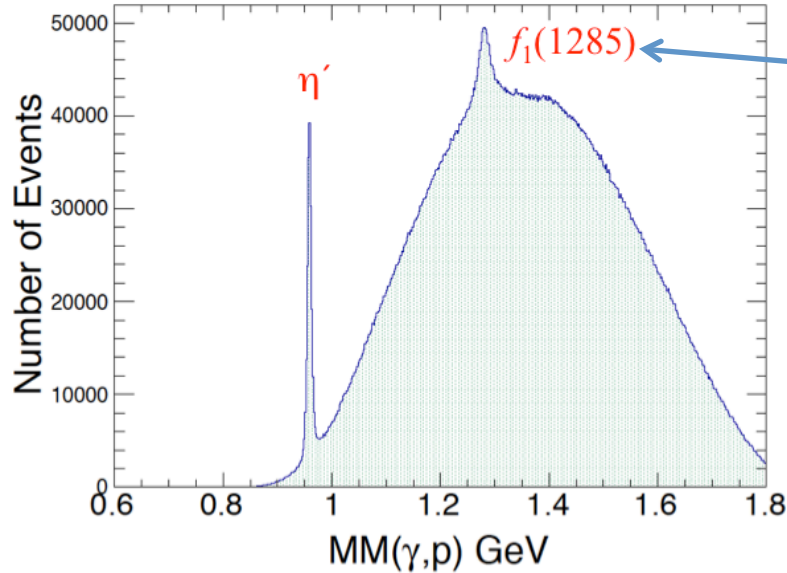
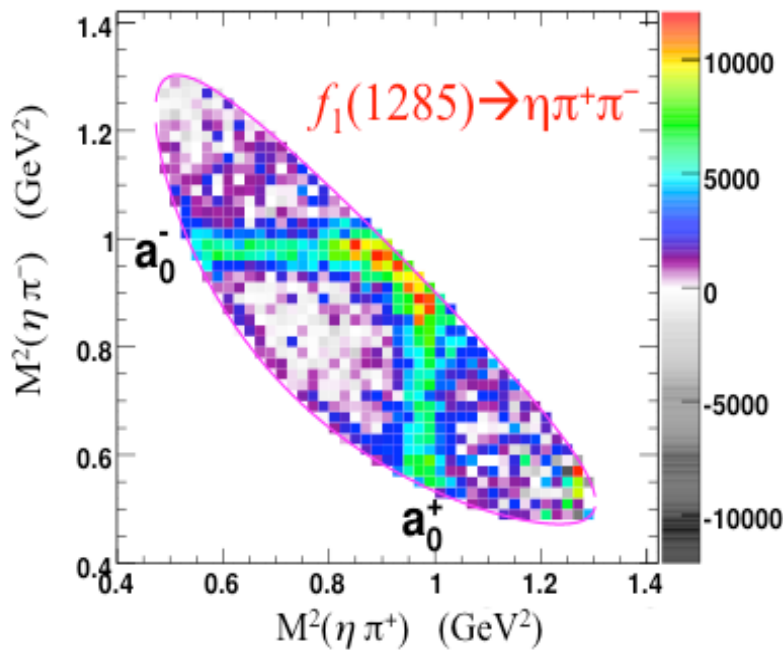


First Photoproduction of the $f_1(1285)$ Meson



- $\gamma + p \rightarrow x + p ; x \rightarrow \eta \pi^+ \pi^- ; x = ?$
- Identity of the meson “ x ” could be the $f_1(1285)$, or the $\eta(1295)$
- Dalitz plot amplitude analysis separates $J^P = 1^+$ from $J^P = 0^-$ spin and parity
- CLAS sees the $f_1(1285)$, not the $\eta(1295)$
- Production is via helicity system, not Gottfried-Jackson system dominance
- Precise mass, width, differential cross sections, & branching fractions given



R. Dickson, R. A. Schumacher *et al.* (CLAS Collaboration), *Photoproduction of the $f_1(1285)$ Meson*, *Physical Review C* **93**, 065202 (2016).