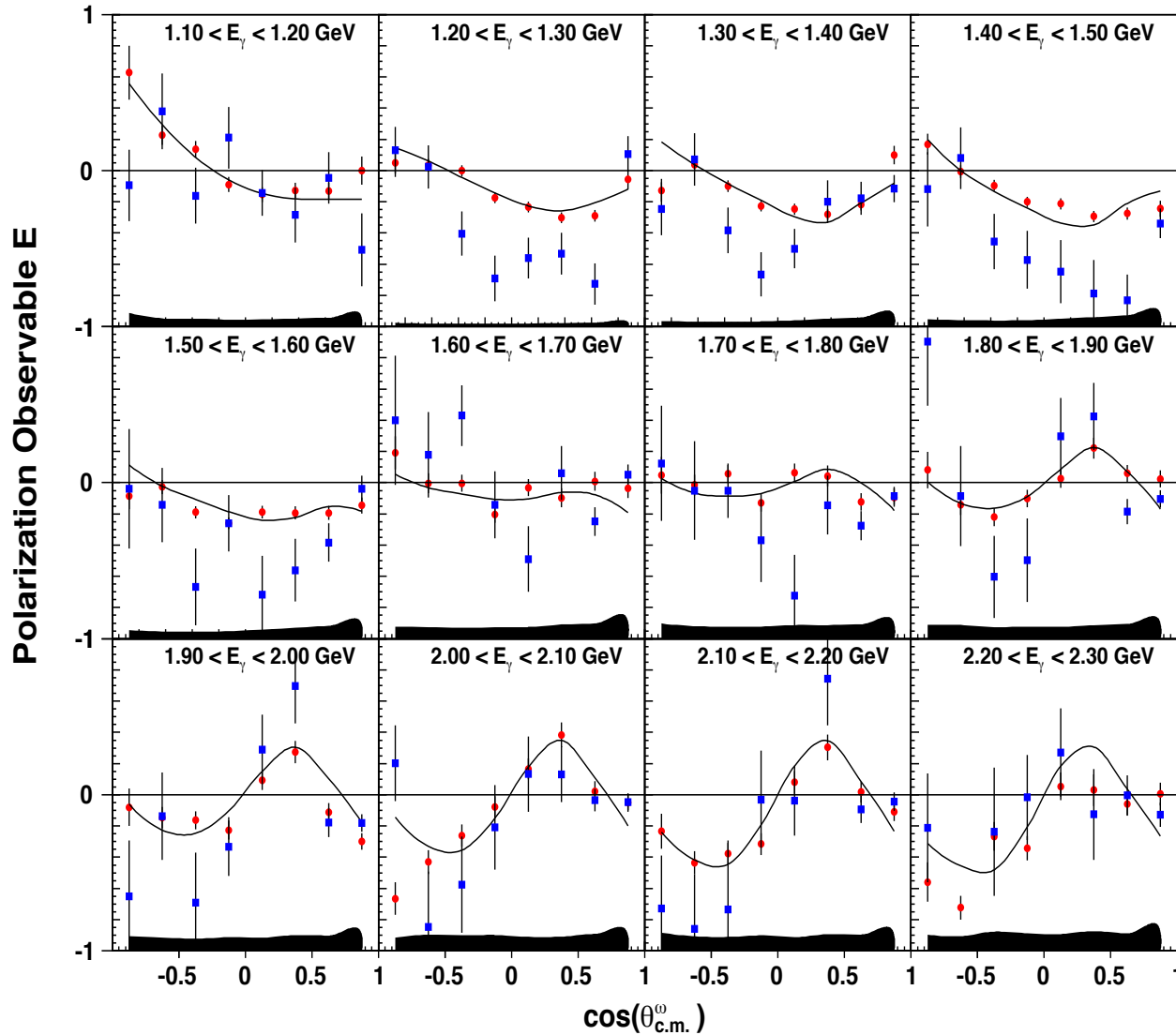


Helicity Asymmetry in $\vec{\gamma} \vec{p} \rightarrow p \omega$ (CLAS g9a)



BnGa (coupled-channels) PWA

- Dominant \mathbf{P} exchange
- Complex $3/2^+$ wave
 - ① $N(1720)$
 - ② $W \approx 1.9$ GeV
- $N(1895) 1/2^-$ (new state)
- $N(1680), N(2000) 5/2^+$
- $7/2$ wave > 2.1 GeV

● CLAS-g9a

■ CBELSA/TAPS

Phys. Lett. B **750**, 453 (2015)

Z. Akbar *et al.* [CLAS Collaboration], Phys. Rev. C **96**, no. 6, 065209 (2017)

