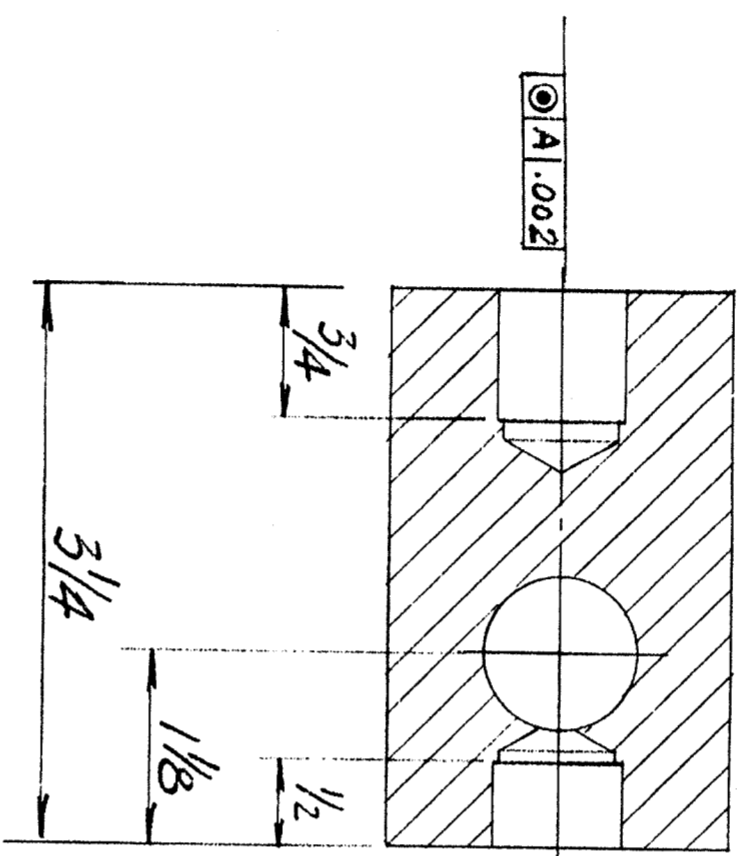
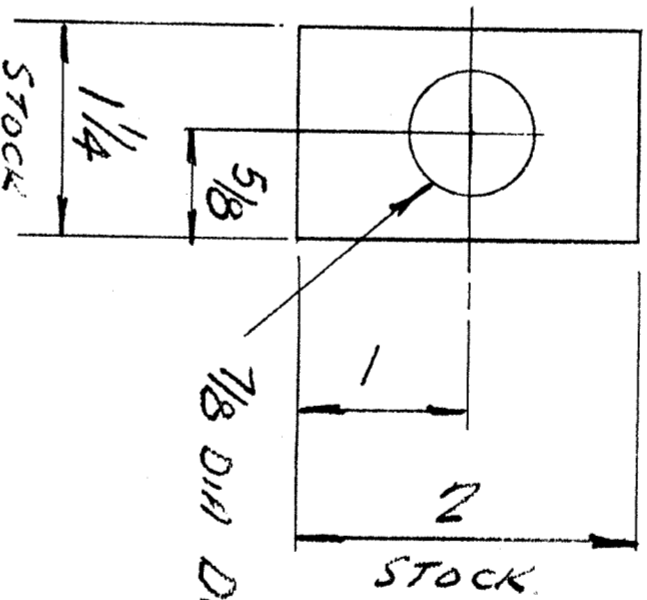


PROPRIETARY DATA OF STANFORD UNIVERSITY AND/OR U. S. ATOMIC ENERGY COMMISSION.  
 RECIPIENT SHALL NOT PUBLISH THE WITHIN INFORMATION WITHOUT SPECIFIC PERMISSION  
 OF STANFORD UNIVERSITY.



.751 ± .001 DIA  
 (TYP)  
 -A-



MATERIAL: ST STL TYP 304

COIL # 4 ONLY

5-9-62-261-561-P1

|  |   |   |
|--|---|---|
| <p>SCALE: 1:1</p> <p>UNLESS OTHERWISE SPECIFIED, DIMENSIONS ARE IN INCHES.</p> <p>TOLERANCES: BREAK EDGES .005-.015</p> <p>FACT: ± .005</p> <p>INT. COR. .015 R. MAX.</p> <p>ANGLES ± .1° ALL SURF. 125°</p> | <p>DO NOT SCALE DRAWING</p> <p>STANFORD LINEAR ACCELERATOR CENTER<br/>       U. S. ATOMIC ENERGY COMMISSION<br/>       STANFORD UNIVERSITY STANFORD, CALIFORNIA</p> <p>DESIGNER: J. B. NATHAN<br/>       DRAWN: J. B. NATHAN<br/>       CHECKED: J. B. NATHAN</p> <p>DATE: 9.1.62</p> | <p>NEXT ASSEMBLY:</p> <p>LA55 / DIRMAY B/W/W</p> <p>MISC DEMO PARTS - R.A. THE BOLD</p> <p>COLD END PIVOT BLOCK COIL # 4 ONLY</p> <p>PF - 735 - 732 - 20-Rd B</p> |
|--|---|---|

MFRD