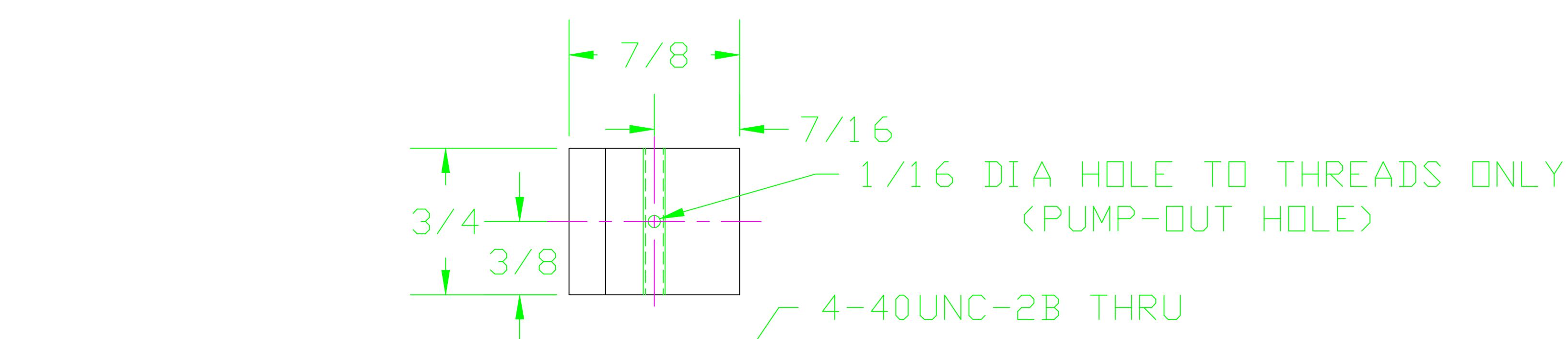
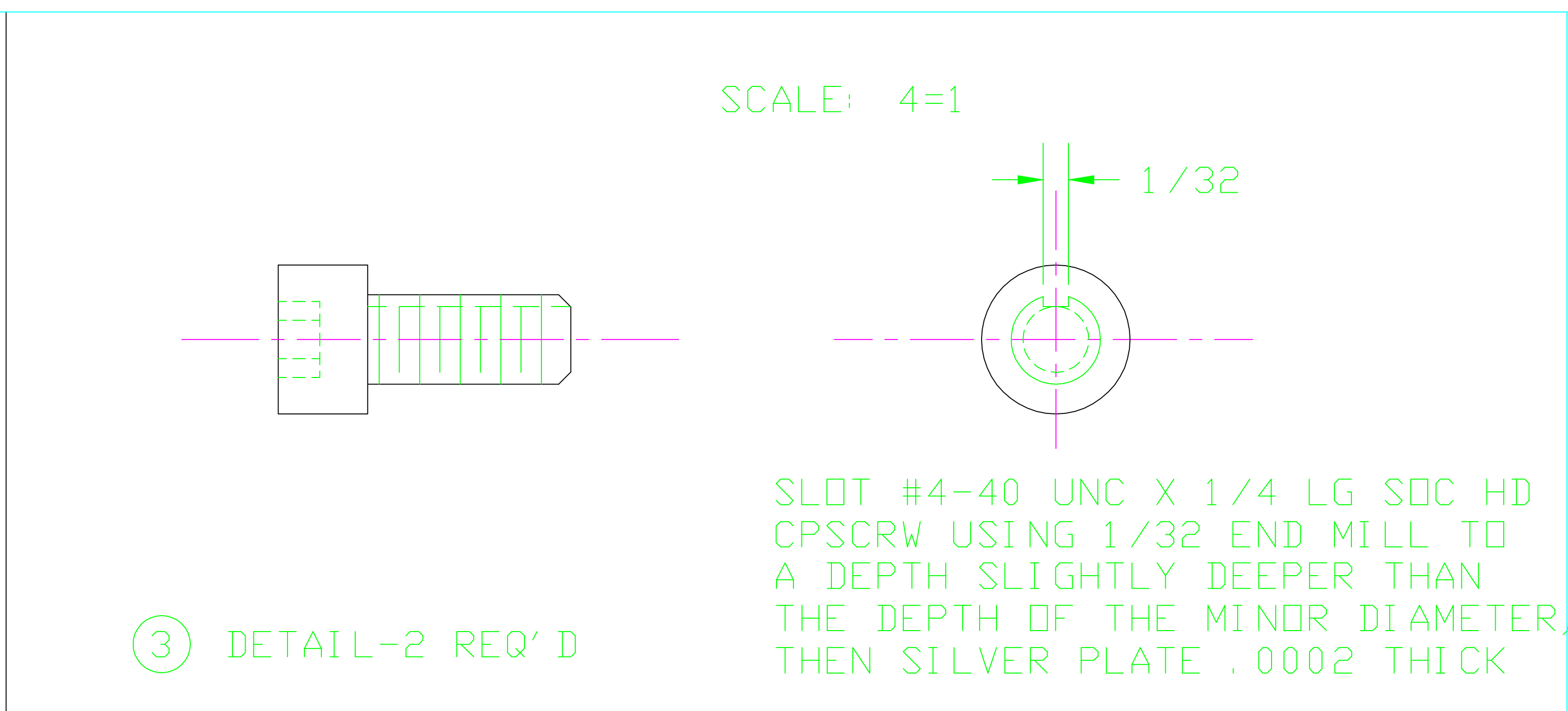
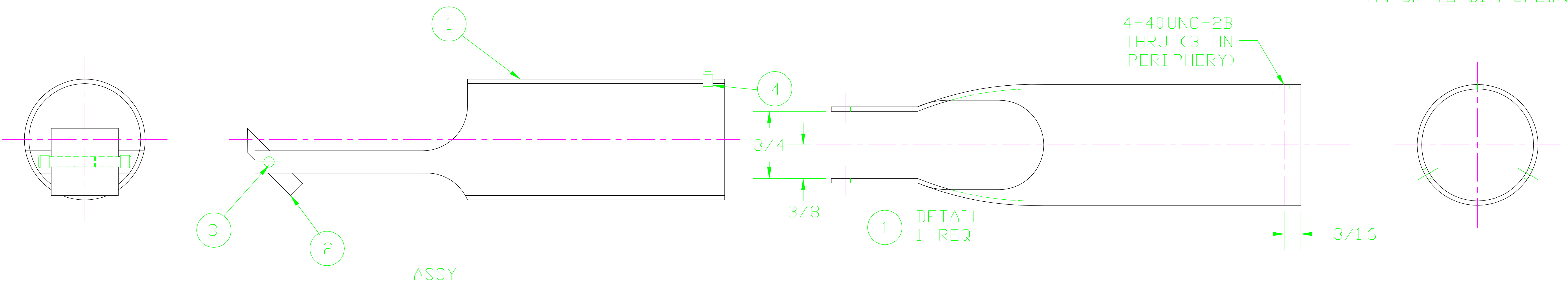
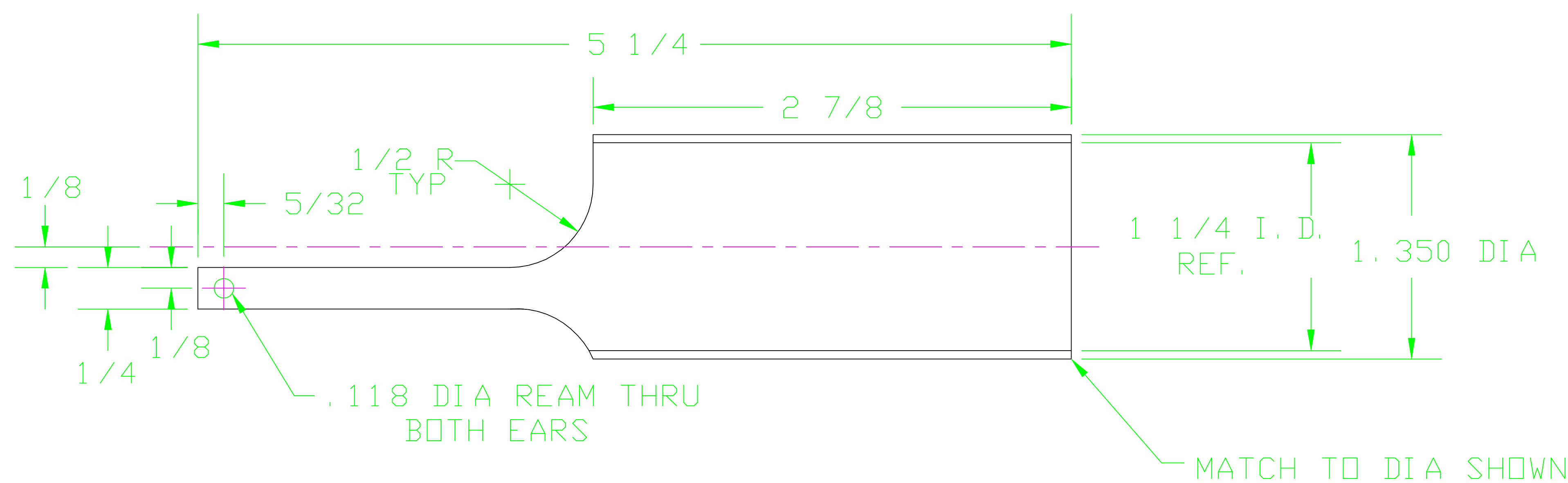


REV.	DATE	DESCRIPTION	BY	APP' D
1	10-88	REV NOTE ON DETAIL ③	SPESE	
2	6-89	REV MATERIAL FOR PART ①	WAALER	



② DETAIL 1 REQ



NOTES:

- SCREWS TO BE SILVER PLATED .0002 THK
- ALL MACHINING TO BE DONE WITH SULFUR-FREE CUTTING OIL.

NOTE 1

4		SOC SET SCR (1/2 DOG-POINT) #4-40 UNCx1/8 LG	SST	3
3		SOC HD CAP SCR #4-40 UNCx1/4 LG (SEE DETAIL)	SST	2
2		MIRROR 1/4 THK	304 SST	1
1		TUBING 1-3/8 DIA X .065 WALL	304 SST	1
ITEM	PART NO.	DESCRIPTION		QTY

DRAWN BY	NUCLEAR PHYSICS LABORATORY		MIRROR ASSEMBLY	
SPESE	UNIVERSITY OF ILLINOIS AT URBANA-CHAMPAIGN			
CHECKED BY	UNLESS OTHERWISE SPECIFIED		PART NO.	SCALE
	DIMENSIONS IN INCHES 2 PLACE DEC. ± .01		NO. REQ' D.	1=1
APPROVED BY	BREAK SHARP CORNERS 3 PLACES DEC. ± .003		CHASSIS NO. OR MATERIAL LISTED	DATE
	FRACTIONAL ± 1/32' ANGULAR ± 0° 30'			7-10-88
				DWG. NO.
				C-2709-17

SLAC: SA795-641-23-R0MODIFIED