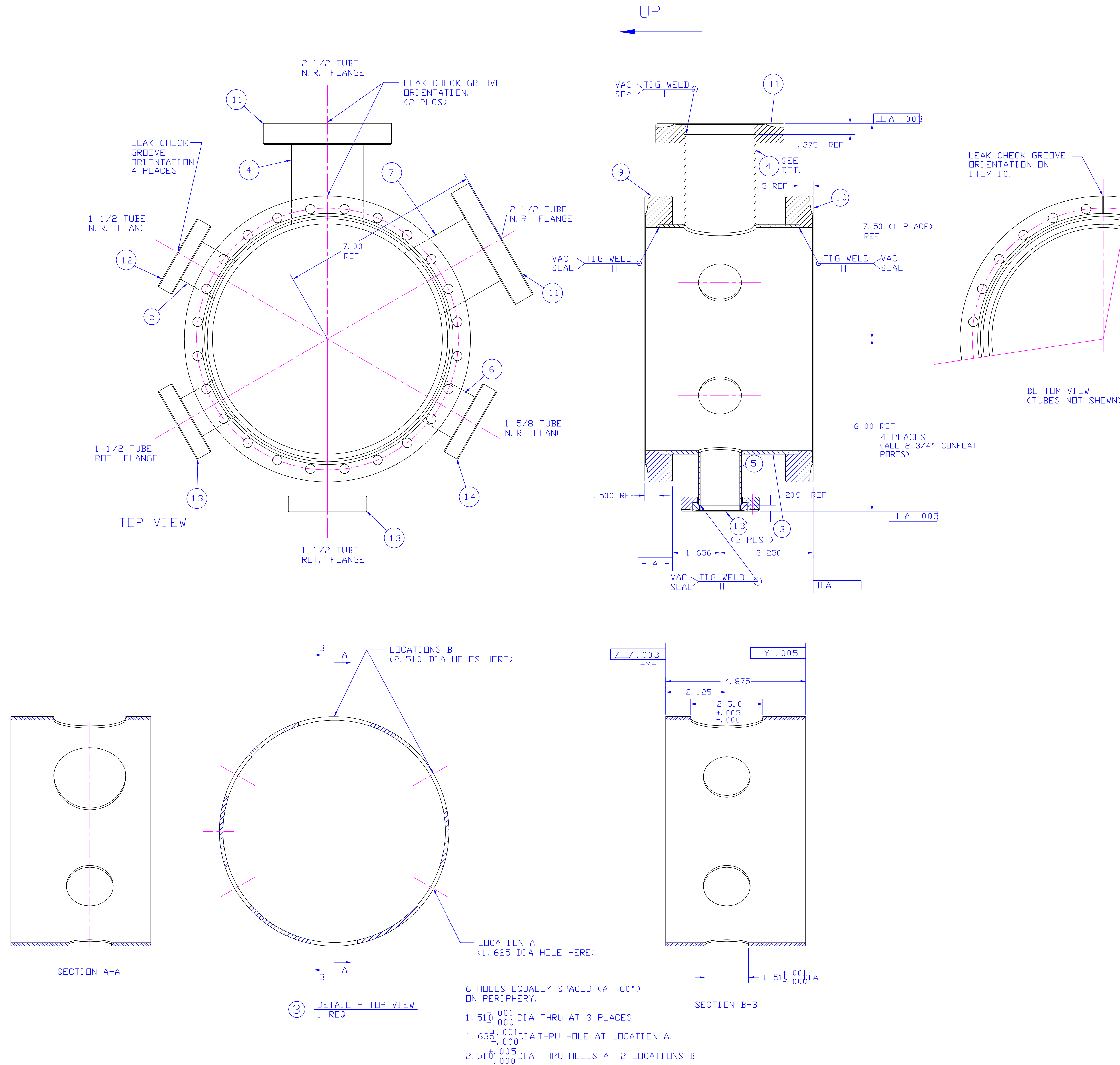
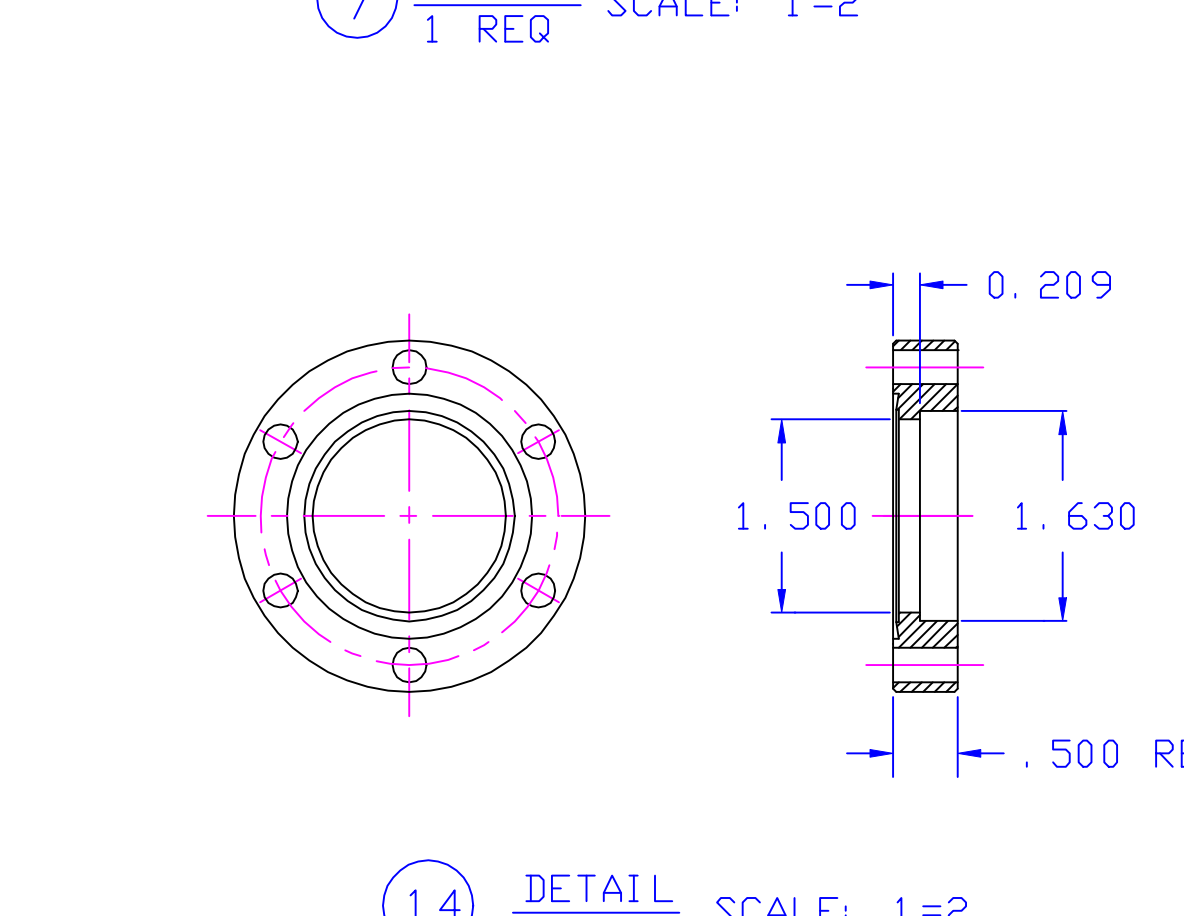
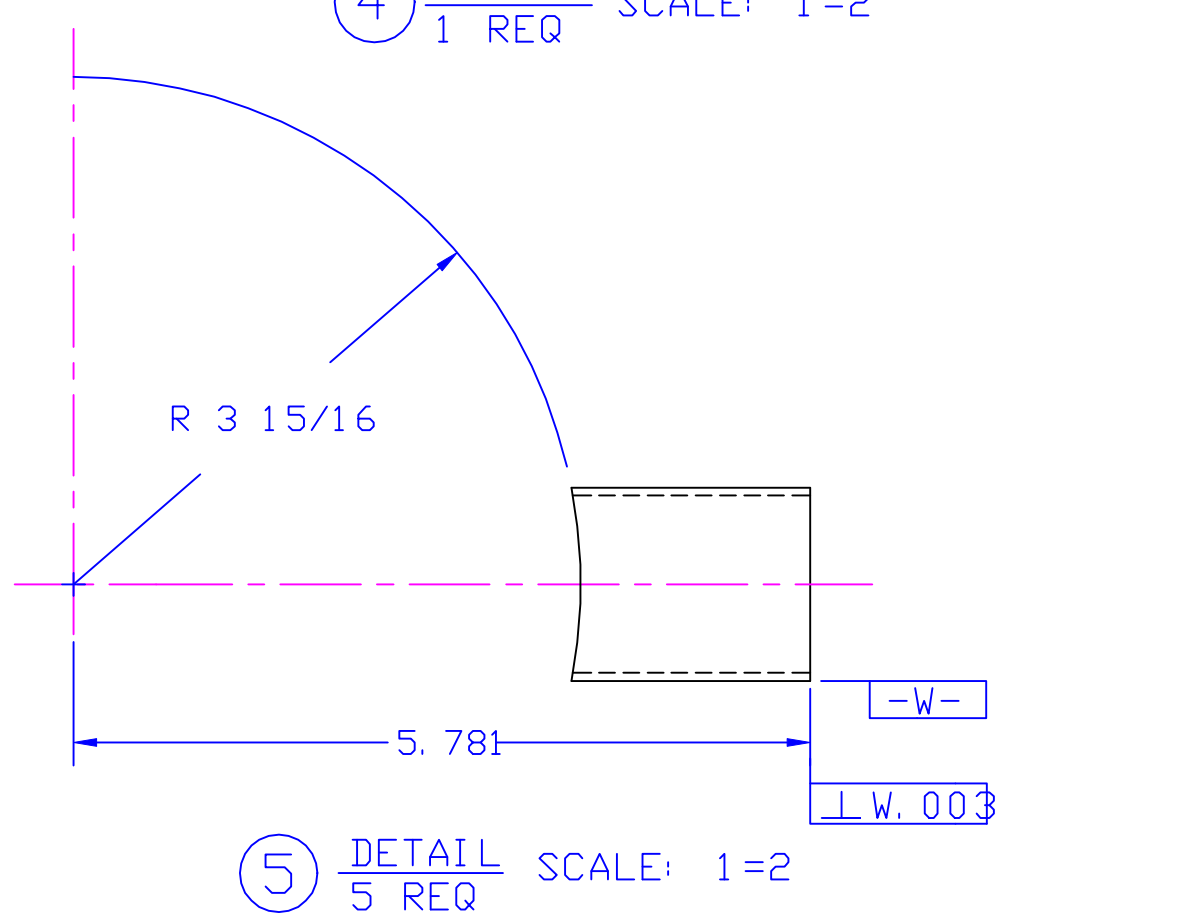
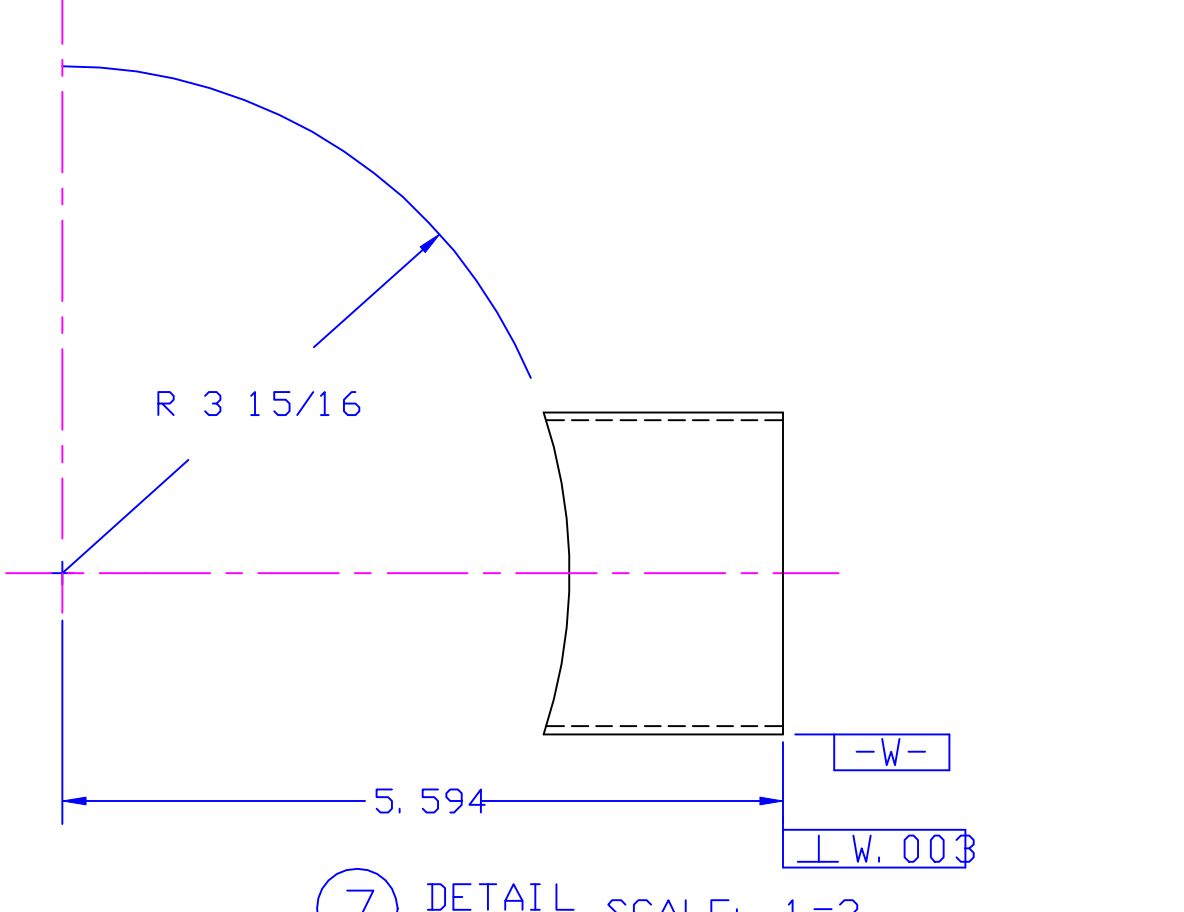
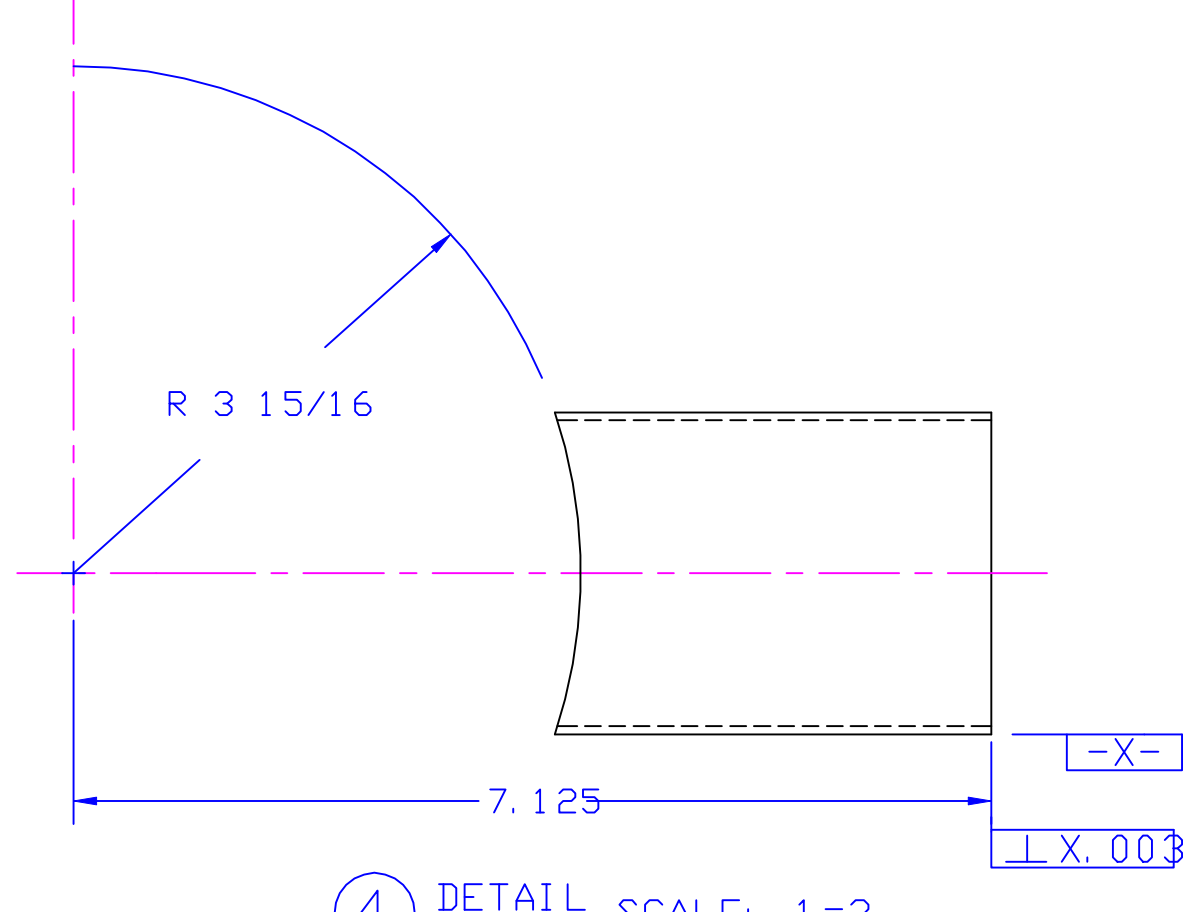
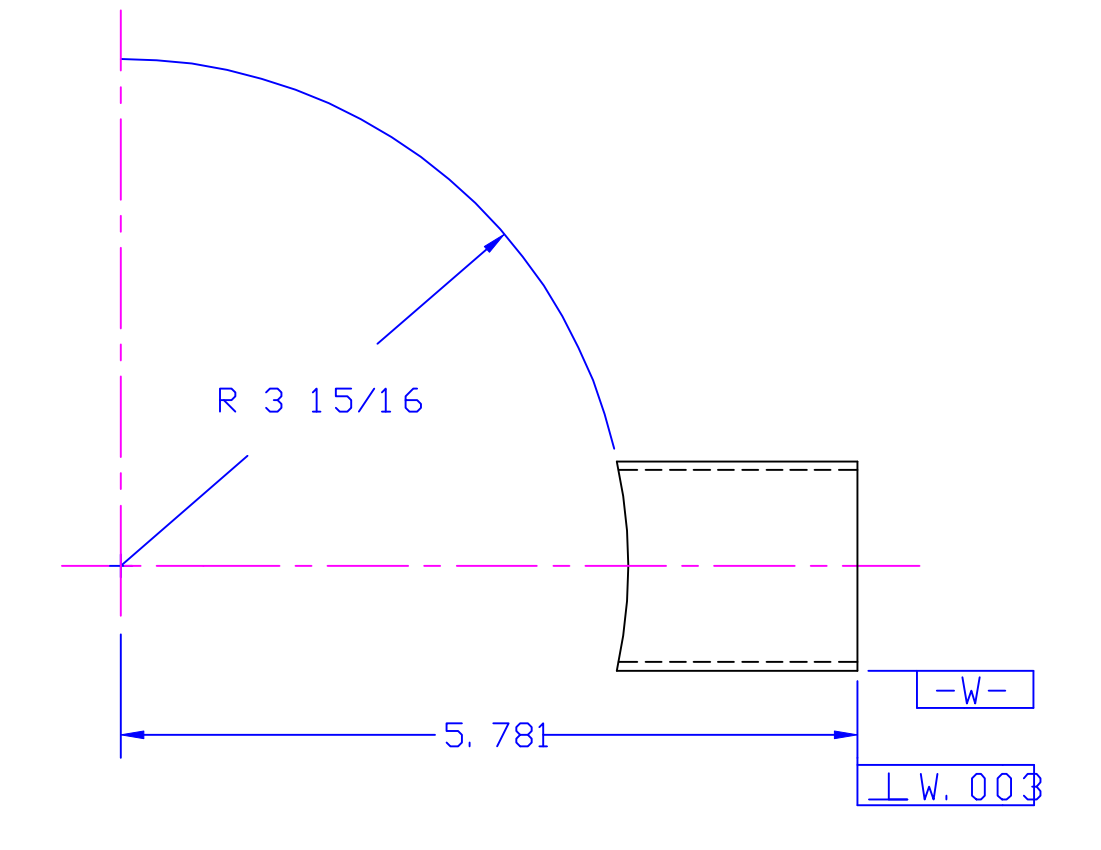


REV.	DATE	DESCRIPTION	BY	APP'D
1	10-88	ADDED NOTE 5	URIBE	
2	11-88	REVISED NOTE 5	URIBE	
3	6-89	MODIFIED FOR 2 ROTATABLE FLANGES	WAALER	
4	10-91	MODIFIED FOR SECOND 4 1/2" FLANGE	URIBE	
5	2-92	INCREASED TUBE LENGTH FOR ITEM 7 DIMENSIONED TUBES ARE MORE ACCURATE	URIBE	



NOTES

- ITEMS 9, 10, 11, 12 MDC PRODUCTS CORP., HAYWARD, CA OR EQUAL.
- ALL MACHINING TO BE DONE WITH SULFUR-FREE CUTTING OIL.
- DO NOT USE EMERY TO ACHIEVE FINAL FINISH.
- OBSERVE LEAK GROOVE ORIENTATION; ON ALL ARMS THE GROOVES ARE AT THE TOP, ON THE TOP AND BOTTOM THE GROOVES ARE ALIGNED WITH THE AXIS OF THE LARGE ARM.
- ADD A HOLE 1/2" DEEP (3/8" FOR 2 3/4" FLANGES) TAPPED FOR A #8-32 SCREW TO EACH FLANGE. THE HOLES ARE TO BE RADIAL AND CENTERED IN THE FLANGE AND LOCATED 90° (45° FOR THE 2 3/4" FLANGES) CLOCKWISE FROM THE VERTICAL LEAK GROOVE ON THE "ARM" FLANGES. ON THE TOP AND BOTTOM FLANGES MAKE TWO SUCH HOLES LOCATED AT 90° FROM EACH LEAK GROOVE.



NOTE 1 AND NOTE 5

ITEM	PART NO.	DESCRIPTION	QTY.
14		NONROTATABLE CONFLAT FLANGE (2 3/4" O.D.) #F275150 MODIFIED AS SHOWN	1
13		ROTATABLE CONFLAT FLANGE (2 3/4" O.D.) #F275150R	2
12		NONROTATABLE CONFLAT FLANGE (2 3/4" O.D.) #F275150	1
11		NONROTATABLE CONFLAT FLANGE (4 1/2" O.D.) #F450250	2
10		NONROTATABLE CONFLAT FLANGE (10" O.D.) #F1000800	1
9		NONROTATABLE CONFLAT FLANGE (10" O.D.) #F1000800	1
7		SEAMLESS TUBING 2 1/2 O.D. X .065 WALL 304 L SST	1
6		SEAMLESS TUBING 1 5/8 O.D. X .065 WALL 304 L SST	1
5		SEAMLESS TUBING 1 1/2 O.D. X .065 WALL 304 L SST	4
4		SEAMLESS TUBING 2 1/2 O.D. X .065 WALL 304 L SST	1
3		SEAMLESS TUBING 8" O.D. X .120 WALL 304 L SST	1

ITEM	PART NO.	DESCRIPTION	QTY.
DRAWN BY: URIBE, NUCLEAR PHYSICS LABORATORY, UNIVERSITY OF ILLINOIS AT URBANA-CHAMPAIGN			
CHECKED BY: UNLESS OTHERWISE SPECIFIED			
APPROVED BY:		PART NO.:	SCALE: 1=2
DIMENSIONS IN INCHES 2 PLACE DEC. ± 01		NO. REQ'D:	FILE 15
BREAK SHARP CORNERS 3 PLACES DEC. ± 003		CHASSIS NO. OR MATERIAL LISTED:	DATE: 8-31-89
FRACTIONAL ± 1/32" ANGULAR ± 30'			DWG. NO. D-2709-18A