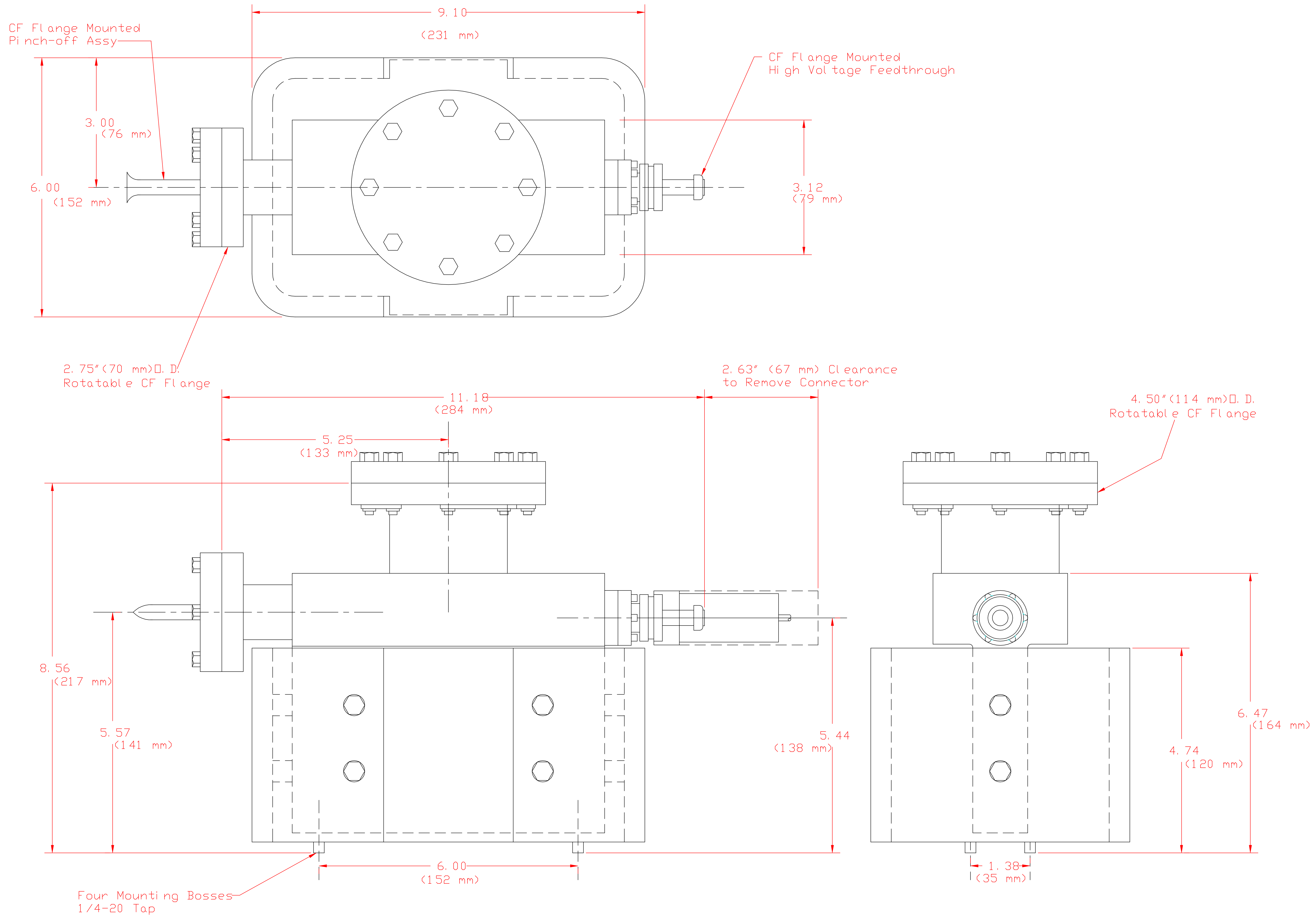


REV.	DATE	DESCRIPTION	BY	APP'D
1	10/88	REV DRAWING DIMENSIONS	SPESE	



PERKIN-ELMER 30 L/S DIFFERENTIAL ION PUMP #204-3000

DRAWN BY SPESE	NUCLEAR PHYSICS LABORATORY UNIVERSITY OF ILLINOIS AT URBANA-CHAMPAIGN	30 LITER/SEC ION PUMP		
CHECKED BY	UNLESS OTHERWISE SPECIFIED	PART NO.	SCALE 1/2=1	FILE 12
APPROVED BY	DIMENSIONS IN INCHES 2 PLACE DEC. ± .01 BREAK SHARP CORNERS 3 PLACES DEC. ± .003 FRACTIONAL ± 1/32" ANGULAR ± 0° 30'	NO. REQ'D.	DATE 7-11-88	DWG. NO. C-2709-23
		CHASSIS NO. OR MATERIAL LISTED		