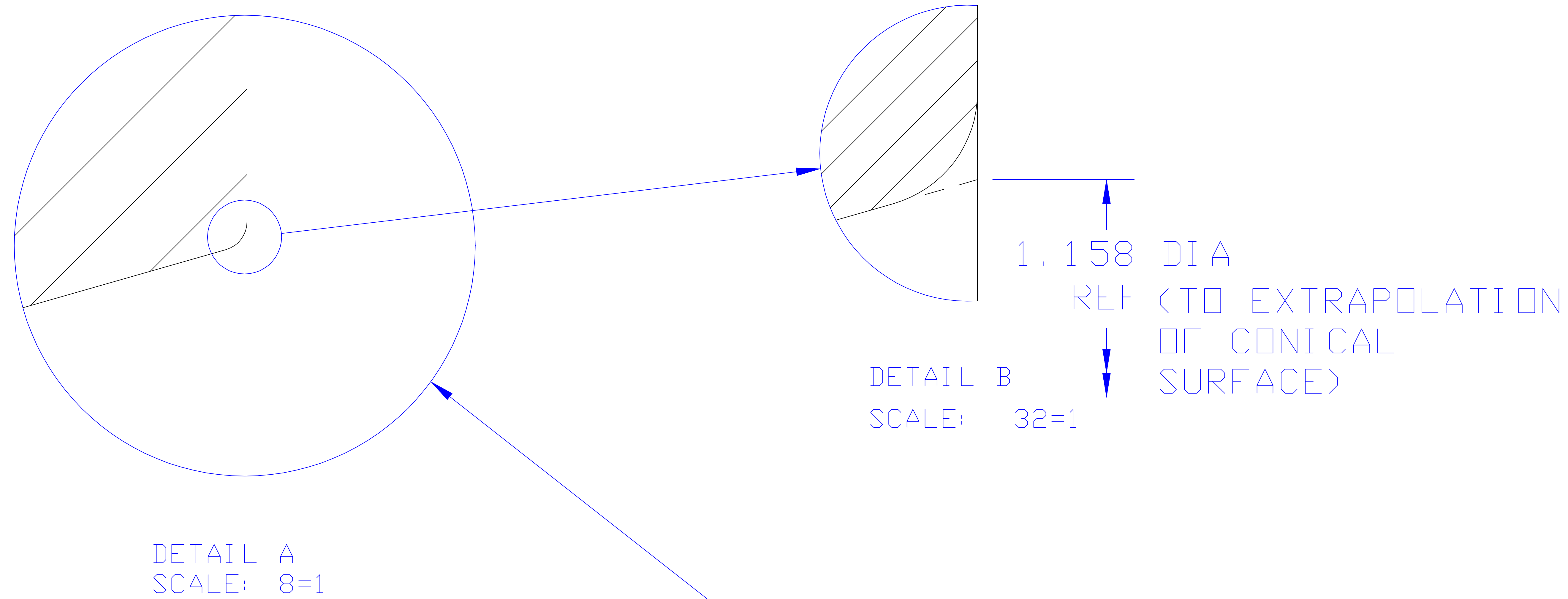
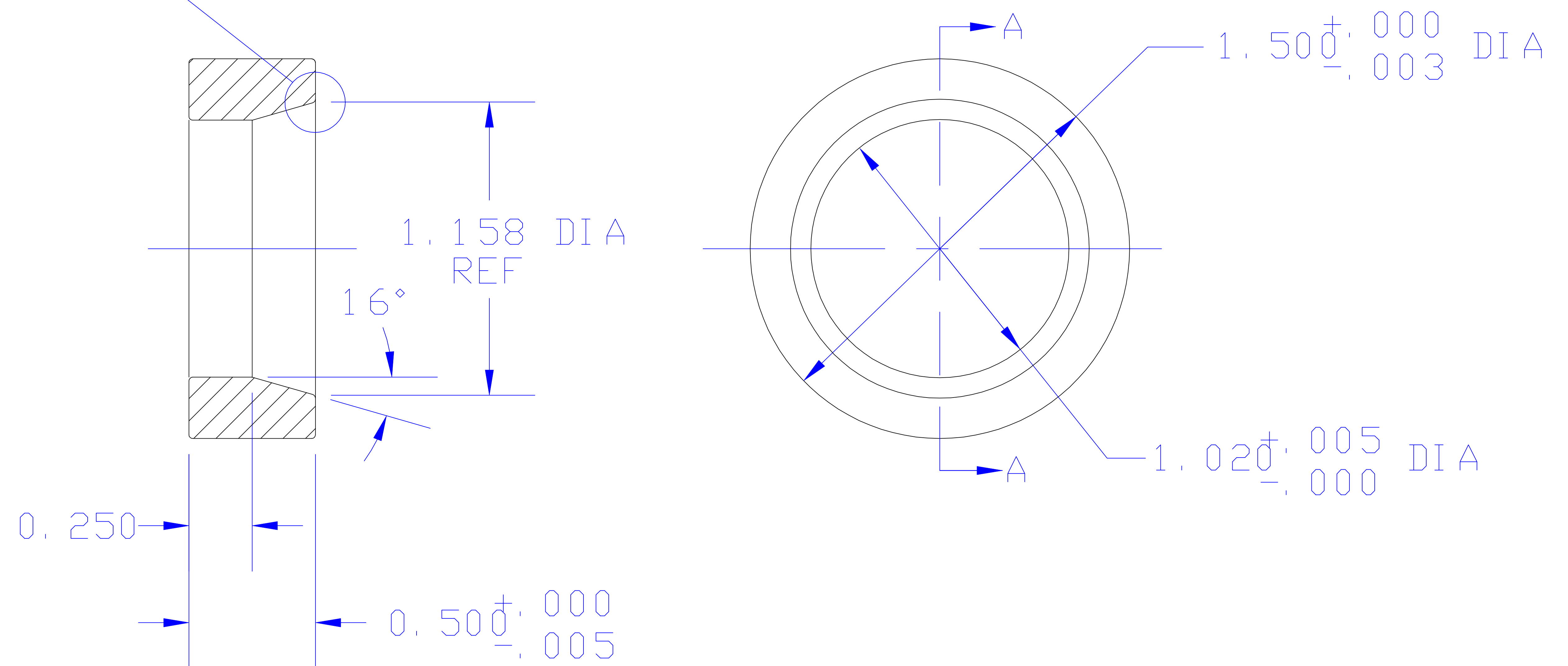


REV.	DATE	DESCRIPTION	BY	APP'D
1	10-89	ADDED NOTE 4	WAALER	
2	12-89	ADDED 1.18 REF DIMENSION	WAALER	
3	12-89	1.020 WAS 1.015	WAALER	
4	3-91	ADDED DETAILS A AND B, CORRECTED REF DIA	URIBE	



NOTES

1. MATERIAL: ALUMINA
2. BLEND JOINT BETWEEN CONICAL AND CYLINDRICAL ID'S
3. ALL CORNERS: $\geq .015R$
4. USE ONLY ETHYL ALCOHOL AS A LUBRICANT WHEN GRINDING



SECT. A-A

DRAWN BY URIBE	NUCLEAR PHYSICS LABORATORY UNIVERSITY OF ILLINOIS AT URBANA-CHAMPAIGN	EMITTER STALK CENTERING RING		
CHECKED BY	UNLESS OTHERWISE SPECIFIED	PART NO.	SCALE 2=1	FILE 15
APPROVED BY	DIMENSIONS IN INCHES 2 PLACE DEC. $\pm .01$ BREAK SHARP CORNERS 3 PLACES DEC. $\pm .003$ FRACTIONAL $\pm 1/32$ ANGULAR $\pm 0^{\circ}30'$	NO. REQ'D.	DATE 7-10-88	DWG. NO. C-2709-34A
		CHASSIS NO. OR MATERIAL LISTED		