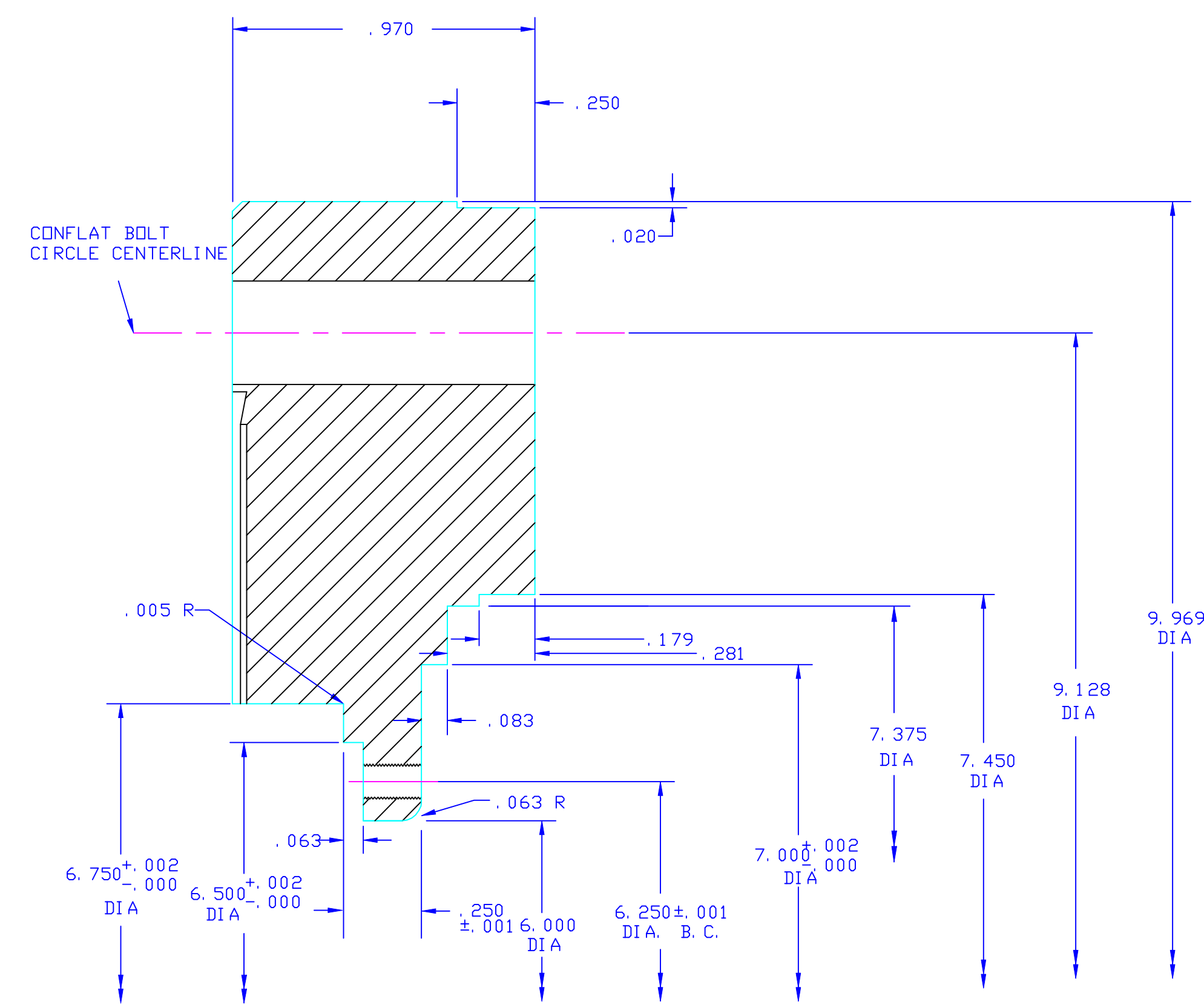
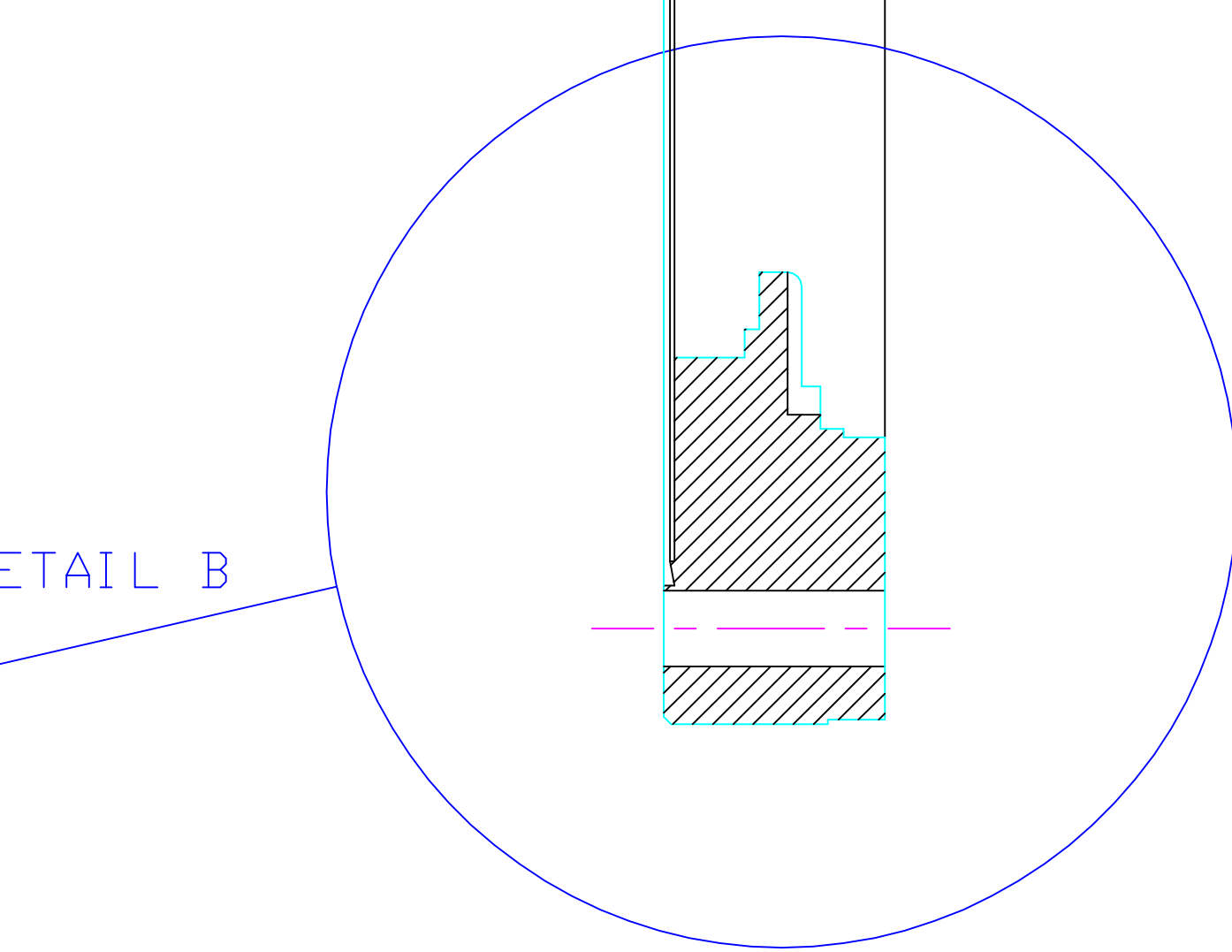
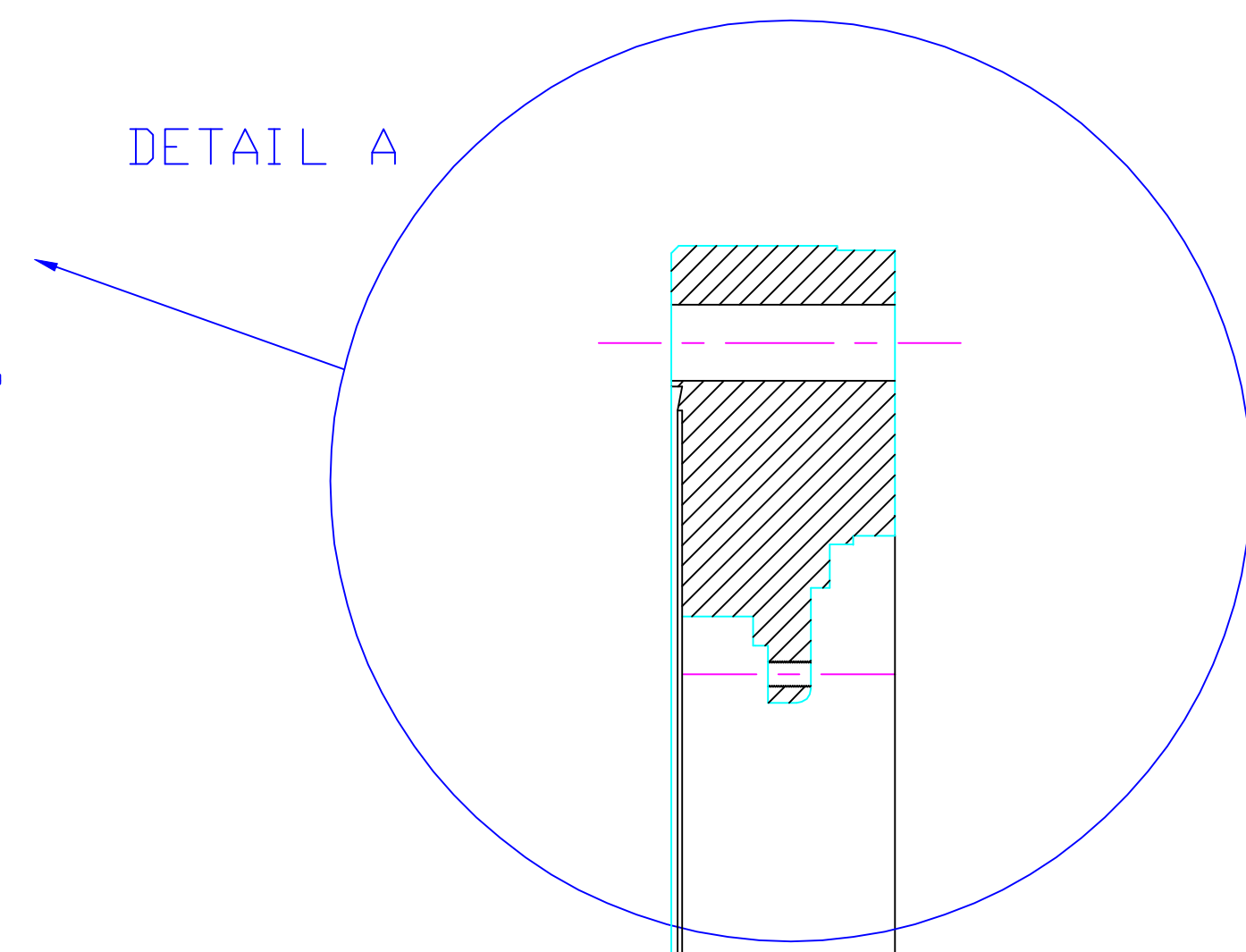


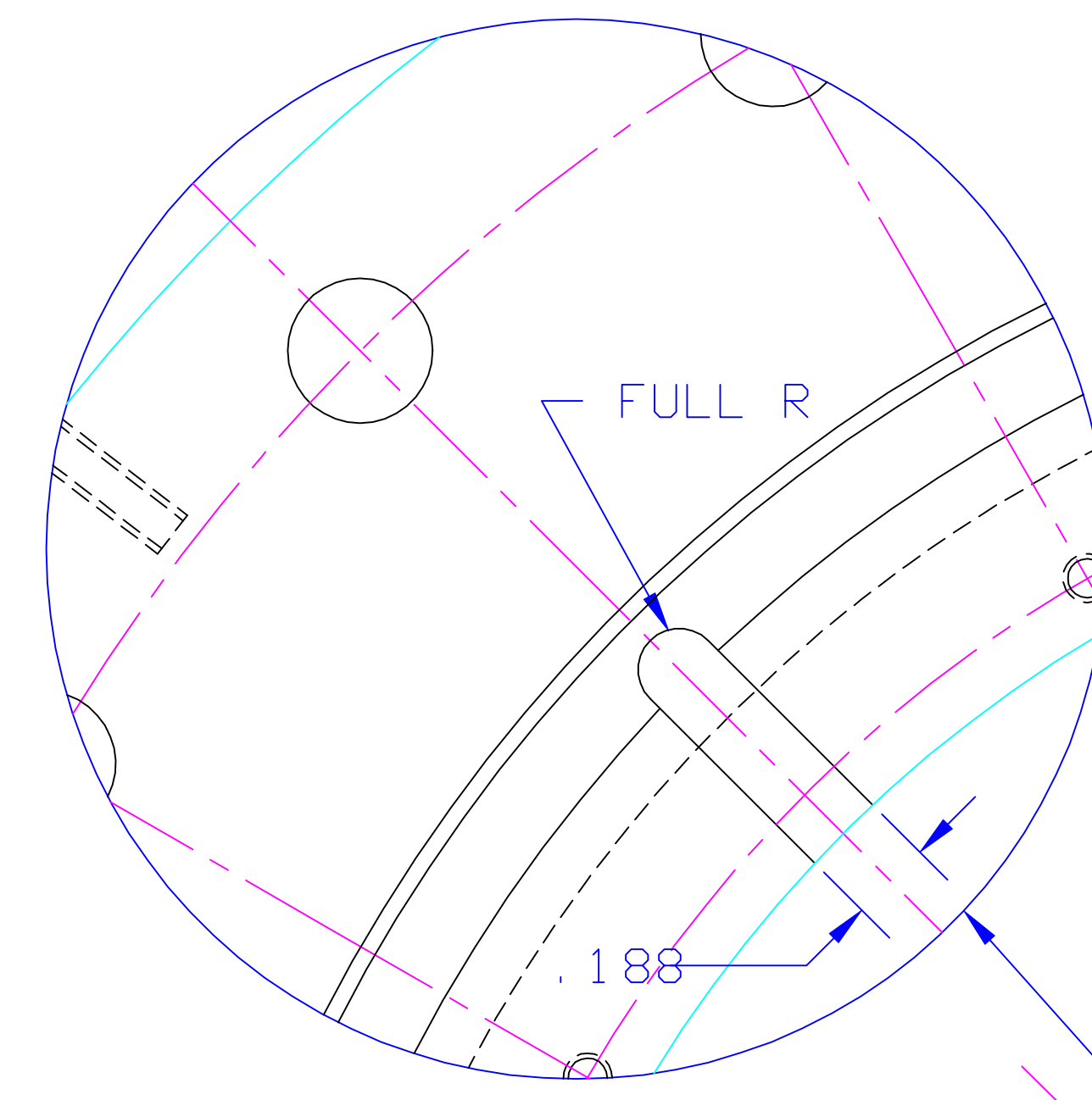
REV.	DATE	DESCRIPTION	BY	APP'D
1	7-89	MODIFIED WELD PREPARATION	WALLER	
2	2-91	REARRANGED DRAWING TO MATCH SECTIONS	URIBE	



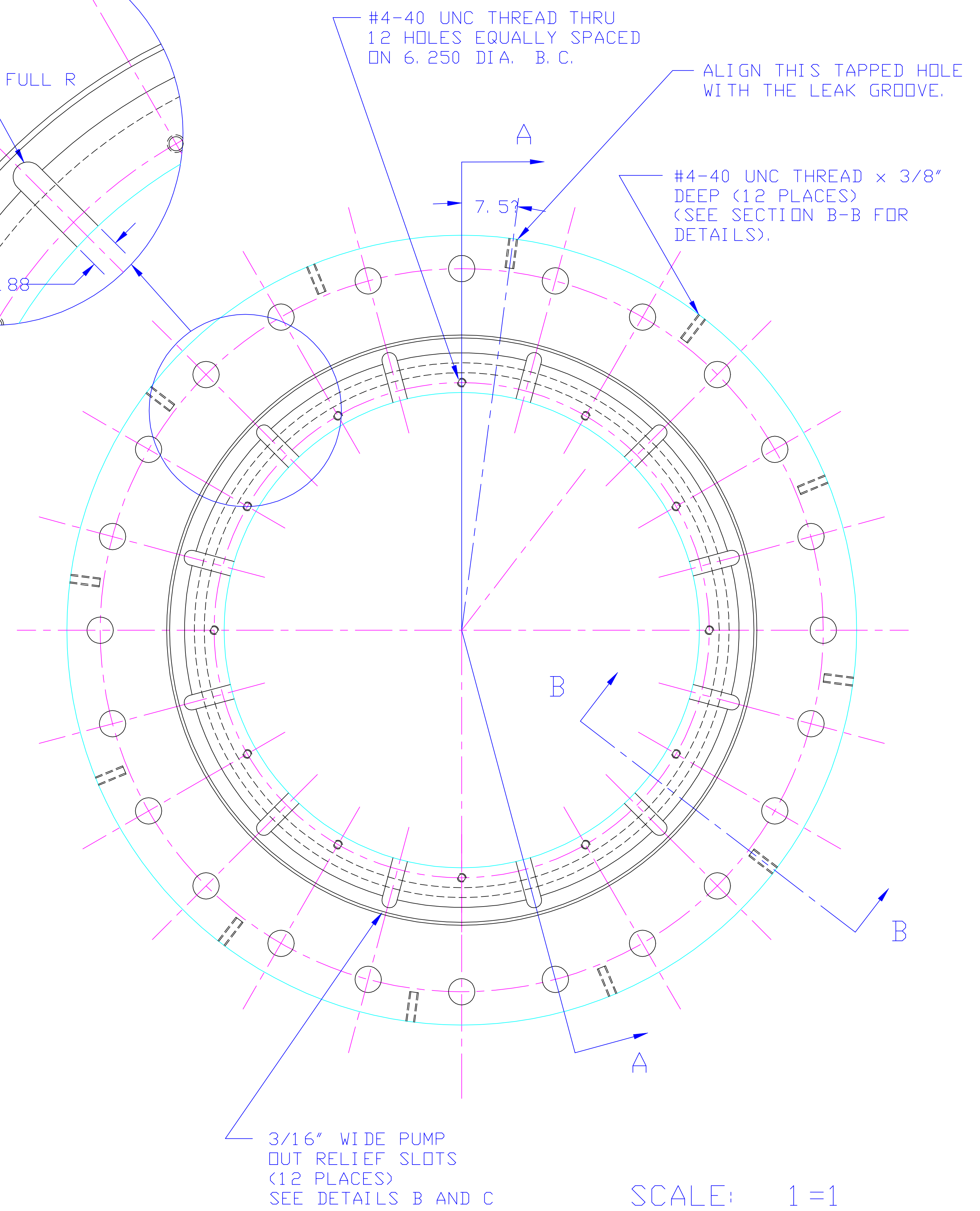
SECT. A-A DETAILS
(SCALE: 2:1)



SECT. A-A



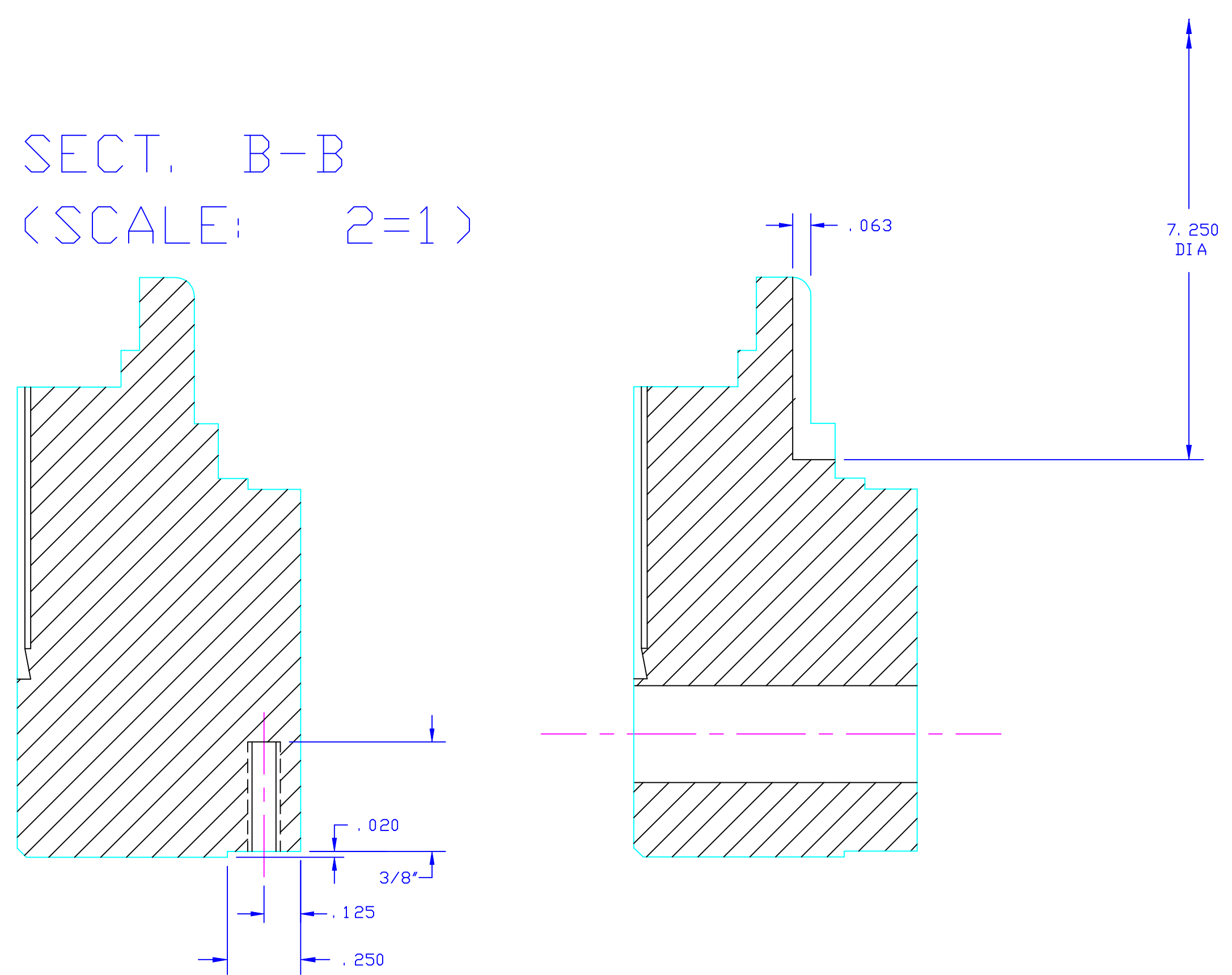
DETAIL C
(SCALE 2:1)



3/16" WIDE PUMP
OUT RELIEF SLOTS
(12 PLACES)
SEE DETAILS B AND C

SCALE: 1=1

SECT. B-B
(SCALE: 2=1)



NOTES

- CONSTRUCT FROM MDC #F1000000
10" NON-ROTATABLE CONFLAT FLANGE (OR EQUIV.)
- ALL MACHINING TO BE DONE WITH SULFUR-FREE OIL.

DRAWN BY URIBE	NUCLEAR PHYSICS LABORATORY UNIVERSITY OF ILLINOIS AT URBANA-CHAMPAIGN	CONFLAT FLANGE FOR CERAMIC BUSHING		
CHECKED BY	UNLESS OTHERWISE SPECIFIED	PART NO.	SCALE 1=1	FILE 12
APPROVED BY	DIMENSIONS IN INCHES 2 PLACE DEC. ± .01 BREAK SHARP CORNERS 3 PLACES DEC. ± .003 FRACTIONAL=1/32" ANGULAR=0°-30°	NO. REQ'D.	DATE 7-10-88	DWG. NO. D-2709-39
		CHASSIS NO. OR MATERIAL LISTED		