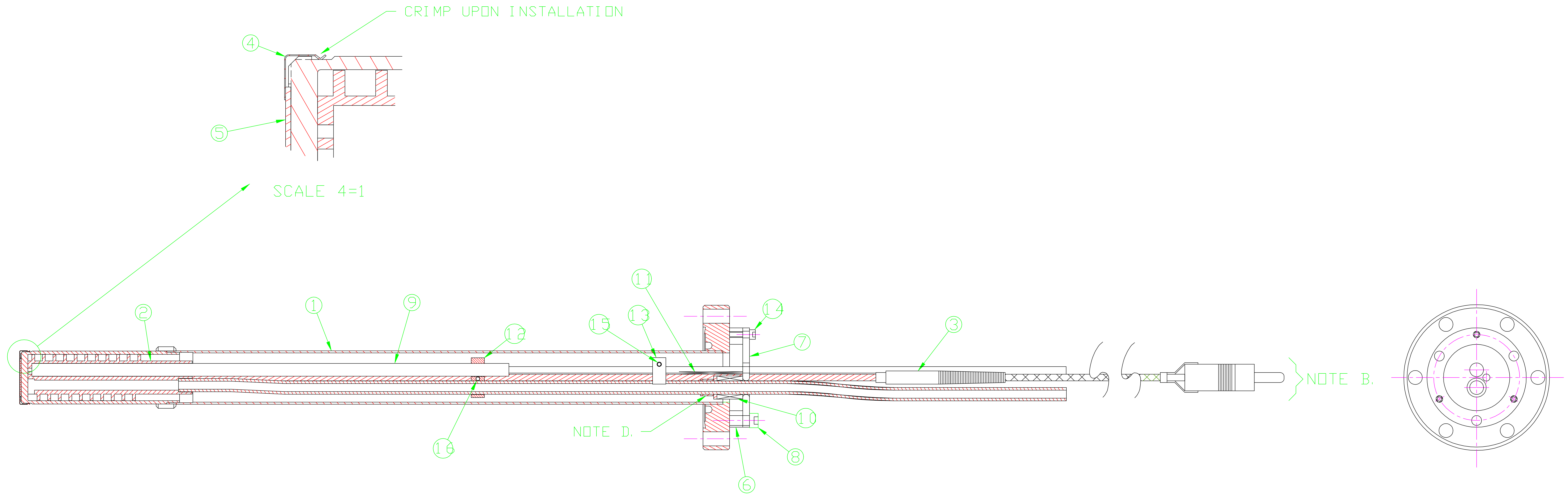


REV.	DATE	DESCRIPTION	BY	APP'D
1	10/88	ADDED PARTS 15 AND 16; SPRING DRAWINGS	URIBE	
2	5-91	ADDED GALLIUM ARSENIDE WAFER IN ASSEM.	URIBE	



NOTES:

- A. CUT SPRING LENGTH TO APPLY 5±1 POUNDS PRESSURE WHEN ASSEMBLED AS SHOWN.
- B. TERMINATE ELECTRICAL & PIPING CONNECTIONS AS PER I&C AND CRYOGENIC REQUIREMENTS.
- C. "FIREROD" CARTRIDGE HEATER TO BE ORDERED FROM THE SUPPLIER WITH A 6" UNHEATED EXTENSION AND A 33" LONG SOLID NICKEL LEADS WITH CERAMIC BEAD INSULATION. IT IS TO BE CENTERLESS GROUND TO .2410±.0005 DIA
- D. NOTCH AT ASSEMBLY TO CLEAR THERMOCOUPLE
- E. SCREWS ARE TO BE SILVER PLATED .0002 THK
- F. SCREWS ARE TO BE COATED WITH BAKED-ON MoS₂

SLAC: SA795-649-65 MODIFIED

NOTE E	16	SCREW-SS RD HD 2-56 X 5/8 LG	1	
	15	SCREW-SS RD HD 2-56 X 1/4 LG	1	
NOTE F.	14	SCREW-SOC HD, SS, 4-40x1/4 LG	3	
	13	C-2709-41 THERMOCOUPLE SPRING CLAMP	1	
NOTE A.	12	C-2709-70 STALK HEATER CLAMP	1	
	11	THERMOCOUPLE SPRING-SEE ① ON C-2709-60	1	
NOTE C.	10	STALK HEATER SPRING-SEE ② C-2709-60	1	
	9	E3A51 WATLOW, "FIREROD", HEATER	1	
NOTE E.	8	SCREW-SOC HD, SS, 8-32X5/8 LG	3	
	7	C-2709-27 COVER PLATE	1	
	6	C-2709-28 SPACER	1	
	5	C-2709-10 GALLIUM ARSENIDE WAFER	1	
	4	C-2709-8 TANTALUM CUP	1	
	3	C-2709-71 STALK THERMOCOUPLE	1	
	2	C-2709-4 EMITTER PLUG ASS'Y	1	
	1	C-2709-3 EMITTER CASE WELDMENT	1	
	ITEM	PART NO.	DESCRIPTION	QTY.
DRAWN BY	NUCLEAR PHYSICS LABORATORY		EMITTER ASSEMBLY	
CHECKED BY	UNIVERSITY OF ILLINOIS AT URBANA-CHAMPAIGN		PART NO.	FILE
	UNLESS OTHERWISE SPECIFIED		SCALE	12
	DIMENSIONS IN INCHES	2 PLACE DEC. ± .01	NO. REQ'D.	
	BREAK SHARP CORNERS	3 PLACES DEC. ± .003	DATE	DWG. NO.
	FRACTIONAL=1/32"	ANGULAR=0°-30'	7-26-88	D-2709-5
APPROVED BY		LISTED		