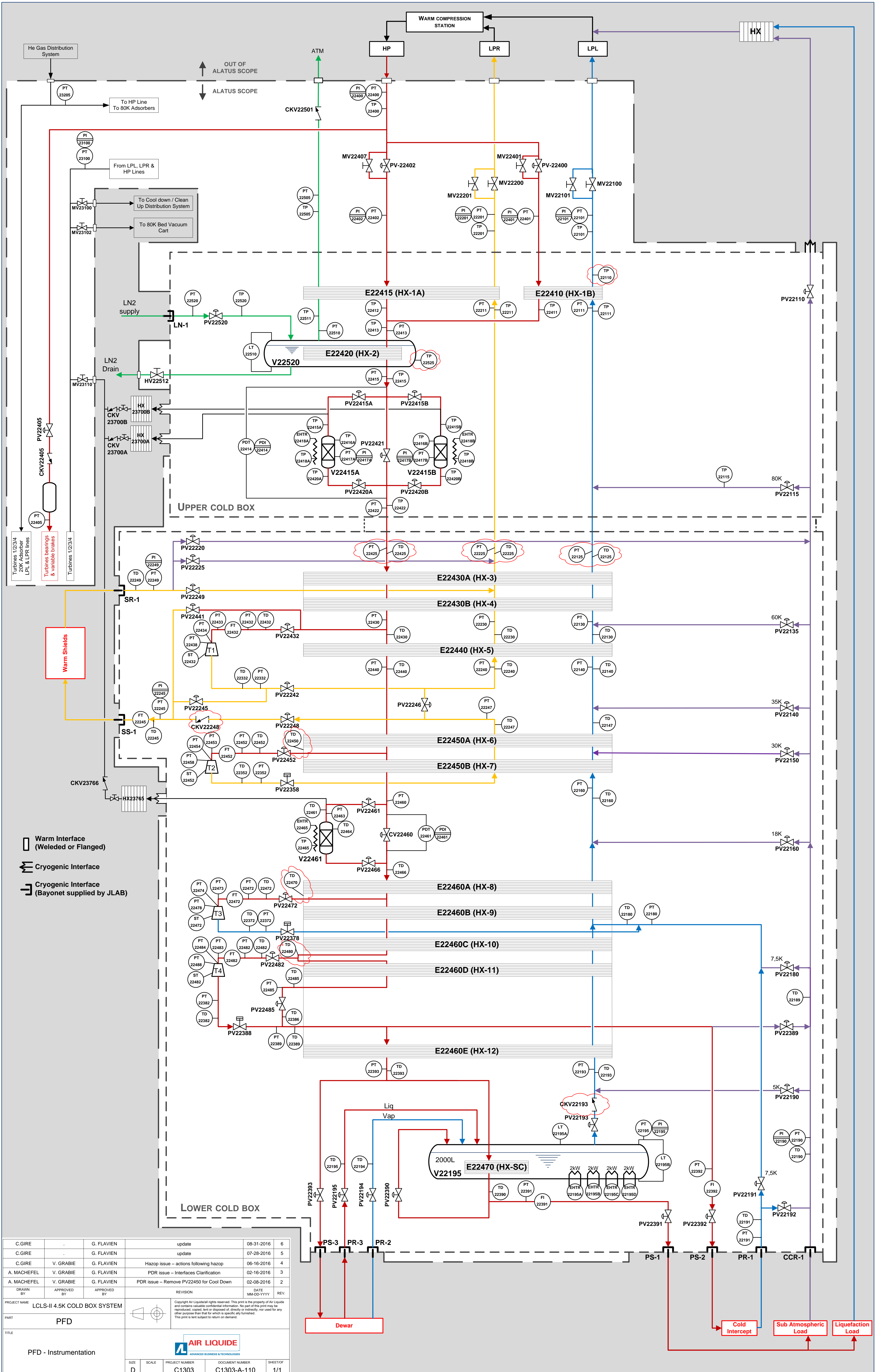


Process Flow Diagram (PFD) - Instrumentation

<p>Written by Project Engineer: Clement Gire clement.gire@airliquide.com</p>	<p><u>Distribution :</u> JLAB ALATUS project team</p>
<p>Approved by Technical Manager: Gilles Flavien gilles.flavien@airliquide.com</p>	

MODIFICATIONS RECORDING

ISSUE OF/MODIF	DATE	WRITTEN BY	CHECKED BY	EVOLUTION OF THE DOCUMENT (Updated pages)	JUSTIFICATION OF THE MODIFICATION
(0)	10-12-15	A. Machefel	G. Flavien	Initial Issue (KOM)	
(1)	01-22-16	A. Machefel	G. Flavien	PDR Issue	
(2)	02-08-16	A. Machefel	G. Flavien	PDR Issue	Remove PV22450 for Cool Down
(3)	02-16-16	A. Machefel	G. Flavien	PDR Issue	Interfaces Clarification
(4)	06-16-16	C. Gire	G. Flavien	HAZOP Issue	Actions following HAZOP
(5)	07-28-16	C. Gire	G. Flavien	Update	
(6)	08-31-16	C. Gire	G. Flavien	Update	



C.GIRE	G. FLAVIEN	update	08-31-2016	6
C.GIRE	G. FLAVIEN	update	07-28-2016	5
C.GIRE	V. GRABIE	Hazop issue – actions following hazop	06-16-2016	4
A. MACHEFEL	V. GRABIE	PDR issue – Interfaces Clarification	02-16-2016	3
A. MACHEFEL	V. GRABIE	PDR issue – Remove PV22450 for Cool Down	02-08-2016	2
DRAWN BY		APPROVED BY	DATE	REVISION
PROJECT NAME		LCLS-II 4.5K COLD BOX SYSTEM		
PART		PFD		
TITLE		PFD - Instrumentation		
SIZE	SCALE	PROJECT NUMBER	DOCUMENT NUMBER	SHEET OF
D		C1303	C1303-A-110	1/1

Copyright Air Liquide rights reserved. This print is the property of Air Liquide and contains valuable confidential information. No part of this print may be reproduced, copied, lent or disposed of, directly or indirectly, nor used for any other purpose than that for which it is specifically intended. This print is lent subject to return on demand.

ADVANCED BUSINESS & TECHNOLOGIES