

**UCB 80K Adsorber Heater A Terminal
Enclosure (CXU-TB1)
(15-5032-1411 B)**

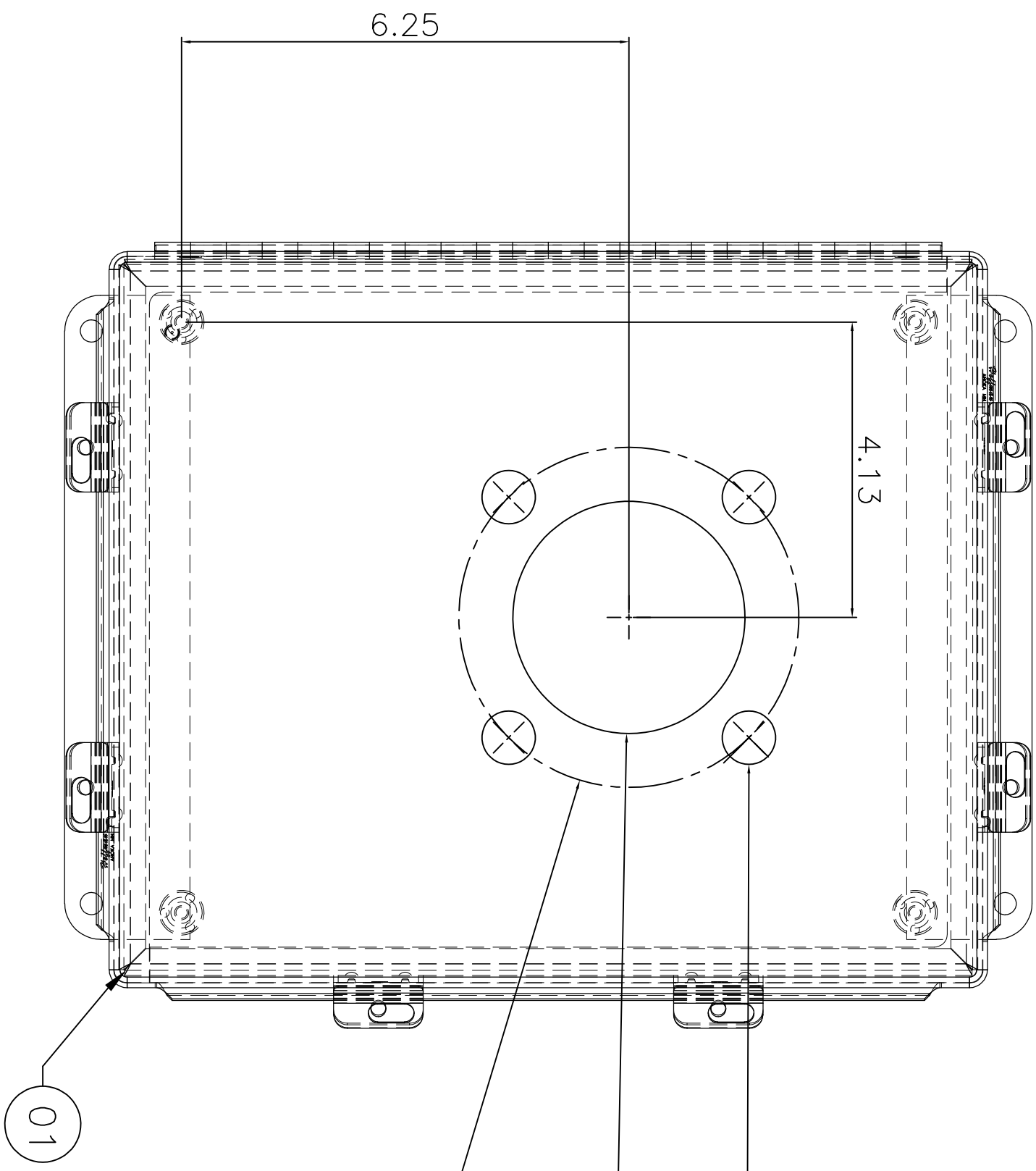
<p>Written by: Cold Box Manufacturer: PHPK</p>	<p><u>Distribution :</u> JLAB AL project team</p>
<p>Reviewed by Technical Manager: Gilles Flavien gilles.flavien@airliquide.com</p>	

MODIFICATIONS RECORDING

ISSUE OF MODIF	DATE	WRITTEN BY	CHECKED BY	EVOLUTION OF THE DOCUMENT (Updated pages)	JUSTIFICATION OF THE MODIFICATION
<p>Note: Recording of modifications are included in document</p>					

REVISIONS

CHG.	DATE	DWN.	CH'KD.	ENGR.	REV'D	DESCRIPTION
-	-	-	-	-	-	-



Ø0.75 DRILL THROUGH 4X
EVENLY SPACED

Ø3.25 DRILL THROUGH

Ø4.75
HOLE CENTERLINE

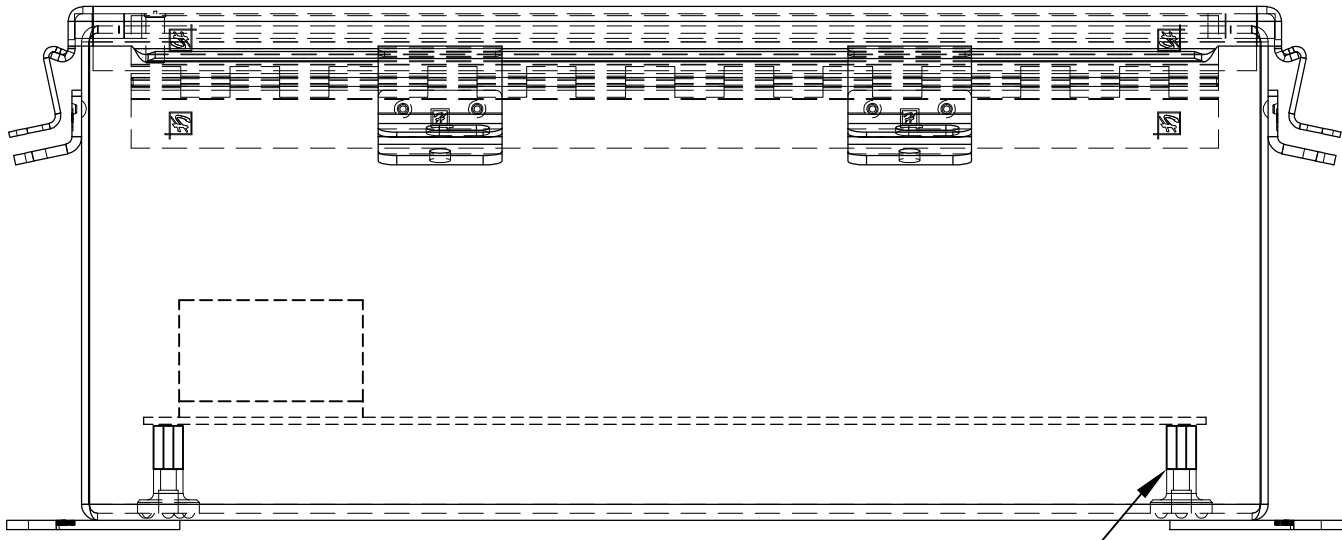
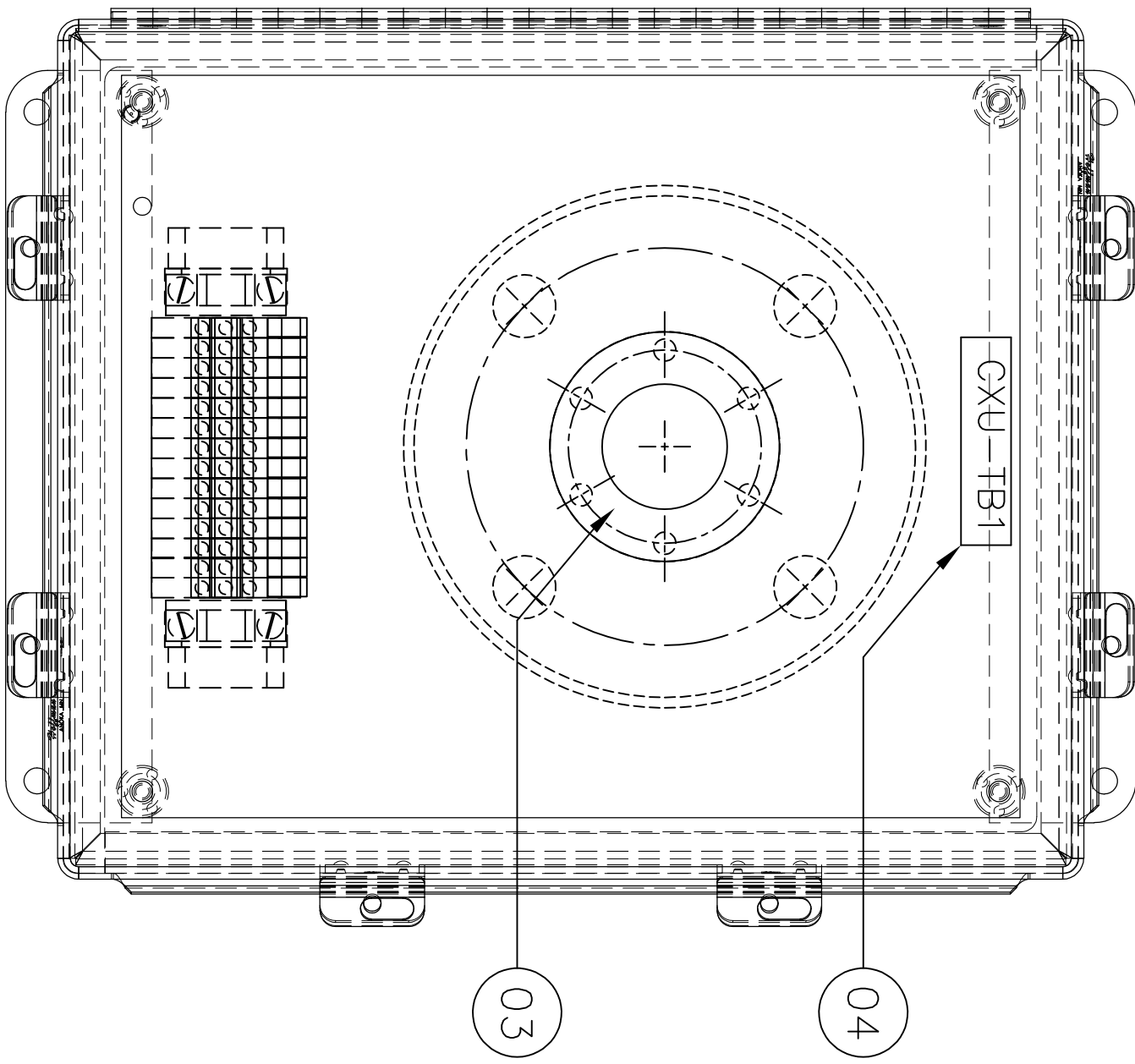
ENCLOSURE DRILL DIAGRAM (BACK OF
ENCLOSURE ONLY, DOOR NOT SHOWN)

INFORMATION SHOWN ON THIS
DRAWING IS PROPRIETARY AND
THE SOLE PROPERTY OF PHPK
AND IS NOT TO BE DISCLOSED
OR TRANSMITTED TO UNAUTHOR-
IZED PARTIES.

REL. DATE	8/30/2016	SIZE	B	CHG.	B
REVIEWED	SPW	ANGULAR			
ENGINEER	MJA	.XXX			
CHECKED	SPW	FRACTION			
DRAWN	MJA	TOLERANCES			
WEIGHT					
. LBS					
CONTRACT NO.		PART NUMBER		NO. REC'D	
DRAWING NO.		2111 BUILDERS PLACE COLUMBUS, OHIO 43204		NEXT ASSEMBLY	
TITLE		LCS II		SIZE	
CXU-TB1 UPPER COLD BOX TERMINAL BOX 1		DRAWING NO.		15-5032-1411	
SCALE		NONE		SHEET 2 OF 4	

REVISIONS

CHG.	DATE	DWN.	CH'KD.	ENGR.	REV'D	DESCRIPTION
-	-	-	-	-	-	-



08 4 PLACES

FINAL ASSEMBLY FEEDTHROUGH SHOWN
FOR REFERENCE ONLY

INFORMATION SHOWN ON THIS DRAWING IS PROPRIETARY AND THE SOLE PROPERTY OF PHPK AND IS NOT TO BE DISCLOSED OR TRANSMITTED TO UNAUTHORIZED PARTIES.

. LBS	WORK ORDER	CONTRACT NO.	2	PART NUMBER	NO. REV'D	NEXT ASSEMBLY	SIZE
WEIGHT	MJA						
DRAWN	SPW	FRACTION					
CHECKED	MJA	.XX					
ENGINEER	SPW	.XXX					
REVIEWED	ANGULAR						
REL. DATE	8/30/2016						
DIMENSIONS ARE PROVIDED PRIOR TO SURFACE TREATMENTS UNLESS NOTED.							
PHPK TECHNOLOGIES 2111 BUILDERS PLACE COLUMBUS, OHIO 43204 LCIS II				TITLE CXU-TB1 UPPER COLD BOX TERMINAL BOX 1			
SIZE	DRAWING NO.	15-5032-1411	CHG.				
B			B				
SCALE	NONE	SHEET 3 OF 4					

REVISIONS

CHG.	DATE	DWN.	CH'KD.	ENGR.	REV'D	DESCRIPTION
-	-	-	-	-	-	

NO. REC'D.	ITEM	DESCRIPTION	NOTE
-1	01	COM'L ELECTRICAL ENCLOSURE - "HOFFMAN", A1210GHNF	
1	02	COM'L BACKPANEL - "HOFFMAN", A12P10	
1	03	COM'L FEEDTHROUGH, DOUGLAS, 14 WIRE, TEFLON, 12 AWG 2.75" CONFLAT FLANGE (PHPK SUPPLIED)	PHPK SUPPLY, LENGTH TBD
1	04	COM'L PLASTIC BLACK ON WHITE TAGS SIZED TO FIT, ENGRAVED AS SHOWN	
12	05	COM'L TERMINAL, RED, 1 CIRCUIT "ALLEN BRADLEY" # 1492-J4-RE	
2	06	COM'L TERMINAL, RED, 1 CIRCUIT "ALLEN BRADLEY" # 1492-J4-RE	
2	07	COM'L ANCHORS "ALLEN BRADLEY" # 1492-EAH35	
4	08	COM'L THREADED STANDOFF, MCMASTER CARR 92700A018	
2	09	COM'L TERMINAL, GROUNDING, "ALLEN BRADLEY" # 1492-WG4	
2	10	COM'L PARTITIAN PLATE, "ALLEN BRADLEY" # 1492-PPM3	
	11		
	12		
	13		
	14		
	15		
	16		
	17		
	18		
	19		
	20		
	21		
	22		
	23		
	24		
	25		

BILL OF MATERIAL

NOTES:

- TAGS ITEM #4 ENGRAVED:
 "C1U-TB1"
 "C2U-TB1"

INFORMATION SHOWN ON THIS DRAWING IS PROPRIETARY AND THE SOLE PROPERTY OF PHPK AND IS NOT TO BE DISCLOSED OR TRANSMITTED TO UNAUTHORIZED PARTIES.

REL. DATE	8/30/2016	WORK ORDER	MJA	CONTRACT NO.		PART NUMBER		NO. REC'D	2	NEXT ASSEMBLY		SIZE	
DRAWN		ENGINEER	MJA	TOLERANCES		TITLE	PHPK TECHNOLOGIES 2111 BUILDERS PLACE COLUMBUS, OHIO 43204 LCIS II CXU-TB1 UPPER COLD BOX TERMINAL BOX 1						
CHECKED		ENGINEER	MJA	FRACTION	.XX	SIZE	B	DRAWING NO.	15-5032-1411	CHG.	B	SCALE	NONE
REVIEWED		SPW	ANGULAR			REL. DATE	8/30/2016	DIMENSIONS ARE PROVIDED PRIOR TO SURFACE TREATMENTS UNLESS NOTED.		SHEET	4	OF	4