



Jefferson Lab Alignment Group

Data Transmittal

TO: M.FOWLER, S.LASSITER

DATE: 06 Mar 2015

FROM: Steve Hardisty

Checked:

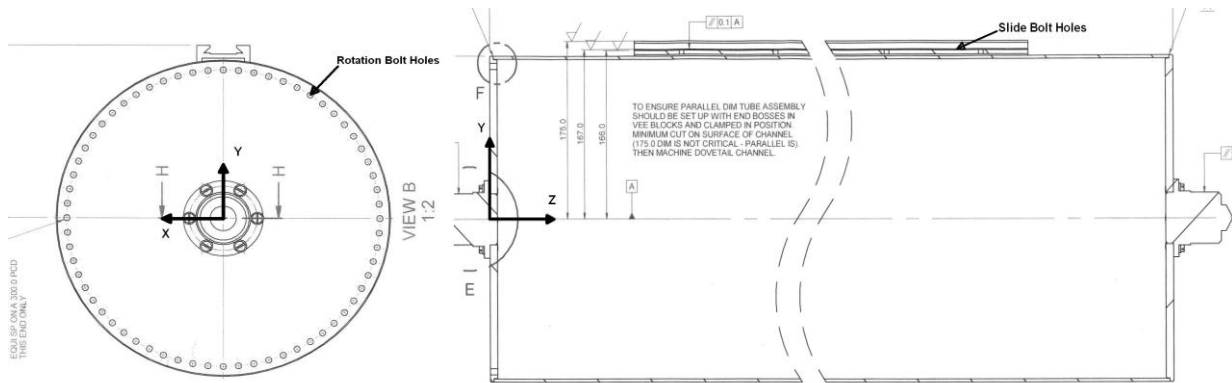
: C1607

DETAILS:

M:\align\DATA\Fiduc\HallC\MAPPER\150310A

Attached are the results from the Hall C Mapper QC survey on 03/05/2015.

The coordinate system was established by constructing a line through the upstream and downstream bosses to define the Z axis. The orientation is such that the probe rack is at 12 o'clock. Values are in millimeters, angles are counterclockwise looking downstream.



ROTATION BOLT HOLES					SLIDE BOLT HOLES				SLIDE FIXTURE		
Name	X	Y	Z	Ang.°	Name	X	Y	Z	Name	X	Y
FUH1	-147.19	29.02	-0.17	281.15	SLIDEH1	-0.02	166.00	204.33	SLIDEF1	-0.12	187.37
FUH2	-143.68	43.25	-0.13	286.75	SLIDEH2	-0.01	166.13	304.35	SLIDEF2	-0.08	187.45
FUH3	-138.75	57.15	-0.10	292.39	SLIDEH3	-0.02	166.25	404.34	SLIDEF3	-0.09	187.56
FUH4	-132.46	70.40	-0.06	297.99	SLIDEH4	0.00	166.32	454.34	SLIDEF4	-0.08	187.62
FUH5	-124.93	83.08	-0.02	303.62	SLIDEH5	0.02	166.36	504.34	SLIDEF5	-0.07	187.69
FUH6	-116.14	94.86	0.02	309.24	SLIDEH6	0.00	166.38	554.35	SLIDEF6	-0.07	187.74
FUH7	-106.28	105.79	0.05	314.87	SLIDEH7	0.05	166.45	604.34	SLIDEF7	-0.06	187.79
FUH8	-95.37	115.68	0.09	320.50	SLIDEH8	0.04	166.52	654.33	SLIDEF8	-0.03	187.87
FUH9	-83.56	124.44	0.13	326.12	SLIDEH9	0.04	166.60	704.34	SLIDEF9	-0.03	187.92
FUH10	-70.88	132.07	0.16	331.78	SLIDEH10	0.05	166.67	754.36	SLIDEF10	-0.05	188.00
FUH11	-57.61	138.40	0.20	337.40	SLIDEH11	0.05	166.73	804.37	SLIDEF11	-0.02	188.08
FUH12	-43.79	143.30	0.23	343.01	SLIDEH12	0.04	166.78	854.37	SLIDEF12	0.01	188.14
FUH13	-29.43	147.01	0.26	348.68	SLIDEH13	0.04	166.82	904.37	SLIDEF13	-0.02	188.16
FUH14	-14.95	149.10	0.29	354.28	SLIDEH14	0.03	166.85	954.36	SLIDEF14	-0.03	188.19
FUH15	-0.18	149.92	0.31	359.93	SLIDEH15	0.05	166.90	1004.37	SLIDEF15	-0.04	188.24
FUH16	14.54	149.20	0.33	5.57	SLIDEH16	0.02	167.02	1129.36	SLIDEF16	-0.04	188.37

ROTATION BOLT HOLES					SLIDE BOLT HOLES				SLIDE FIXTURE			
Name	X	Y	Z	Ang.°	Name	X	Y	Z	Name	X	Y	
FUH17	29.05	147.01	0.35	11.18	SLIDEH17	0.05	167.10	1254.39	SLIDEF17	-0.03	188.48	
FUH18	43.25	143.43	0.37	16.78	SLIDEH18	0.07	167.14	1379.41	SLIDEF18	0.00	188.51	
FUH19	57.26	138.55	0.38	22.46	SLIDEH19	0.08	167.19	1504.42	SLIDEF19	0.08	188.61	
FUH20	70.51	132.22	0.39	28.07	SLIDEH20	0.09	167.18	1629.43	SLIDEF20	0.02	188.55	
FUH21	83.15	124.70	0.39	33.69	SLIDEH21	0.06	167.17	1754.46	SLIDEF21	0.02	188.52	
FUH22	94.95	115.88	0.39	39.33	SLIDEH22	0.07	167.12	1879.47	SLIDEF22	0.03	188.51	
FUH23	105.88	106.07	0.39	44.95	SLIDEH23	0.12	167.05	2004.48	SLIDEF23	0.07	188.42	
FUH24	115.83	95.15	0.38	50.60	SLIDEH24	0.08	167.02	2054.48	SLIDEF24	0.06	188.38	
FUH25	124.60	83.35	0.37	56.22	SLIDEH25	0.10	166.97	2104.47	SLIDEF25	0.05	188.34	
FUH26	132.21	70.74	0.35	61.85	SLIDEH26	0.09	166.94	2154.49	SLIDEF26	0.07	188.30	
FUH27	138.50	57.42	0.34	67.48	SLIDEH27	0.08	166.89	2204.47	SLIDEF27	0.05	188.26	
FUH28	143.49	43.55	0.32	73.11	SLIDEH28	0.08	166.85	2254.48	SLIDEF28	0.04	188.24	
FUH29	147.06	29.28	0.29	78.74	SLIDEH29	0.08	166.79	2304.51	SLIDEF29	0.08	188.18	
FUH30	149.22	14.71	0.26	84.37	SLIDEH30	0.10	166.73	2354.49	SLIDEF30	0.11	188.13	
FUH31	149.97	-0.01	0.23	90.00	SLIDEH31	0.08	166.68	2404.50	SLIDEF31	0.07	188.05	
FUH32	149.27	-14.73	0.20	95.64	SLIDEH32	0.06	166.65	2454.51	SLIDEF32	0.09	188.00	
FUH33	147.12	-29.26	0.17	101.25	SLIDEH33	0.09	166.59	2504.50	SLIDEF33	0.05	187.95	
FUH34	143.60	-43.59	0.13	106.89	SLIDEH34	0.09	166.56	2554.50	SLIDEF34	0.05	187.92	
FUH35	138.62	-57.44	0.10	112.51	SLIDEH35	0.10	166.51	2604.49	SLIDEF35	0.03	187.89	
FUH36	132.32	-70.71	0.06	118.12	SLIDEH36	0.06	166.40	2704.49	SLIDEF36	-0.02	187.77	
FUH37	124.79	-83.43	0.02	123.76	SLIDEH37	0.11	166.29	2804.52	SLIDEF37	0.00	187.67	
FUH38	116.06	-95.26	-0.02	129.38								
FUH39	106.15	-106.18	-0.06	135.01								
FUH40	95.27	-116.06	-0.09	140.62								
FUH41	83.42	-124.96	-0.13	146.27								
FUH42	70.83	-132.50	-0.17	151.87								
FUH43	57.52	-138.77	-0.20	157.48								
FUH44	43.65	-143.74	-0.23	163.11								
FUH45	29.36	-147.31	-0.26	168.73								
FUH46	14.83	-149.50	-0.29	174.34								
FUH47	0.10	-150.27	-0.31	179.96								
FUH48	-14.56	-149.49	-0.33	185.56								
FUH49	-29.19	-147.45	-0.35	191.20								
					ROTATION BOLT HOLES							
FUH50	-43.48	-143.84	-0.37	196.82	Name	X	Y	Z	Ang.°			
FUH51	-57.29	-138.86	-0.38	202.42	FUH58	-132.29	-71.06	-0.36	241.76			
FUH52	-70.63	-132.58	-0.39	208.04	FUH59	-138.61	-57.72	-0.34	247.39			
FUH53	-83.32	-125.02	-0.39	213.68	FUH60	-143.62	-43.88	-0.32	253.01			
FUH54	-95.11	-116.29	-0.39	219.28	FUH61	-147.21	-29.65	-0.29	258.61			
FUH55	-105.98	-106.43	-0.39	224.88	FUH62	-149.35	-15.05	-0.27	264.25			
FUH56	-115.97	-95.53	-0.38	230.52	FUH63	-150.09	-0.39	-0.24	269.85			
FUH57	-124.72	-83.71	-0.37	236.13	FUH64	-149.38	14.36	-0.20	275.49			

