



Jefferson Lab Alignment Group

Data Transmittal

TO: S. Lassiter

DATE: 28 Jun 2021

FROM: Steve Hardisty

Checked: rtm

: C1996

DETAILS:

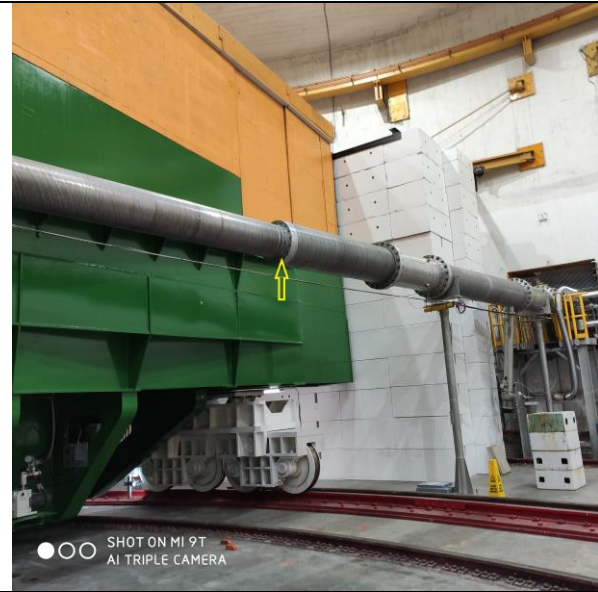
Data: Data\Step2A\HALLC\BEAMPIPE\210624A

The following are the results of the as found survey of the downstream beam pipe. The locations are off the ideal Hall C Target location, with + x being beam left and + y being up from the beam line. The results are in millimeters.

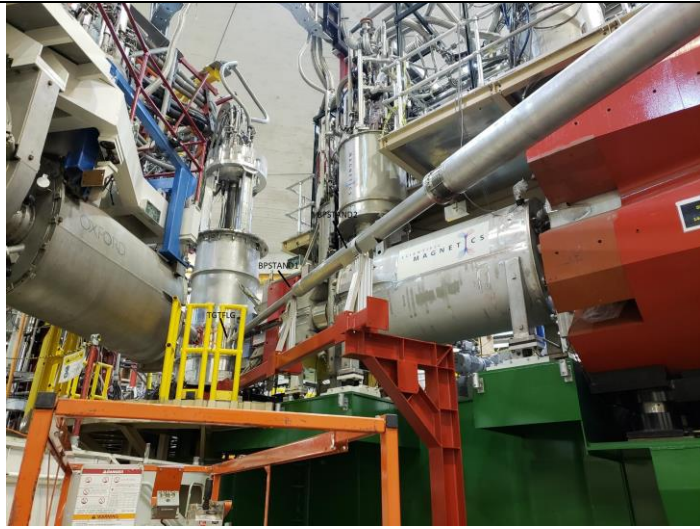
Location From Target CL	ASFOUND	X	Y	PIPE DIAMETER
0.729		-5.5	-2.8	70
2.495		-11.7	-1.3	51
4.693		-19.5	-3.8	127
7.954		-32.4	-3	127
8.807		-36	0.2	273
10.811		-28.1	1.2	273
12.612		-23.3	6.6	325
16.437		10.9	-5.4	461

Beam pipe as-founds from Feb. 04, 2019

Location From Target CL	ASFOUND	X	Y	PIPE DIAMETER
TGTFLG 0.703		-0.76	2.01	70
BPStand1 2.627		-12.15	13.21	101
BPstand2 4.043		-16.1	17.45	169
BPstand3 8.595		-4.84	7.06	273
GateValve 10.827		0.51	3.73	457



Photos from 6/24/2021



Photos from 2/04/2019

Additional Beam Line Surveys

M:\align\DATA\Step2B\HALLC\BeamPipe\170209A				
2/9/17	Values in millimeters			
LOCATION	X	Y	Z	DIAMETER
TGT FLG	0.8	-3.7	716.3	69.4
BP US	-4.8	-1.7	5773.9	272.8
BP MID	-2.7	-3.8	8642.1	272.4
GV	0.0	0.6	10863.1	457.5

M:\align\DATA\Step2B\HALLC\BeamPipe\180817A				
8/17/18	Values in millimeters			
LOCATION	X	Y	Z	DIAMETER
DSTARCANBPFLNG	-0.3	-0.3	721.1	69.9
BPSTN1	1.6	2.0	2538.2	50.7
BPSTN2	1.1	3.7	4003.6	74.1
BPSTN3	-2.6	3.2	8692.8	273.1
BPDSBELSTN3	-2.9	2.9	8836.5	273.1
BPSTN4	-0.1	2.8	10840.3	457.1

*****Note: Values given are to the measurement location. Pipe lengths should not be inferred.