

A Prototype of a Beam Steering Assistant GUI Tool for Accelerator Operations

Pavel Chevtsov and Matt Bickley



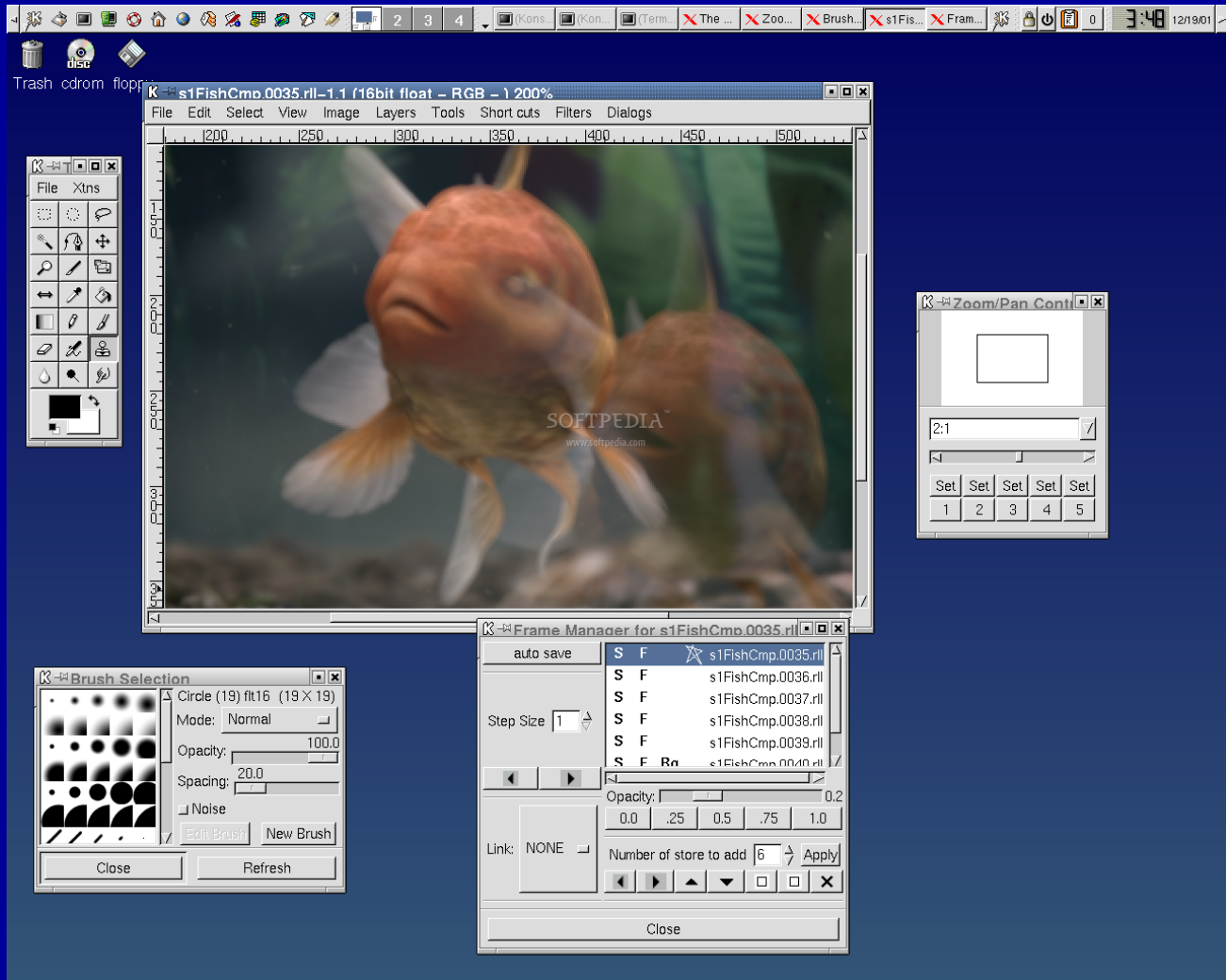
PCaPAC-2006







File
(Beam Steering
Template)

























PCaPAC-2006

Accelerator Control
System

New Drawing Tool

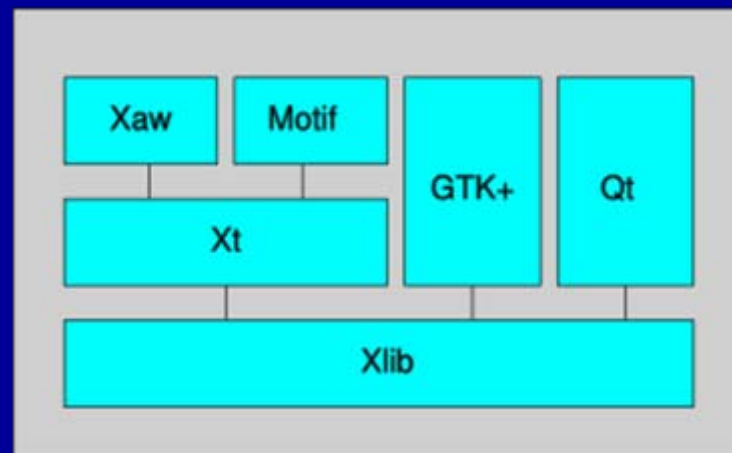


PCaPAC-2006

Beam Steering Assistant Tool



PCaPAC-2006



Beam Steering Template
Designer Application

Beam Steering
Assistant Application

Beam Steering Assistant Tool

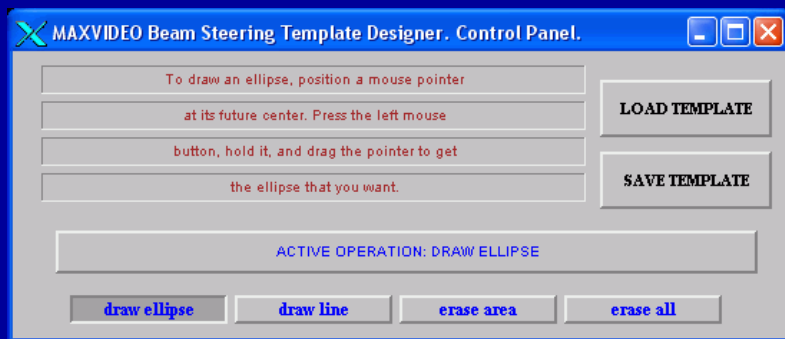
Beam Steering Template Designer

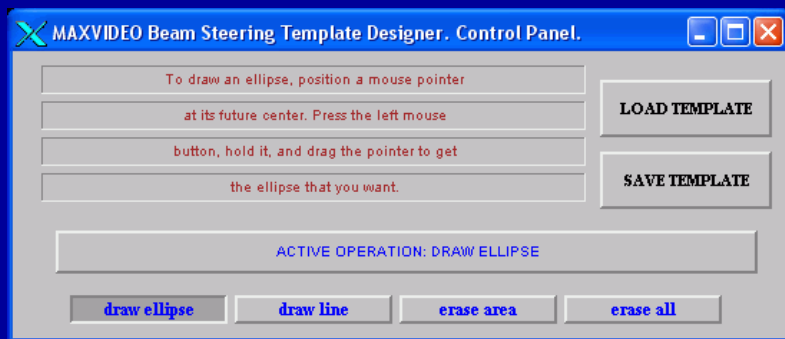


PCaPAC-2006

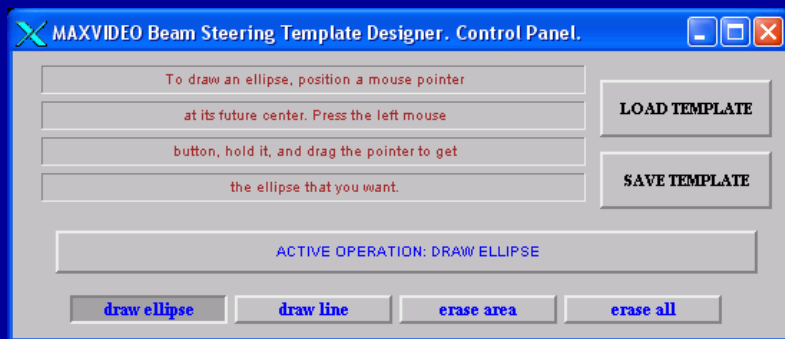


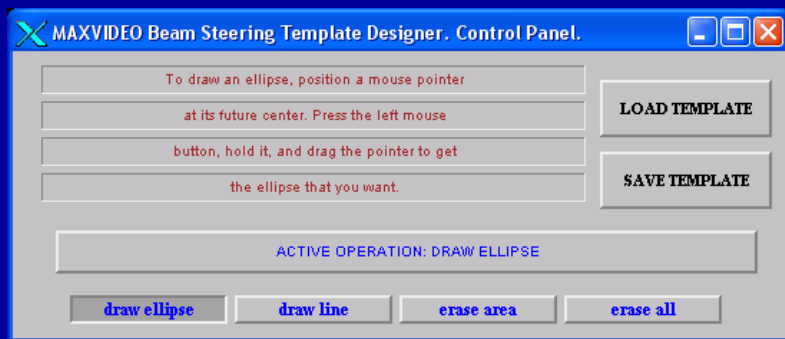
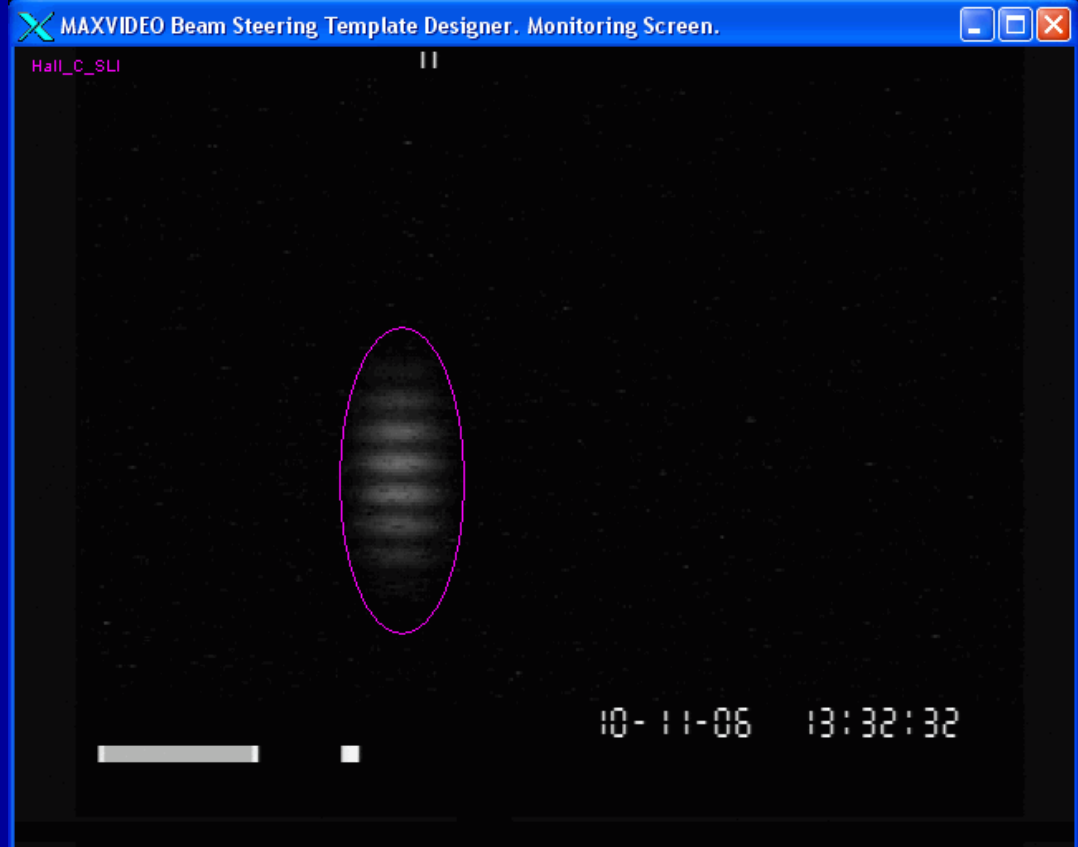
PCaPAC-2006

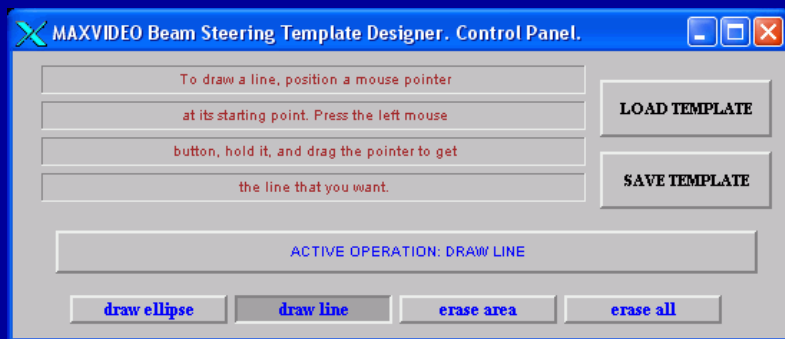
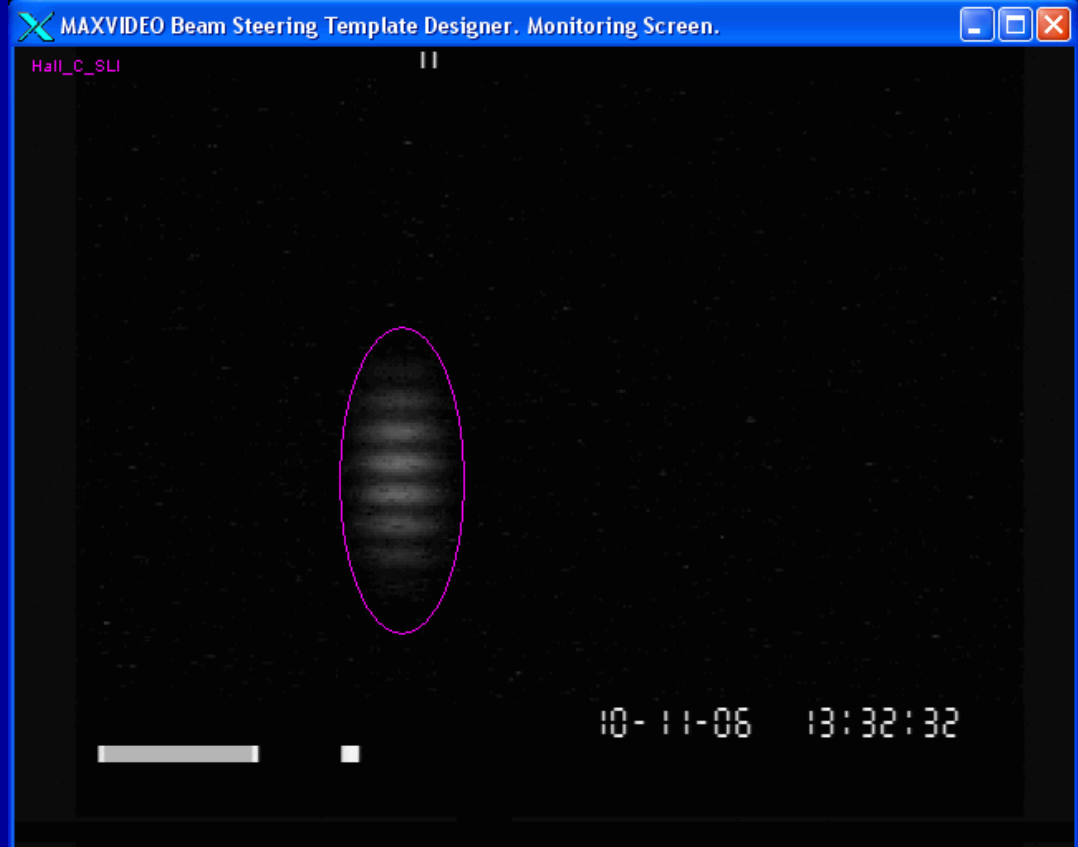


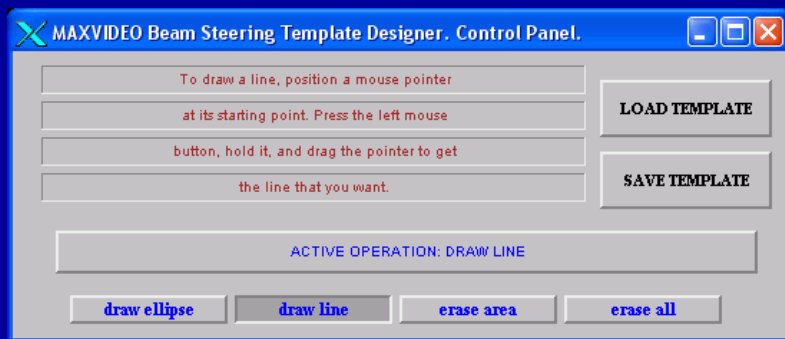


PCaPAC-2006



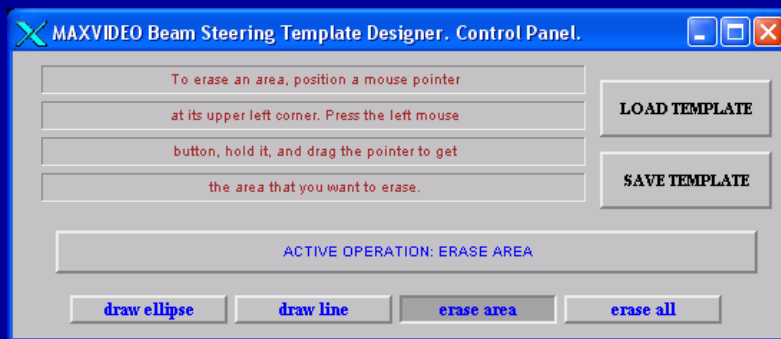






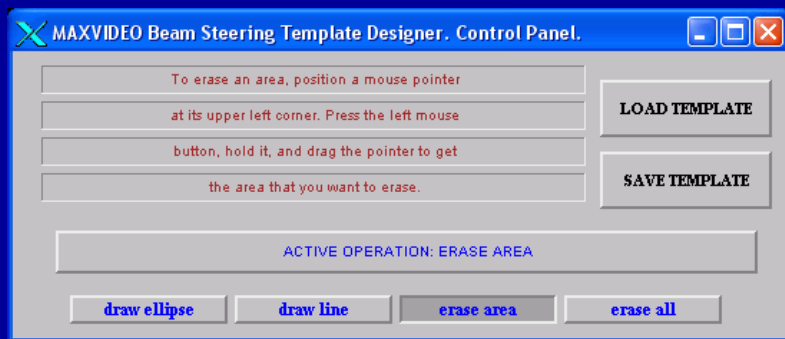


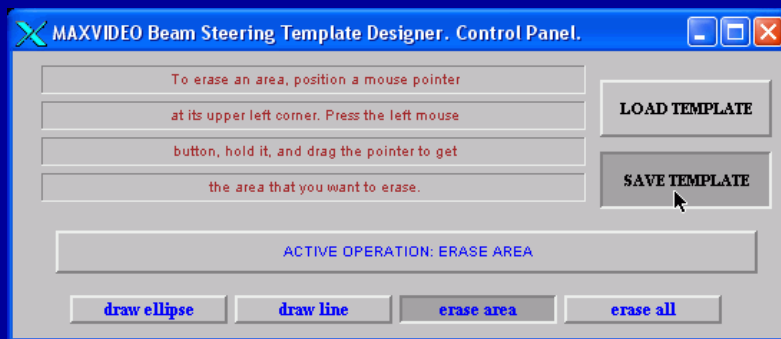
PCaPAC-2006



PCaPAC-2006









PCaPAC-2006

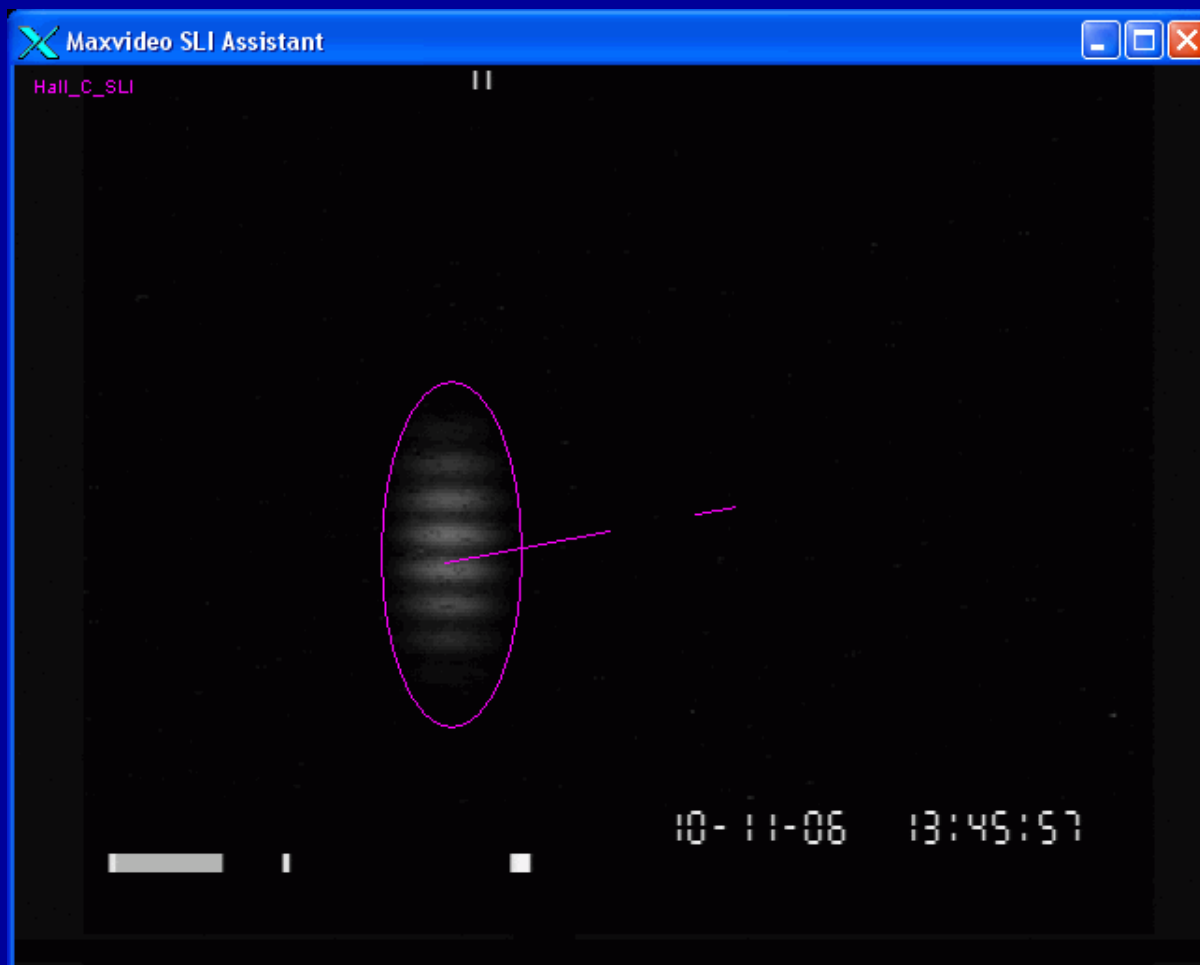


PCaPAC-2006

Beam Steering Assistant Application



PCaPAC-2006



Conclusion

A prototype of a Beam Steering Assistant tool created at Jefferson Lab is an example of implementing some “non-typical” functions in control and data processing systems.

The tool, which looks like a simple computer entertaining program allowing users to draw various graphical objects over live TV images, can have a very positive impact on accelerator operations. In particular, it can help simplify accelerator setup procedures and make them reproducible.





PCaPAC-2006

E N D



PCaPAC-2006