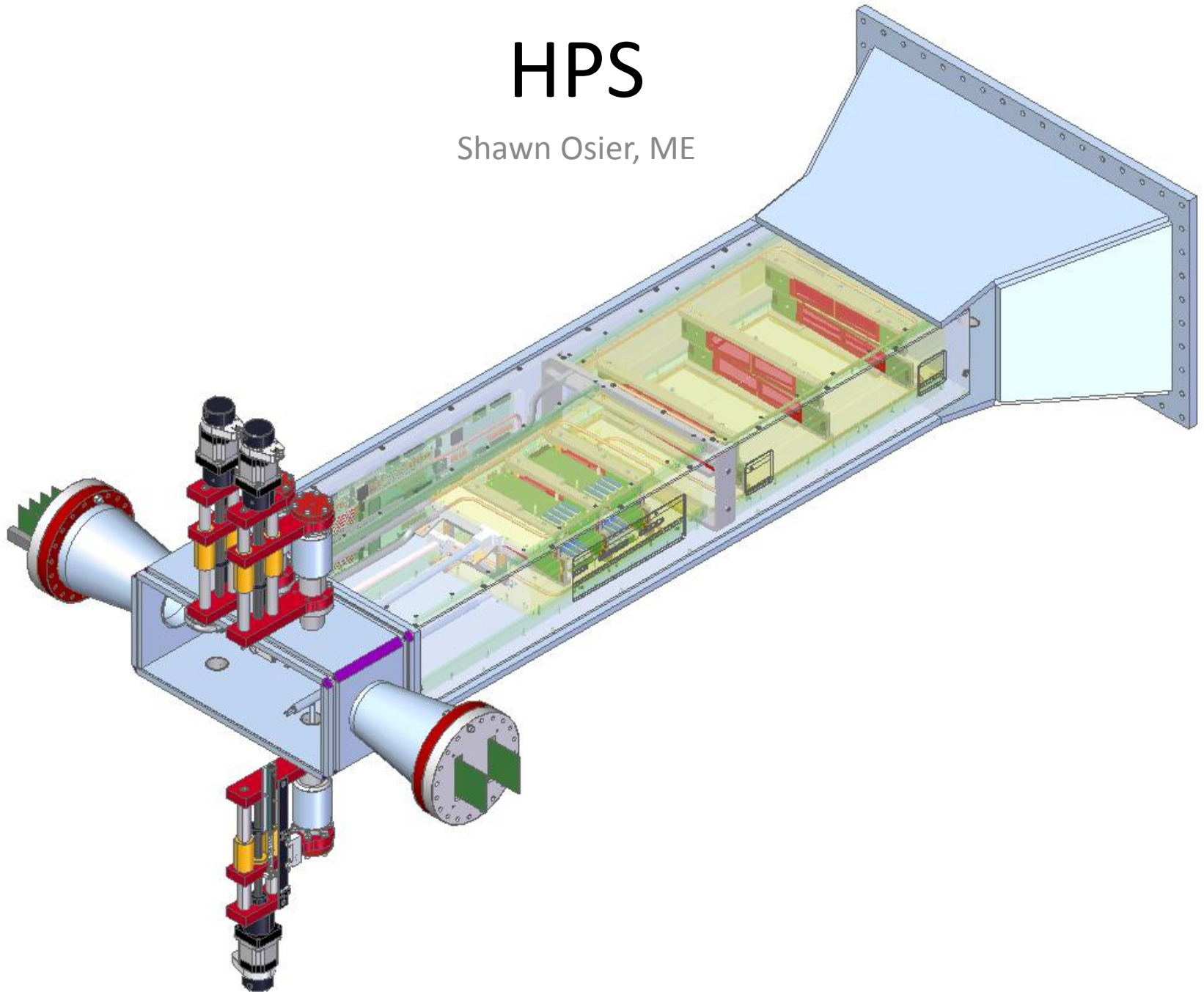
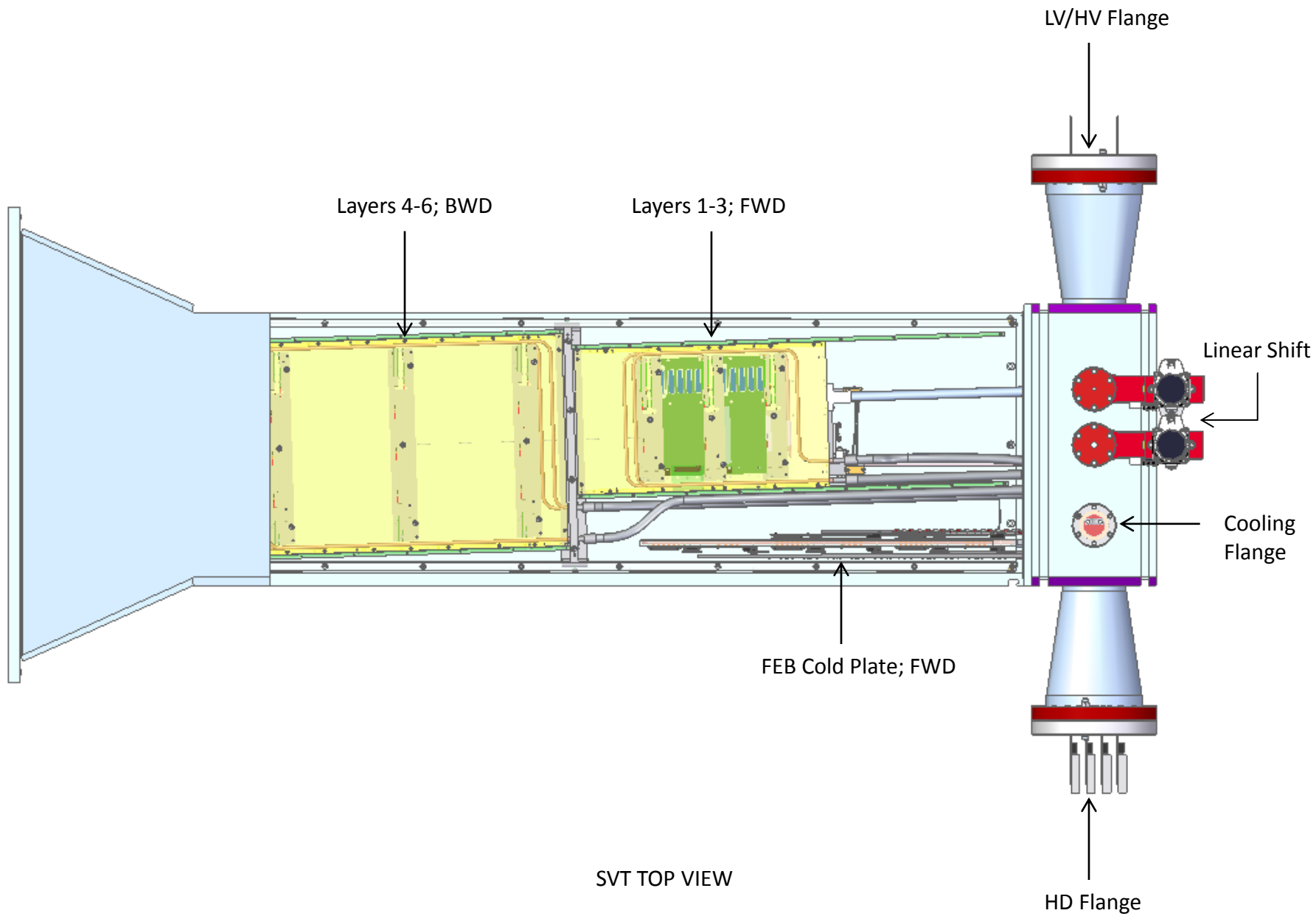


# HPS

Shawn Osier, ME





SVT Support Frame

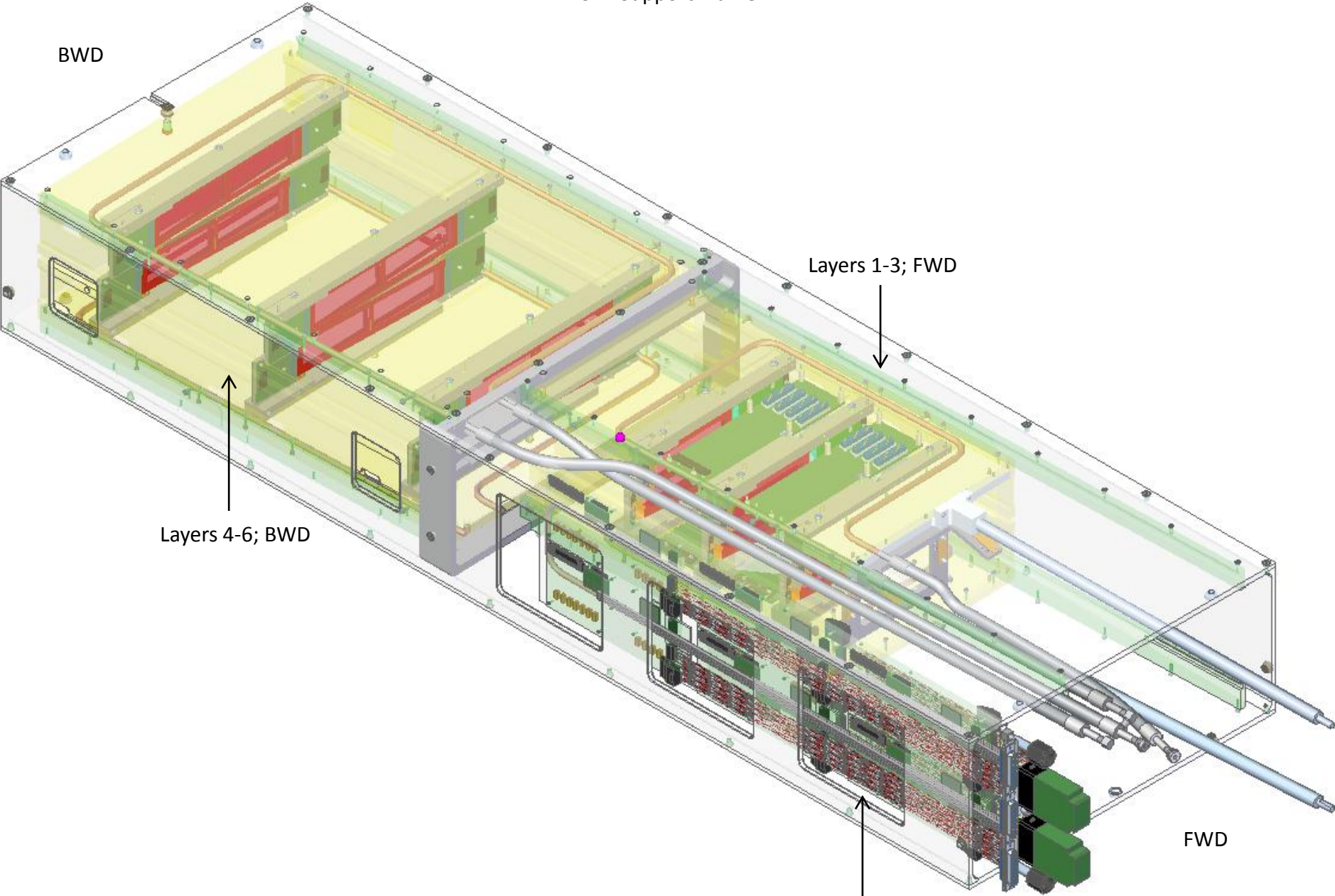
BWD

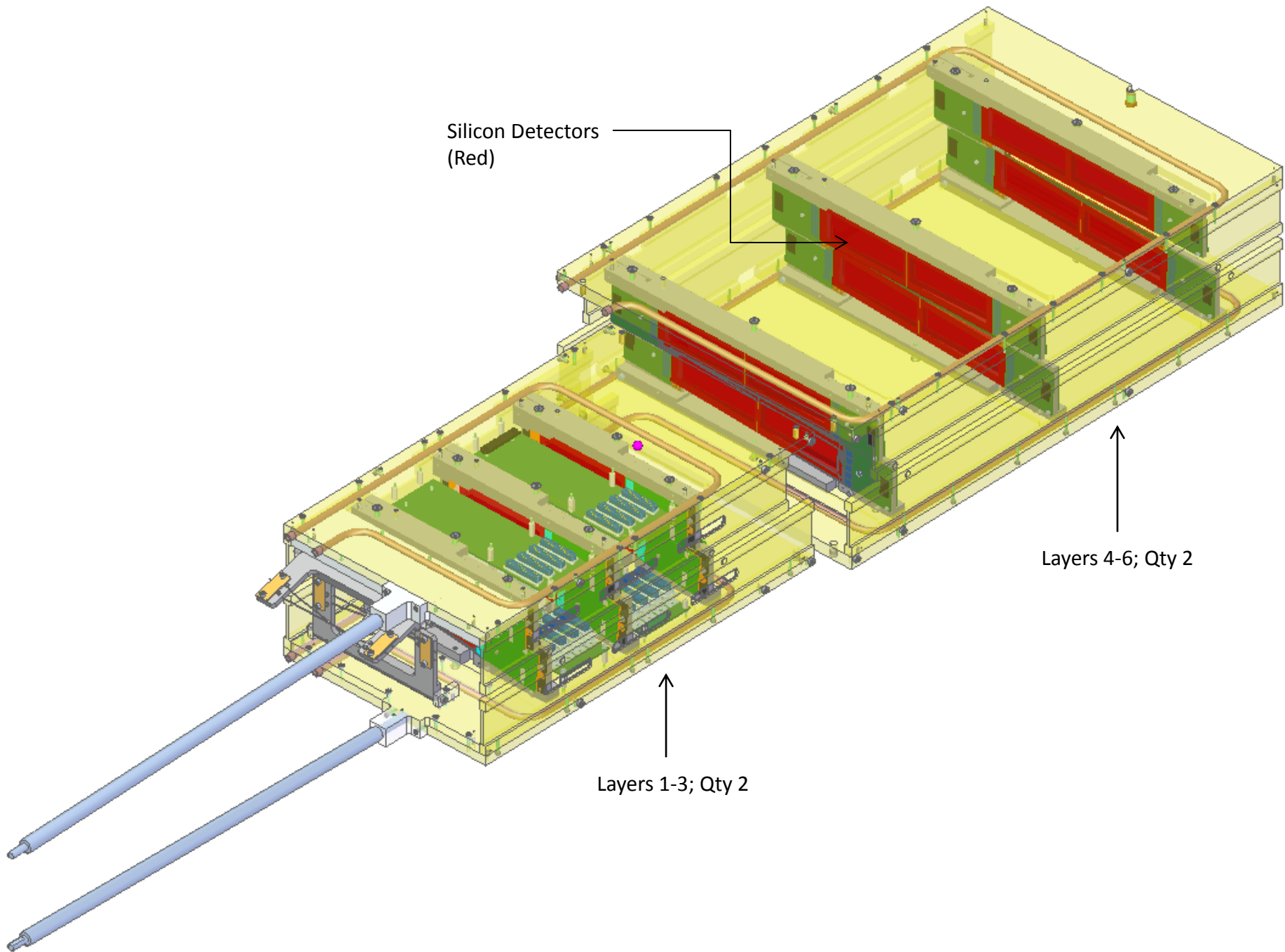
Layers 4-6; BWD

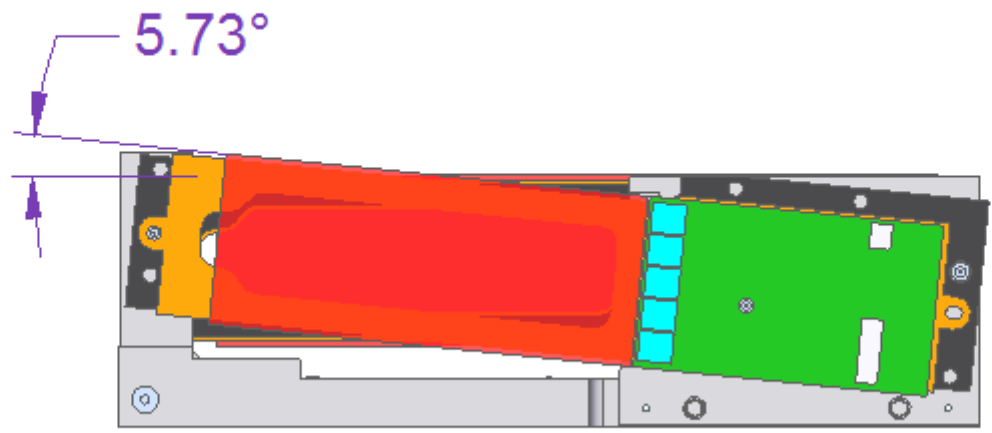
Layers 1-3; FWD

FWD

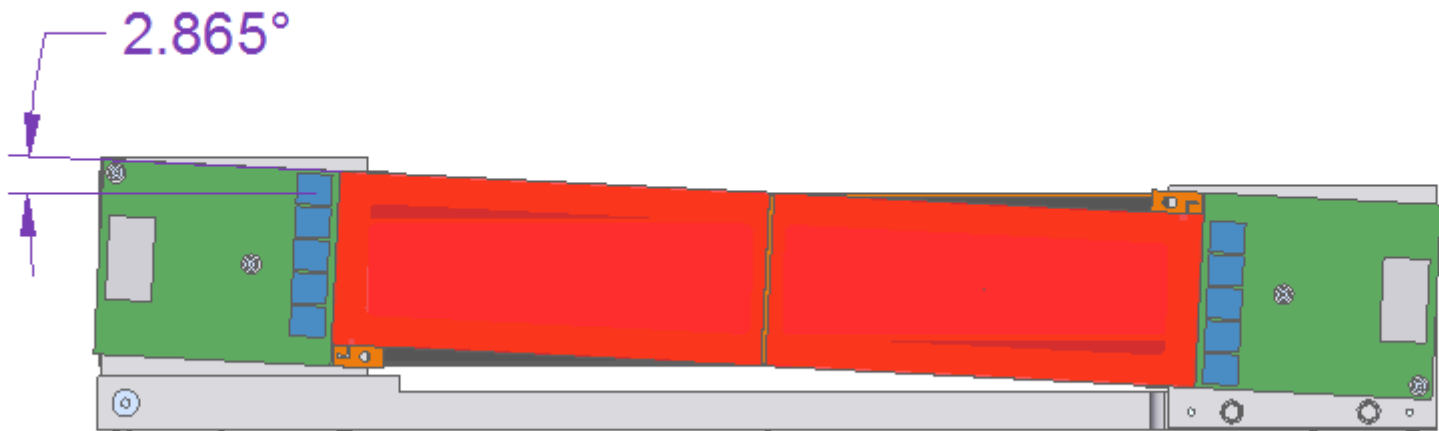
FEB Cold Plate; FWD





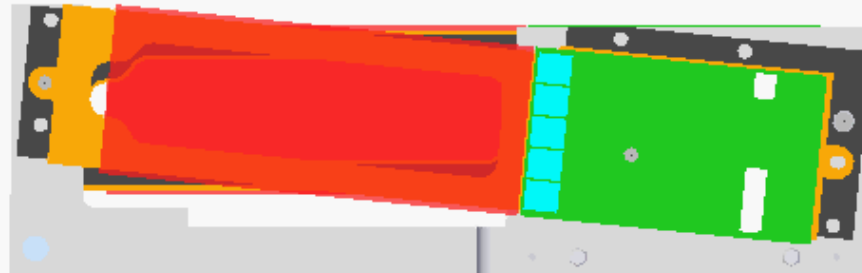


.100 radians



.050 radians

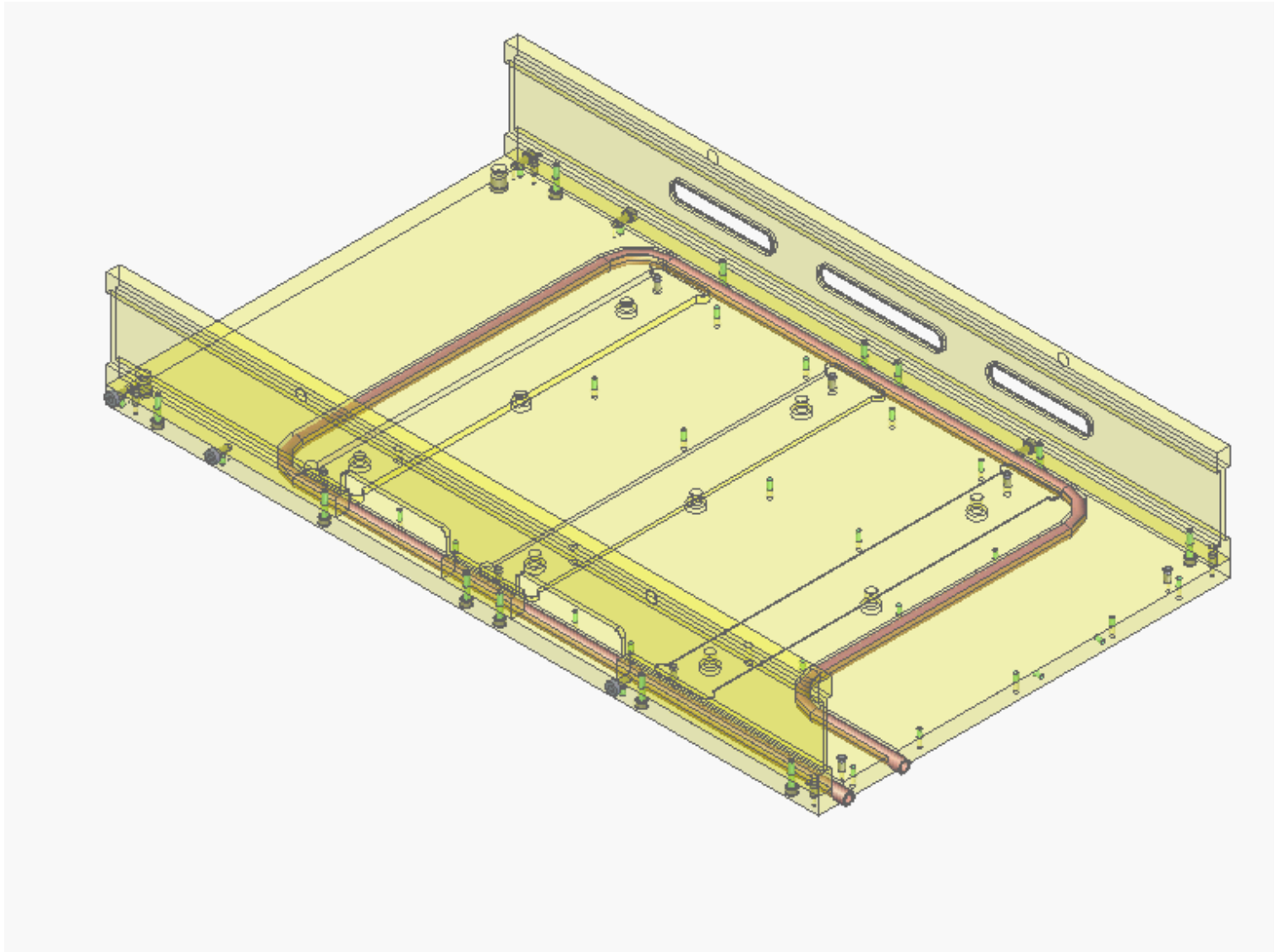
Layer 1-3 Support  
(Status: 6/20)



Layer 4-6 Support  
(Status: Complete)

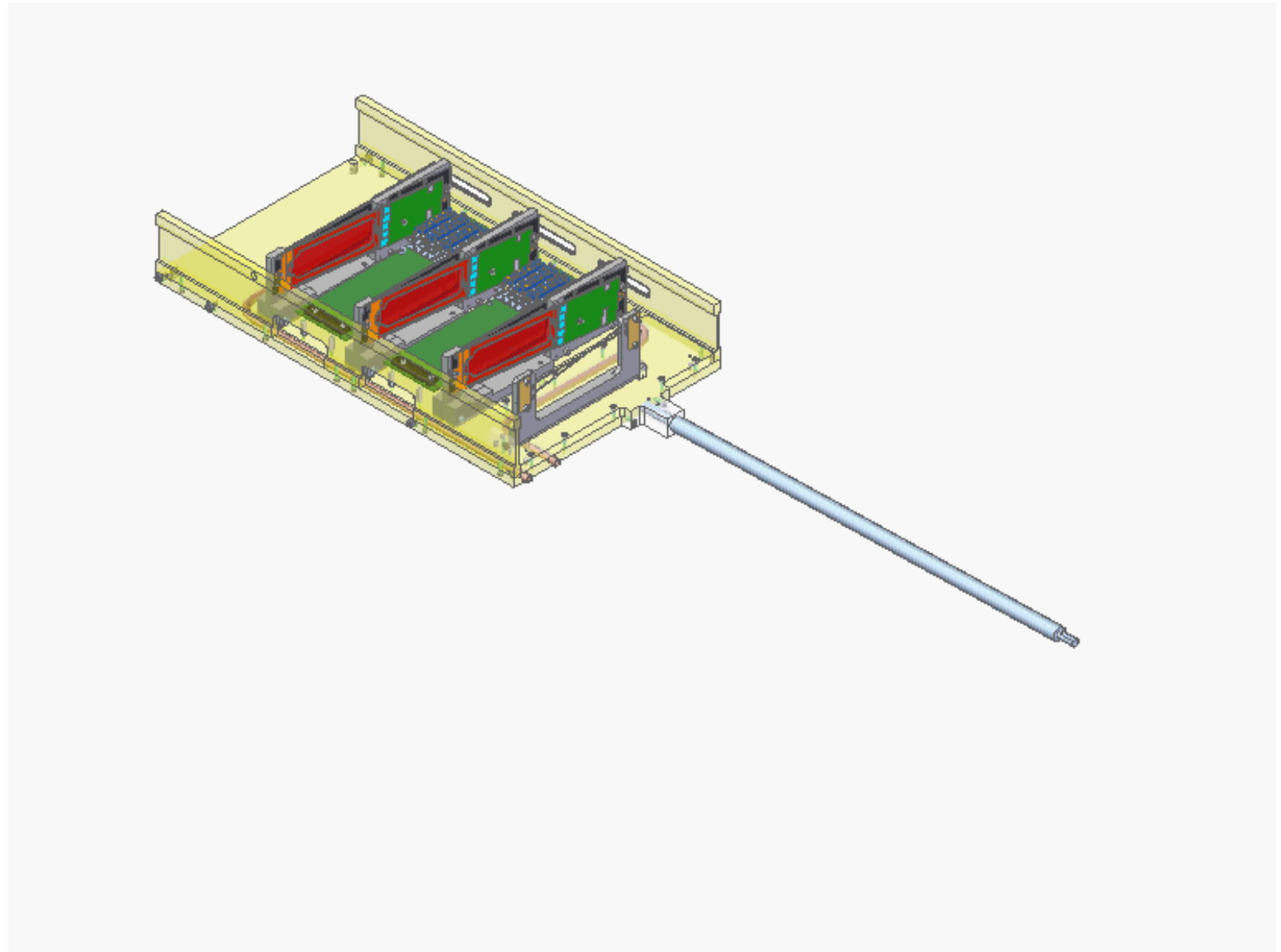


U-Support 1-3  
(Status: Complete)

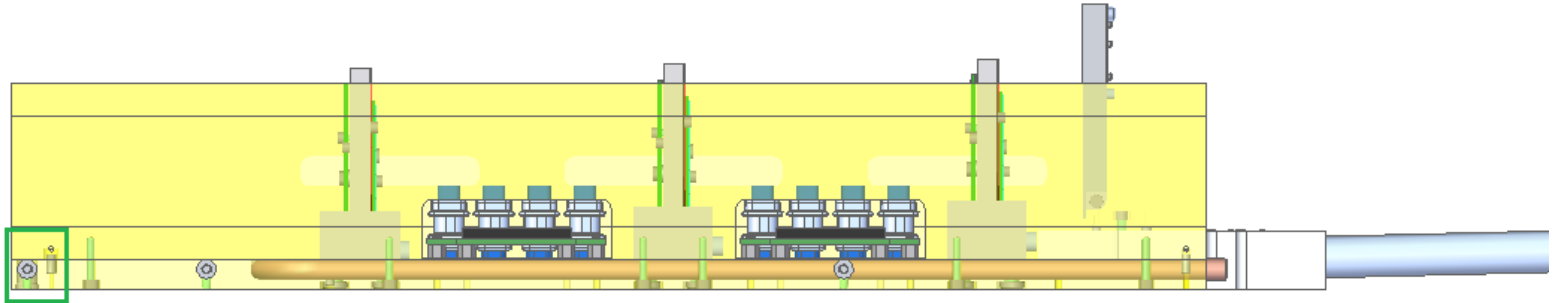




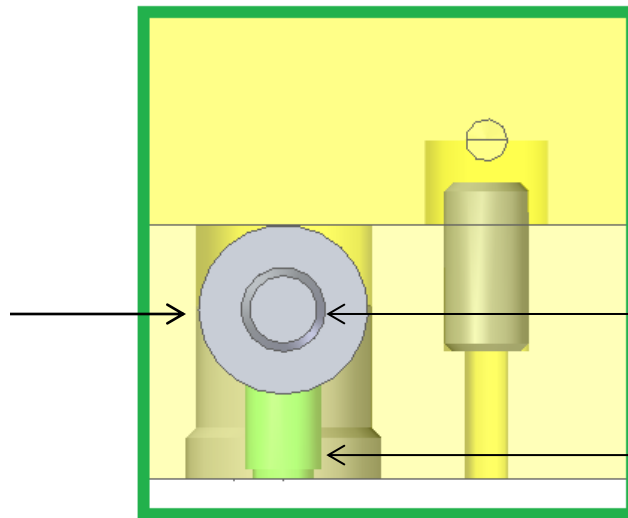
U-Support 1-3  
(Status: 6/30)



# Bearings



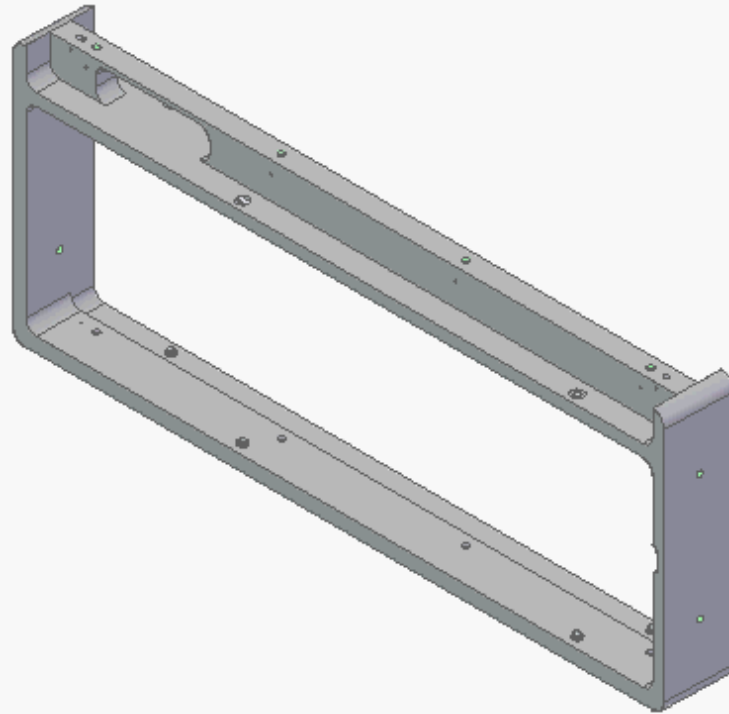
1/4" Full Ceramic Bearing,  
Qty: 3 per side



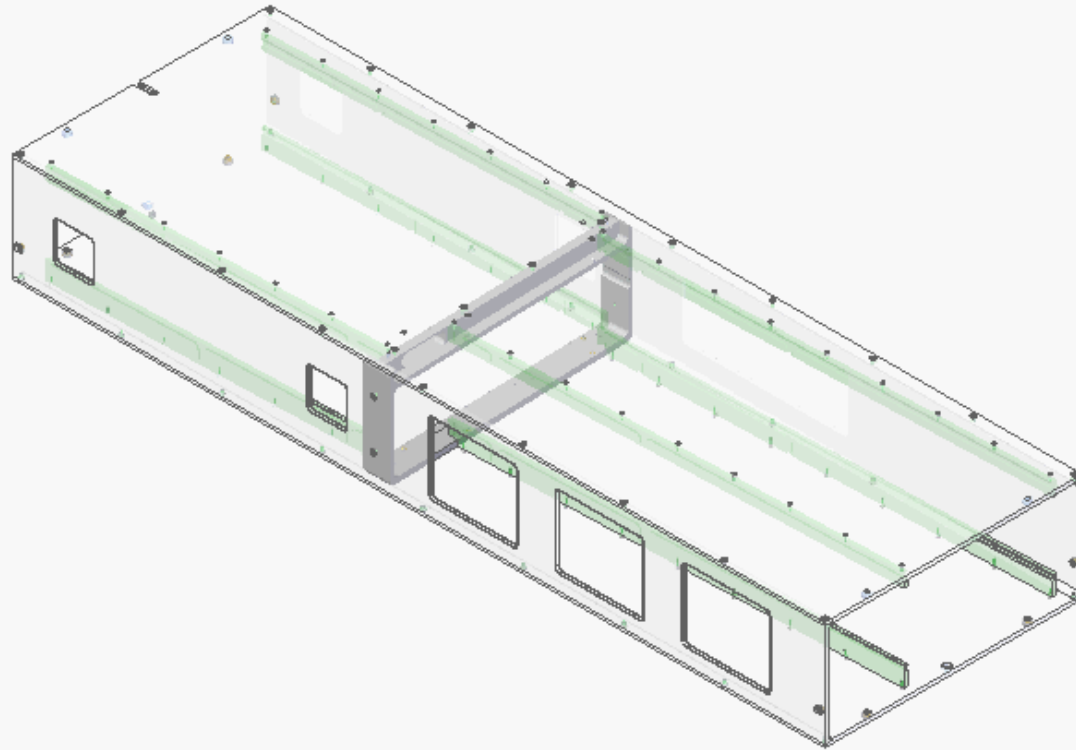
1/8 Dowel Pin Shaft

3/16 Set Screw

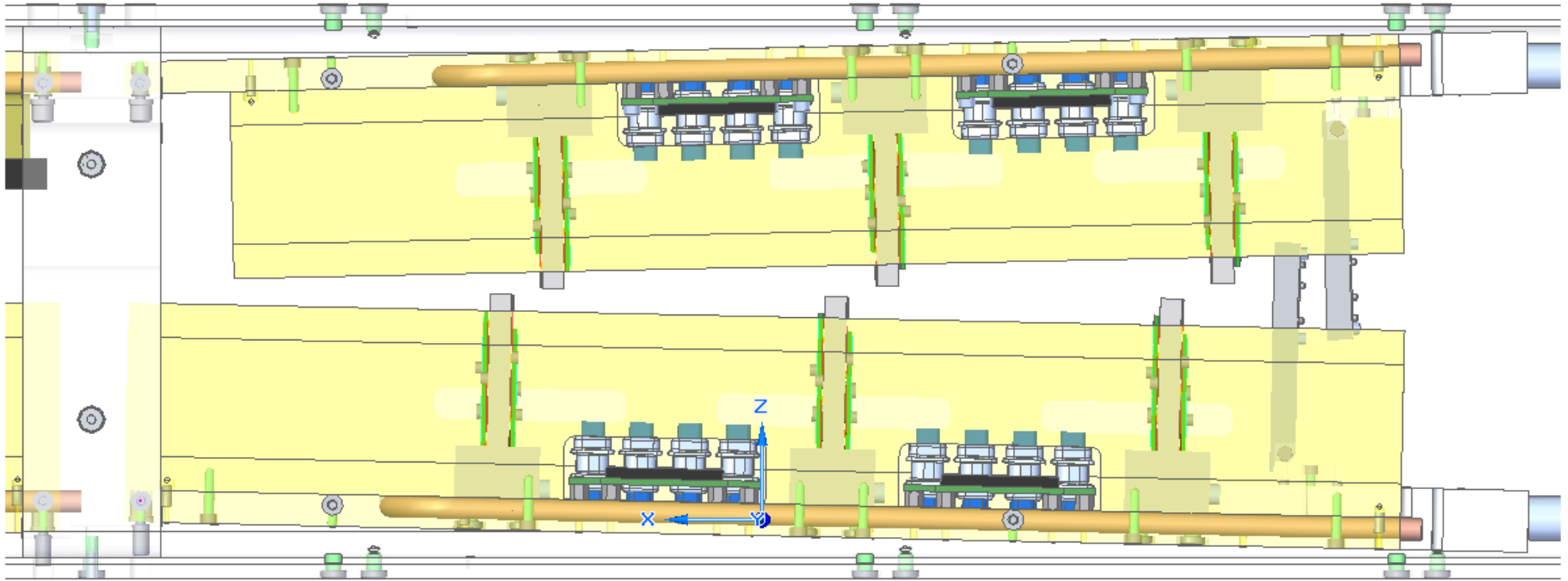
Central Support Ring  
(Status: Complete)

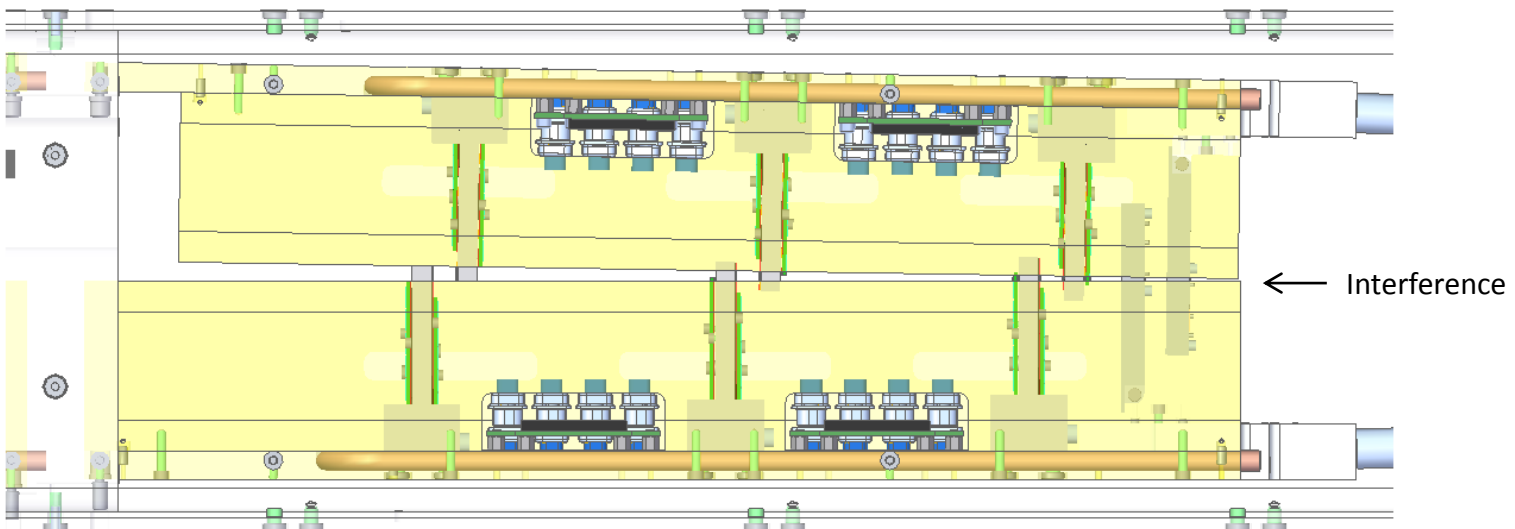


SVT Support Frame  
(Status: 6/20)

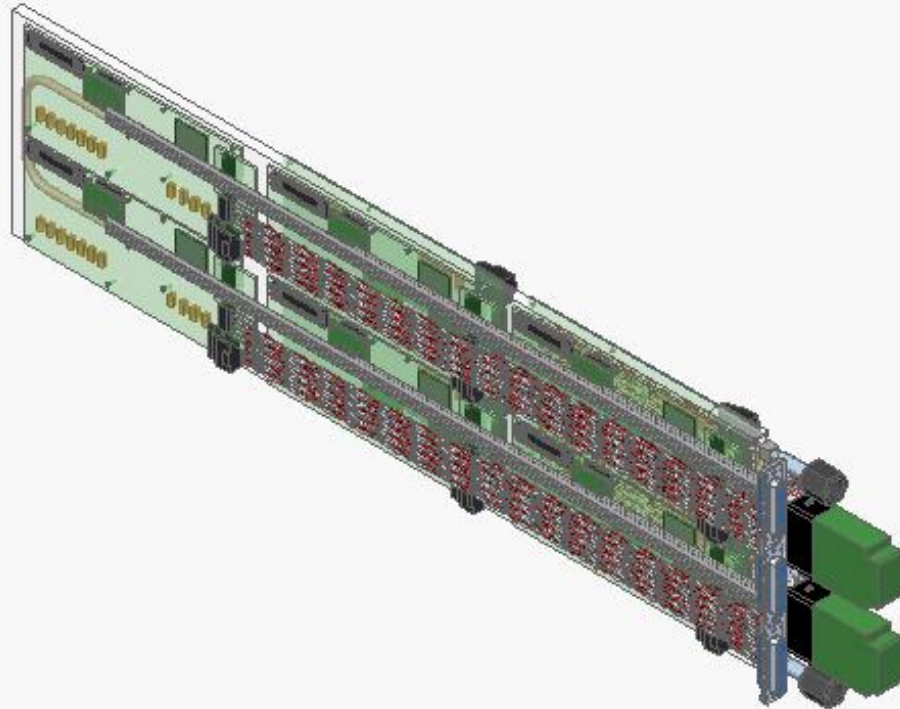


# Upper & Lower Angle 1.25 Degrees from Horizontal

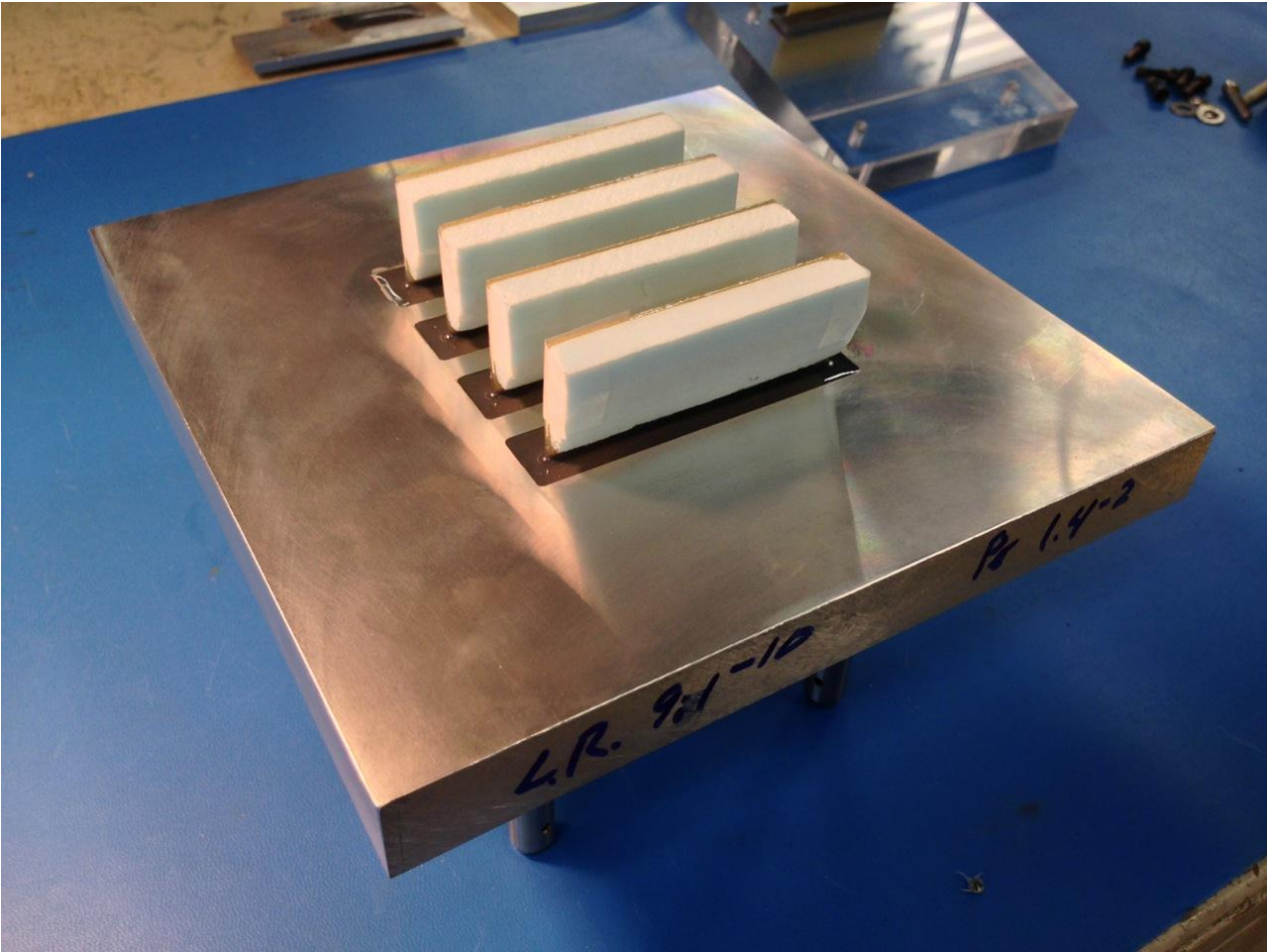




Front End Board Cold Plate  
(Status 6/30)



Testing LV/HV & HD Flange





LV/HV & HD Flange  
(Status: 6/30)

