

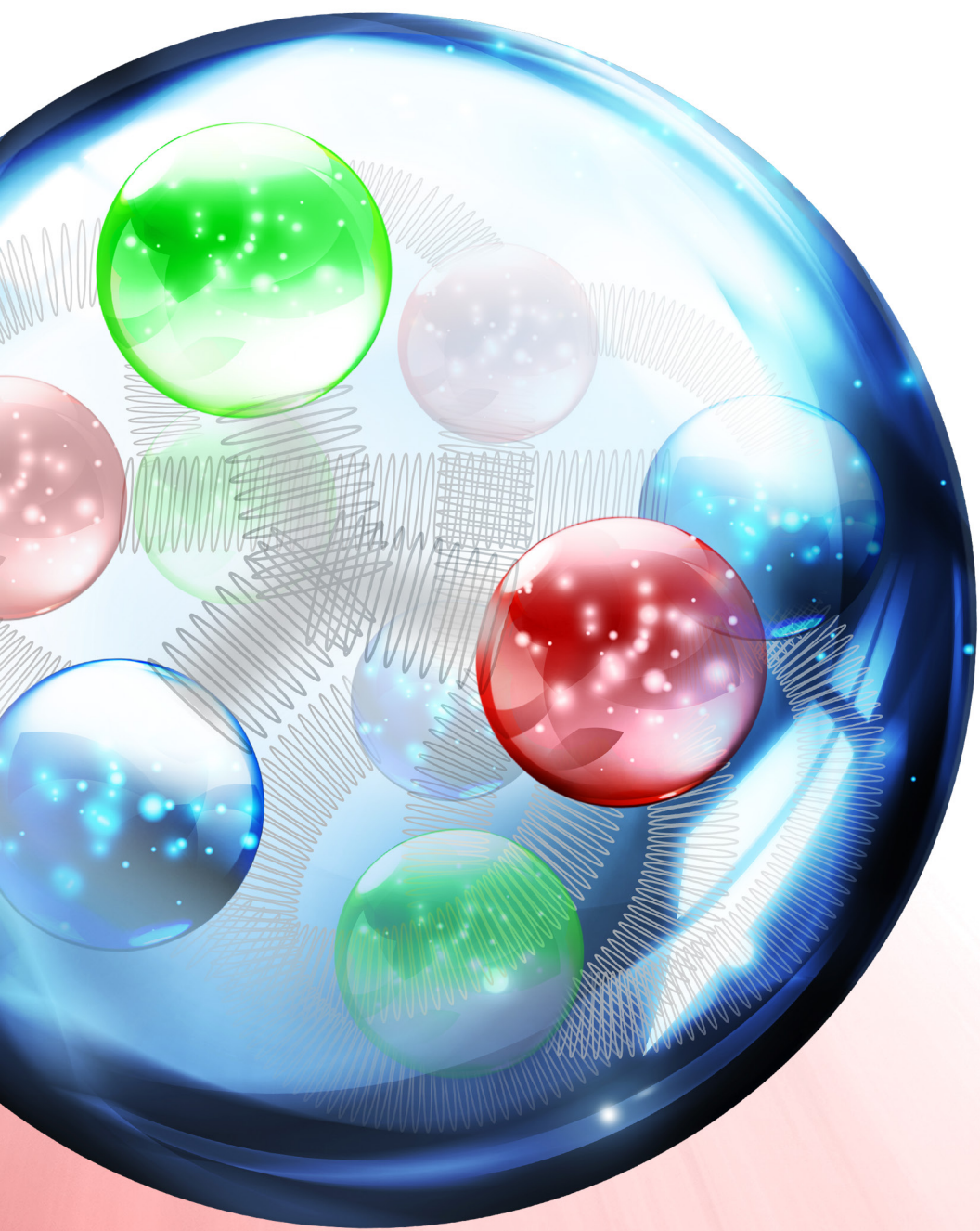
JLEIC COLLABORATION MEETING FALL 2016

Thomas Jefferson National Accelerator Facility
Newport News, VA

October 5-7, 2016

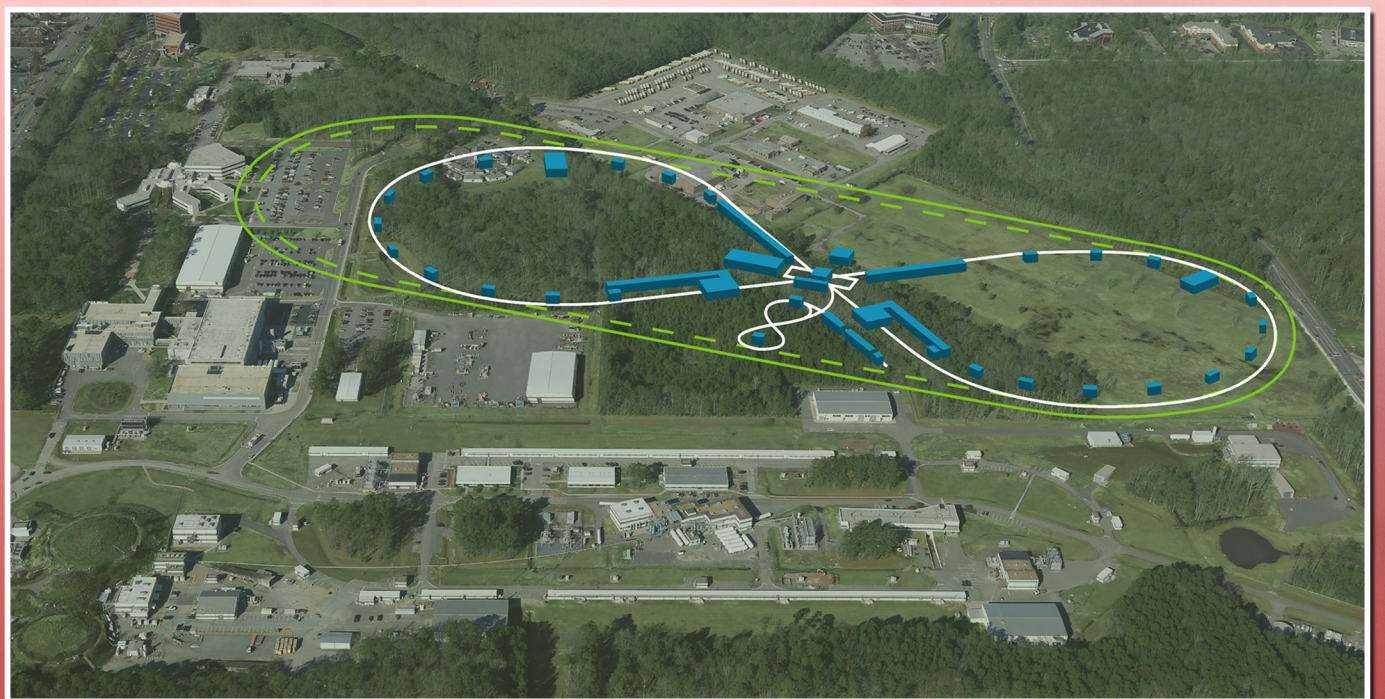
JLEIC, a high luminosity polarized electron-ion collider based on the CEBAF recirculating SRF linac, has been proposed at Jefferson Lab as its future nuclear science program beyond 12 GeV CEBAF fixed target program. The design studies and accelerator R&D of JLEIC have been actively pursued over the last ten years by Jefferson Lab staff and external collaborators.

Meeting will take place in the
CEBAF Center room F113



CONTACT:

Audrey Barron,
anichols@jlab.org
757-269-7327



<https://www.jlab.org/conferences/jleic-fall16/>