

# JLEIC COLLABORATION MEETING SPRING 2018

Thomas Jefferson National Accelerator Facility  
Newport News, VA

---

March 26-28, 2018

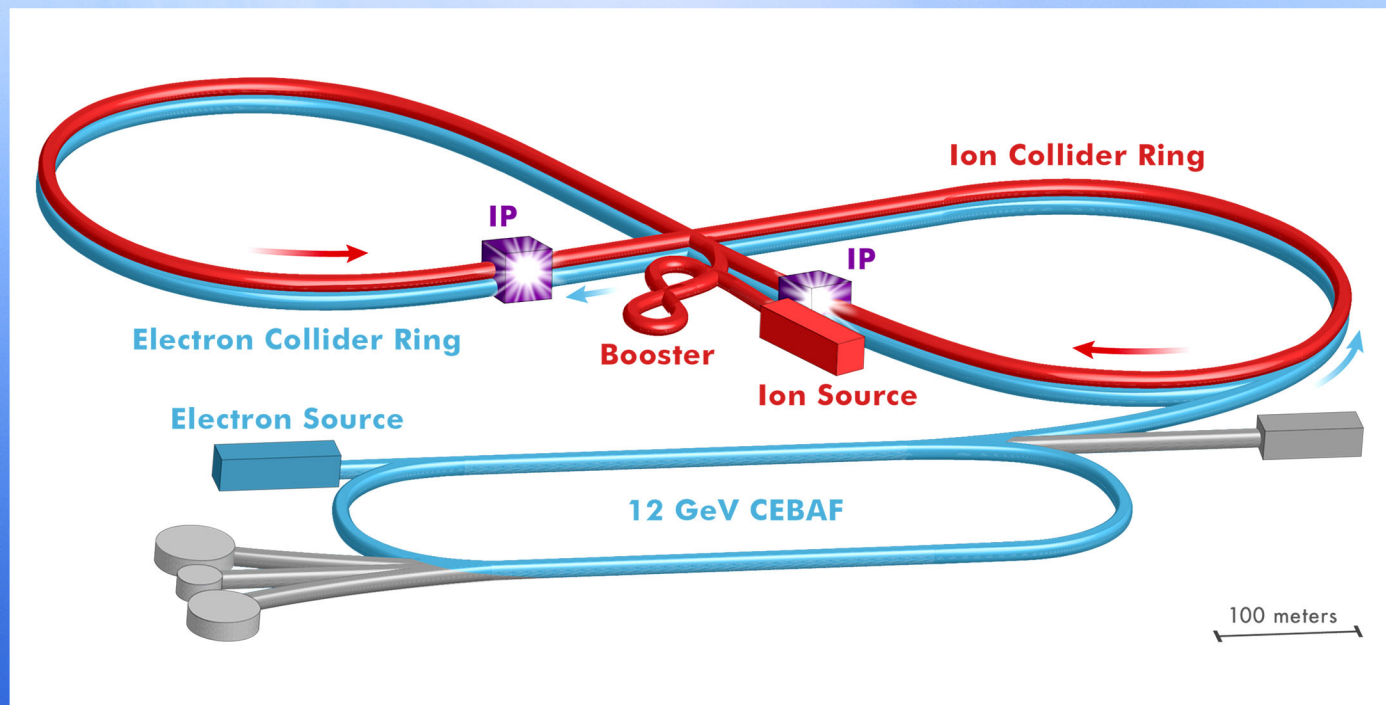
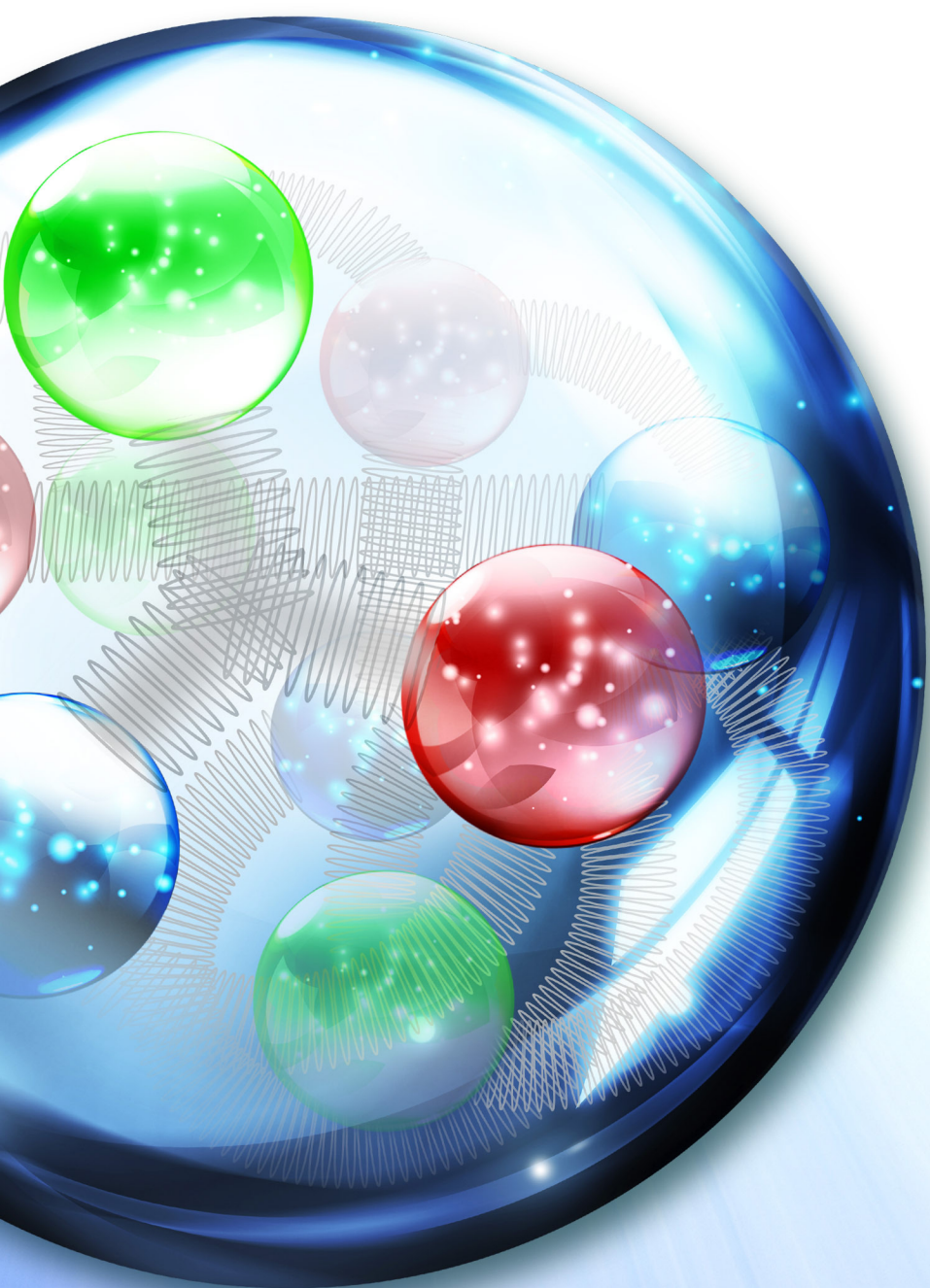
---

A high energy high luminosity polarized electron-ion collider was identified and recommended by the US DOE/NSF Nuclear Science Advisory Committee (NSAC) as the next major US nuclear science research facility in its 2015 Long Range Plan (LRP) .

JLEIC, an electron-ion collider based on the CEBAF recirculating Superconducting RF linac, has been proposed at Jefferson Lab for responding to this NSAC-LRP recommendation and as the lab's future nuclear science program beyond 12 GeV CEBAF fixed target program. The design studies and accelerator R&D of JLEIC have been actively pursued over the last ten years by Jefferson Lab staff and external collaborators.

Meeting will take place in CEBAF Center conference room F113.

---



CONTACT:  
Audrey Barron,  
anichols@jlab.org  
757-269-7327

[www.jlab.org/conferences/jleic-spring18](http://www.jlab.org/conferences/jleic-spring18)