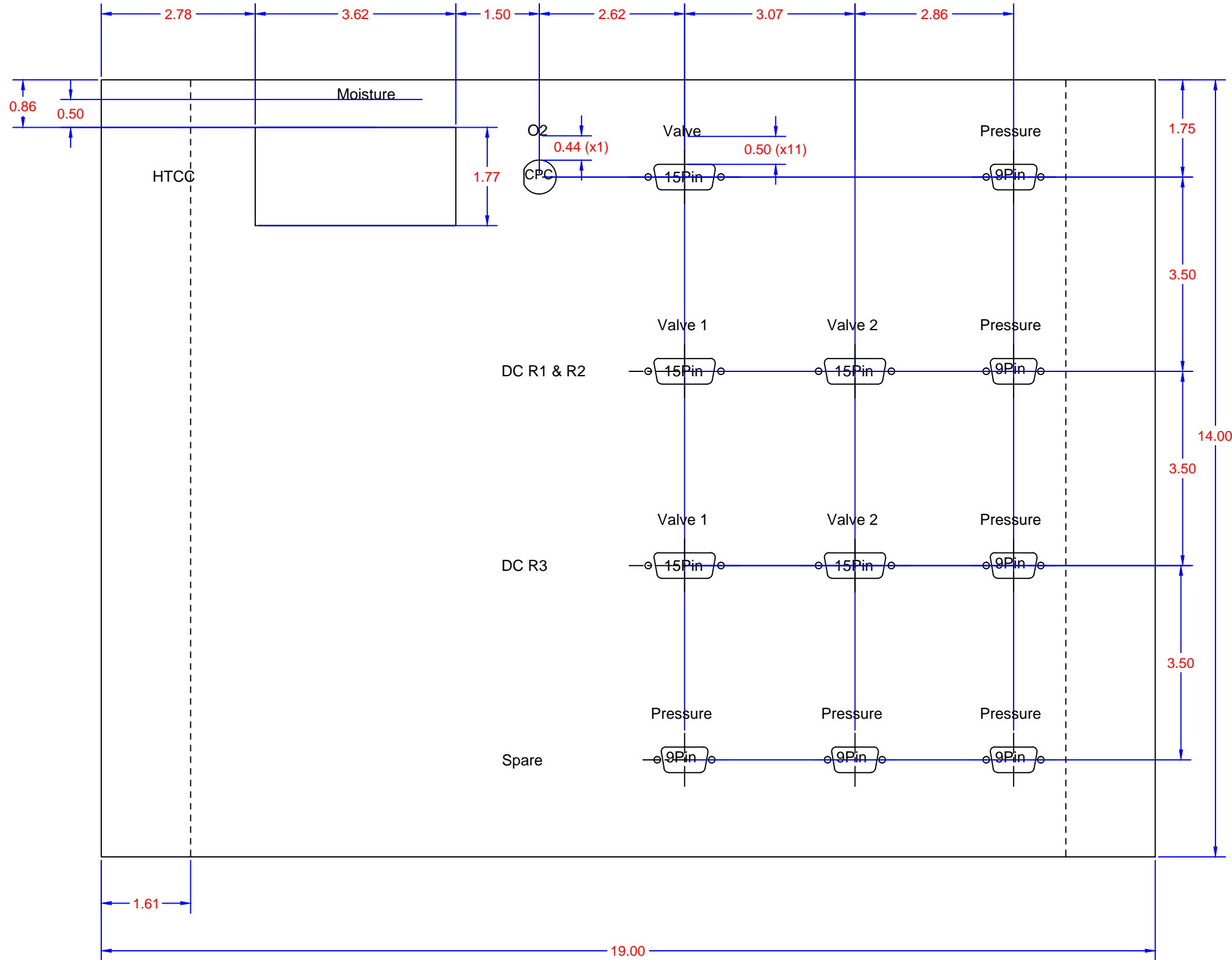



D  
C  
B  
A



# Par Metal P/N 14-19168B

<small>DWG &amp; TOL PER ANSI Y14.5 UNLESS OTHERWISE SPECIFIED DIMENSIONS ARE IN INCHES</small>	DRAWN M. McMullen	DATE 06/01/15	 Thomas Jefferson National Accelerator Facility <small>REPORT NO. JLAB-R-15-01</small> UNITED STATES DEPARTMENT OF ENERGY
	CHECKED	DATE	
MATERIAL	APPR/ORIGINATOR	DATE	TITLE HalB 12 GeV Upgrade Gas System SFL1 Controls/PID Front Design
FINISH <small>DEBURR &amp; BREAK ALL SHARP EDGES UNLESS OTHERWISE NOTED</small>	APPROVED	ENGINEER	SIZE D
DO NOT SCALE DRAWING	SCALE NONE	SHOWN ON	SHEET 1 OF X

D  
C  
B  
A

D  
C  
B  
A

8

7

6

5

4

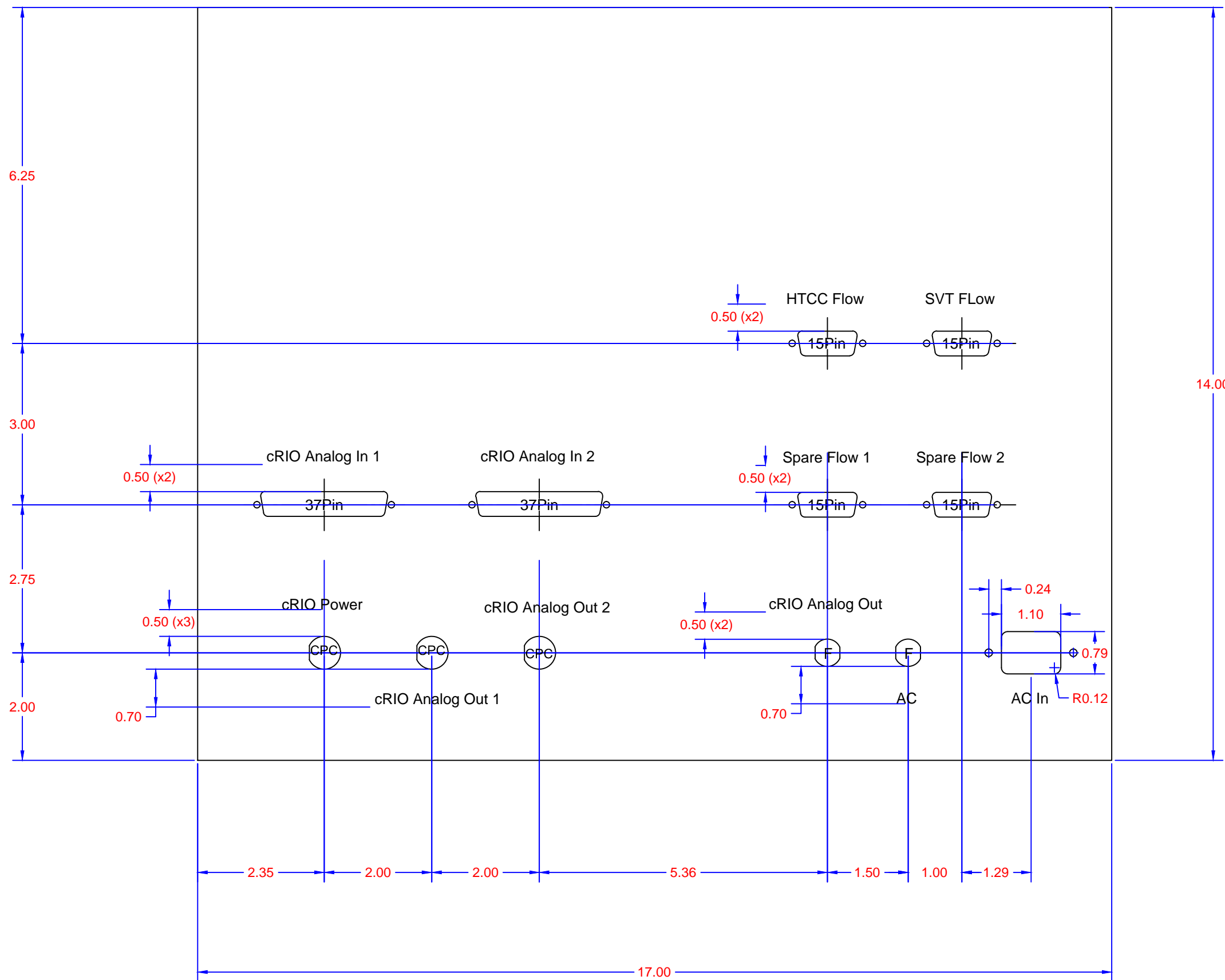
3

DWG. NO. XXXXXXXX


SH. 1

REV. -

1



# Par Metal P/N 14-19168B

<small>DWG &amp; TOL PER ANSI Y14.5 UNLESS OTHERWISE SPECIFIED DIMENSIONS ARE IN INCHES</small>	<small>DRAWN</small> M. McMullen	<small>DATE</small> 06/01/15	 <small>Thomas Jefferson National Accelerator Facility</small> <small>REPORT NERAC-99-008</small> <small>UNITED STATES DEPARTMENT OF ENERGY</small>
	<small>CHECKED</small>	<small>DATE</small>	
<small>MATERIAL</small>	<small>APPR/ORIGINATOR</small>	<small>DATE</small>	<small>TITLE</small> HalB 12 GeV Upgrade Gas System SFL1 Controls/PID Rear Design
<small>FINISH</small> <small>DEBURR &amp; BREAK ALL SHARP EDGES UNLESS OTHERWISE NOTED</small> <small>DO NOT SCALE DRAWING</small>	<small>APPROVED</small> <small>ENGINEER</small>	<small>SCALE</small> NONE	<small>SIZE</small> D
		<small>SHOWN ON</small>	<small>DWG. NO.</small> XXXXXXXX
		<small>SHEET</small> 1	<small>REV.</small> -
		<small>OF</small> X	

8

7

6

5

4

3

2

1

D

C

B

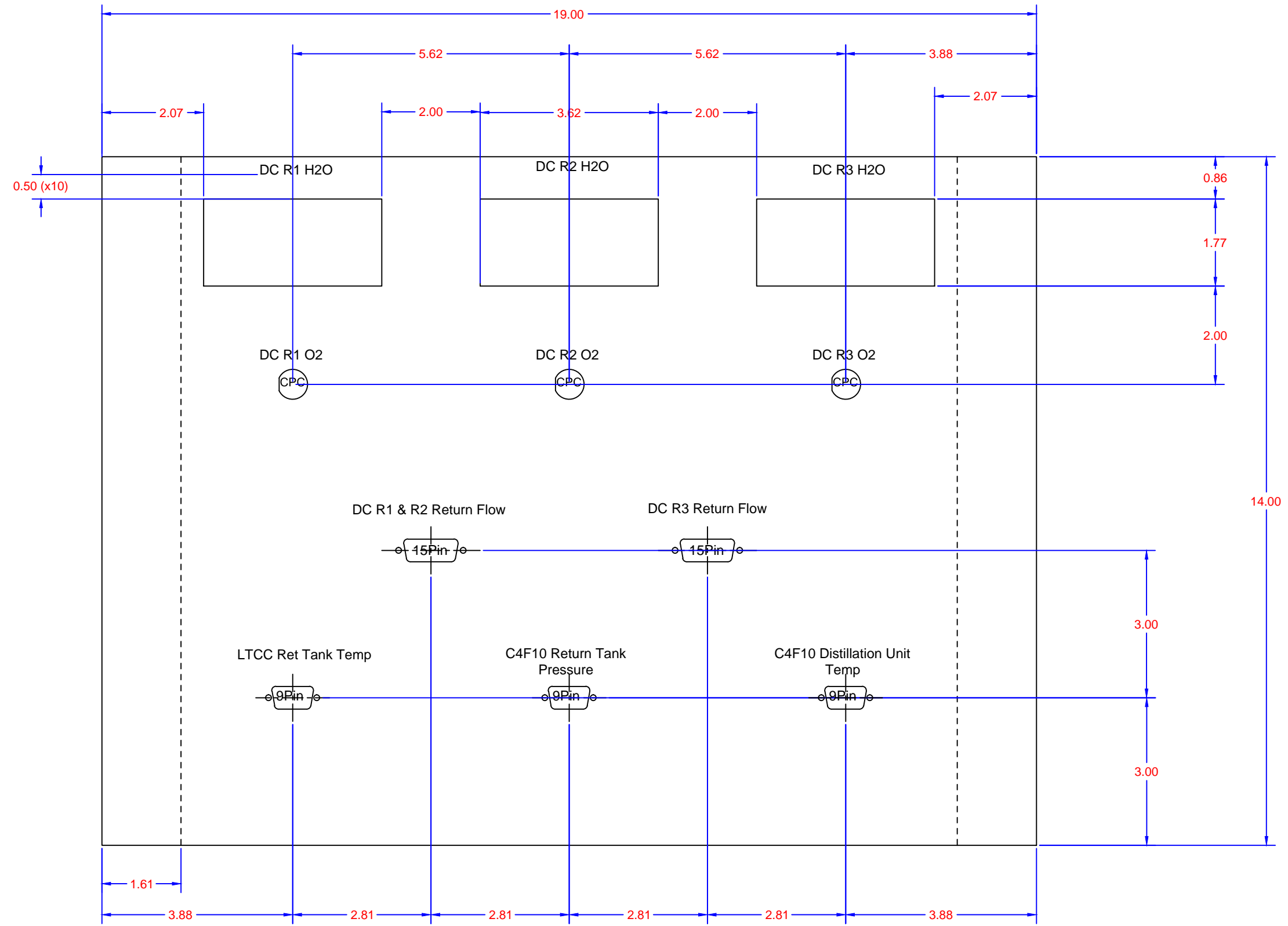
A

D

C

B

A



# Par Metal P/N 14-19168B

<small>DM &amp; TOL PER ANSI Y14.5 UNLESS OTHERWISE SPECIFIED DIMENSIONS ARE IN INCHES</small>	DRAWN M. McMullen	DATE 06/01/15	Thomas Jefferson National Accelerator Facility <small>REPORT NO. W-8909 UNITED STATES DEPARTMENT OF ENERGY</small>
	CHECKED	DATE	
MATERIAL	APPR/ORIGINATOR	DATE	TITLE HalB 12 GeV Upgrade Gas System Gas Shed Front Design
FINISH <small>DEBURR &amp; BREAK ALL SHARP EDGES UNLESS OTHERWISE NOTED</small>	APPROVED	ENGINEER	SIZE D
DO NOT SCALE DRAWING	SCALE NONE		CAD I.D. NO.      DRAWING NO.      REV.      SHEET 1 OF X XXXXXXXX

D

C

B

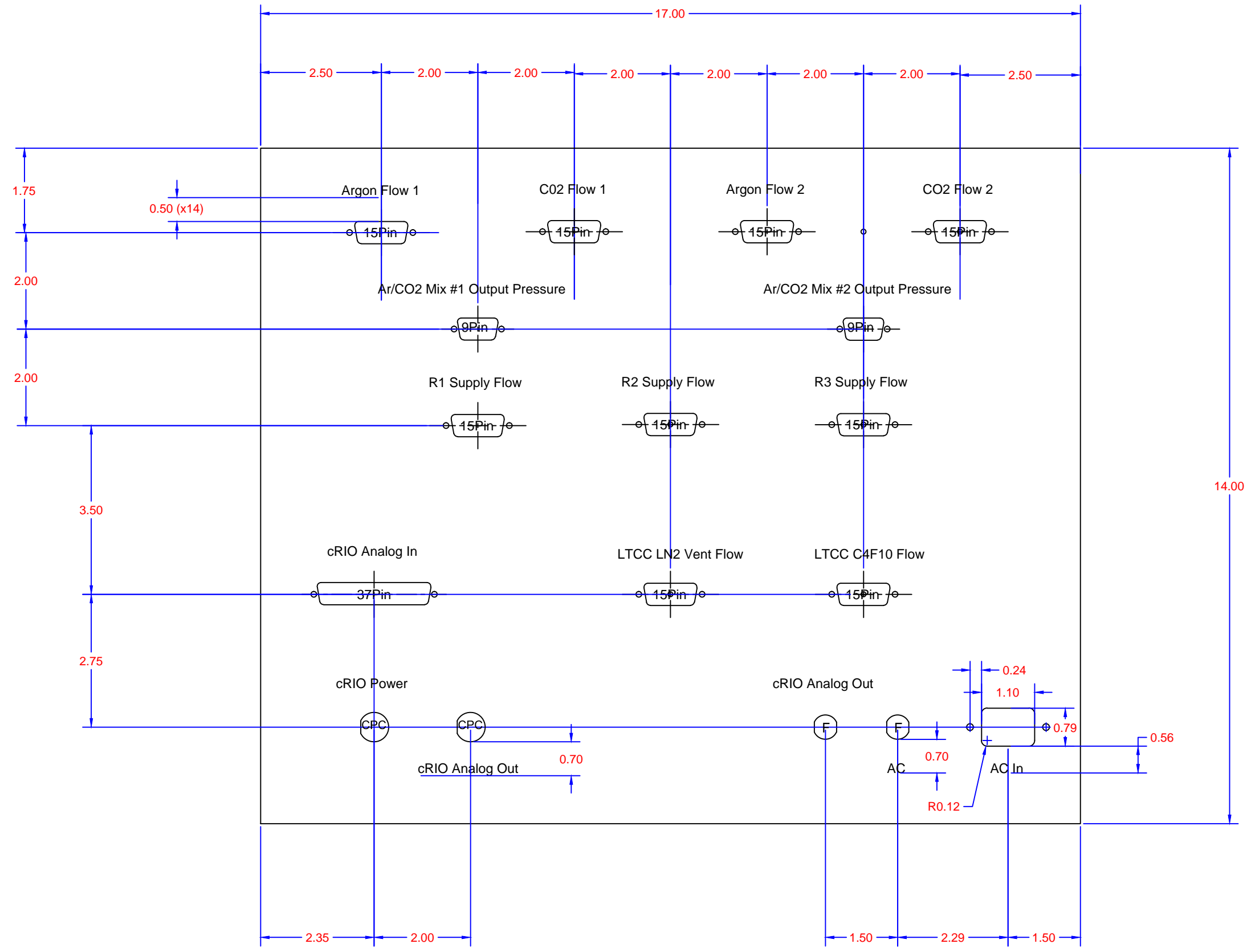
A

D

C

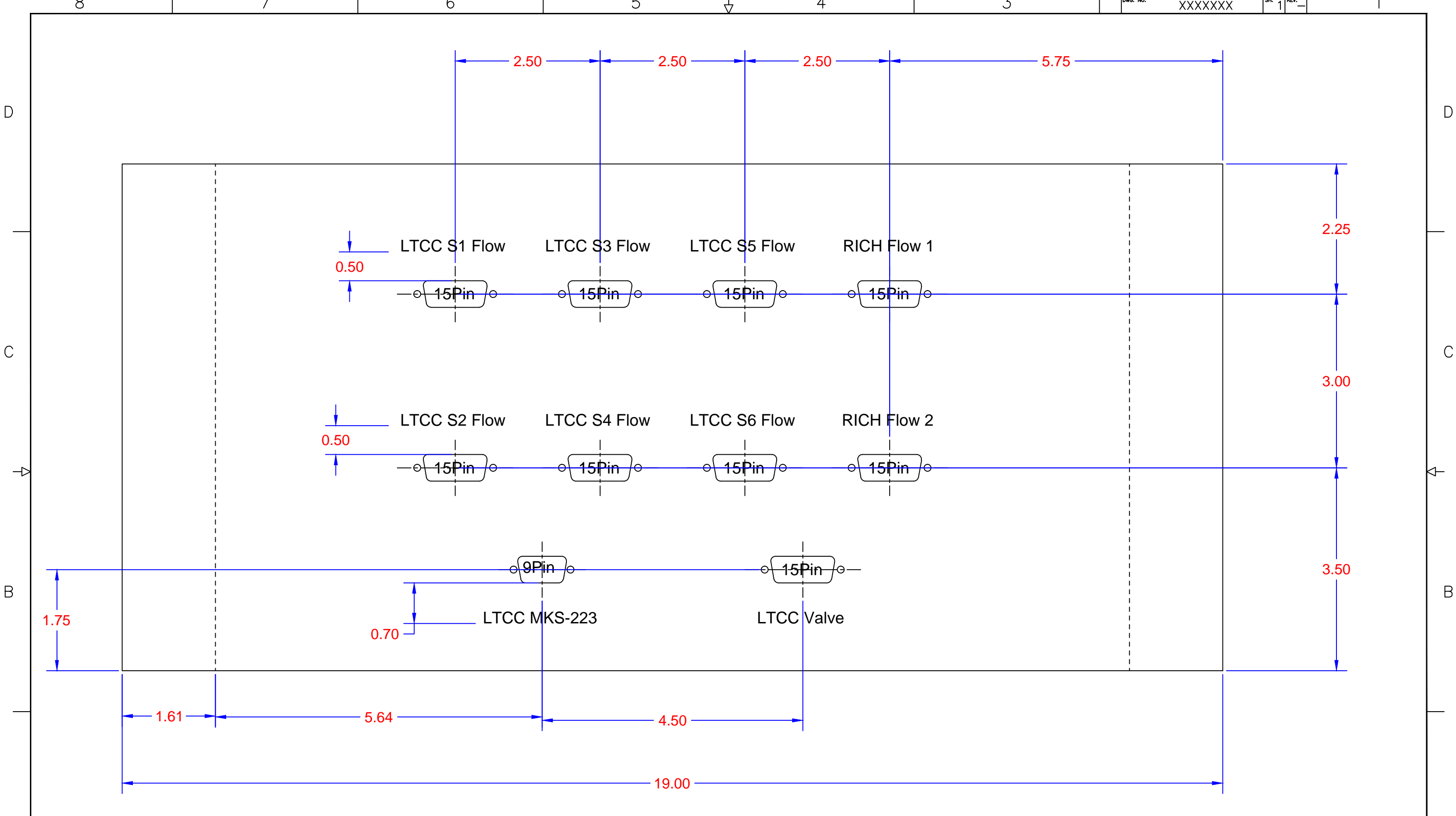
B

A




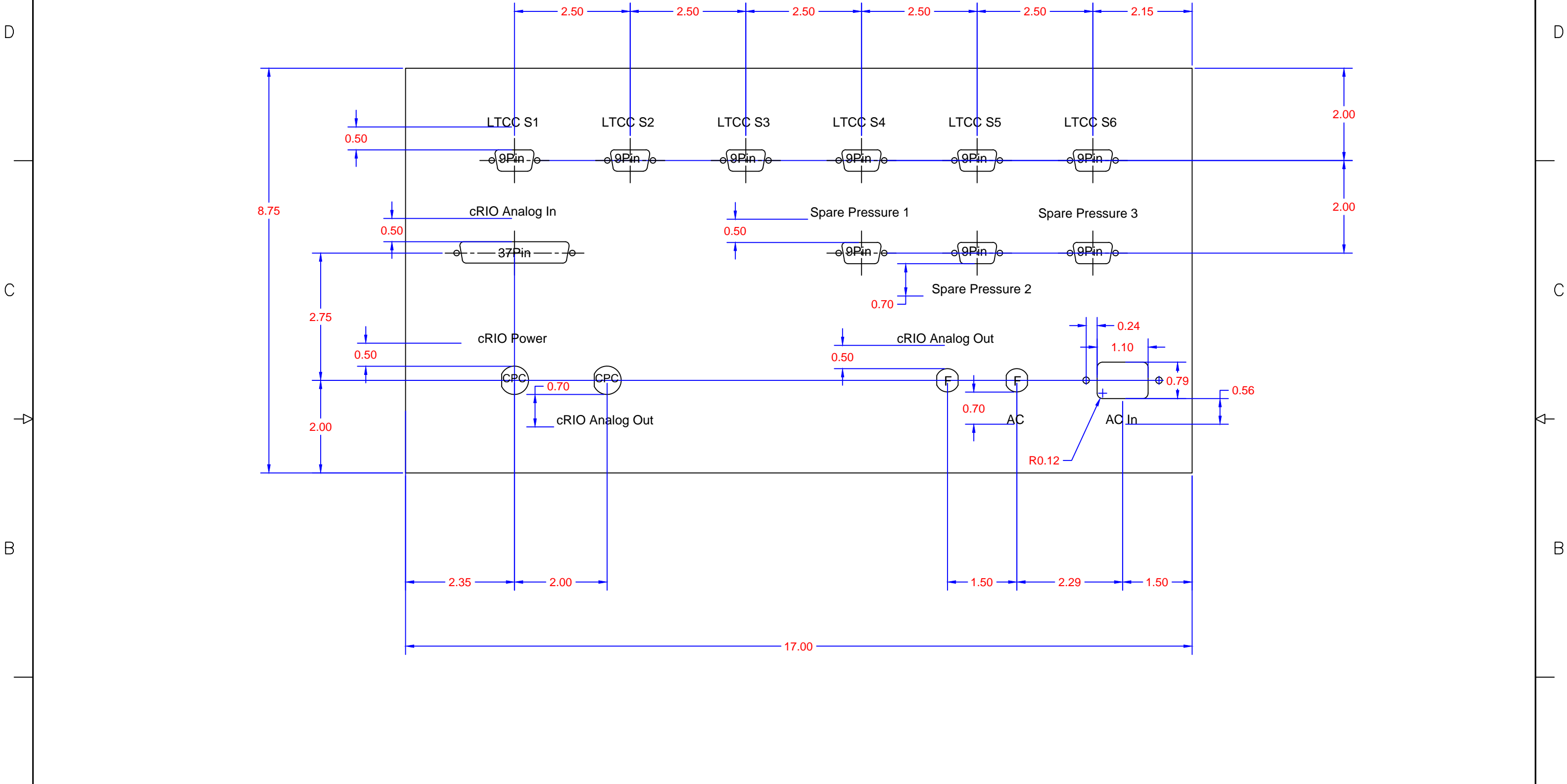
# Par Metal P/N 14-19168B

<small>DWG &amp; TOL PER ANSI Y14.5 UNLESS OTHERWISE SPECIFIED DIMENSIONS ARE IN INCHES</small>	DRAWN M. McMullen	DATE 06/01/15	Thomas Jefferson National Accelerator Facility <small>REPORT NO. JLAB-R-15-001</small> UNITED STATES DEPARTMENT OF ENERGY
	CHECKED	DATE	
MATERIAL	APPR/ORIGINATOR	DATE	TITLE HallB 12 GeV Upgrade Gas Shed Rear Design
FINISH <small>DEBURR &amp; BREAK ALL SHARP EDGES UNLESS OTHERWISE NOTED</small>	APPROVED	ENGINEER	SIZE D
DO NOT SCALE DRAWING	SCALE NONE	SHOWN ON	SHEET 1 OF X



# Par Metal P/N 14-19165B

<small>DM &amp; TOL PER ANSI Y14.5 UNLESS OTHERWISE SPECIFIED DIMENSIONS ARE IN INCHES</small>	<small>DRAWN</small> M. McMullen	<small>DATE</small> 06/01/15	 Thomas Jefferson National Accelerator Facility <small>REPORT NO. JLAB-R-15-001</small> UNITED STATES DEPARTMENT OF ENERGY
	<small>CHECKED</small>	<small>DATE</small>	
<small>MATERIAL</small>	<small>APPR/ORIGINATOR</small>	<small>DATE</small>	<small>TITLE</small> HallB 12 GeV Upgrade Gas System FC Front Design
<small>FINISH</small> <small>DEBURR &amp; BREAK ALL SHARP EDGES UNLESS OTHERWISE NOTED</small>	<small>APPROVED</small>	<small>SCALE</small> NONE	<small>SIZE</small> D
<small>DO NOT SCALE DRAWING</small>	<small>ENGINEER</small>	<small>SCALE</small> NONE	<small>DWG. NO.</small> XXXXXXXX
		<small>SCALE</small> NONE	<small>REV.</small> -
		<small>SCALE</small> NONE	<small>SHEET</small> 1 OF X



# Par Metal P/N 14-19165B

<small>                 DIM &amp; TOL PER ANSI Y14.5                  UNLESS OTHERWISE SPECIFIED                  DIMENSIONS ARE IN INCHES             </small>	DRAWN M. McMullen	DATE 06/01/15	Thomas Jefferson National Accelerator Facility <small>REPORT NO. JLAB-R-15-001</small> UNITED STATES DEPARTMENT OF ENERGY
	CHECKED	DATE	
MATERIAL	APPR/ORIGINATOR	DATE	TITLE HalB 12 GeV Upgrade Gas System FC Rear Design
FINISH <small>DEBURR &amp; BREAK ALL SHARP EDGES UNLESS OTHERWISE NOTED</small>	APPROVED	DATE	SIZE D
DO NOT SCALE DRAWING	ENGINEER	DATE	CAD I.D. NO. XXXXXXXXX
			SCALE NONE SHOWN ON
			SHEET 1 OF X