

# **Crystals overview**

Vladimir V. Berdnikov (CUA)

# Crystal delivery status

- All crystals for NPS delivered to Jlab and located on site in NPS cleanroom
- Total number of crystals
  - **CRYTUR** 1379 pcs (ready to go)
  - **SICCAS** 446 pcs (portion of crystals are still questionable)

2019

2022



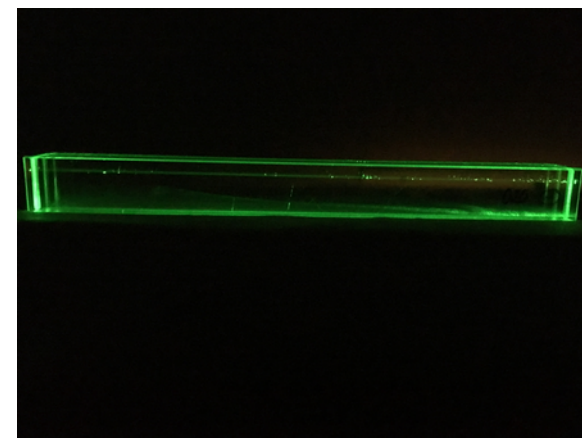
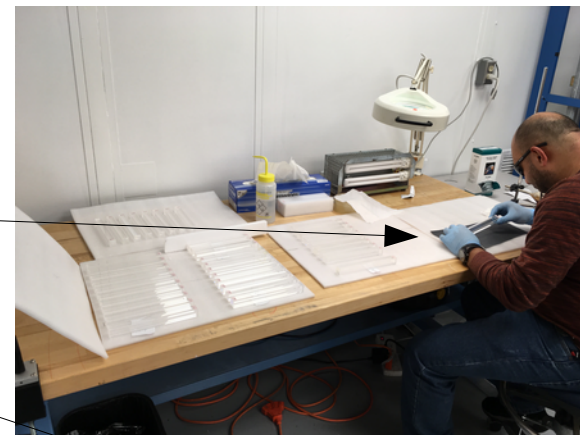
# Crystals quality assurance protocols

## CRYTUR QA log

December 10 2019  
 Invoice 30/2019/523  
 Crytur PWO 10pcs

100796	20.464	20.459	look clean, area of dots bottom (intensity, low); 20% dots are	GL
	20.466	20.463	small scratches, 1mm chip at the edge	
	20.465	20.464		
030802	20.461	20.445	looks clean	
	20.466	20.450	small scratches, 13mm scratch	
	20.445	20.458	looks clean	
050789	20.446	20.462	small scratches	
	20.456	20.473		
	20.438	20.468	looks clean	
120795	20.451	20.466	small scratches	
	20.467	20.464		
	20.455	20.456	looks clean, dots area center ~15%	
070794	20.453	20.456	small scratches	
	20.455	20.458		
	20.461	20.459	looks clean	
020787	20.462	20.458	small scratches, 3 mid deep scratches	
	20.465	20.460		
	20.463	20.475	looks clean	
040790	20.466	20.481	small scratches, 23 mm mid deep scratch	
	20.459	20.483		
	20.460	20.457	looks clean, some dots <15% area	
200792	20.460	20.450	small scratches, 24 mm scratch	
	20.463	20.447		
	20.459	20.471	looks clean, some dots <15% area	
610781	20.458	20.466	small scratches, 28 mm scratch	
	20.460	20.462		
	20.465	20.468	looks clean	
020804	20.464	20.461	small scratches, few <1mm <sup>2</sup> chips at the edge	
	20.470	20.456		

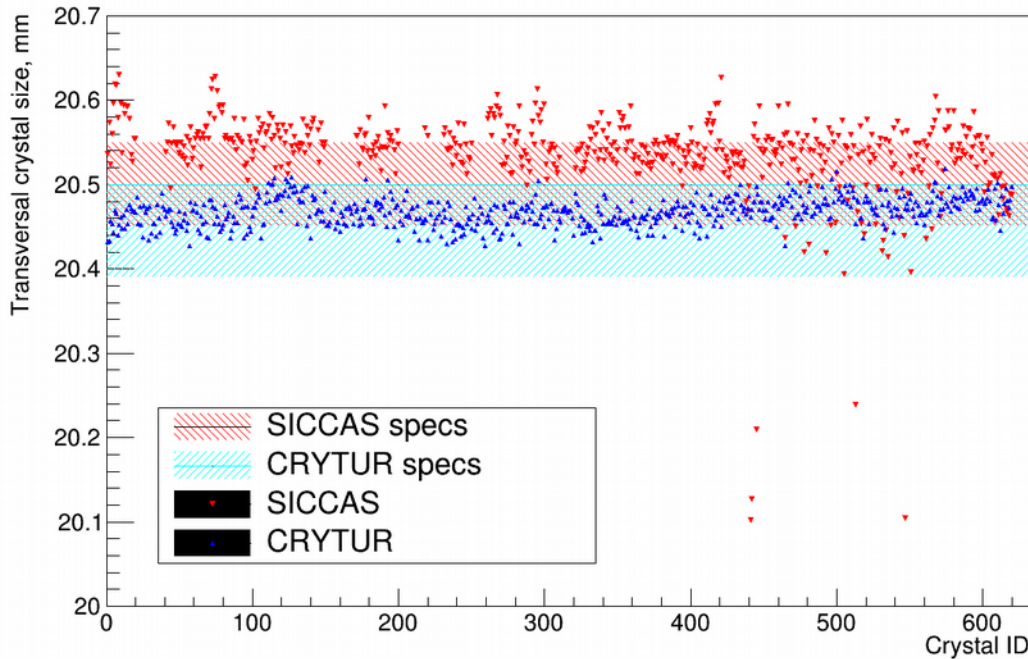
## Visual inspections



Dimension measurements

Internal structure visual inspection with green laser

# Crystals characteristics

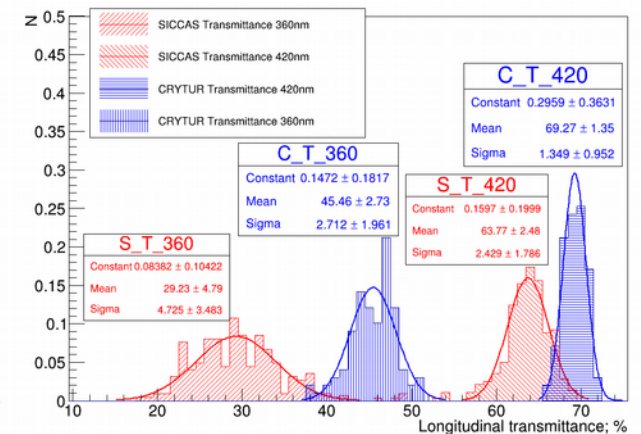
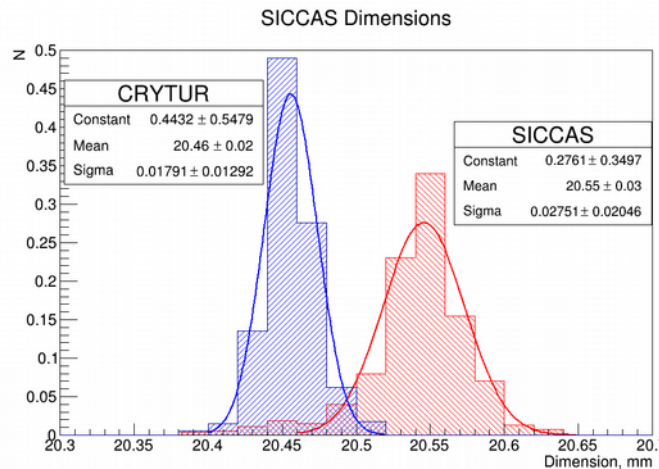
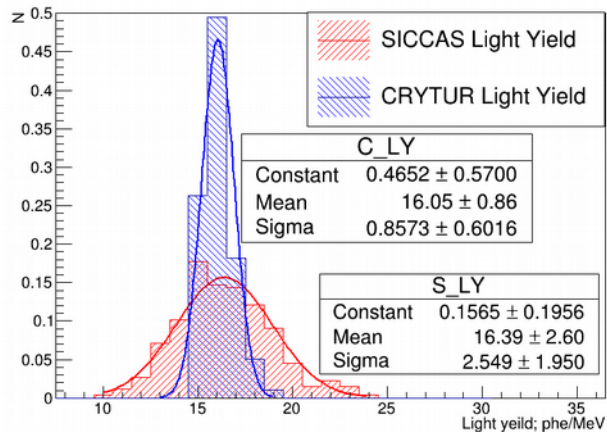


**CRYTUR** crystals are excellent quality

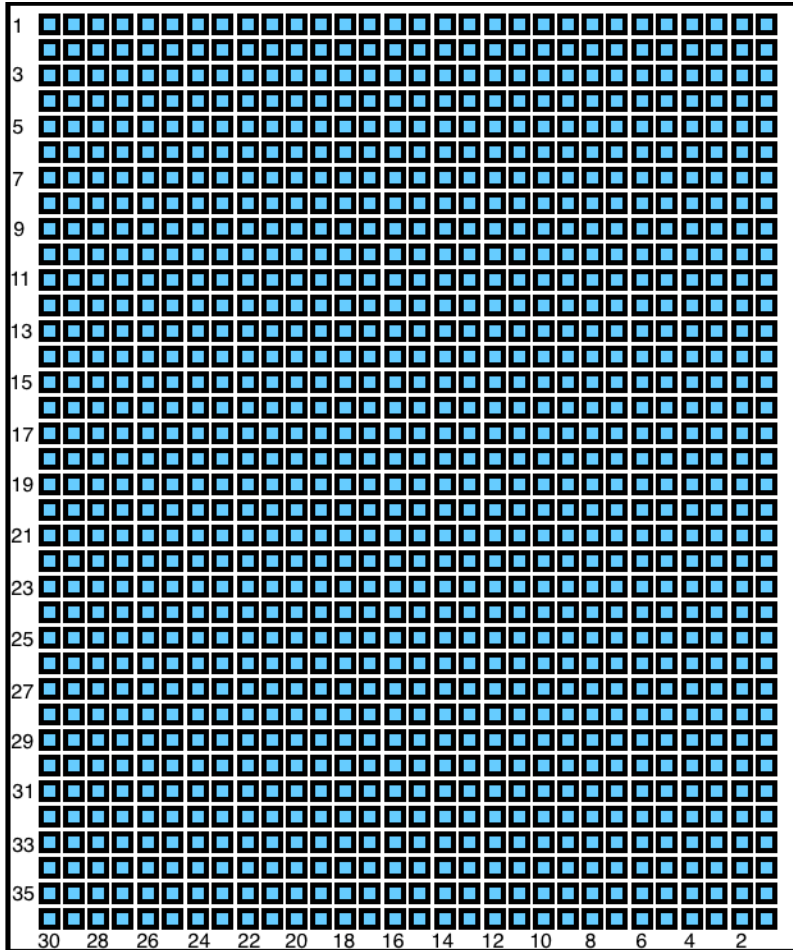
- Rejection rate 0%
- Better Transmittance
- Uniform Light Yield
- Dimensions within specification

**SICCAS** crystals are low medium quality

- Rejection rate 30%
- Worse transmittance compare to CRYTUR
- Nonuniform LY
- Dimensions outside of specification for significant portion of crystals
- Preselection required



# NPS stacking with crystals



- NPS Calorimeter will consist of 1080 crystals, matrix 36x30
- NPS Collaboration decision is to stack NPS with all [CRYTUR](#) crystals
  - Satisfied to quality requirements
  - All crystals have uniform characteristics
  - Radiation hard
  - Crystal selection not needed for stacking
  - Good constant term

# Possible assembly procedure protocols and serial numbers tracking

- Experience gained during CCAL detector assembly
- Tracking of crystals movement from cleanroom to wrapping pre-assembly area
- Note with crystal serial number, initials, date, etc to track pre-assembly modules
- In case of issues it allows to step back and figure out if an issue is person or method dependent
- Protocols can be adjusted for NPS assembly

Crystal movement from cleanroom to wrapping area

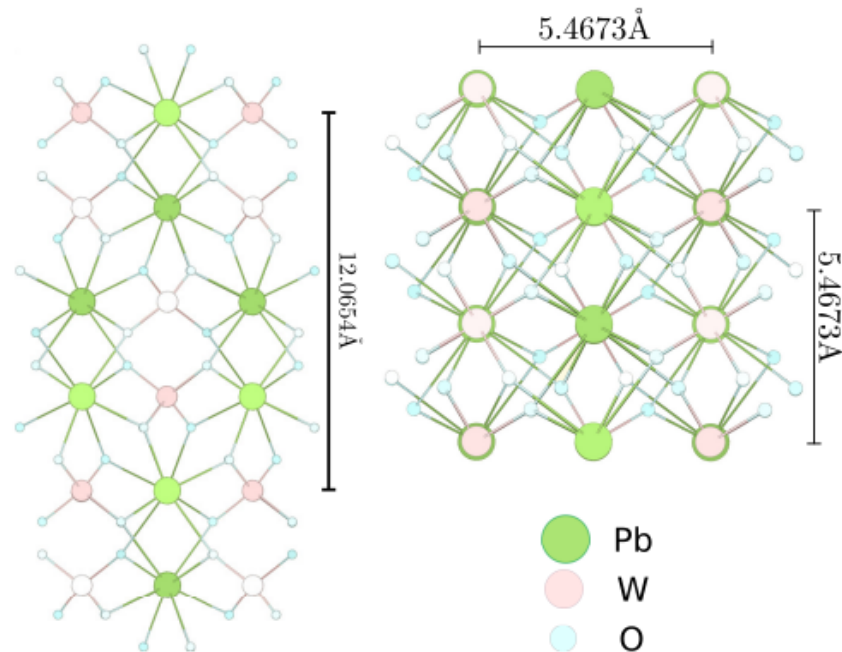
Crystal Number	Box Number	Name of Person Accepted	Date Accepted.
XXXX	Box X-X	John Q. Public	XX/XX/XXXX
5344	B3-3	Vlad	07/20/2018
5346	B3-3	Vlad	07/20/2018
5347	B3-3	Vlad	07/20/2018
5349	B3-3	Vlad	07/20/2018
5255	B2-10	Vlad	07/20/2018
5256	B2-10	Vlad	07/20/2018
5131	B1-14	Vlad	07/20/2018
5132	B1-14	Vlad	07/20/2018
5134	B1-14	Vlad	07/20/2018
5135	B1-14	Vlad	07/20/2018
5136	B1-14	Vlad	07/20/2018
5138	B1-14	Vlad	07/20/2018
5139	B1-14	Vlad	07/20/2018
5140	B1-14	Vlad	07/20/2018
5251	B2-10	Vlad	07/26/2018
5253	B2-10	Vlad	07/26/2018
5255	B2-10	Vlad	07/26/2018
5259	B2-10	Vlad	07/26/2018
5260	B2-10	Vlad	07/26/2018
5151	B1-16	Vlad	07/26/2018
5152	B1-16	Vlad	07/26/2018
5153	B1-16	Vlad	07/26/2018
5154	B1-16	Vlad	07/26/2018
5155	B1-16	Vlad	07/26/2018
5157	B1-16	Vlad	07/26/2018
5158	B1-16	Vlad	07/26/2018
5159	B1-16	Vlad	07/26/2018
5223	B2-7	Vlad	07/26/2018

Tracking of CCAL detector module assembly

Module Number	Crystal Number	PMT Number	Base Number	Initials	Date Assembled
Comp Cal XXX	XXXX	CX XXXX	Base X	X.X.X.	XX/XX/XXXX
Assembly 40	5349	CX6966		H.V.	07/26/18
Assembly 41	5150	CX6967		H.V.	07/26/18
Assembly 42	5218	CX6977		H.V.	07/26/18
Assembly 43	5220	CX6979		H.V.	07/26/18
Assembly 44	5131	CX6980		H.V.	07/26/18
Assembly 45	5132	CX6981		H.V.	07/26/18
Assembly 46	5255	CX6982		H.V.	07/26/18
Assembly 47	5134	CX6969		H.V.	07/26/18
Assembly 48	5135	CX6968		H.V.	07/26/18
Assembly 49	5136	CX6972		H.V.	07/26/18
Assembly 50	5256	CX6974		H.V.	07/26/18
Assembly 51	5138	CX6985		H.V.	07/26/18
Assembly 52	5139	CX7076		H.V.	07/26/18
Assembly 53	5140	CX7077		H.V.	07/26/18
Assembly 54	5149	<del>CX7078</del>	CX7087	DP	07/26/18
Assembly 55	5081	<del>CX7080</del>	CX7088	DP	07/26/18
Assembly 56	5062	CX7073		H.V.	07/26/18
Assembly 57	5064	CX7081		DP	07/26/18
Assembly 58	5066	CX7082		H.V.	07/26/18
Assembly 59	5067	CX7083		DP	07/26/18
Assembly 60	5068	CX7084		H.V.	07/26/18
Assembly 61	5069	CX7085		H.V.	07/26/18
Assembly 62	5070	CX7084		DP	07/26/18
Assembly 63	5223	CX7089		DP	07/27/18
Assembly 64	5225	CX7090		DP	07/27/18
Assembly 65	5226	CX7093		DP	07/27/18
Assembly 66	5228	CX7094		DP	07/27/18
Assembly 67	5230	CX7095		DP	07/27/18
Assembly 68	5241	CX7039		DP	07/27/18

# Summary

- All crystals on site
- Quality assurance is done for all crystals and vendors
- NPS will be stack with CRYTUR crystals
- Assembly protocols (crystals tracking) under development



(a) Crystal Structure of PWO along the long crystal axis. (b) Cross section of PWO crystal structure perpendicular to the long crystal axis.