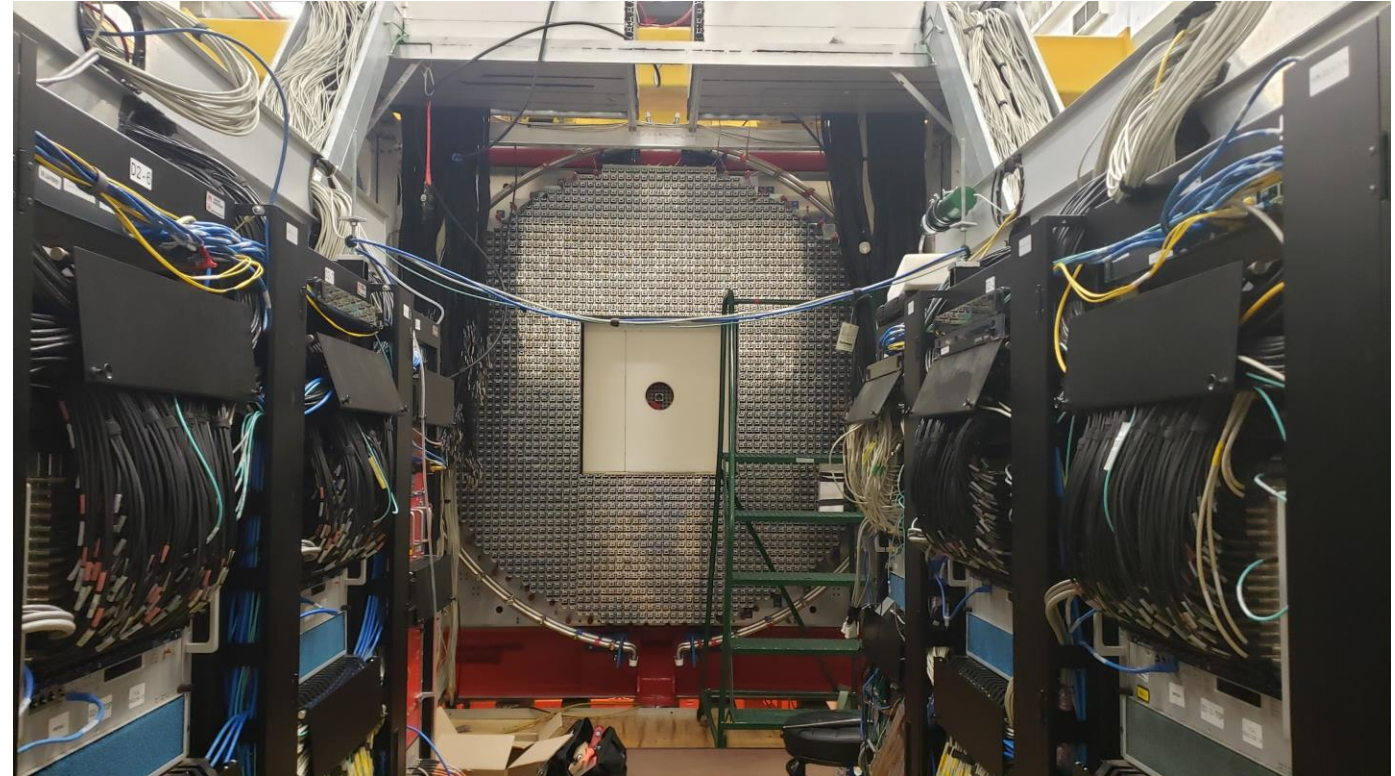
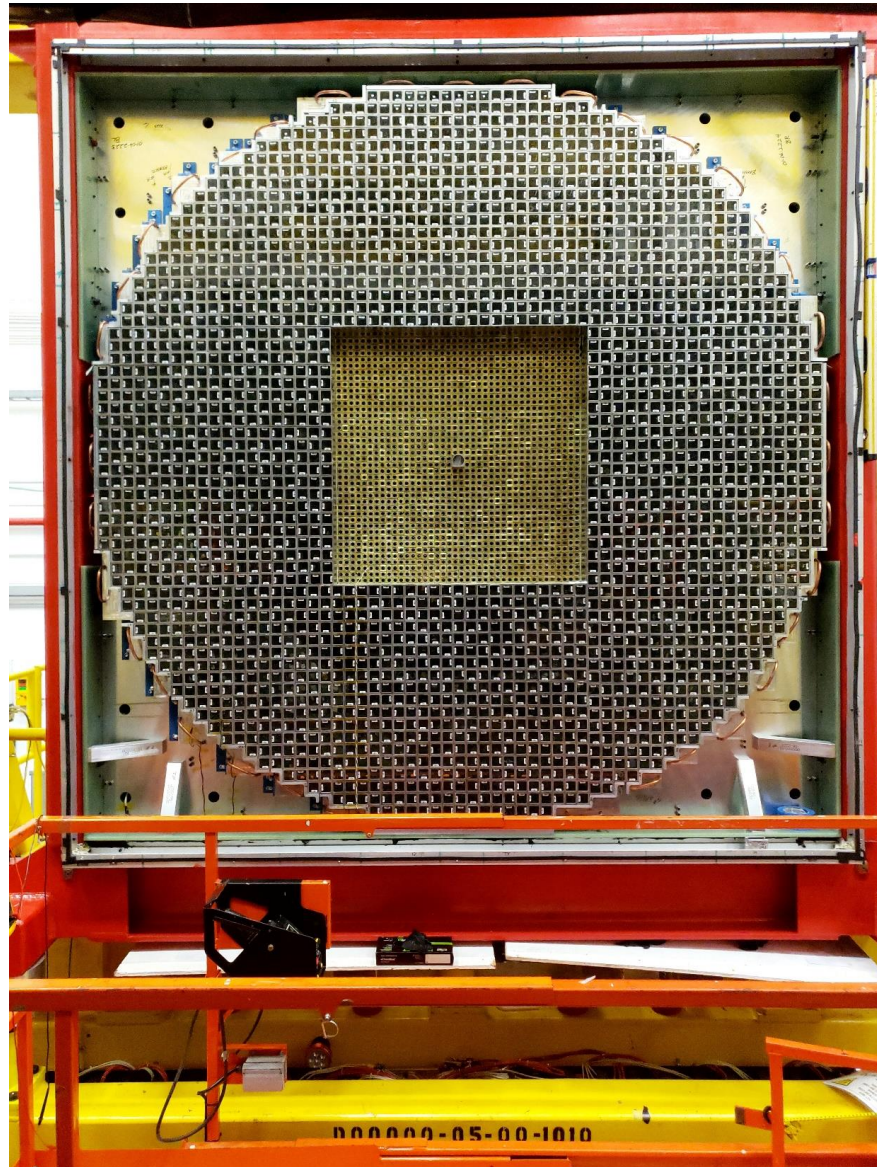


FCAL2 Detector Installed in Hall D



!596 new lead tungstate modules
surrounded by 2360 LG blocks

Project Overview

About 1650 ESR foils have been preshaped by George

- also help with disassembling the Compton Calorimeter and removing plastic caps UV-glued to the face of crystals

Mindy wrapped > 800 SICCAS and CRYTUR crystals and soldered wired to about 200 PMT sockets



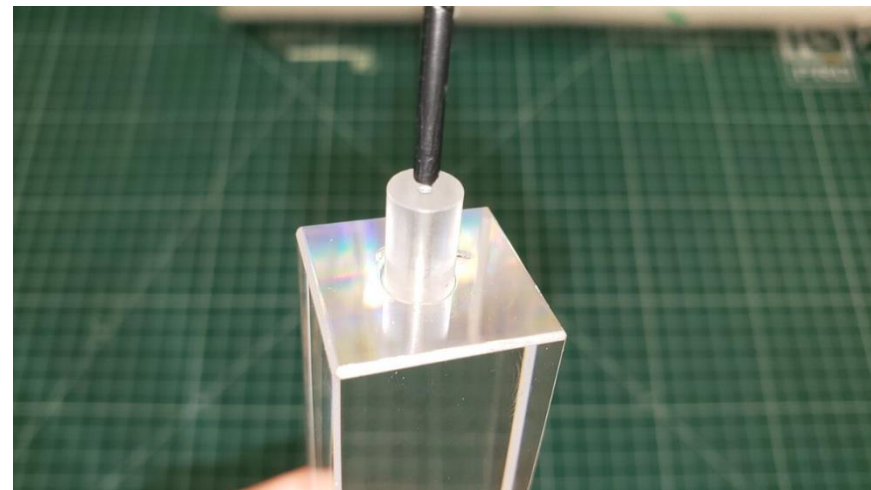
Disassembling CCAL

- Remove CCAL modules from the detector
- Re-use 97 SICCAS crystals from CCAL
- Wrap crystals and fabricate FCAL2 insert modules

CCAL detector on the floor



Removing LMS caps



Project where help would be very appreciated

1. Continue with soldering wires to the PMT sockets

(sockets will be installed to the divider: Chris S., Dave, Armen)

2. Checking PMT dividers:

- we have received all PMT dividers (about 1700)
- need to check all of them after installing sockets

https://halldweb.jlab.org/wiki/index.php/Testing_of_PMT_dividers

https://halldweb.jlab.org/wiki/index.php/Testing_ECAL_modules

(everything is ready to start checking)

3. Gluing optical fibers to the face of each crystal

(can start gluing fibers in January 2024)

