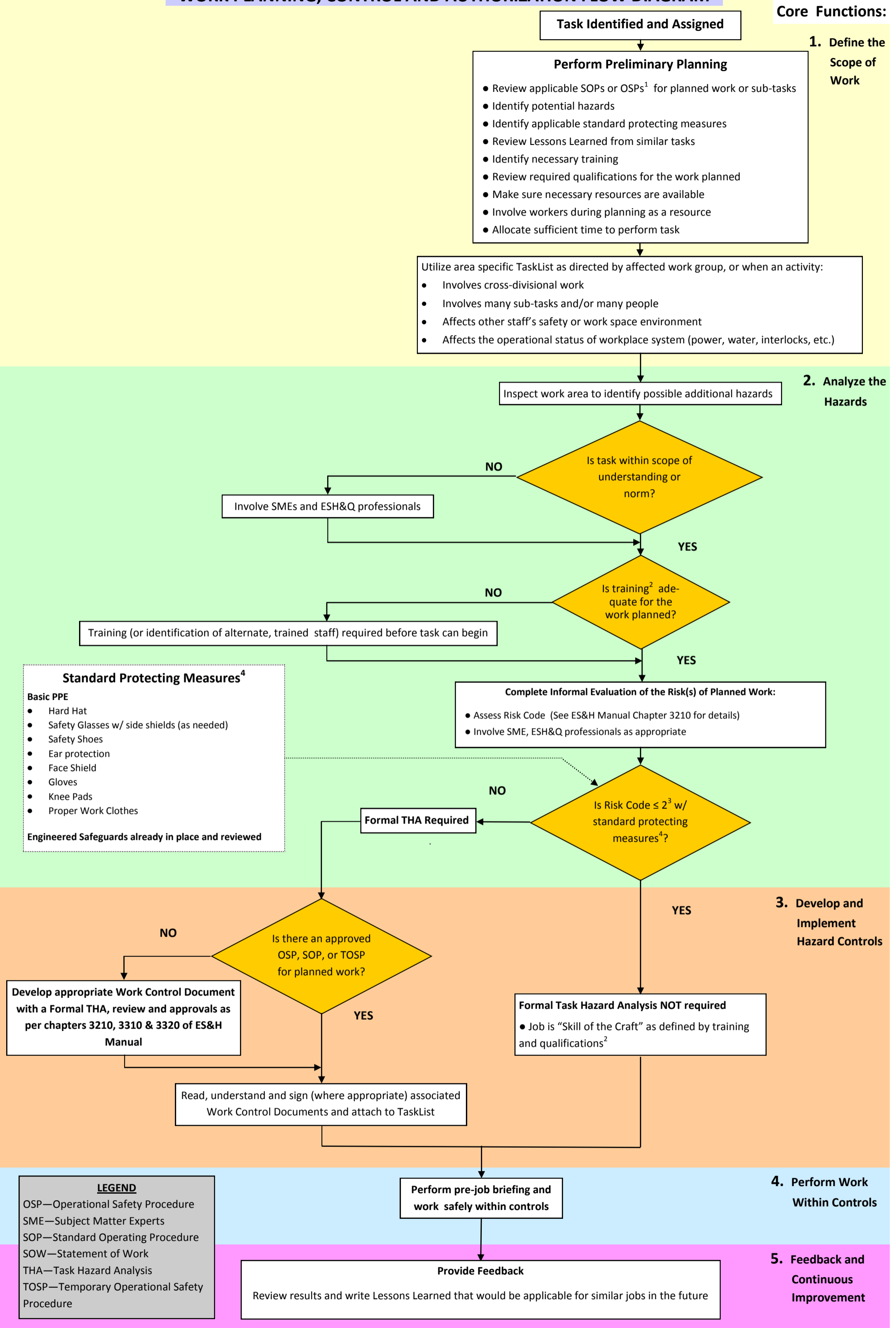


WORK PLANNING, CONTROL AND AUTHORIZATION FLOW DIAGRAM

Core Functions:



1- OSPs and SOPs must be approved and current to be considered valid
 2- Training = Equipment Specific, Area Specific or Functional or Technical Competencies
 3- When RC =2, worker and supervisor will meet to discuss associated hazards before task can begin
 4- As per Chapter 3210 of ES&H Manual