

# Data processing status and offline line monitoring

F.-X. Girod

Jefferson Laboratory

July 11<sup>th</sup> 2018



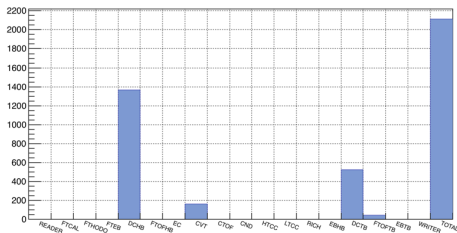
# Cooking status

<b>Software tag</b>	<b>5b.5.1</b>
Calibration run (e in)	4013
Calibration run (e out)	3932
Calibration runs (6 GeV)	3083, 3842
Calibration runs (2 GeV)	2391, 2476, 2587
Timeline (e in) (38 runs, 10 files each)	4013,4014,4015,4016,4017,4018,4020,4021,4022,4025,4026,4027,4028,4030, 4032,4033,4037,4038,4039,4041,4054,4055,4058,4059,4060,4061,4067,4068, 4069,4070,4071,4073,4074,4075,4078,4178,4264,4326
Timeline (e out) (35 runs, 10 files each)	3933,3934,3936,3938,3939,3940,3941,3943,3944,3945,3946,3947,3948,3949, 3950,3951,3953,3954,3957,3958,3959,3961,3963,3964,3965,3967,3968,3969, 3970,3971,3972,3973,3974,3975,3977



# Benchmark performances

Timing benchmark



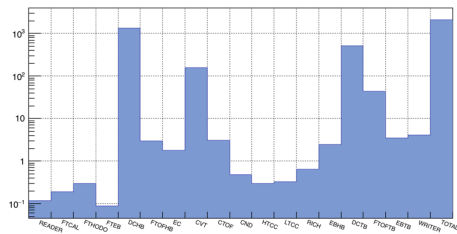
**Run 4013 (10.6 GeV × 50 nA)**  
similar profile for other runs

TOTAL: 2.1s

DCHB: 1.4s

DCTB: 0.5s

Timing benchmark



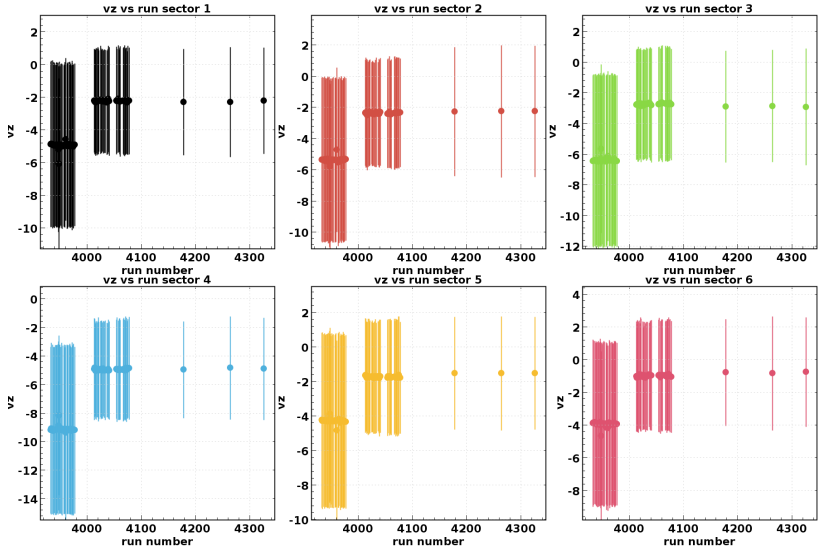
CVT: 0.16s

FTOFTB: 45ms

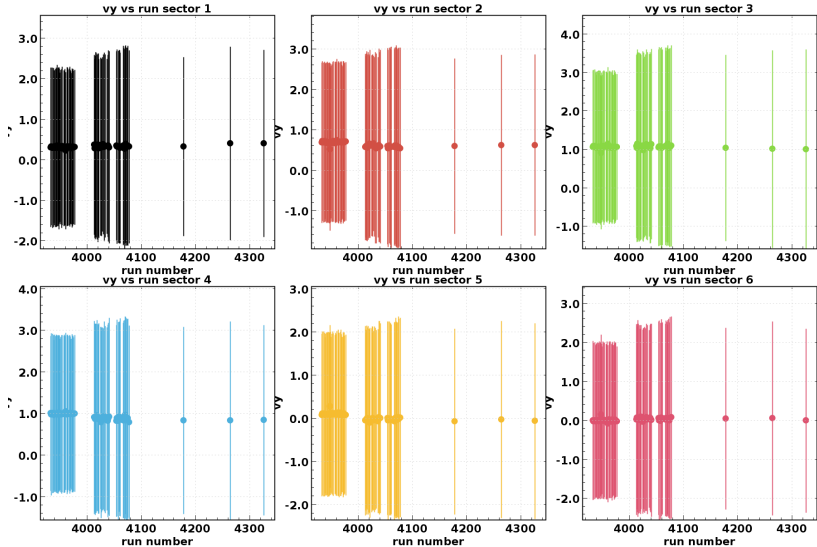
FTOFHB: 3ms



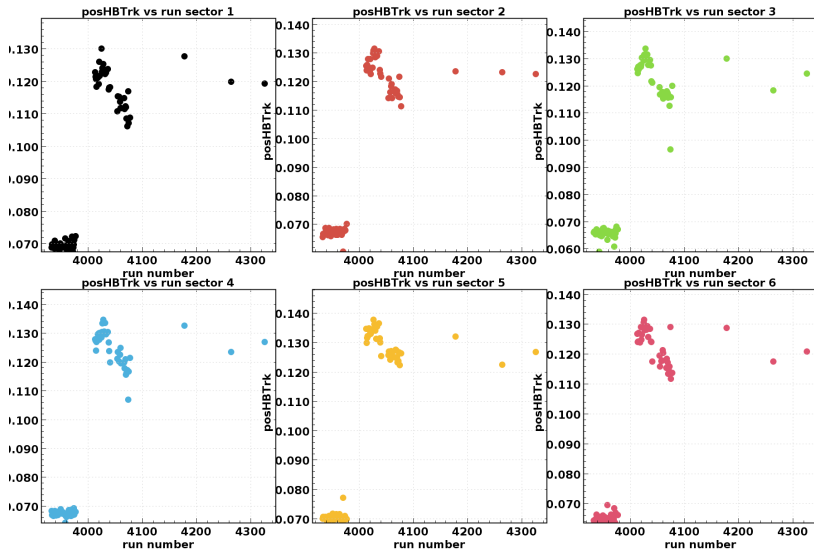
# Timeline monitoring: longitudinal vertex



# Timeline monitoring: transverse vertex



# Timeline monitoring: pos HBT fraction





# Timeline monitoring: HTCC nphe

