

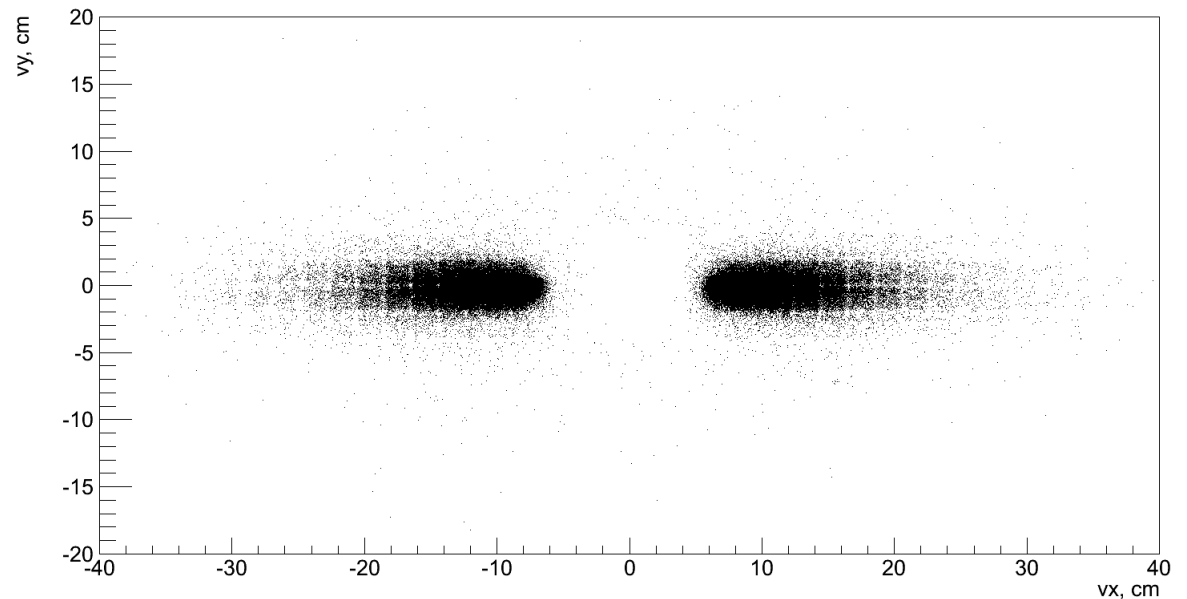
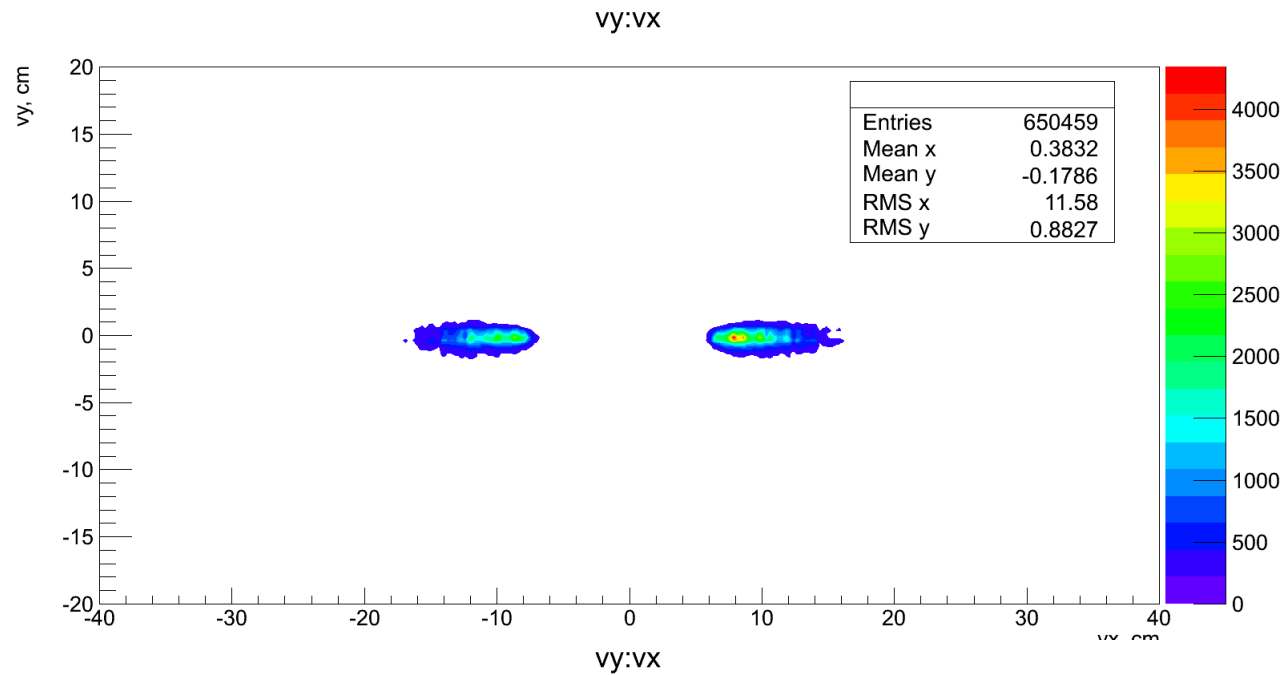
Veto Update

Yang Zhang

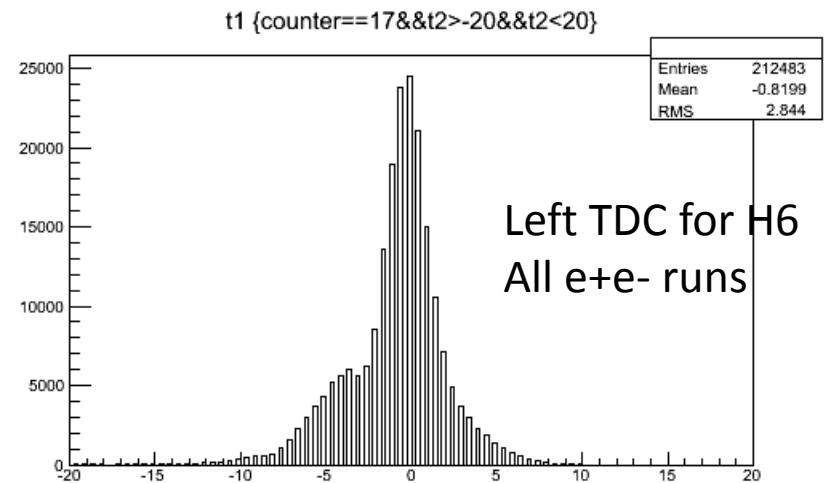
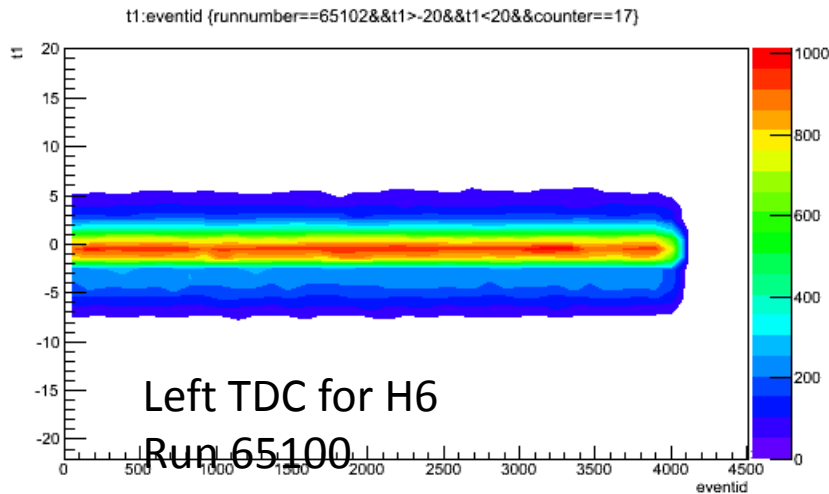
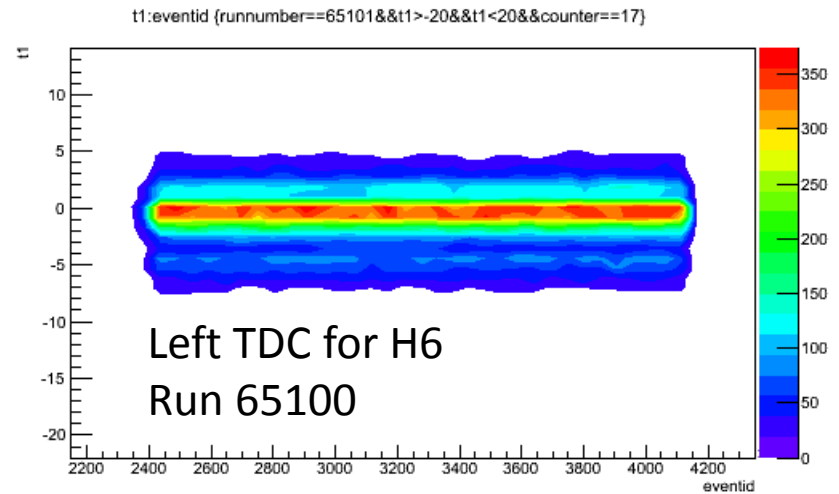
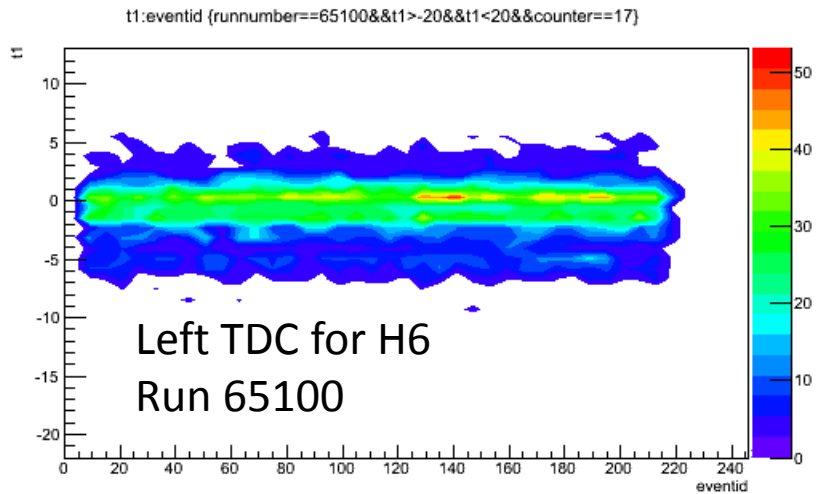
8/17/2012

e+e- runs

- x, y are from HYCAL
- $n_{\text{photon}}, n_{\text{hycal}} = 1$
- $|t_{\text{hycal}} - t_{\text{tagm}}| < 8 \text{ ns}$
- t_1, t_2 tdc on the two sides of veto counter
- $|t_1 - t_2| < 20 \text{ ns}$
- $|(t_1 + t_2) - t_{\text{hycal}}| < 15 \text{ ns}$

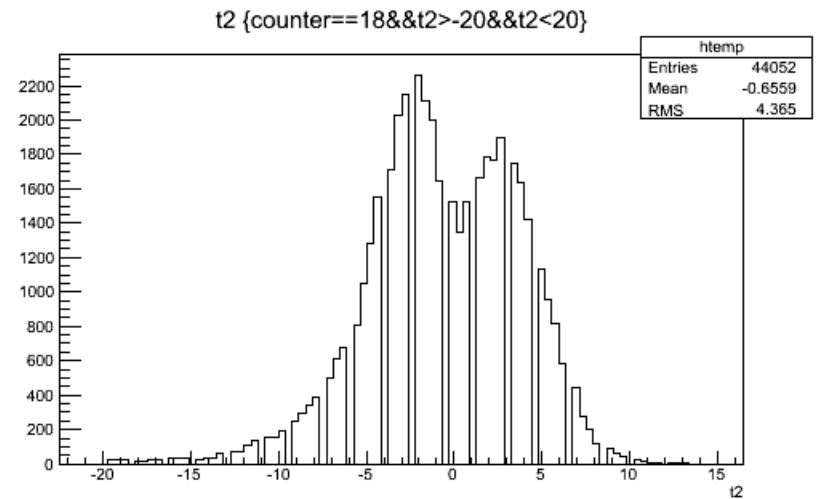
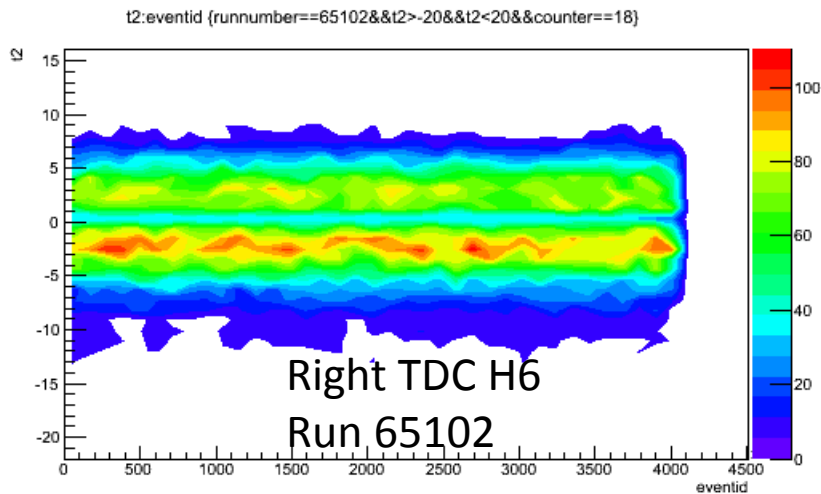
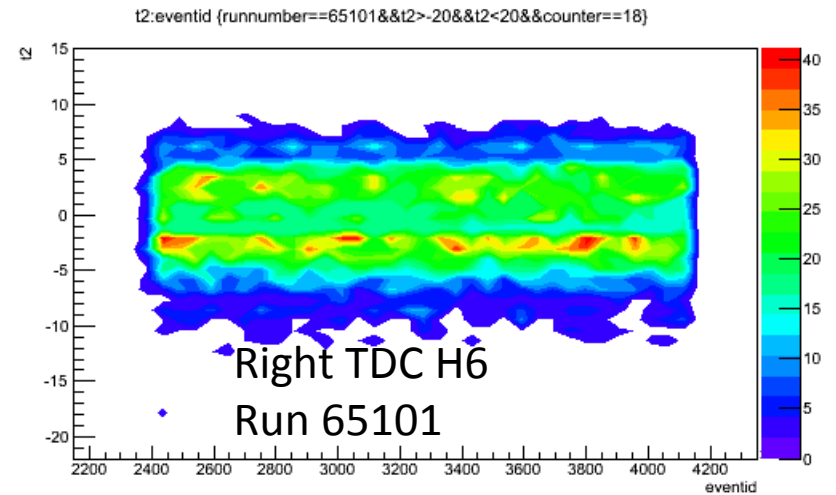
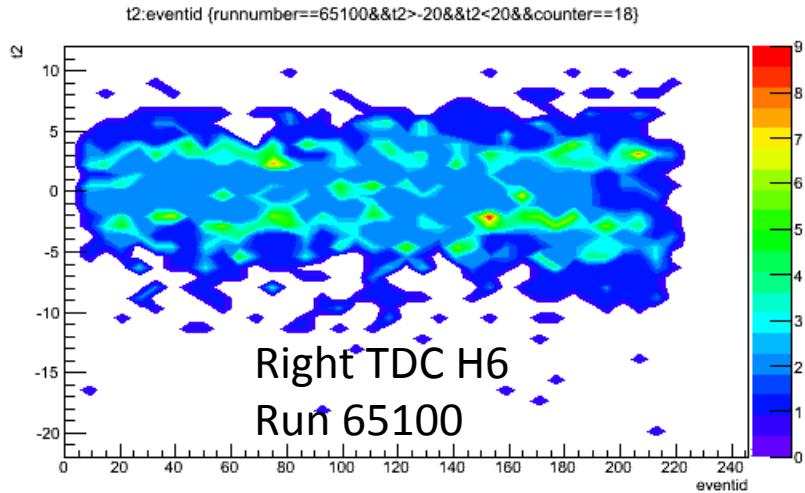


TDC alignment: a good example



H6 is a horizontal counter right above the beam line

TDC alignment: double peaks



Tdiff(t1-t2)

- No obvious relation found
- Why? Bad Tdiff resolution?

