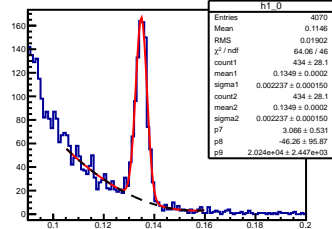
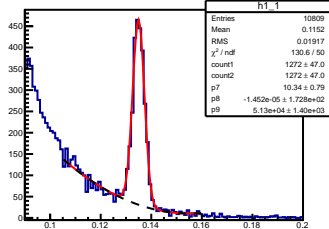
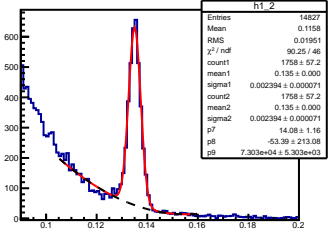
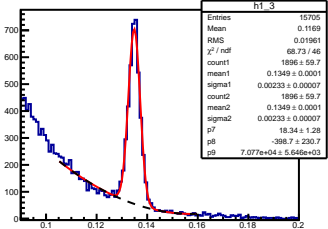
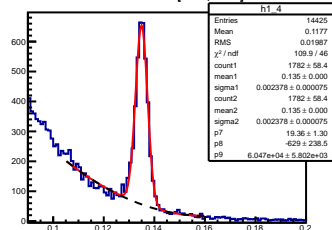
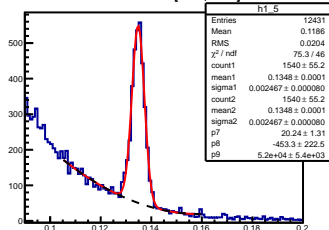
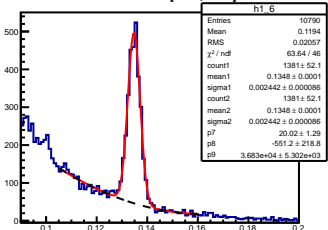
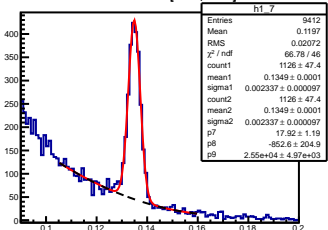
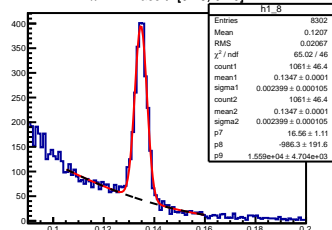
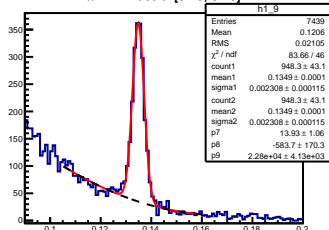
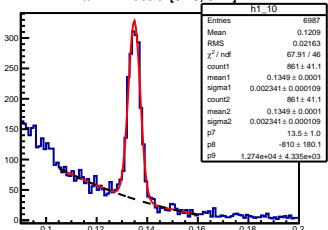
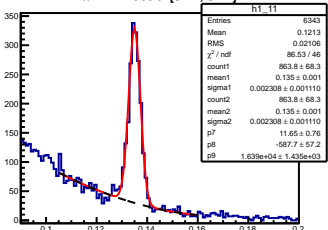
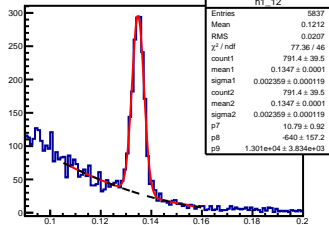
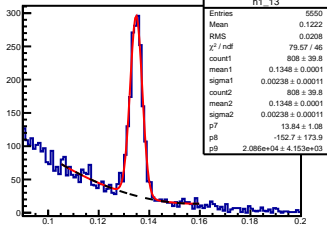
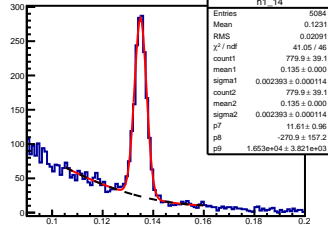
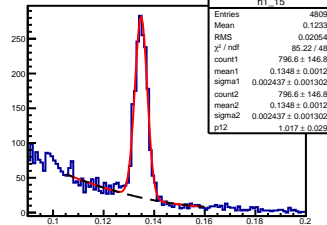
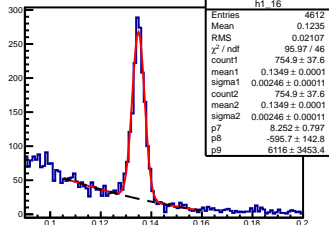
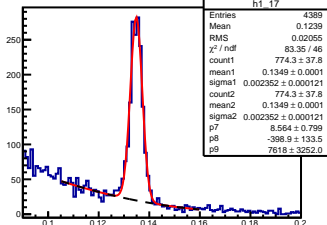
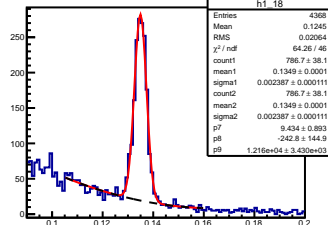
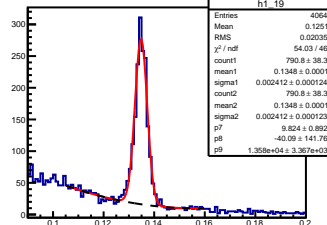
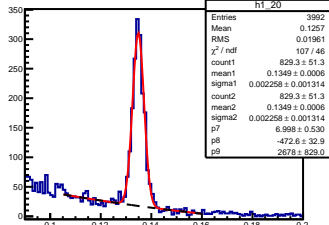
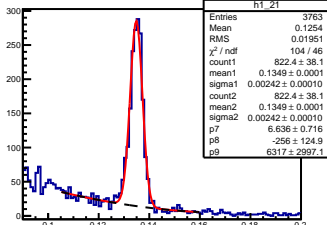
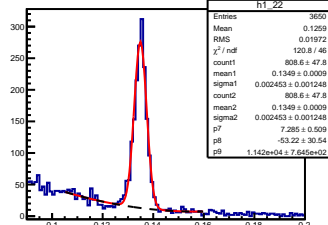
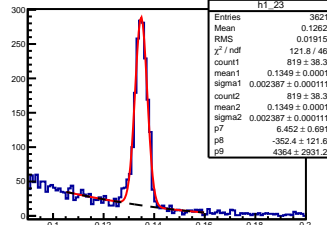
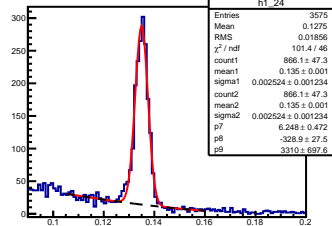
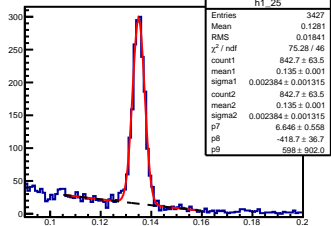
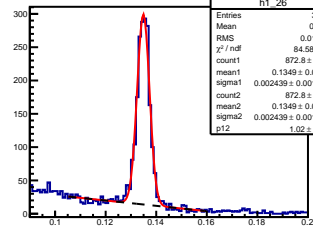
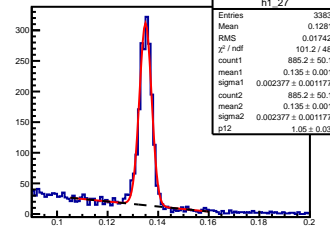
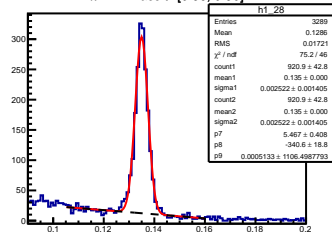
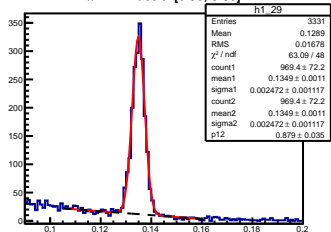
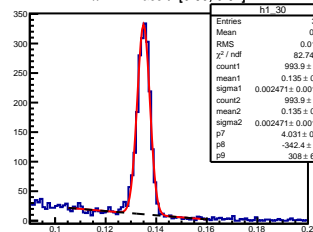
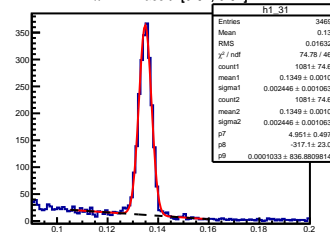
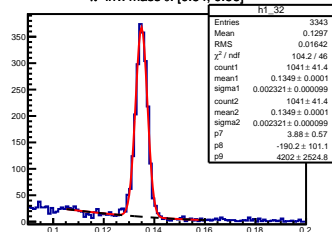
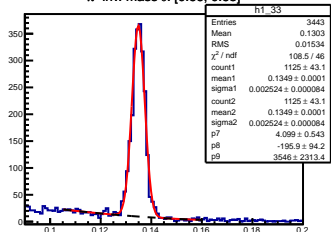
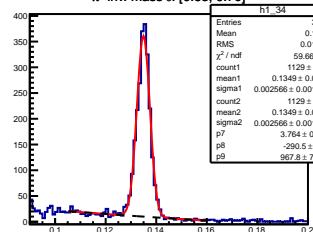
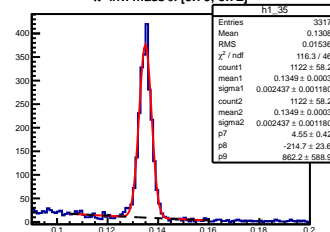
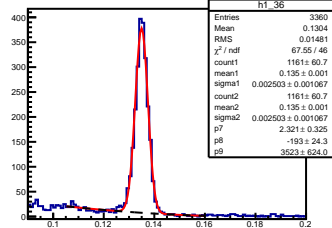
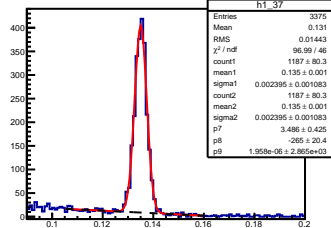
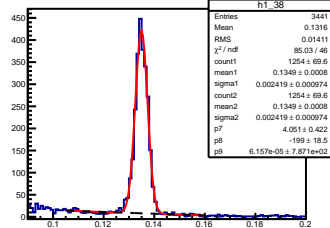
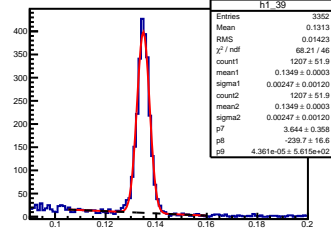
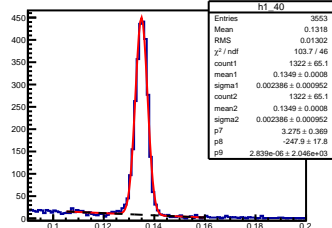
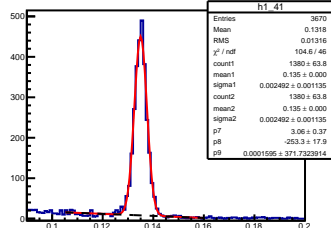
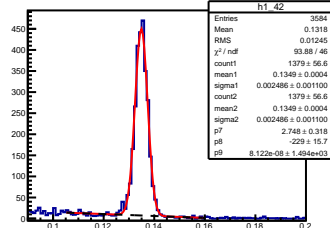
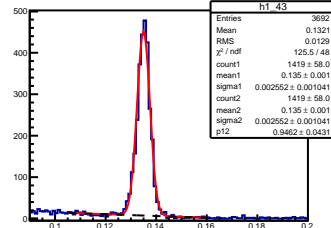
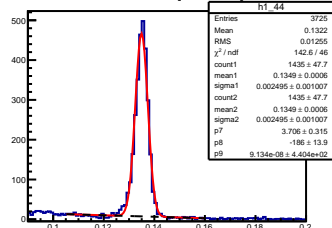
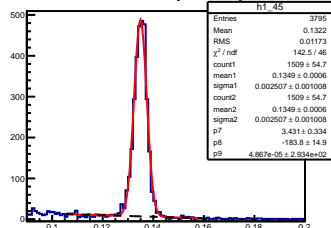
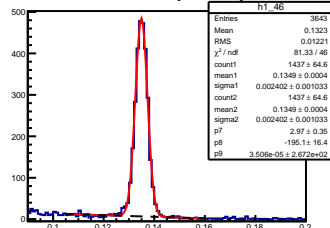
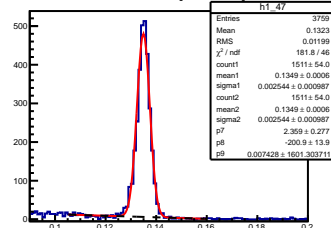
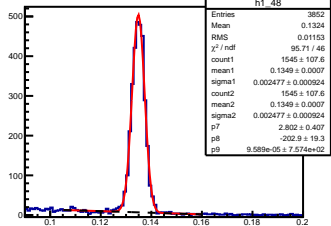
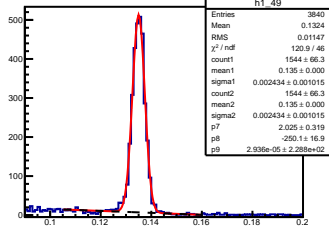
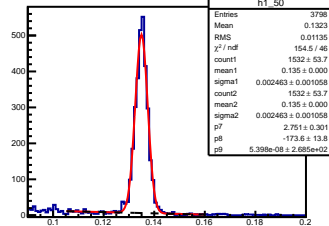
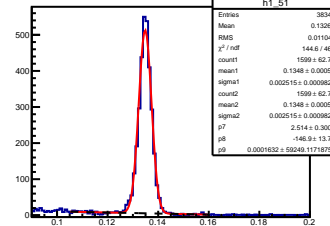
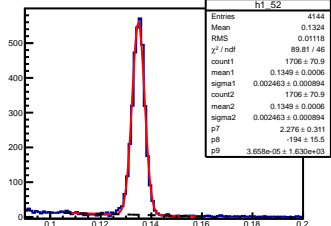
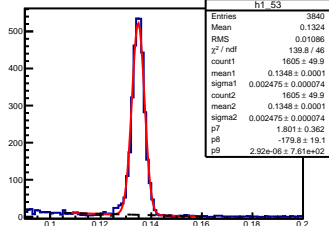
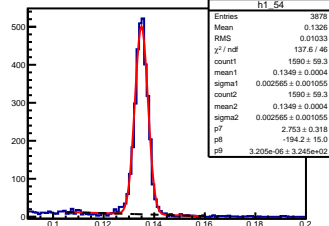
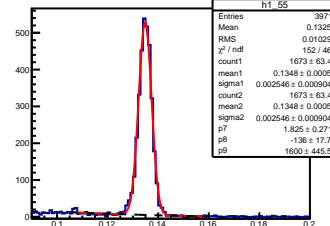
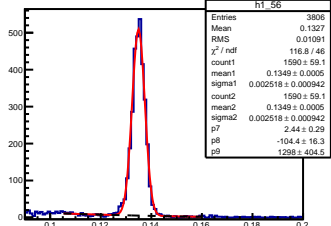
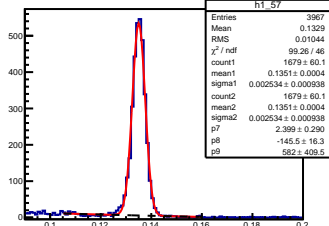
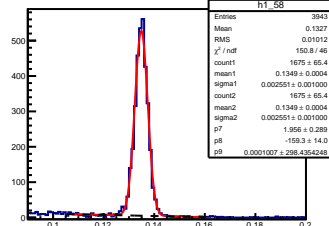
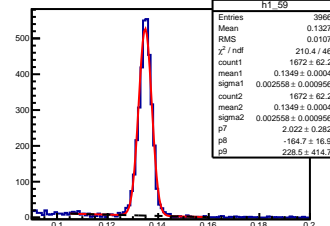


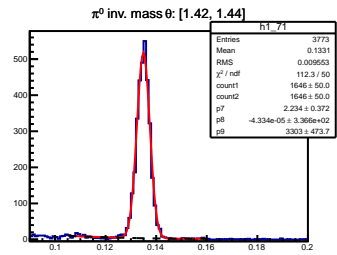
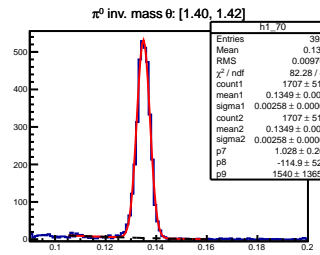
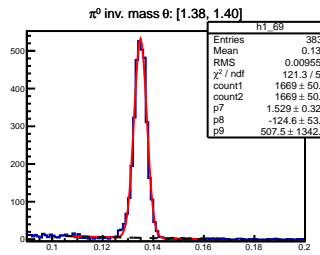
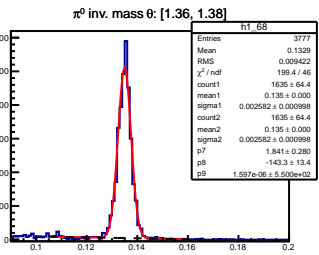
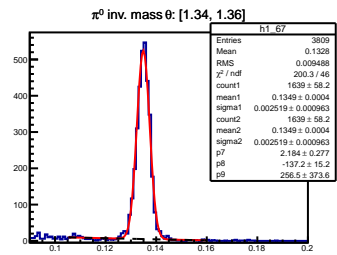
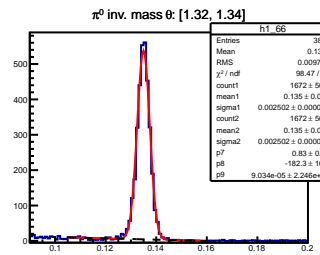
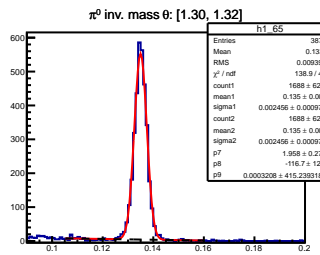
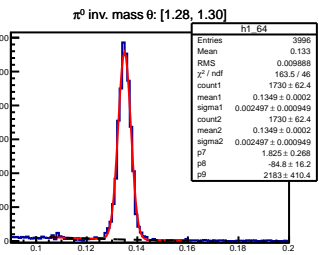
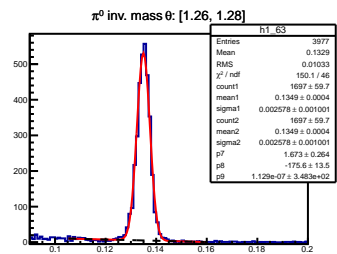
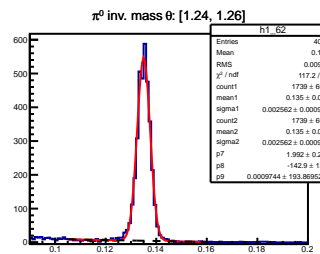
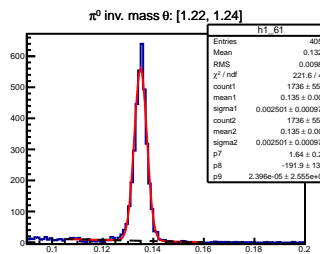
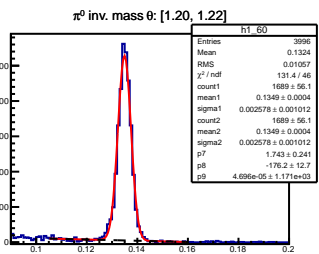
π^0 inv. mass θ : [0.00, 0.02] π^0 inv. mass θ : [0.02, 0.04] π^0 inv. mass θ : [0.04, 0.06] π^0 inv. mass θ : [0.06, 0.08] π^0 inv. mass θ : [0.08, 0.10] π^0 inv. mass θ : [0.10, 0.12] π^0 inv. mass θ : [0.12, 0.14] π^0 inv. mass θ : [0.14, 0.16] π^0 inv. mass θ : [0.16, 0.18] π^0 inv. mass θ : [0.18, 0.20] π^0 inv. mass θ : [0.20, 0.22] π^0 inv. mass θ : [0.22, 0.24]

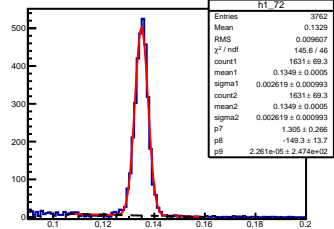
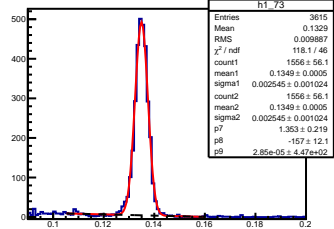
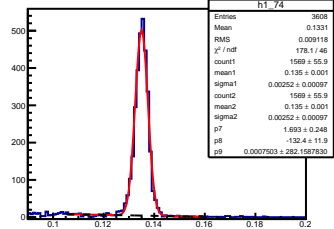
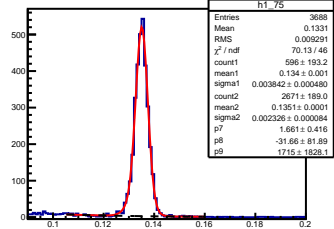
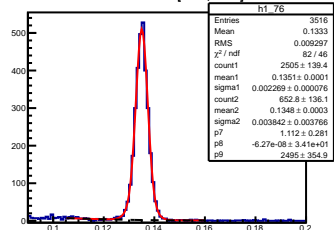
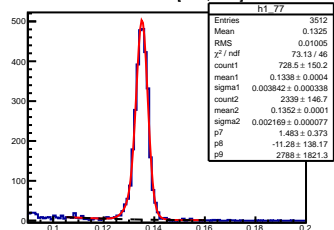
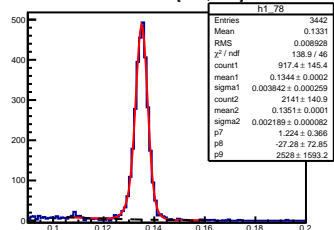
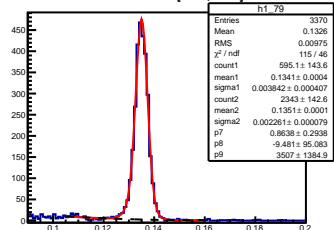
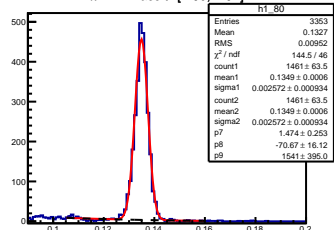
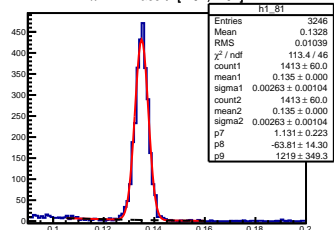
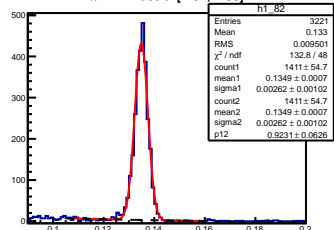
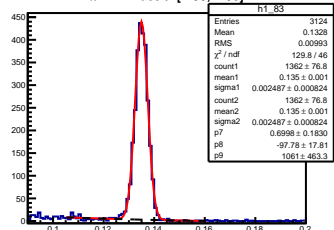
π^0 inv. mass θ : [0.24, 0.26] π^0 inv. mass θ : [0.26, 0.28] π^0 inv. mass θ : [0.28, 0.30] π^0 inv. mass θ : [0.30, 0.32] π^0 inv. mass θ : [0.32, 0.34] π^0 inv. mass θ : [0.34, 0.36] π^0 inv. mass θ : [0.36, 0.38] π^0 inv. mass θ : [0.38, 0.40] π^0 inv. mass θ : [0.40, 0.42] π^0 inv. mass θ : [0.42, 0.44] π^0 inv. mass θ : [0.44, 0.46] π^0 inv. mass θ : [0.46, 0.48]

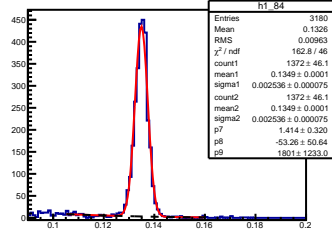
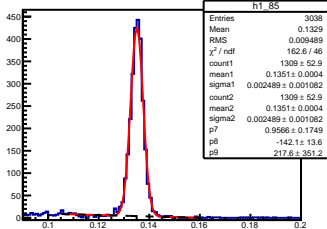
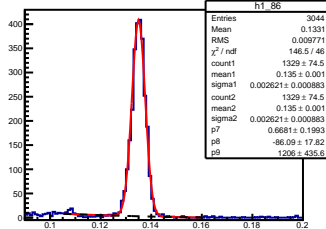
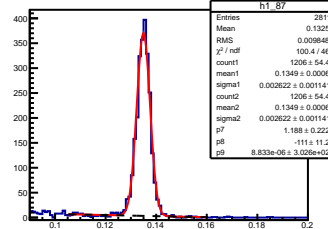
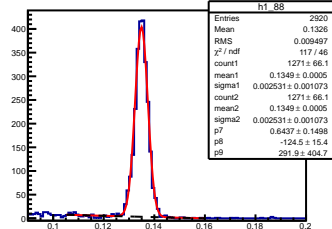
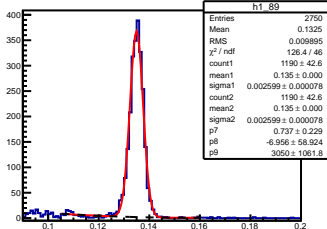
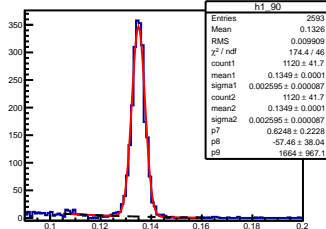
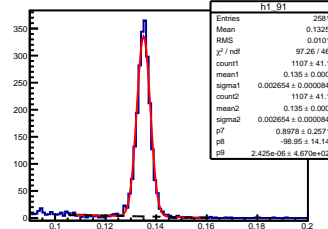
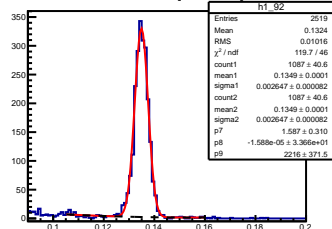
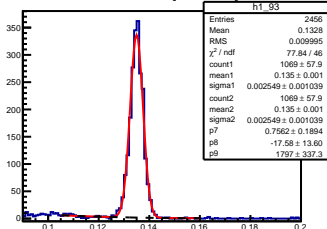
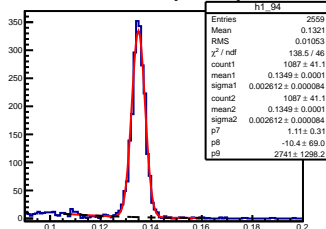
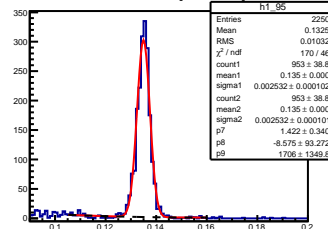
π^0 inv. mass θ : [0.48, 0.50] π^0 inv. mass θ : [0.50, 0.52] π^0 inv. mass θ : [0.52, 0.54] π^0 inv. mass θ : [0.54, 0.56] π^0 inv. mass θ : [0.56, 0.58] π^0 inv. mass θ : [0.58, 0.60] π^0 inv. mass θ : [0.60, 0.62] π^0 inv. mass θ : [0.62, 0.64] π^0 inv. mass θ : [0.64, 0.66] π^0 inv. mass θ : [0.66, 0.68] π^0 inv. mass θ : [0.68, 0.70] π^0 inv. mass θ : [0.70, 0.72]

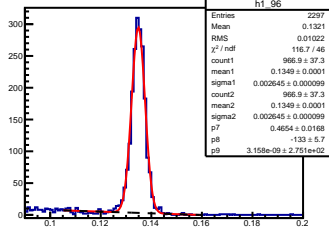
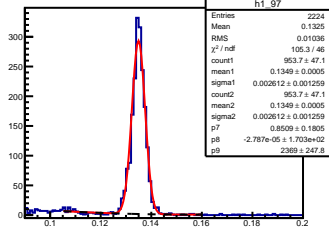
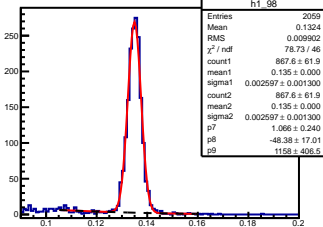
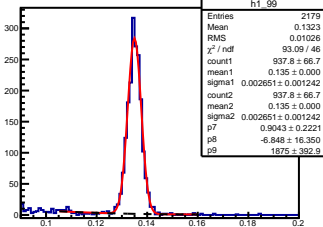
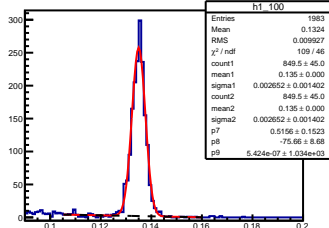
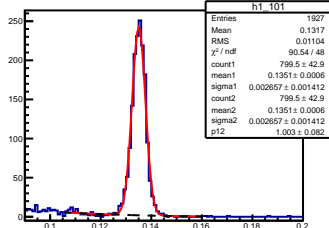
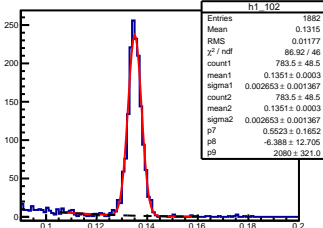
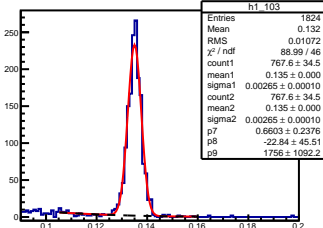
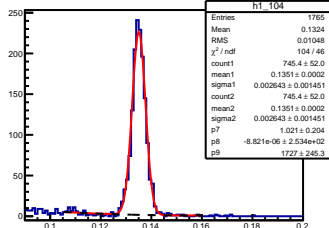
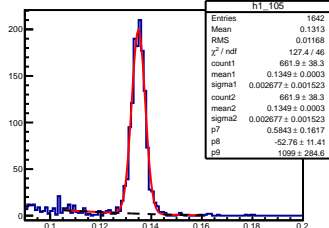
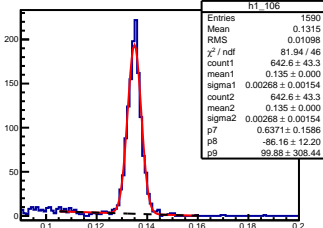
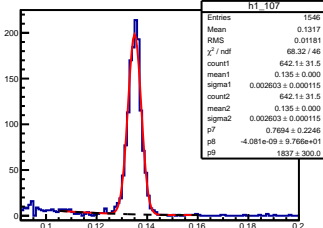
π^0 inv. mass θ : [0.72, 0.74] π^0 inv. mass θ : [0.74, 0.76] π^0 inv. mass θ : [0.76, 0.78] π^0 inv. mass θ : [0.78, 0.80] π^0 inv. mass θ : [0.80, 0.82] π^0 inv. mass θ : [0.82, 0.84] π^0 inv. mass θ : [0.84, 0.86] π^0 inv. mass θ : [0.86, 0.88] π^0 inv. mass θ : [0.88, 0.90] π^0 inv. mass θ : [0.90, 0.92] π^0 inv. mass θ : [0.92, 0.94] π^0 inv. mass θ : [0.94, 0.96]

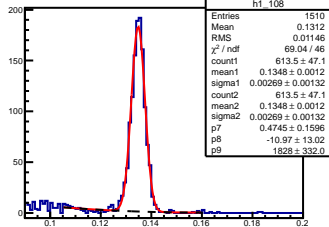
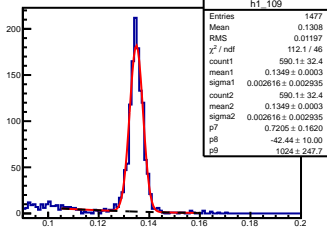
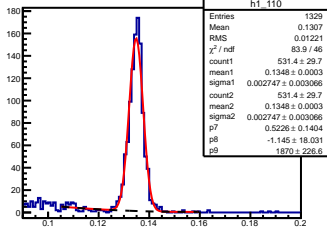
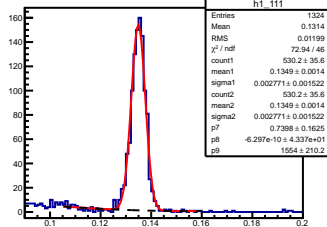
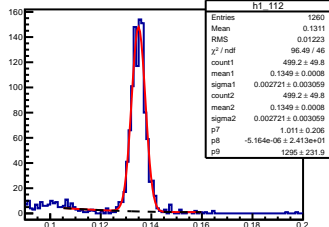
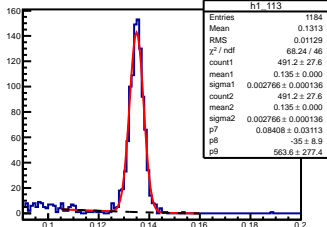
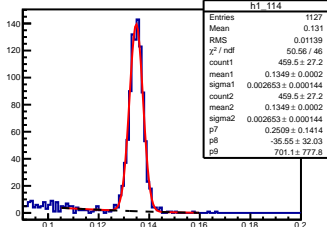
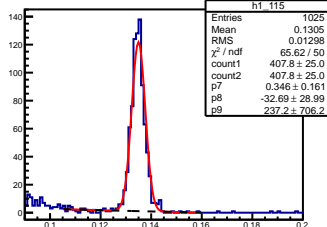
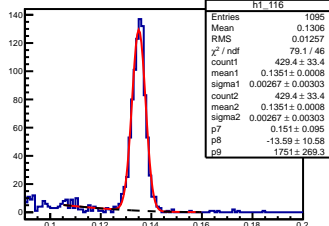
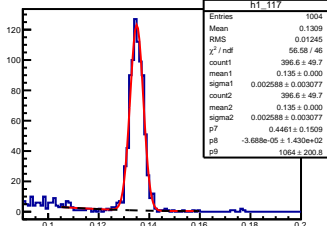
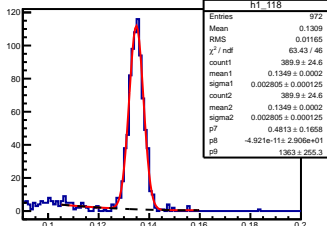
π^0 inv. mass θ : [0.96, 0.98] π^0 inv. mass θ : [0.98, 1.00] π^0 inv. mass θ : [1.00, 1.02] π^0 inv. mass θ : [1.02, 1.04] π^0 inv. mass θ : [1.04, 1.06] π^0 inv. mass θ : [1.06, 1.08] π^0 inv. mass θ : [1.08, 1.10] π^0 inv. mass θ : [1.10, 1.12] π^0 inv. mass θ : [1.12, 1.14] π^0 inv. mass θ : [1.14, 1.16] π^0 inv. mass θ : [1.16, 1.18] π^0 inv. mass θ : [1.18, 1.20]



π^0 inv. mass θ : [1.44, 1.46] π^0 inv. mass θ : [1.46, 1.48] π^0 inv. mass θ : [1.48, 1.50] π^0 inv. mass θ : [1.50, 1.52] π^0 inv. mass θ : [1.52, 1.54] π^0 inv. mass θ : [1.54, 1.56] π^0 inv. mass θ : [1.56, 1.58] π^0 inv. mass θ : [1.58, 1.60] π^0 inv. mass θ : [1.60, 1.62] π^0 inv. mass θ : [1.62, 1.64] π^0 inv. mass θ : [1.64, 1.66] π^0 inv. mass θ : [1.66, 1.68]

π^0 inv. mass θ : [1.68, 1.70] π^0 inv. mass θ : [1.70, 1.72] π^0 inv. mass θ : [1.74, 1.76] π^0 inv. mass θ : [1.74, 1.76] π^0 inv. mass θ : [1.76, 1.78] π^0 inv. mass θ : [1.78, 1.80] π^0 inv. mass θ : [1.80, 1.82] π^0 inv. mass θ : [1.82, 1.84] π^0 inv. mass θ : [1.84, 1.86] π^0 inv. mass θ : [1.86, 1.88] π^0 inv. mass θ : [1.88, 1.90] π^0 inv. mass θ : [1.90, 1.92]

π^0 inv. mass θ : [1.92, 1.94] π^0 inv. mass θ : [1.94, 1.96] π^0 inv. mass θ : [1.96, 1.98] π^0 inv. mass θ : [1.98, 2.00] π^0 inv. mass θ : [2.00, 2.02] π^0 inv. mass θ : [2.02, 2.04] π^0 inv. mass θ : [2.04, 2.06] π^0 inv. mass θ : [2.06, 2.08] π^0 inv. mass θ : [2.08, 2.10] π^0 inv. mass θ : [2.10, 2.12] π^0 inv. mass θ : [2.12, 2.14] π^0 inv. mass θ : [2.14, 2.16]

π^0 inv. mass θ : [2.16, 2.18] π^0 inv. mass θ : [2.18, 2.20] π^0 inv. mass θ : [2.20, 2.22] π^0 inv. mass θ : [2.22, 2.24] π^0 inv. mass θ : [2.24, 2.26] π^0 inv. mass θ : [2.26, 2.28] π^0 inv. mass θ : [2.28, 2.30] π^0 inv. mass θ : [2.30, 2.32] π^0 inv. mass θ : [2.32, 2.34] π^0 inv. mass θ : [2.34, 2.36] π^0 inv. mass θ : [2.36, 2.38] π^0 inv. mass θ : [2.38, 2.40]