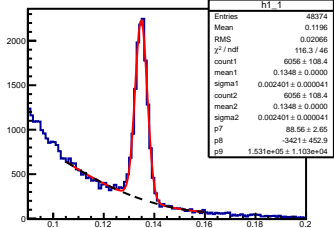
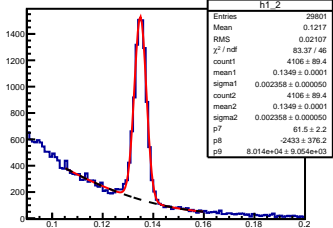
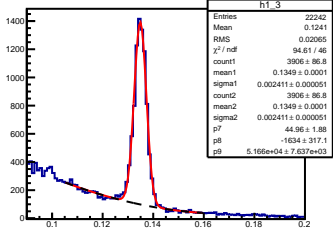
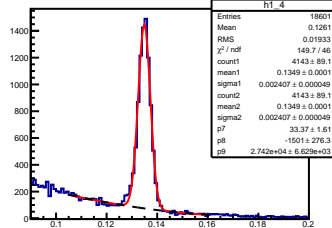
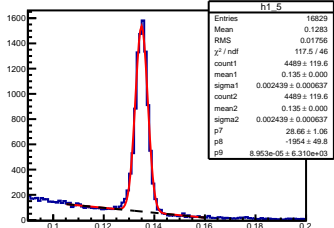
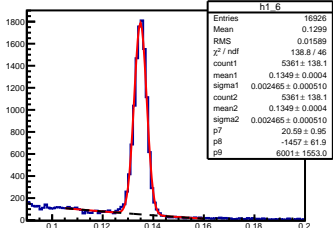
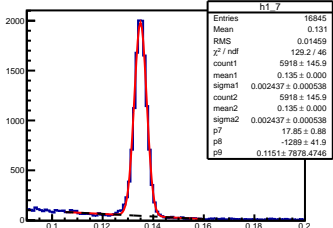
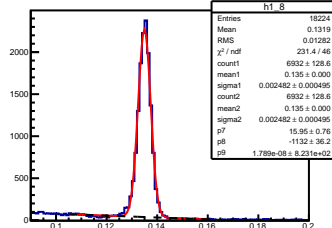
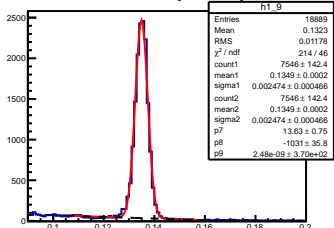
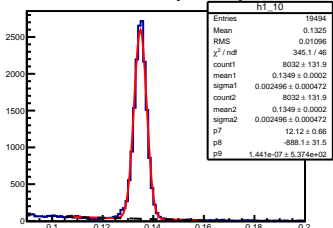
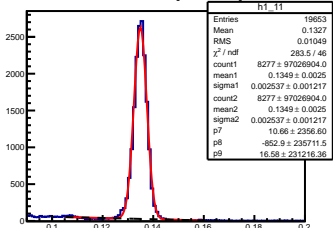
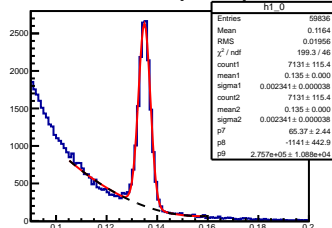
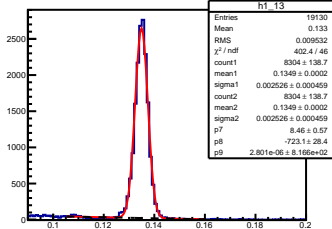
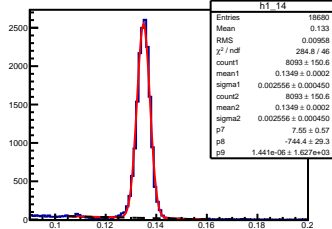
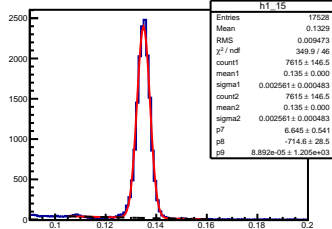
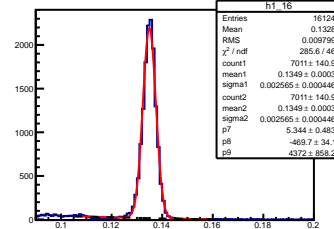
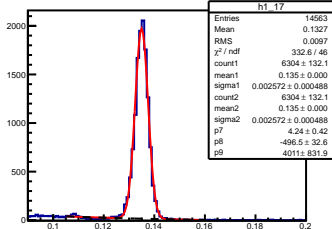
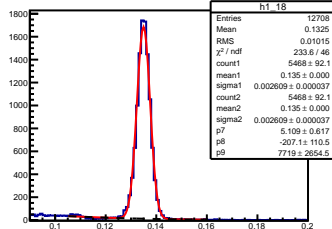
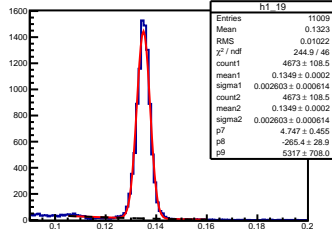
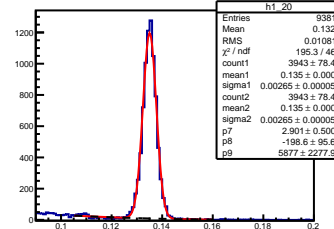
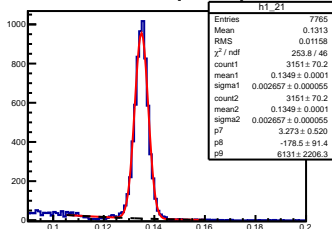
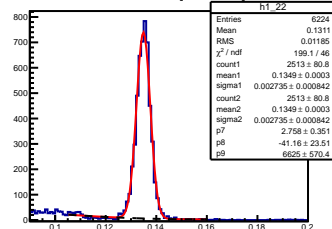
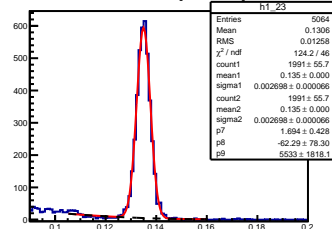


π^0 inv. mass θ : [0.10, 0.20] π^0 inv. mass θ : [0.20, 0.30] π^0 inv. mass θ : [0.30, 0.40] π^0 inv. mass θ : [0.40, 0.50] π^0 inv. mass θ : [0.50, 0.60] π^0 inv. mass θ : [0.60, 0.70] π^0 inv. mass θ : [0.70, 0.80] π^0 inv. mass θ : [0.80, 0.90] π^0 inv. mass θ : [0.90, 1.00] π^0 inv. mass θ : [1.00, 1.10] π^0 inv. mass θ : [1.10, 1.20] π^0 inv. mass θ : [0.00, 0.10]

π^0 inv. mass θ : [1.30, 1.40] π^0 inv. mass θ : [1.40, 1.50] π^0 inv. mass θ : [1.50, 1.60] π^0 inv. mass θ : [1.60, 1.70] π^0 inv. mass θ : [1.70, 1.80] π^0 inv. mass θ : [1.80, 1.90] π^0 inv. mass θ : [1.90, 2.00] π^0 inv. mass θ : [2.00, 2.10] π^0 inv. mass θ : [2.10, 2.20] π^0 inv. mass θ : [2.20, 2.30] π^0 inv. mass θ : [2.30, 2.40] π^0 inv. mass θ : [1.20, 1.30]