

# DSG Moller

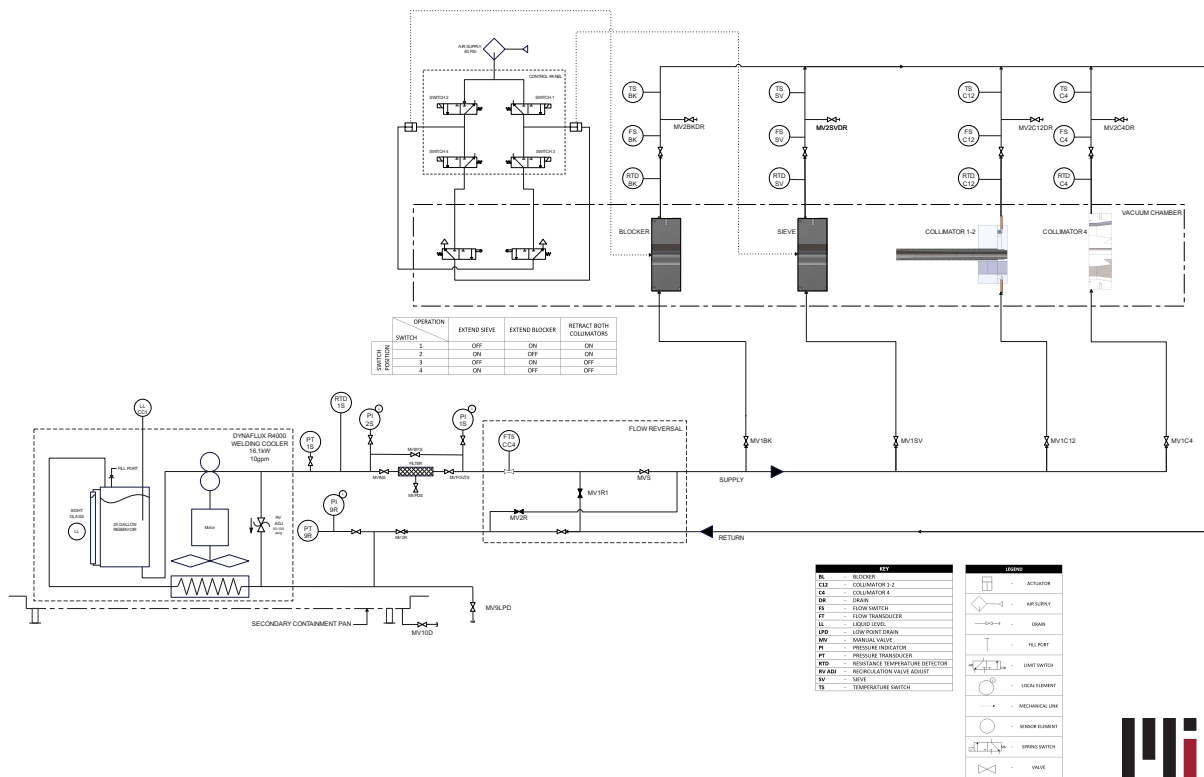
Date: 05/03/2023

Time: 11:00 – 12:00

Attendees: Mary Ann Antonioli, Peter Bonneau, Aaron Brown, Pablo Campero, Brian Eng, Tyler Lemon, Marc McMullen

## 1. Upstream Torus Instrumentation

1. Received P&I diagram from MIT for some upstream components—blocker, sieve, collimators 1, 2, 4—but no magnet



## 2. LCW P&I Diagram

Kaiyi Hall, Brian Eng

1. Drawing 106 for closed loop cooler has been removed
2. PR submitted for vortex flowmeters to be used in prototype test and, unless there are major issues, the final system
  - Needed to change companies from Automation Direct to Dwyer; previously selected flowmeters have a pressure limit of only 147 psi, while Hall LCW is 250 psi

## 3. VT Wiring Diagram

Kaiyi Hall, Brian Eng

1. On hold while prototype P&I diagram is being done