

DSG Moller

Date: 01/03/2024

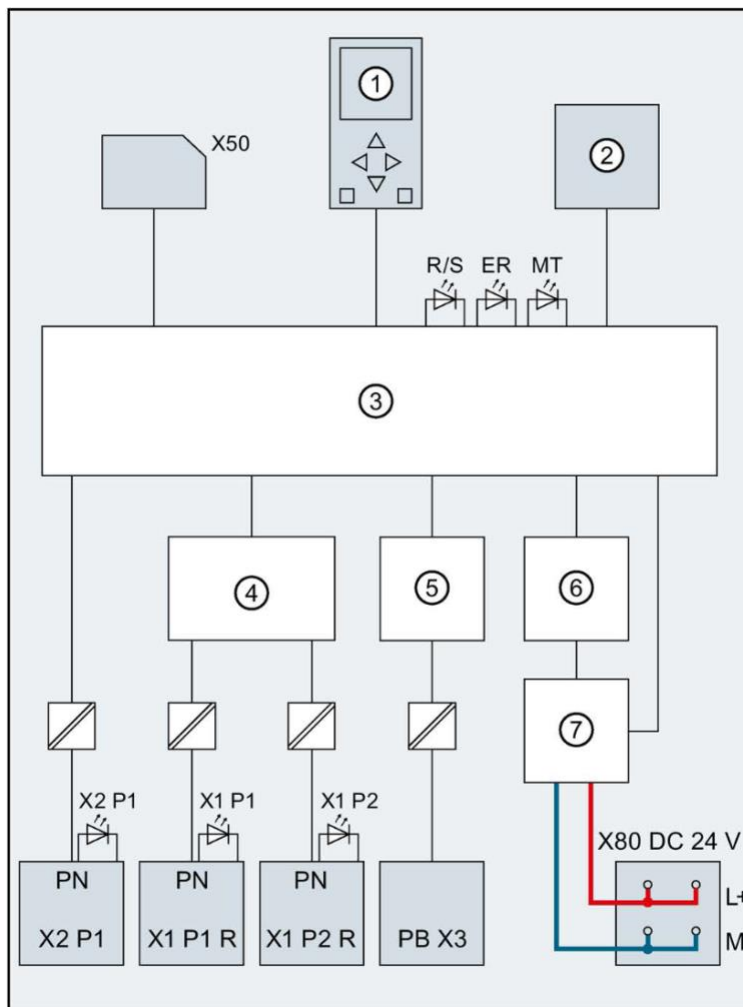
Time: 11:00 – 12:00

Attendees: Peter Bonneau, Brian Eng, Tyler Lemon, Marc McMullen

1. Test Lab Setup

Brian Eng, Kaiyi Hall, Dave Kashy

1. Networking for PLC completed (ha-moller-plc.jlab.org, .37.11 on EEL subnet)
 - Needed to put X2 port on JLab network, as X1 port has internal switch which was changing MAC addresses and causing issues with the JLab switch

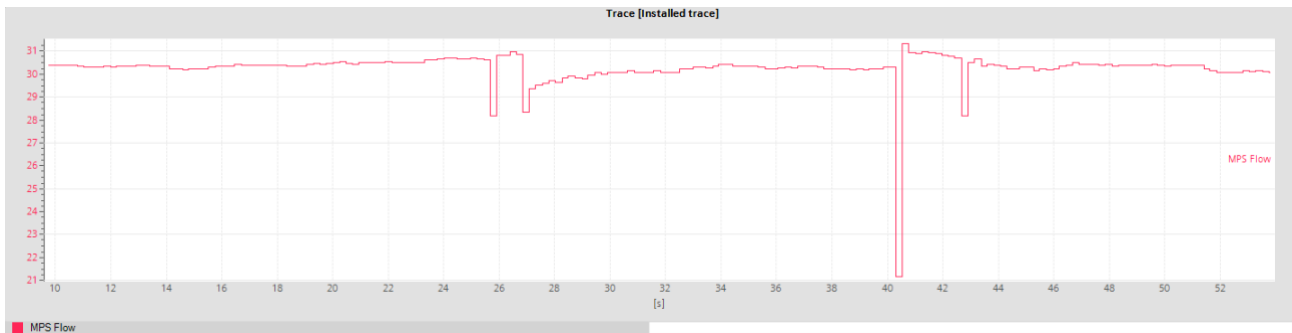


Block Diagram of 1517-3 PN/DP CPU (4 is the internal switch)

2. Tested Dwyer CT6-M1T1C1 flowmeter with LCW panel
 - Found that the top flowmeter (currently configured for MPS) has unstable readings, middle flowmeter (for magnet) had no issues
 - Dave will add air breather vent on a T fitting to see if that alleviates issues; manual says that flowmeter should not be at highest point in system



LCW Panel currently configured to test top MPS flowmeter

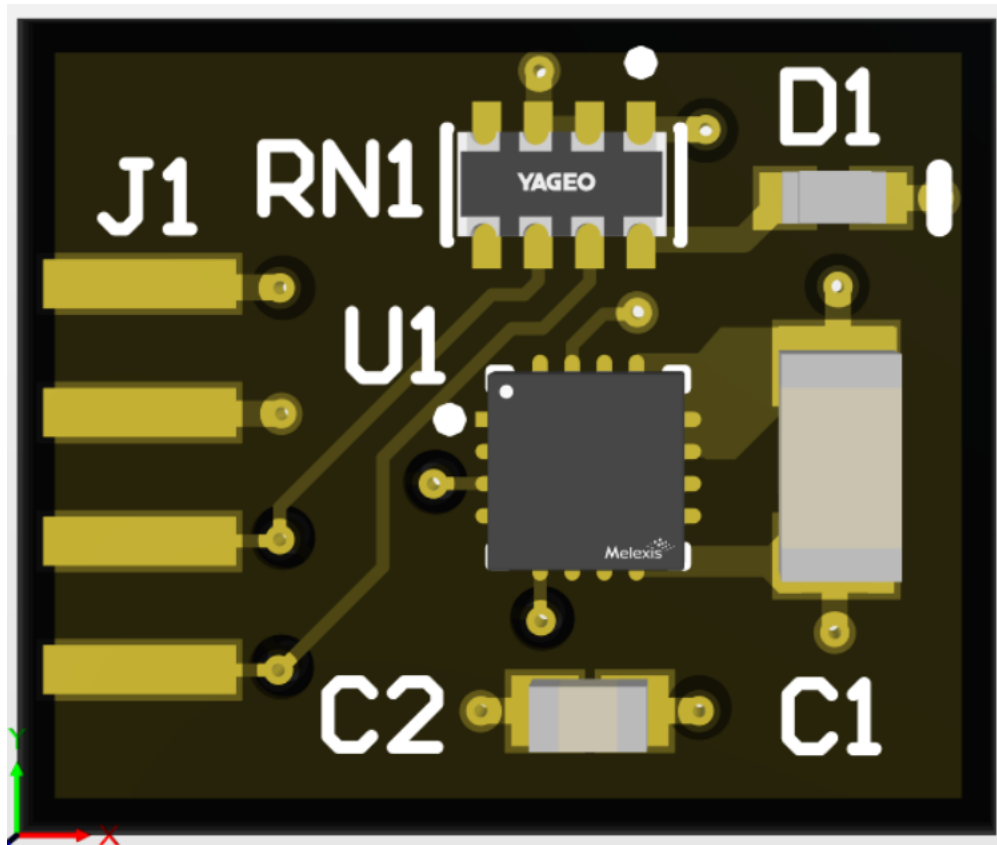


Flow trace from PLC showing unstable reading, which matches LCD display on sensor. Independent local flowmeter showed no fluctuations.

2. Magnet Mapping

Brian Eng, Marc McMullen

1. Completed first draft of miniaturization of Adafruit MLX90393 development board (0.6" x 0.5")
 - Existing board measures (1.0" x 0.7")



Altium 3D rendering of new, smaller PCB