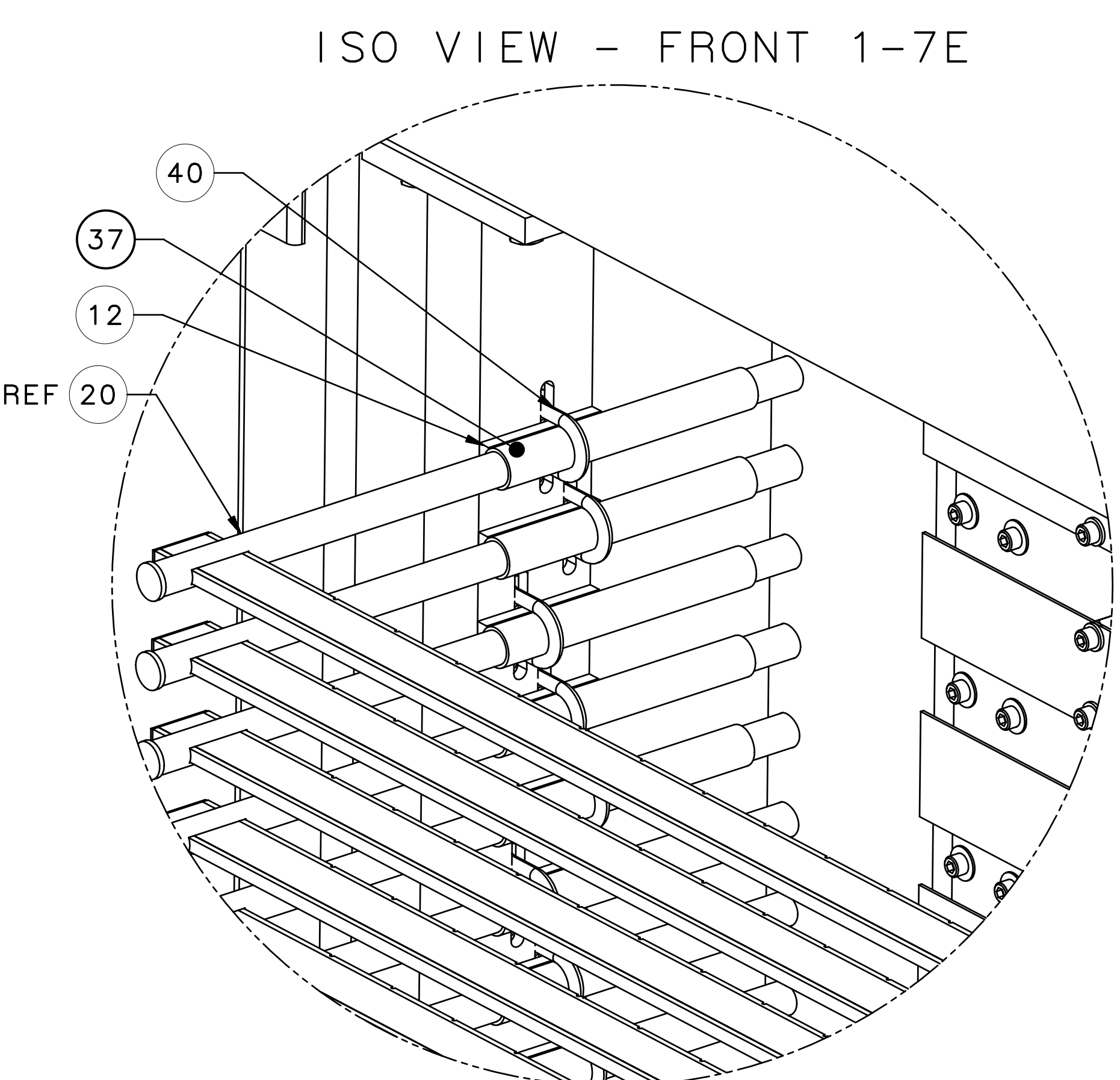
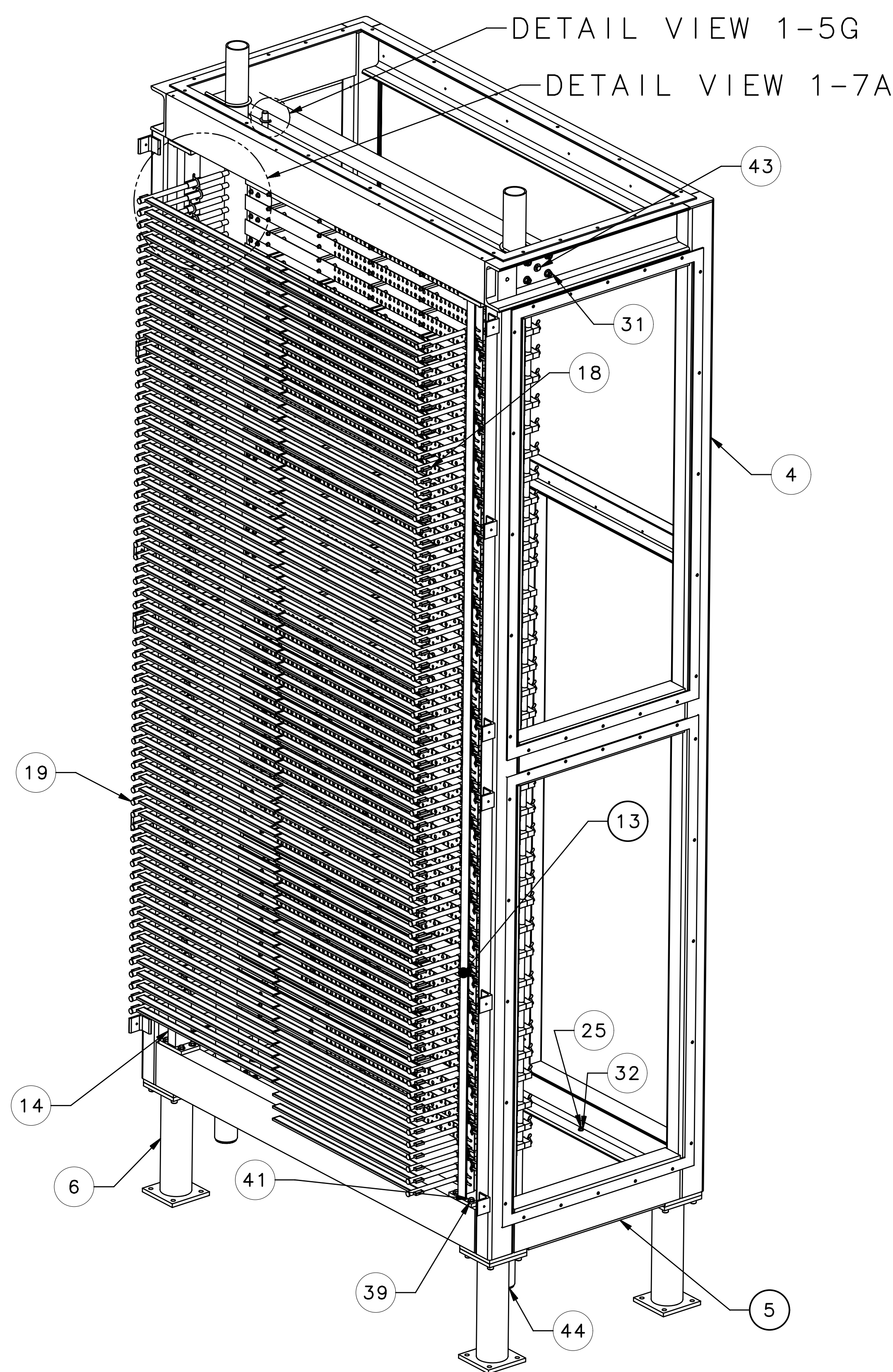
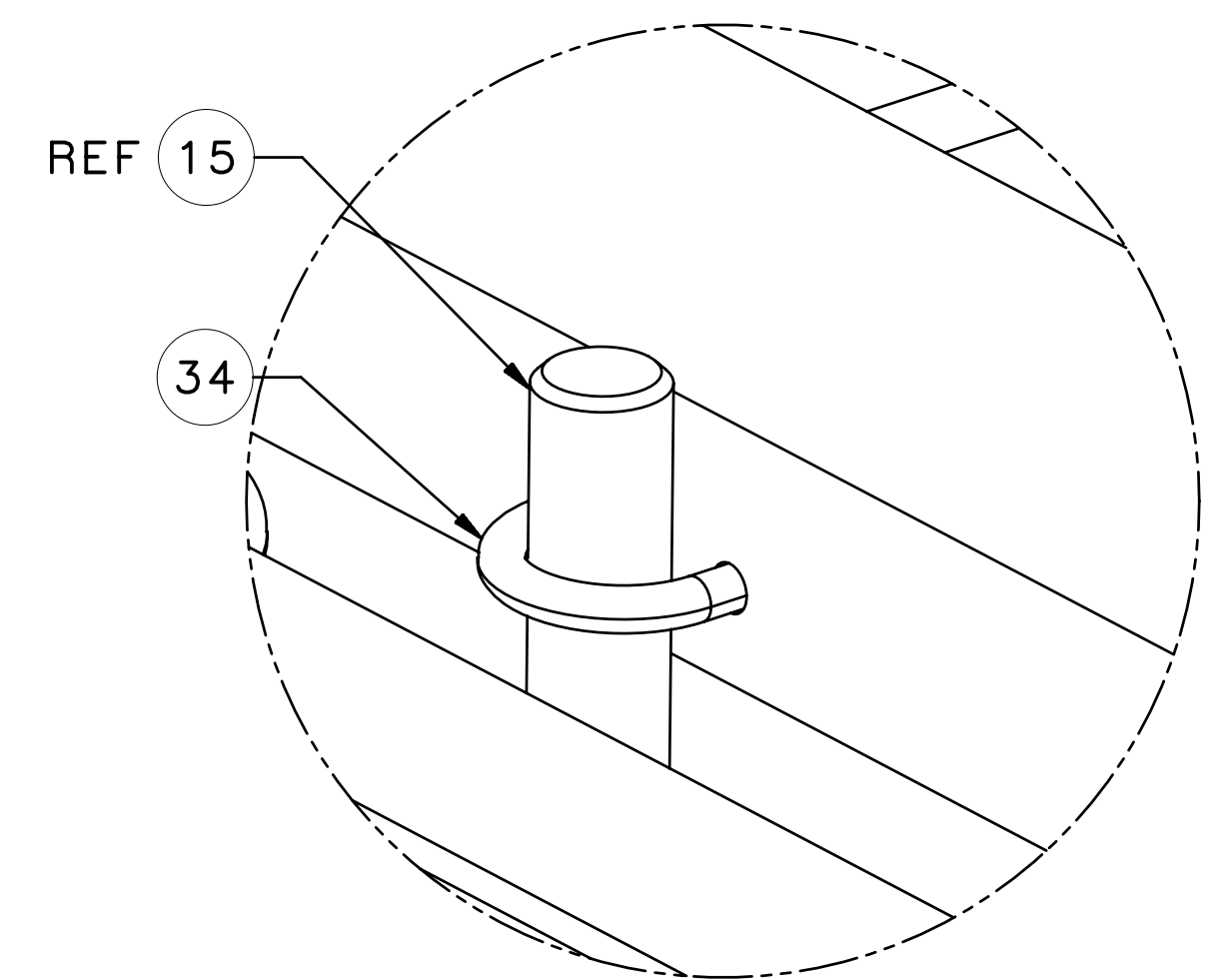


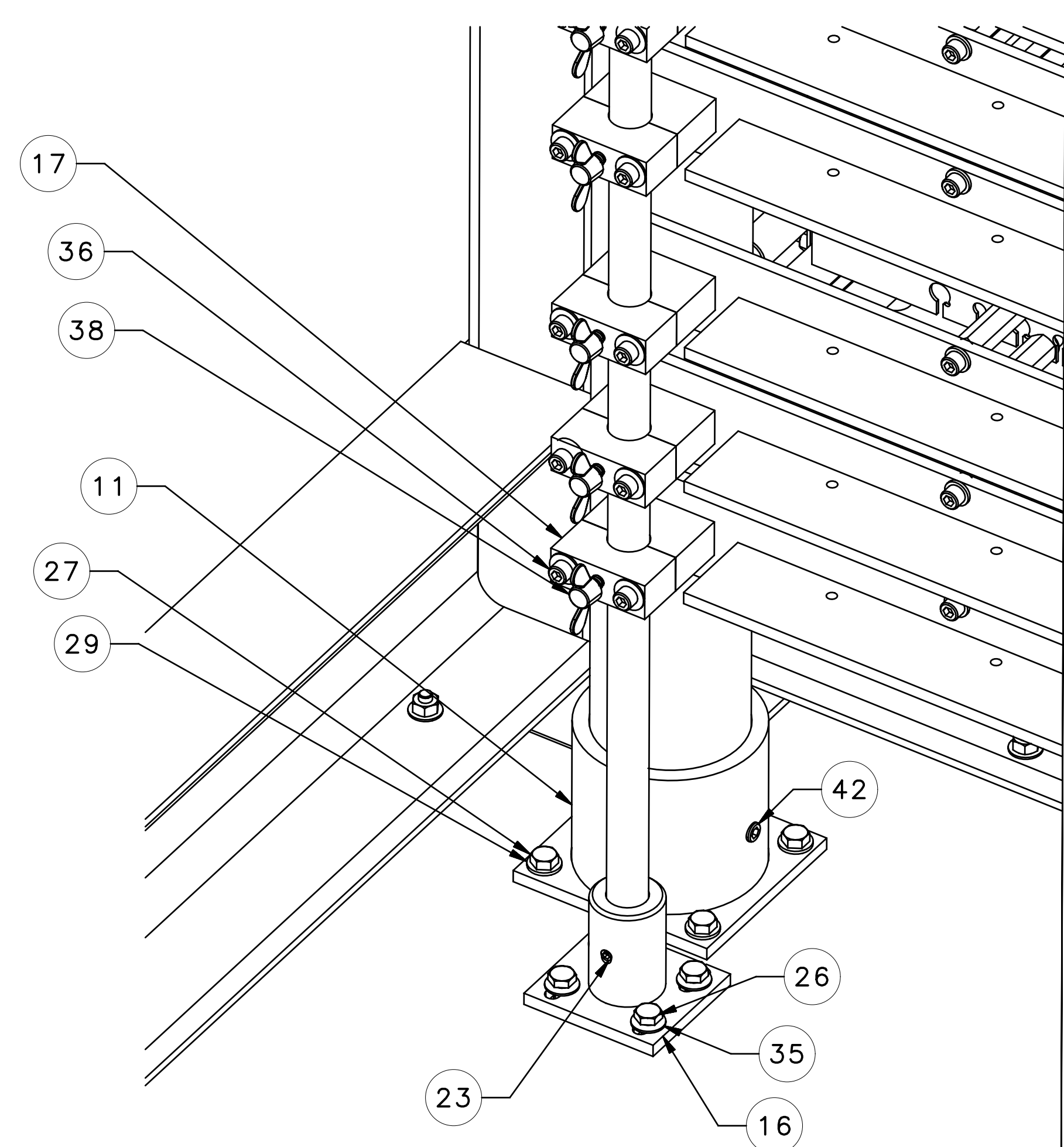
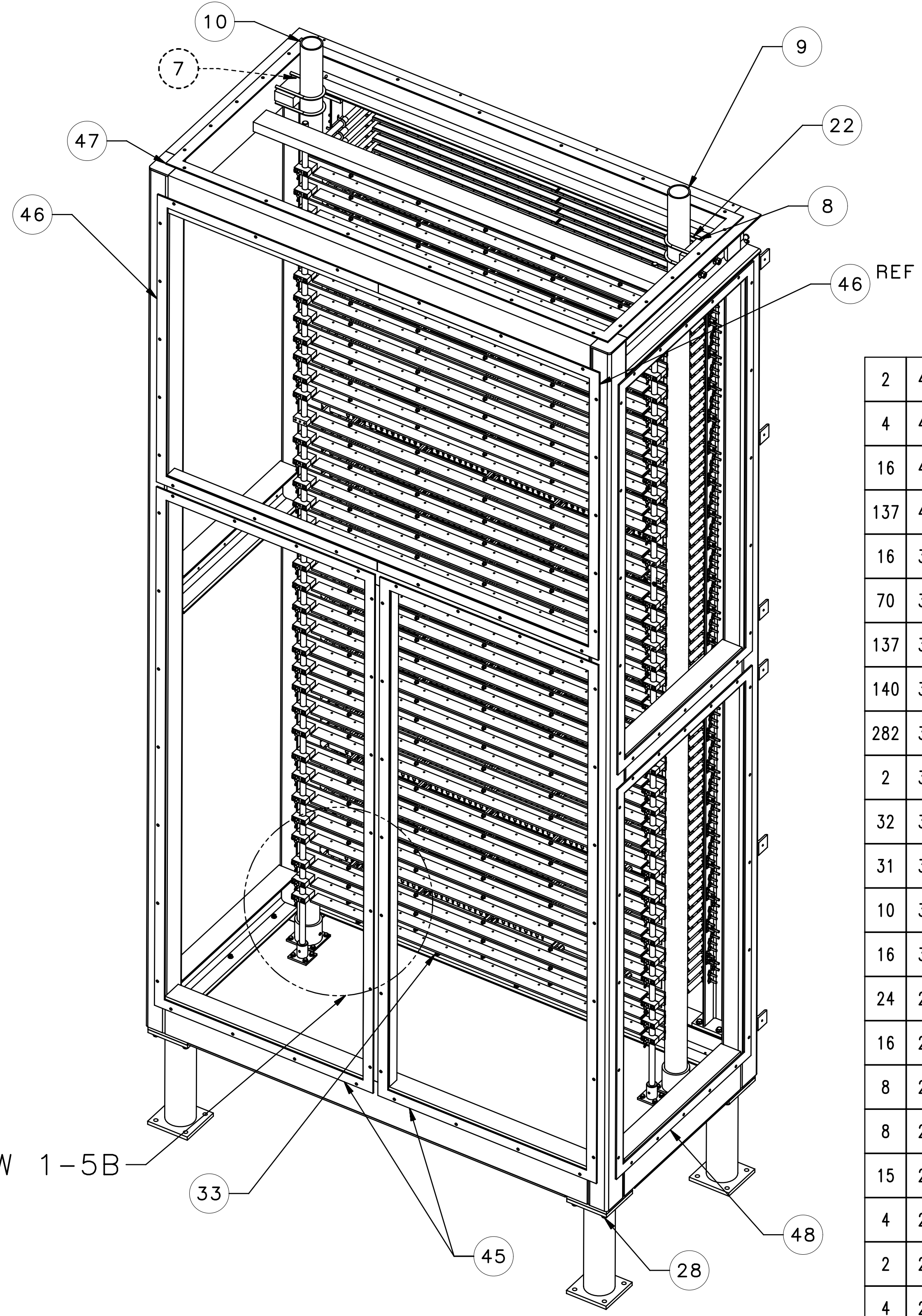
FOR INFORMATION ONLY



- NOTES:
- WEIGHT IS APPROXIMATELY 1,800 LBS.
 - PART TO BE CONDITIONED FOR SAFE HANDLING. REMOVE ALL BURRS AND BREAK SHARP EDGES R.03" MAX UNLESS OTHERWISE SPECIFIED.
 - IN ACCORDANCE WITH THE JEFFERSON LAB ESH&Q MANUAL SUBJECT MATTER EXPERT (SME) SIGNATURES MAY BE REQUIRED.
 - MOUNTING HOLES FOR ITEMS 13 AND 14 ARE TO BE DRILLED AND TAPPED AT ASSEMBLY. SEE PAGE 3 FOR DETAILS.
 - ATTACH ITEMS 45 THRU 48 TO ITEM 4 USING GREY EPOXY 190 ADHESIVE.



DETAIL VIEW 1-5G
SCALE 1:1



DETAIL VIEW 1-5B
SCALE 1:2

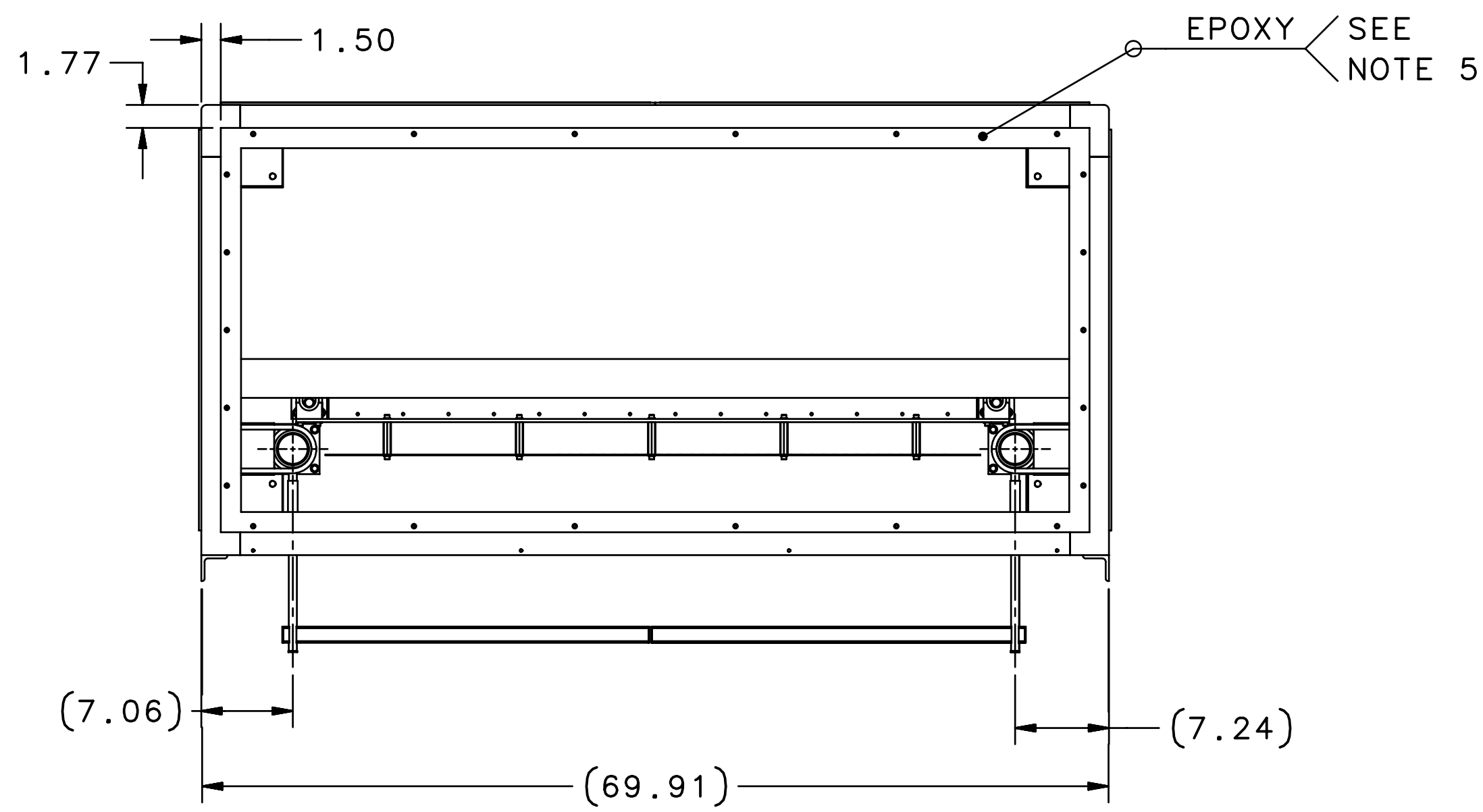
QTY	ITEM NO.	PART OR IDENTIFYING NO.	DESCRIPTION	MATERIAL SPECIFICATION	NOTES
2	43	FASTENAL 0177275	HEX CAP SCREW 3/8-16 X 1.125	STAINLESS STEEL 316	
4	42	FASTENAL 73300	SOCKET SET SCREW 3/8-16 X 0.375	STAINLESS STEEL 18-8	
16	41	FASTENAL 14105	HEX CAP SCREW 3/8-16 X 1.00	STEEL SAE J429 GRADE 8	
137	40	FASTENAL 42003	U-BOLT 3/8 PIPE SIZE, 1/4-20 X 1-1/2 THD LG	STEEL ASTM A307A	
16	39	FASTENAL 71017	FLAT WASHER 3/8 X OD 0.875	STAINLESS STEEL 18-8	
70	38	MCMASER-CARR 92625A112	WING HD THUMB SCREW 1/4-20 X 1.00	STAINLESS STEEL 18-8	
137	37	MCMASER-CARR 3038K27-MOD01	HT RUBBER TUBE - 3/4 OD X 5/8 ID X 5.50 LG	SILICONE RUBBER 50A	
140	36	FASTENAL 79047	SHCS 1/4-20 X 1.50	STAINLESS STEEL 316	
282	35	FASTENAL 78013	FLAT WASHER 1/4 SMALL OD .625	STAINLESS STEEL 316	
2	34	FASTENAL 74619	U-BOLT 1/2 PIPE SIZE, 1/4-20 X 1 THD LG	STAINLESS STEEL 304	
32	33	FASTENAL 71013	FLAT WASHER 1/4 SMALL OD	STAINLESS STEEL 18-8	
31	32	FASTENAL 36101	HEX NUT 1/4-20 GR. A	STEEL ASTM A563 GR. A	
10	31	FASTENAL 33845	FLAT WASHER 3/8 X 1.000 OD THRU-HARDEN PLAIN	STEEL SAE J995 GRADE 8	
16	30	FASTENAL 33117	FLAT WASHER 1/2 X 1.062 OD PLAIN	STEEL ASTM F436	
24	29	FASTENAL 33113	FLAT WASHER 1/4 X OD 0.625	STEEL ASTM F436	
16	28	FASTENAL 23876	SHCS 1/2-20 X 1.25	STEEL ALLOY ASTM A574	
8	27	FASTENAL 14005	HEX CAP SCREW 1/4-20 X 1.00	STEEL SAE J429 GRADE 8	
8	26	FASTENAL 14004	HEX CAP SCREW 1/4-20 X 0.875	STEEL SAE J429 GRADE 8	
15	25	FASTENAL 0177600	SHCS 1/4-20 X 1.125	STAINLESS STEEL 316	
4	24	FASTENAL 0172469	BEVELED WASHER 1/4 X 0.690 OD X .160 THK	STAINLESS STEEL 18-8	
2	23	FASTENAL 0171682	SOCKET SET SCREW 1/4-20 X 0.3125 FLAT PT	STAINLESS STEEL 18-8	
4	22	FASTENAL 0156496	U-BOLT W/NUT 2-1/2 PIPE SIZE, 3/8-16 X 3 THD LG GLV. ST.	STEEL	
278	21	FASTENAL 36401	HEX NUT 1/4-20 PLAIN	STEEL SAE J995 GRADE 8	
67	20	A00000-01-16-4200	ECAL AIR DEVICE ASSY LS		
18	19	A00000-01-16-4100	ECAL PATCH PANEL ASSY 108 CONN		
70	18	A00000-01-16-3900	ECAL AIR DEVICE ASSY RS		
71	17	A00000-01-16-3114	PATCH PNL SPRT BRKT REAR	ALUMINUM 6061-T6	
2	16	A00000-01-16-3113	ECAL PATCH PNL SPRT ROD MOUNT		
2	15	A00000-01-16-3112	ECAL PATCH PNL SPRT ROD	STAINLESS STEEL 304	
1	14	A00000-01-16-3111	ECAL AIR TUBE SPRT ANGLE LS		4
1	13	A00000-01-16-3110	ECAL AIR TUBE SPRT ANGLE WLDMT RS		4
137	12	A00000-01-16-3109	ECAL AIR DEVICE ASSY SPCR	ALUMINUM 6061-T6511	
2	11	A00000-01-16-3108	ECAL AIR MANIFOLD FLANGE MOUNT		
1	10	A00000-01-16-3107	ECAL AIR TUBE RIGHT		
1	9	A00000-01-16-3106	ECAL AIR TUBE LEFT		
1	8	A00000-01-16-3105	AIR TUBE MANIFOLD SPACER LEFT	ALUMINUM 6061-T6511	
1	7	A00000-01-16-3104	AIR TUBE MANIFOLD SPACER RIGHT	ALUMINUM 6061-T6511	
4	6	A00000-01-16-3103	ECAL REAR FRAME LEG WLDMT		
1	5	A00000-01-16-3102	ECAL REAR FRAME BOTTOM PLATE	ALUMINUM 6061-T6	
1	4	A00000-01-16-3101	ECAL REAR FRAME WLDMT		
6	3	A00000-01-16-2900	ECAL PATCH PANEL ASSY 72 CONN		
6	2	A00000-01-16-2800	ECAL PATCH PANEL ASSY 84 CONN		
6	1	A00000-01-16-2700	ECAL PATCH PANEL ASSY 96 CONN		

QTY	ITEM NO.	PART OR IDENTIFYING NO.	DESCRIPTION	MATERIAL SPECIFICATION	NOTES
4	48	A00000-01-16-3116	ECAL LT BARR SIDE PNL GASKET	BUNA-N 60A	5
1	47	A00000-01-16-3117	ECAL LT BARR TOP PNL GASKET	BUNA-N 60A	5
3	46	A00000-01-16-3118	ECAL LT BARR PNL UPR BACK GASKET	BUNA-N 60A	5
2	45	A00000-01-16-3115	ECAL LT BARR PNL GASKET LWR BACK	BUNA-N 60A	5
2	44	MCMASER-CARR 9545K136	SBR RUBBER TAPER PLUG	SILICONE RUBBER 50A	

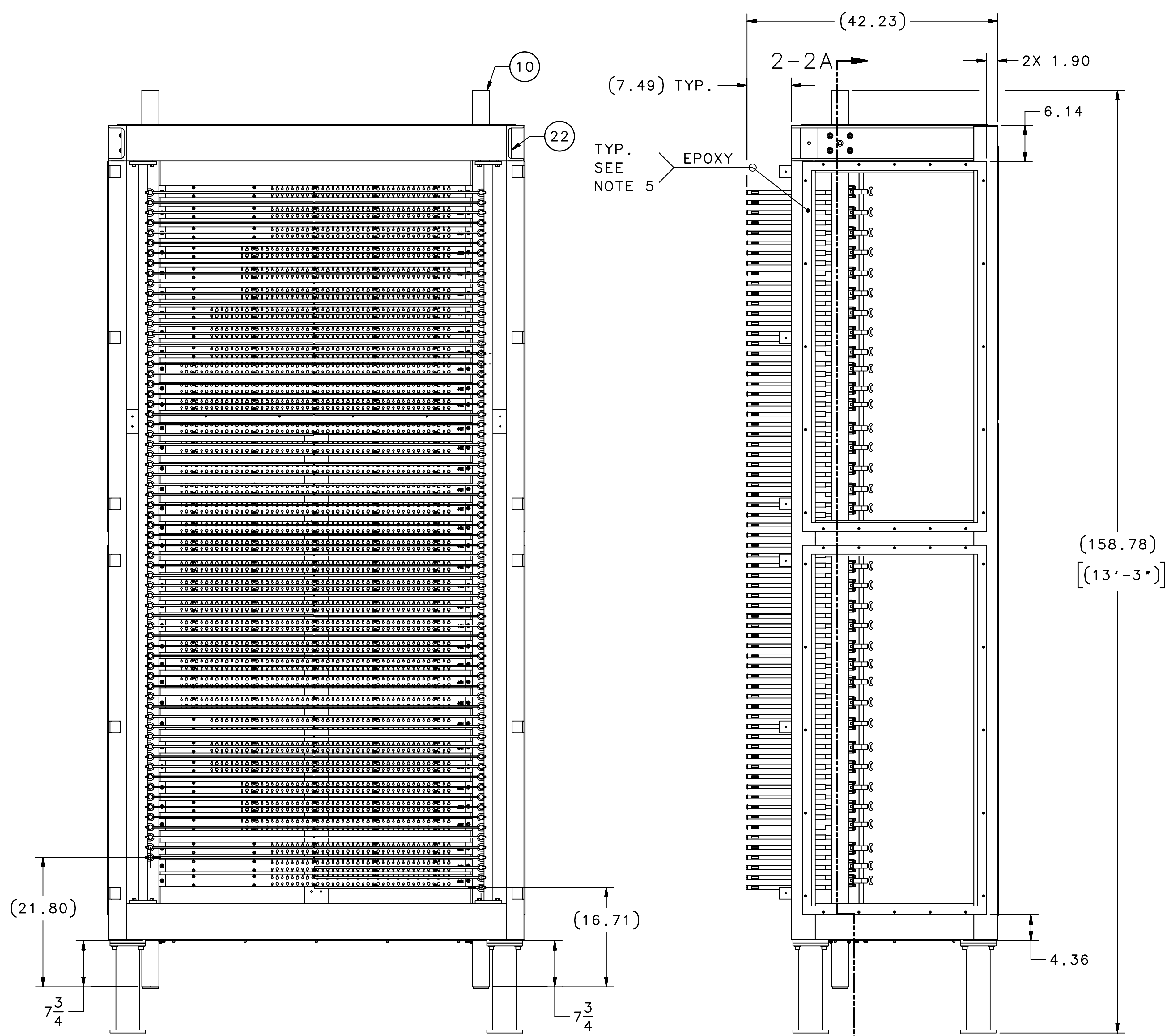
UNITED STATES DEPARTMENT OF ENERGY
Jefferson Lab
Thomas Jefferson National Accelerator Facility
Newport News, Virginia

HALL A - A00000 - TEMPLATE DETECTOR - SBS PROGRAM
ECAL ASSY
ECAL REAR FRAME ASSY

DATE: 2022.12.19
SCALE: 3:16
REV. 1 OF 3



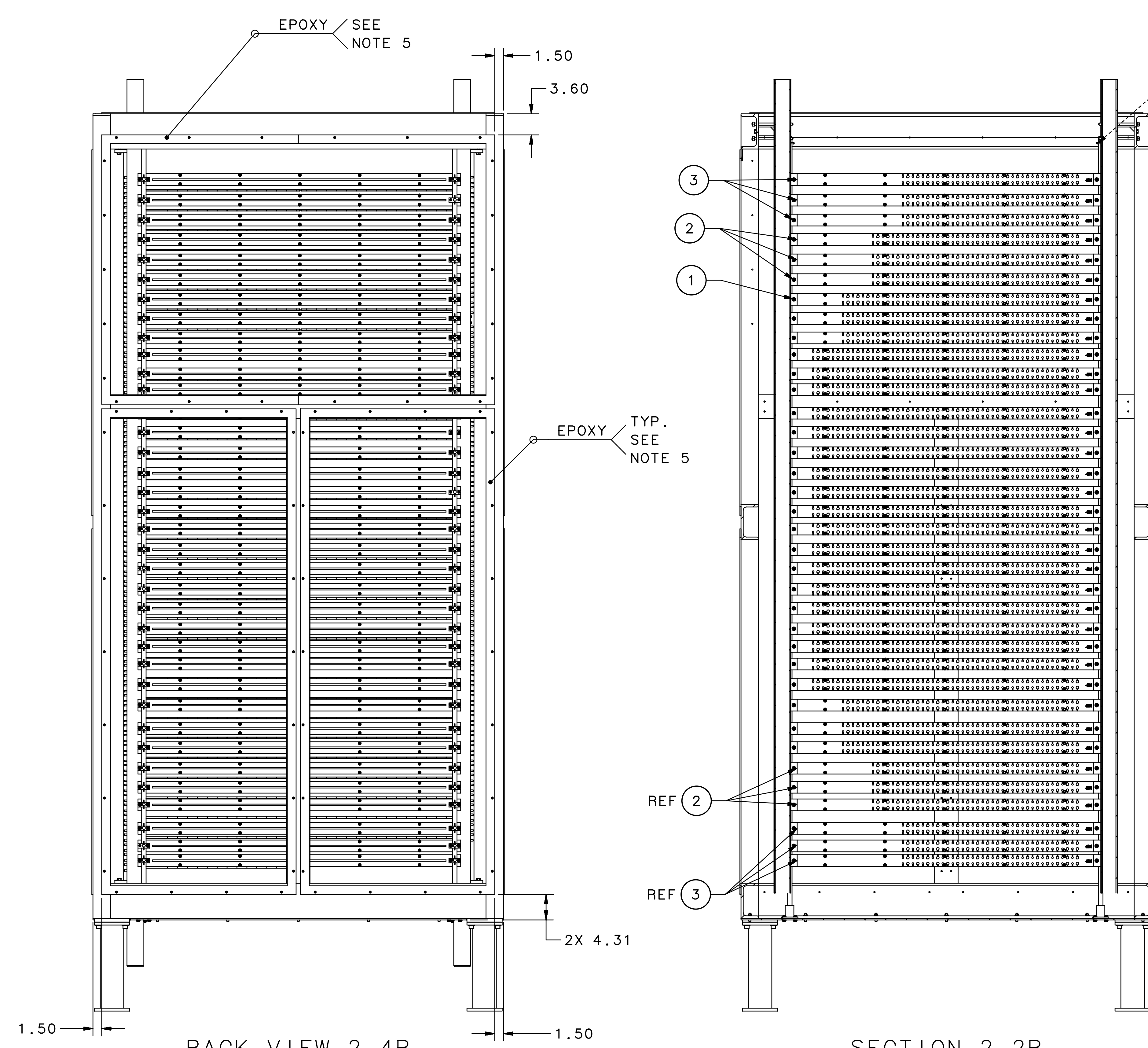
TOP VIEW 2-7F



FRONT VIEW 2-7B

RS VIEW 2-5B

(158.78)
[[13'-3"]



BACK VIEW 2-4B

SECTION 2-2B

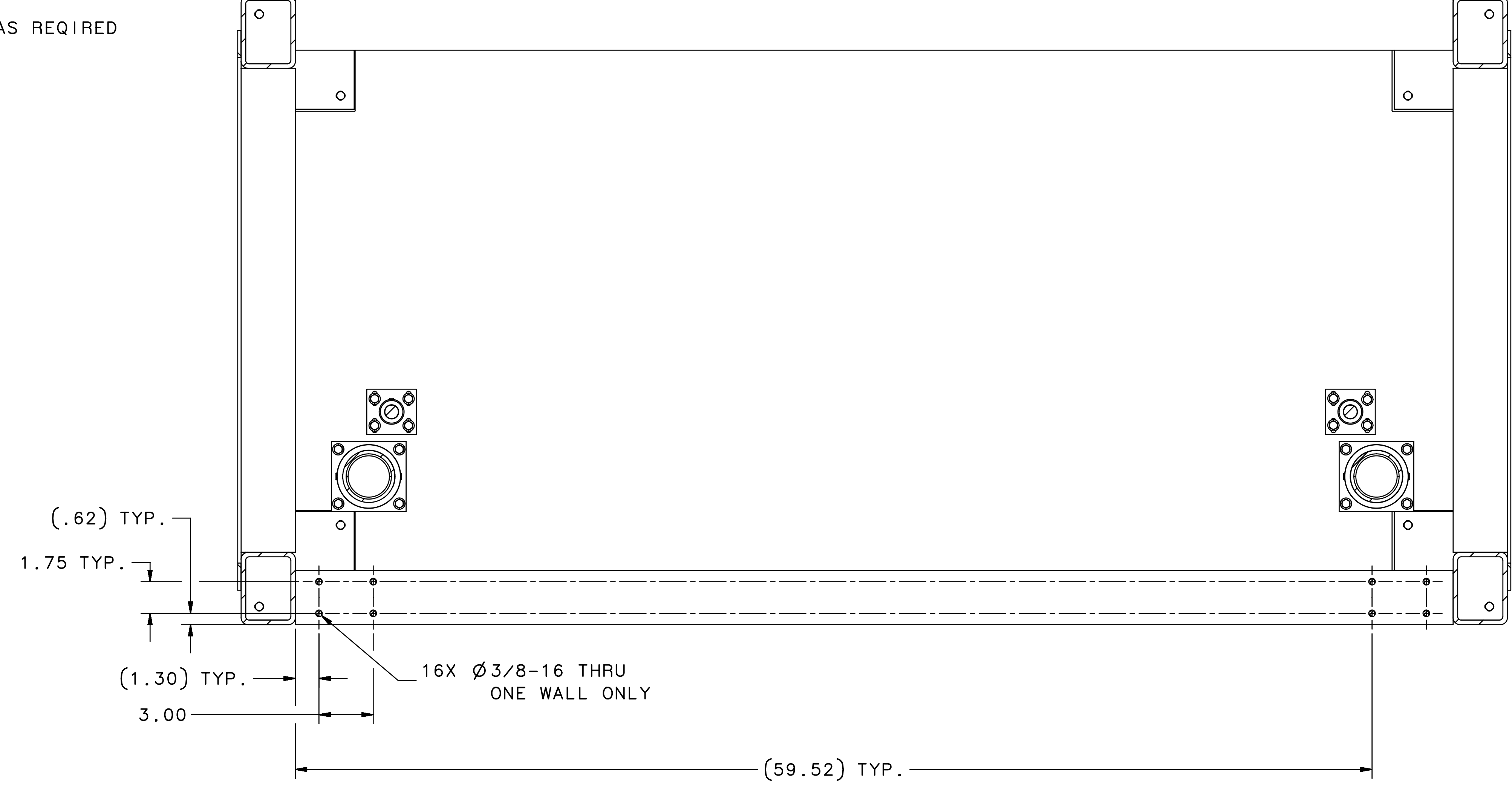
8 7 6 5 4 3 2 1

SHIM AS REQUIRED
(1/8) TYP.

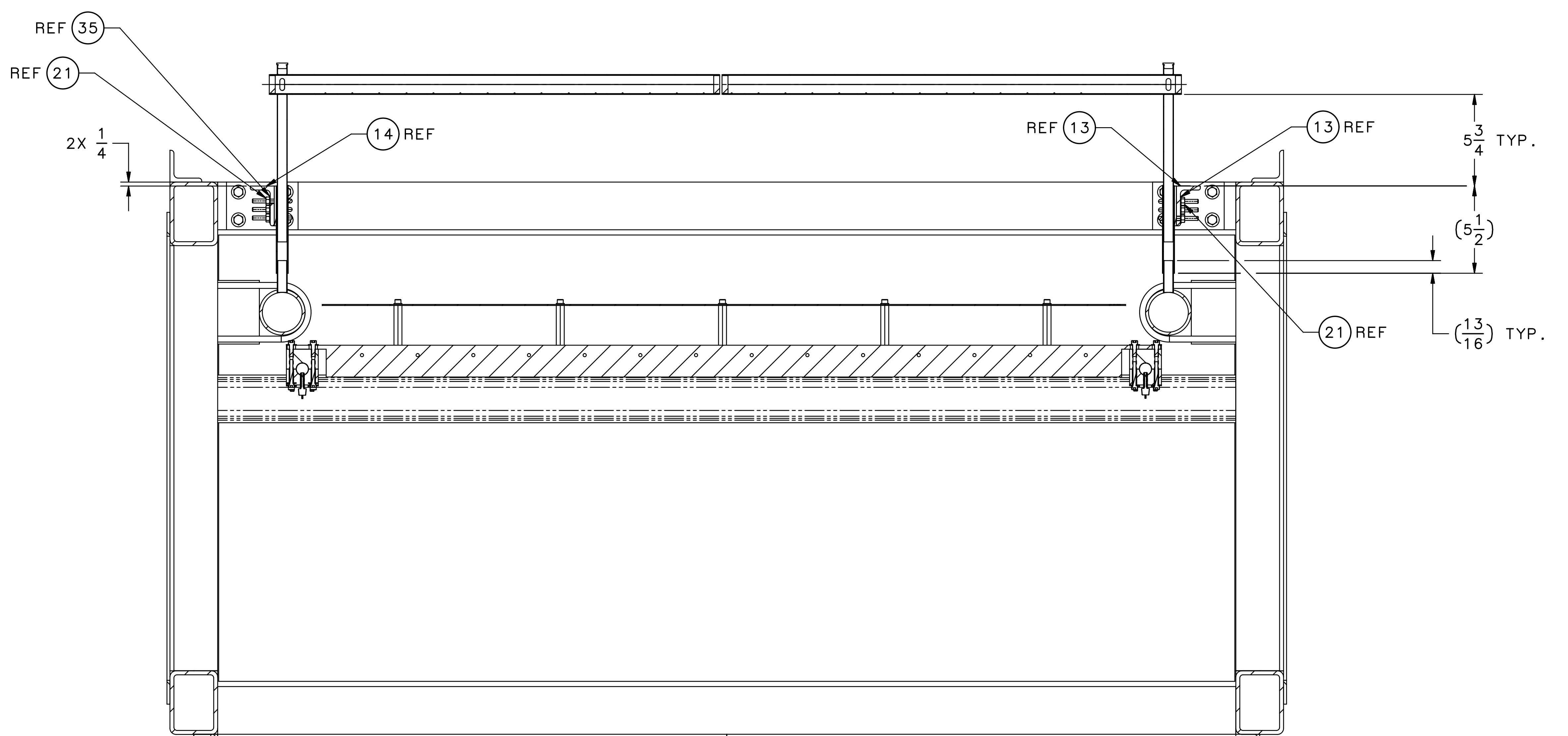
3-3A

3-3E

2 1/16 2 1/4
FRONT VIEW 3-7C



SECTION 3-3E
SCALE 1:4



SECTION 3-3A
SCALE 1:4

8 7 6 5 4 3 2 1