

Installation procedure for the electronic panel

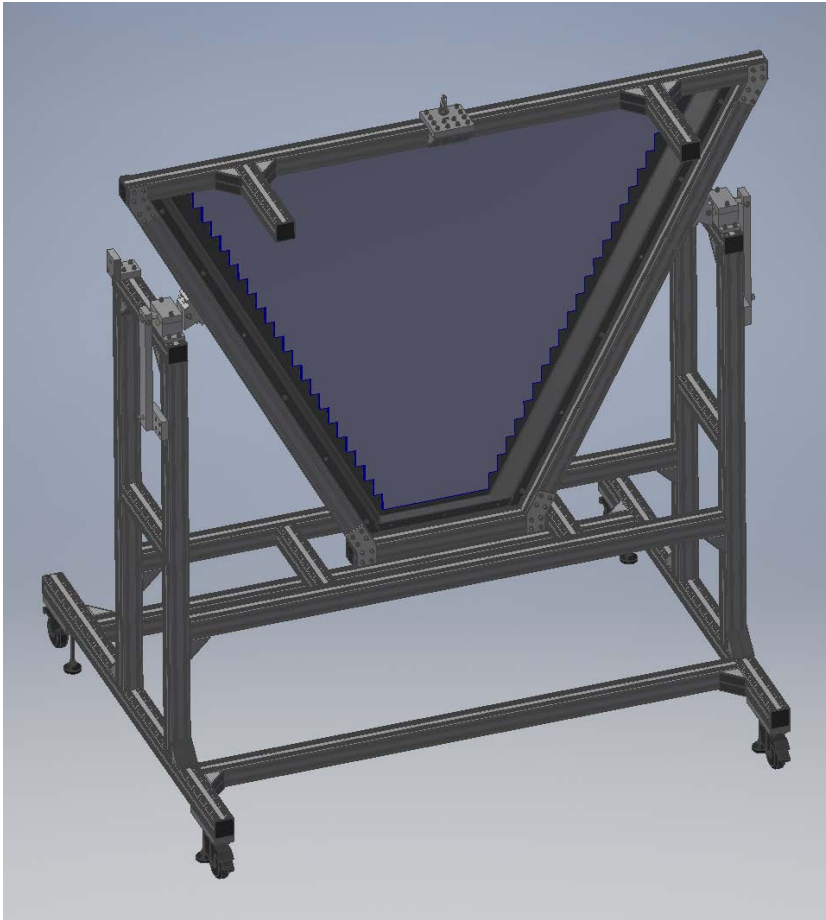
G. Fuga, D. Orecchini, S. Tomassini

Notes and recommendations

- The panel will be installed in the RICH with FE electronics mounted and fully cabled, with MAPMT window uncovered
- The panel must be handled with great care to avoid damages to the MAPMTs
- Use powder free nitrile gloves during all the phases of the assembly procedure
- The expected weight is about 120 kg

Electronic panel installation

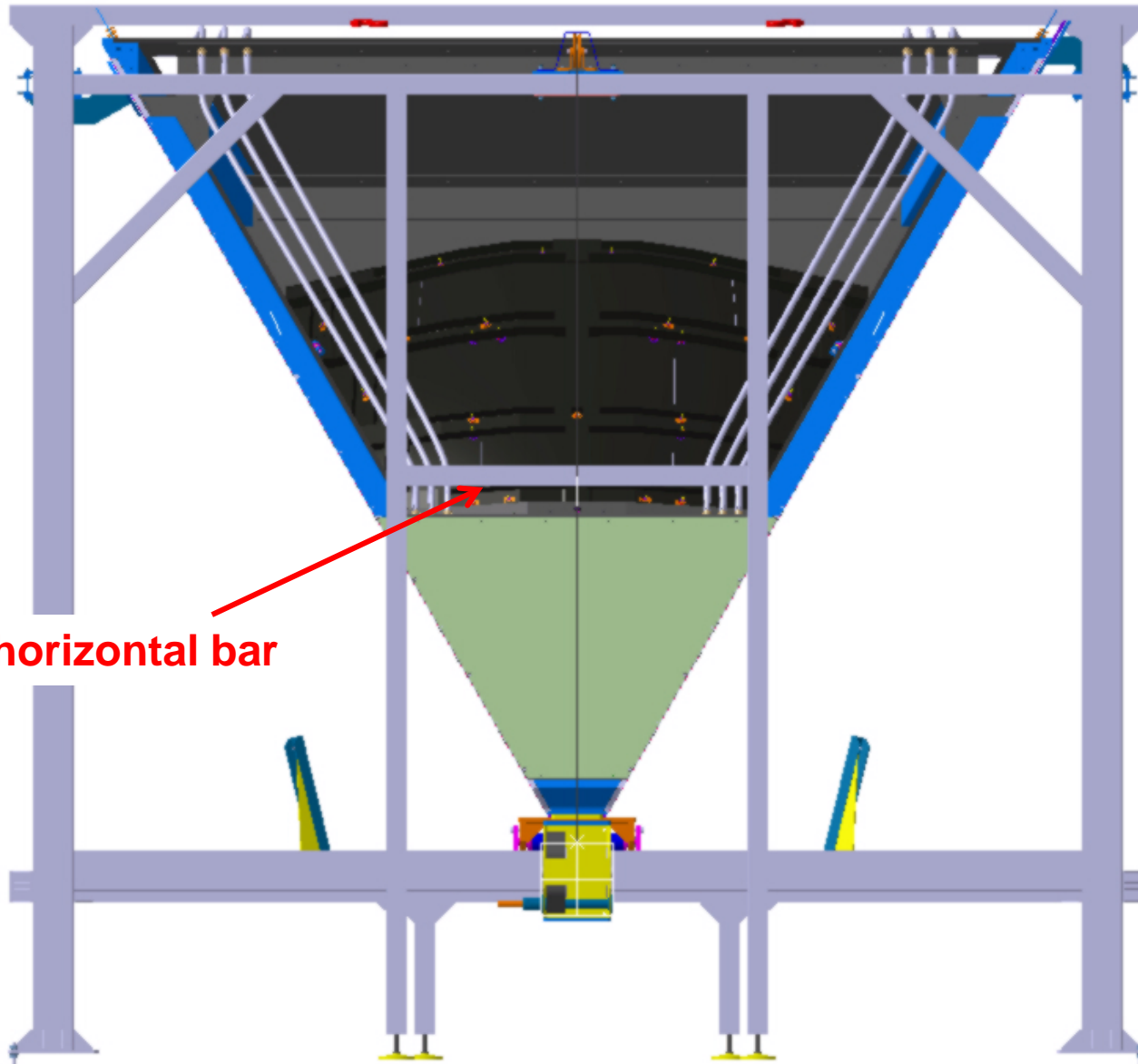
Front side: MAPMT window



Back side: FE electronics



Preparation of the assembly structure



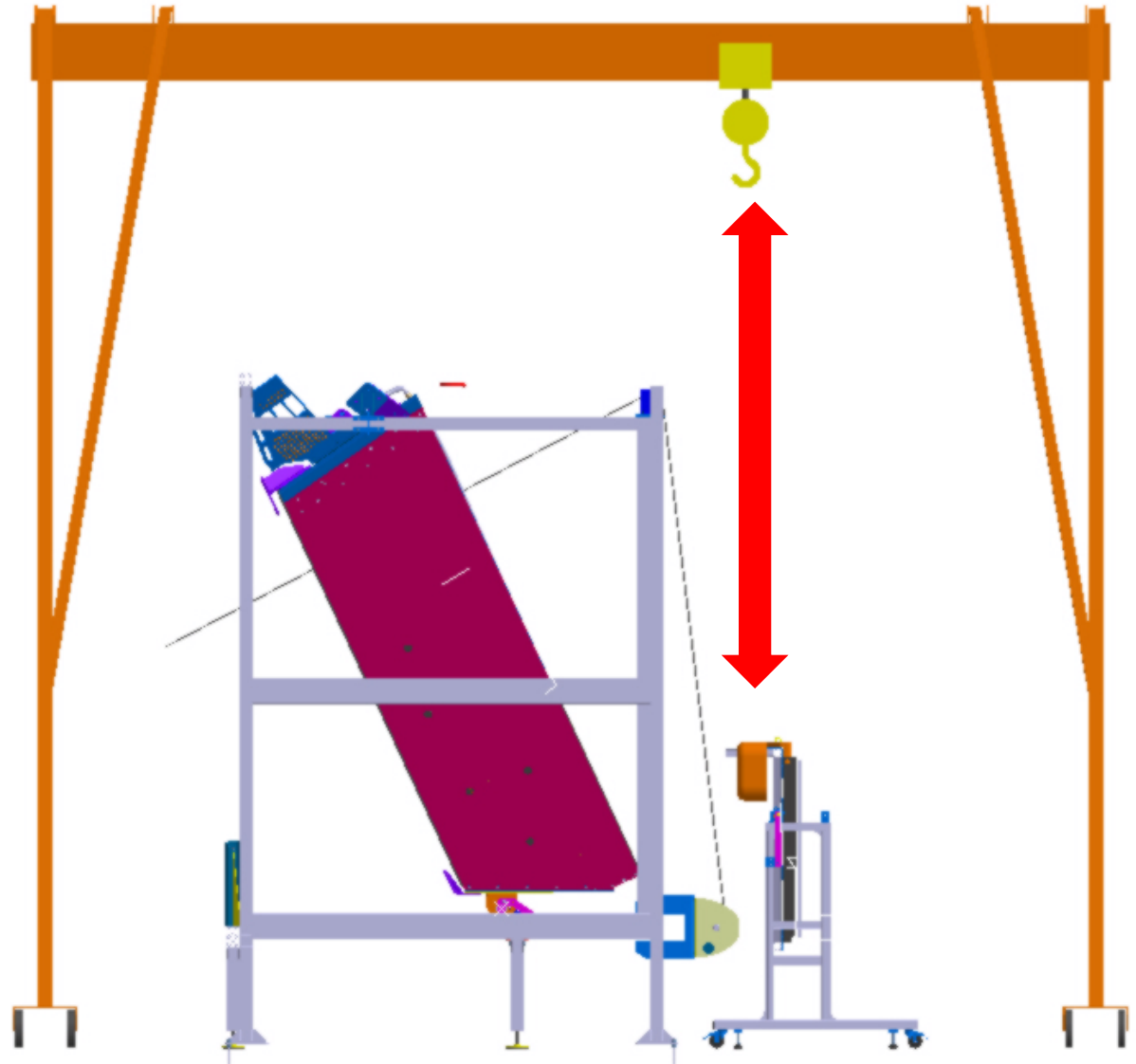
Remove the horizontal bar

Lifting the panel - 1

Bring the electronic panel support in front of the exit window of the RICH

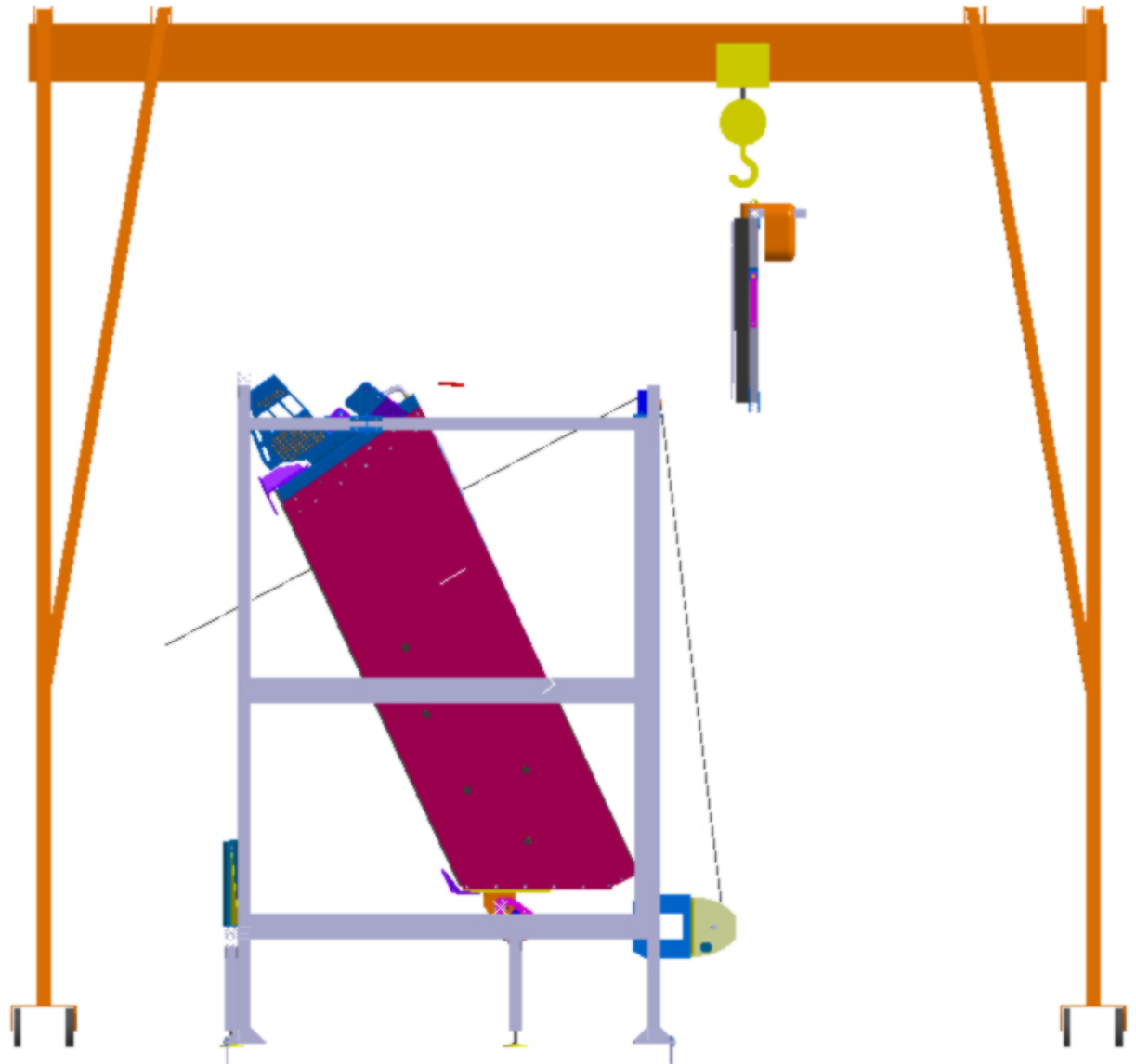
Hook the panel frame eyebolt to the crane

Then release the frame from the support

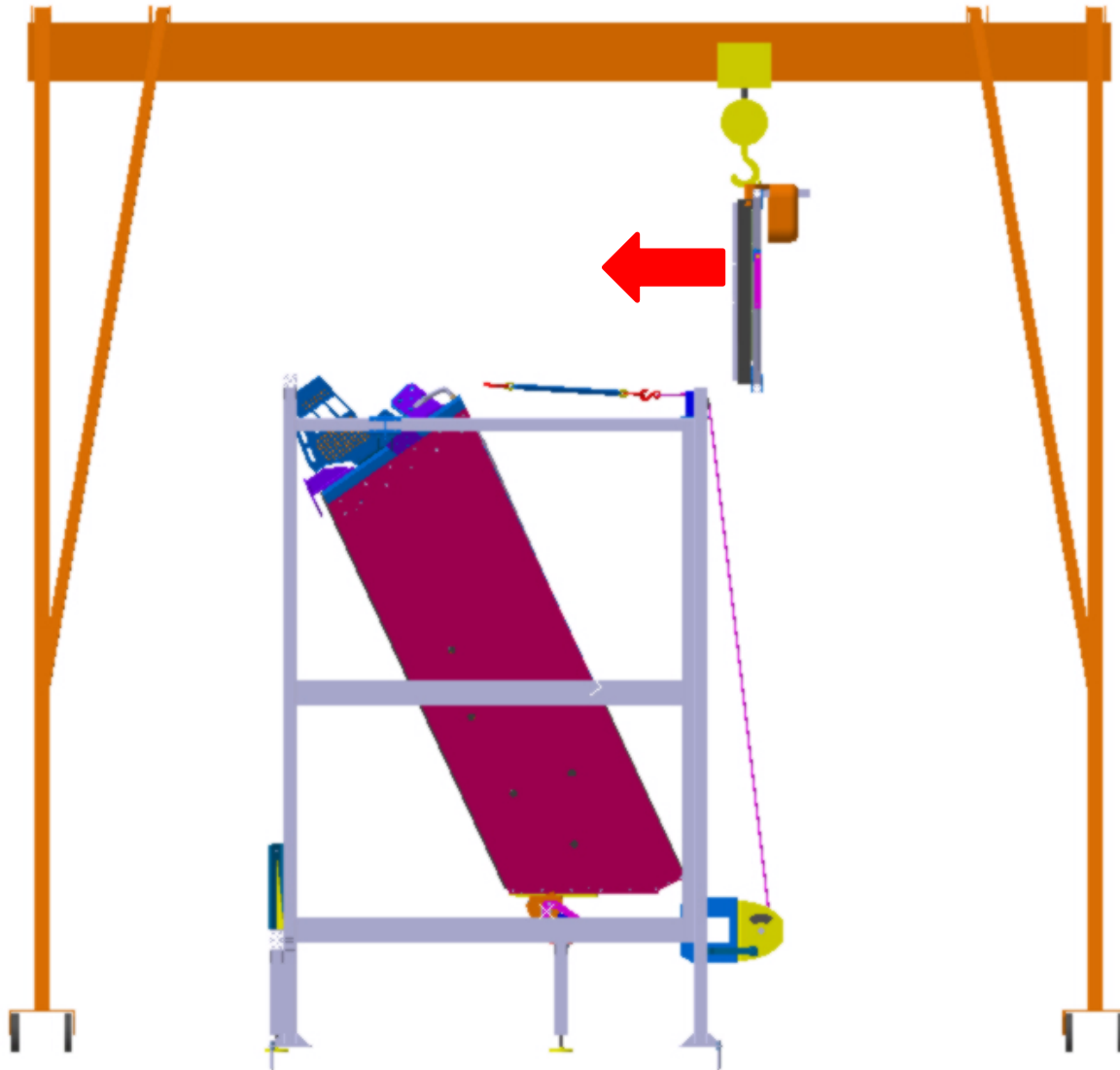


Lifting the panel - 2

Lift the panel to climb
over the upper beam of
the assembly structure

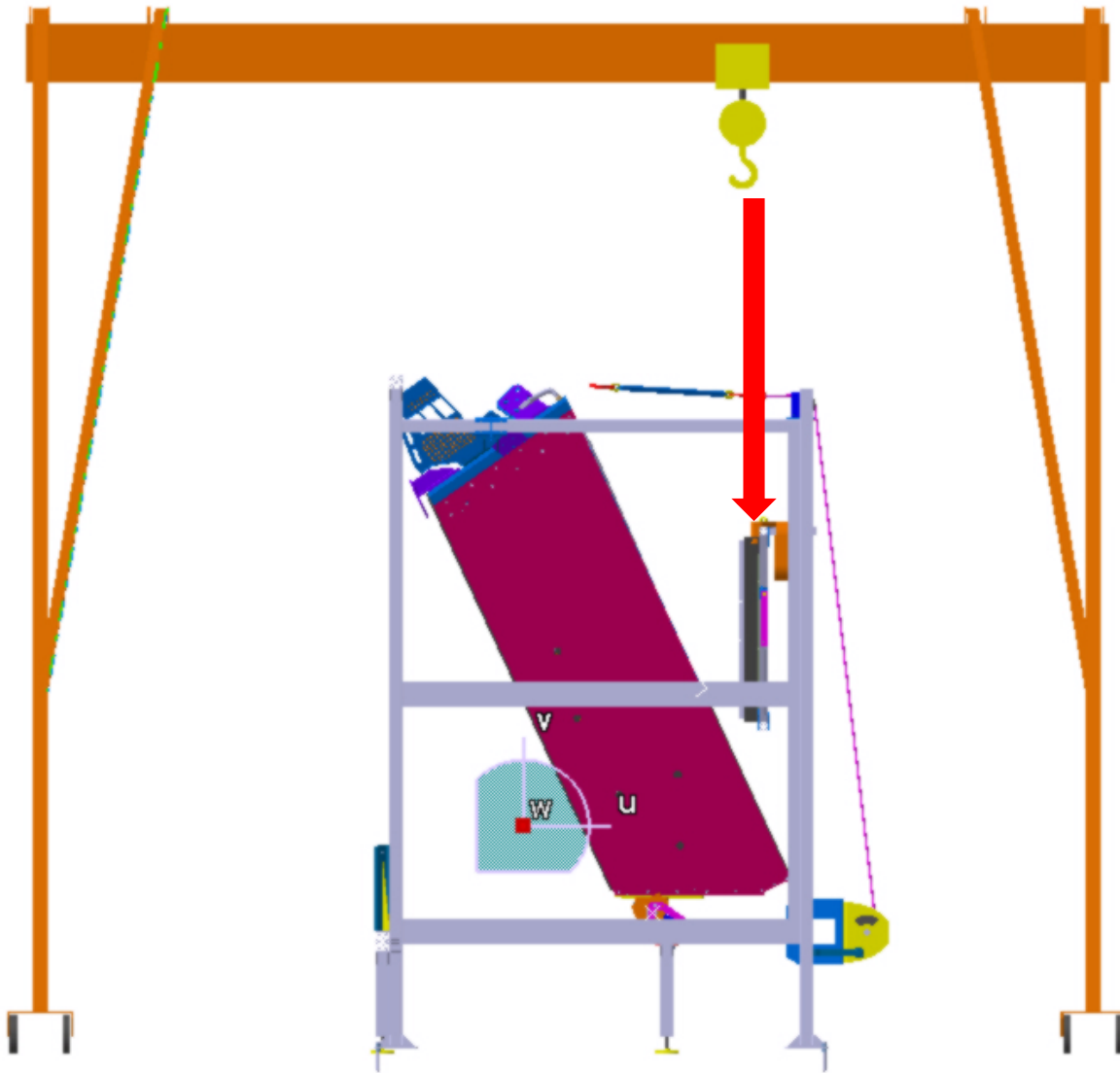


Lifting the panel -3



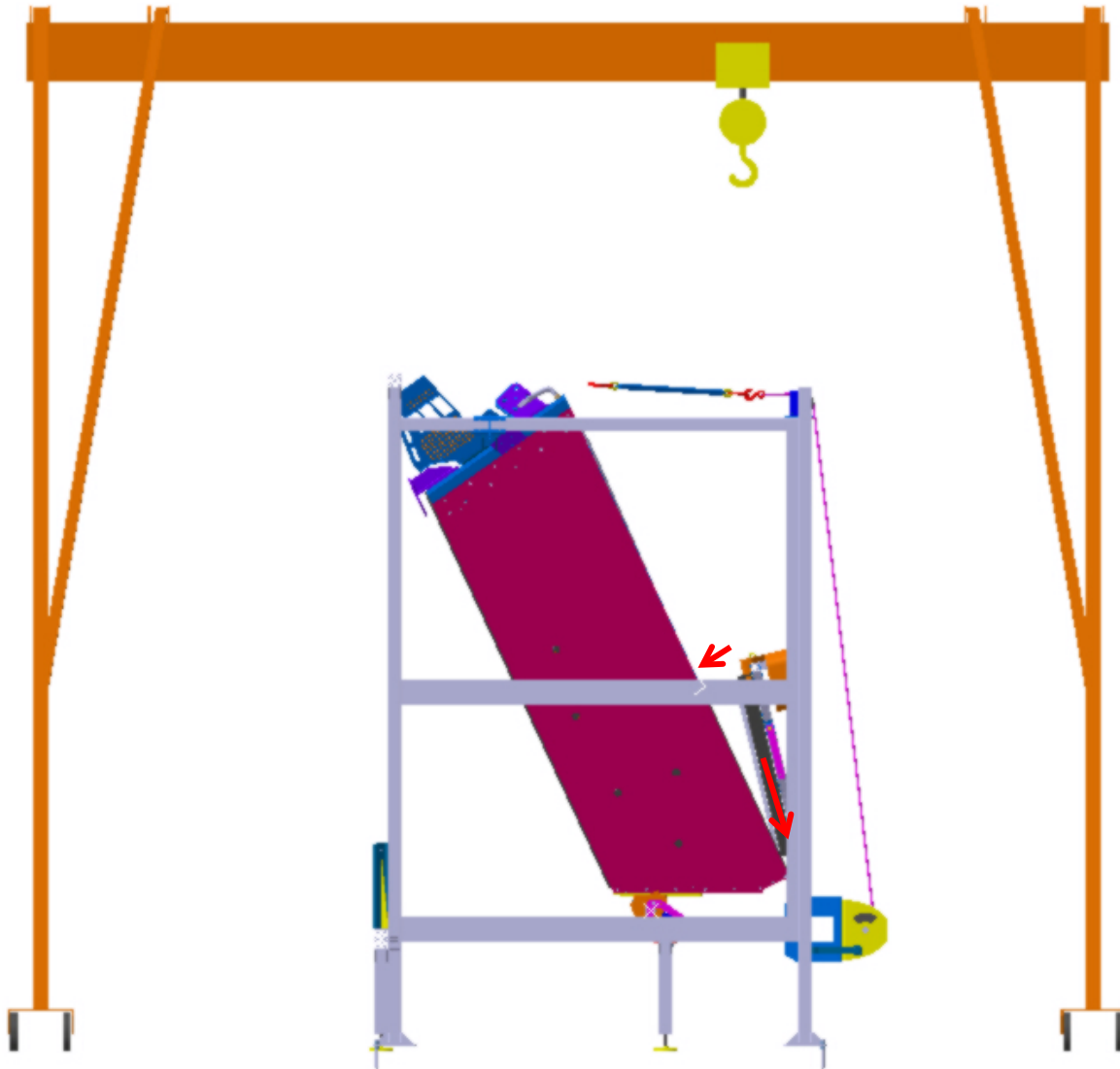
Move forward the crane hook beyond the upper beam of the assembly structure

Lowering the panel - 1



Lower the panel toward
the bottom of the RICH

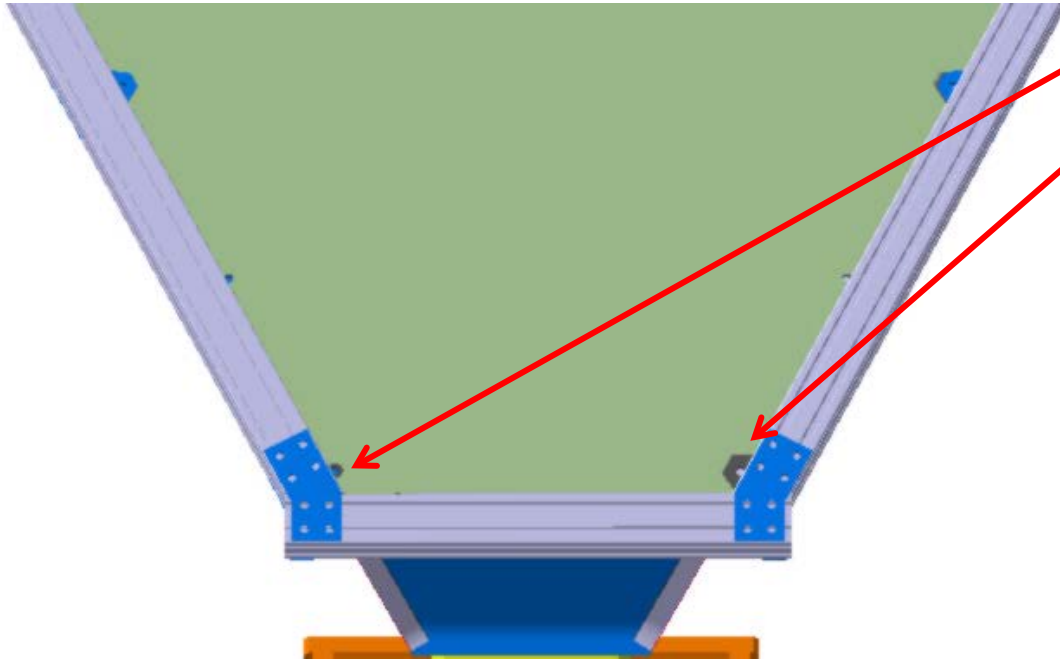
Lowering the panel - 2



Lean the panel to the bottom of the RICH

Rotate the panel to insert it in the bottom of the RICH

Securing the panel to the RICH



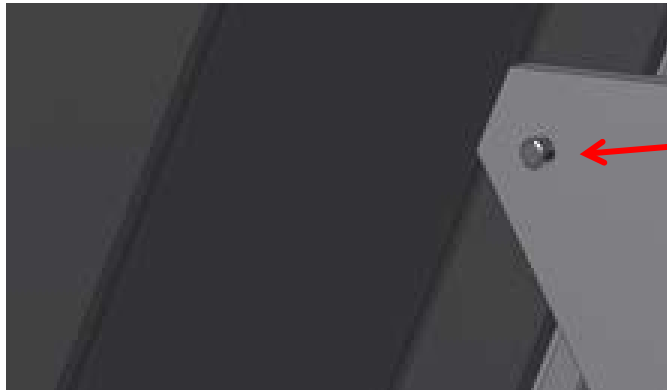
Put in place the two lower screws to fix the panel to the RICH

Leave the screws loose

Releasing the frame - 1

Unscrew the brackets from the panel

head of the screw on the external side



screwed hole on the bracket

Releasing the frame - 2

**Unscrew all the brackets
from the frame**

**Remove the supporting
frame with the crane**

**Secure all the screws on
the RICH**

