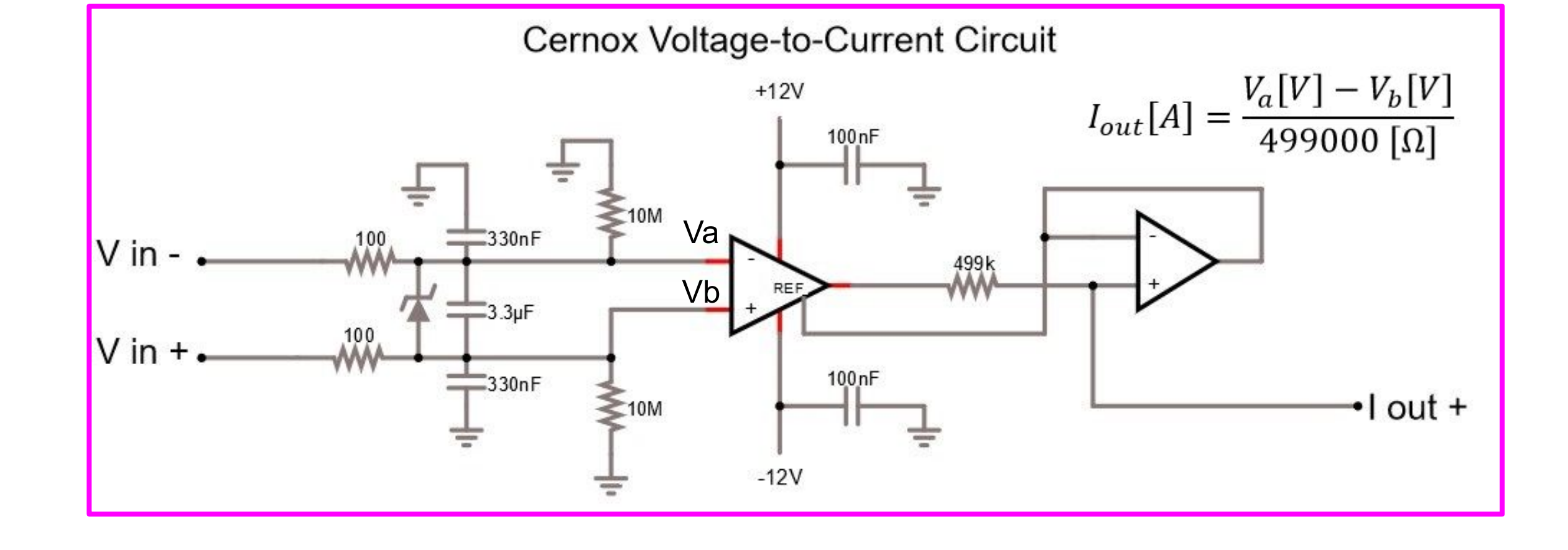
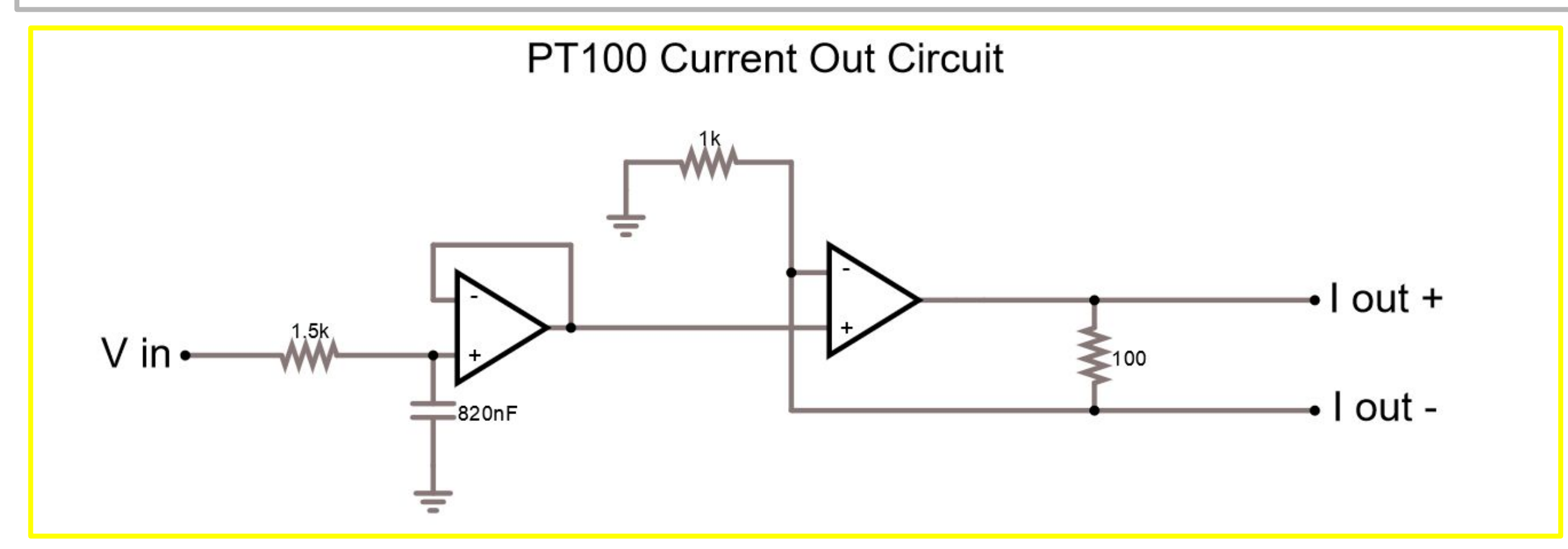
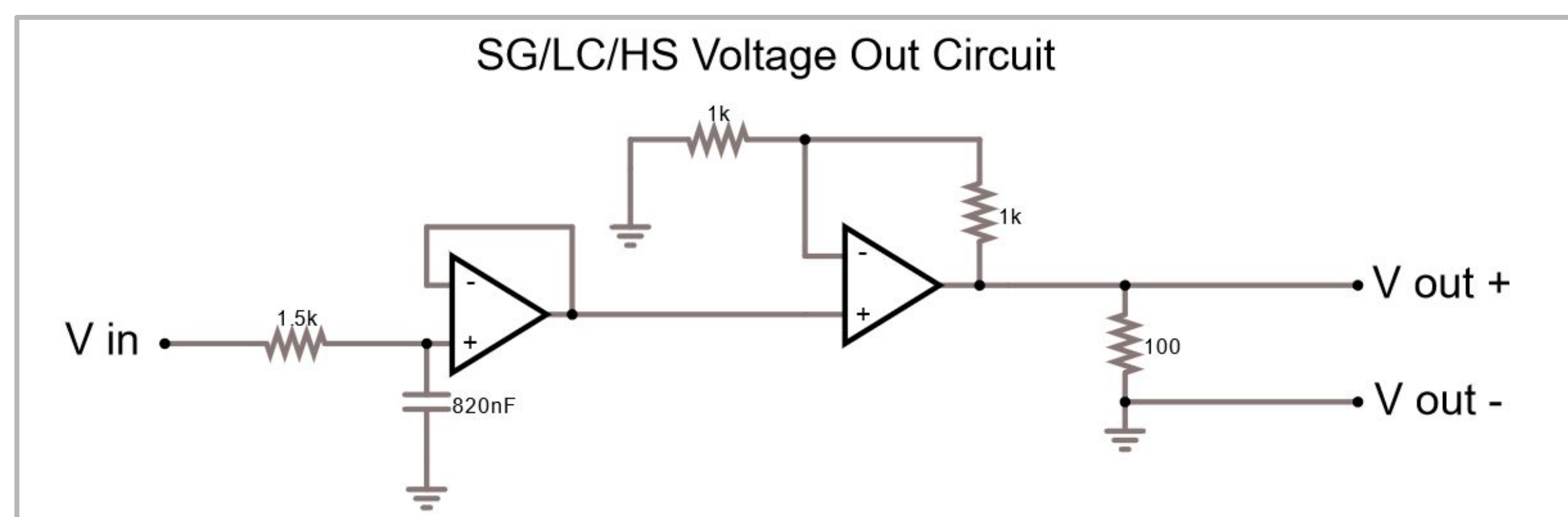
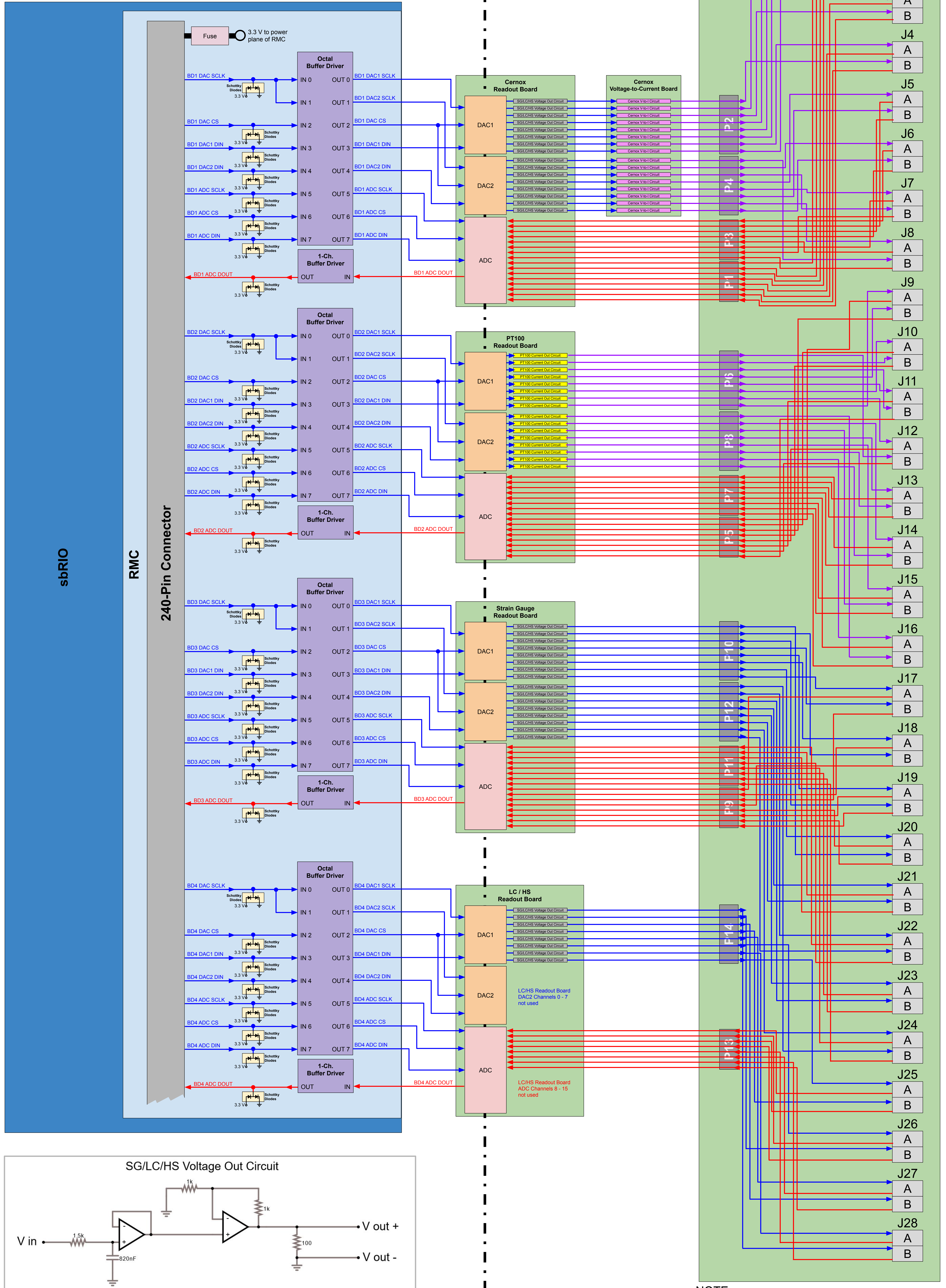


← DIGITAL SIGNALS | ANALOG SIGNALS →

Abbreviation Reference
 SCLK → Serial Clock
 CS → Chip Select
 DIN → Data Input (sbRIO-to-device)
 DOUT → Data Output (device-to-sbRIO)
 BD → Board

— Voltage
 — Current
 — ADC Voltage

NOTE: All analog signals also have a paired ground wire that is not shown in diagram for simplicity



Circuit or Component	Output Type	Minimum Output	Maximum Output
DAC	Voltage	0 V	5 V
SG/LC/HS Voltage Out	Voltage	0 V	10 V
PT100 Current Out	Current	0 mA	5 mA
Cernox Voltage-to-Current	Current	0 μA	11.3 μA

NOTE: DB9 Adapter Board J1 - J28 are shown as plain rectangles to allow for more simplified diagram. In reality, J1 - J28 are 9-pin D-sub (DB9) connectors.

Actual DB9 Connector Pinout on MSELV Chassis

