



Detector Support Group

We choose to do these things "not because they are easy, but because they are hard".

Weekly Report, 2023-11-29

Hall A – Moller

Brian Eng

- Discussions on what (if any) changes to make from prototype tests done on production supplies
 - ★ Currently, no pulse width modulation monitoring on power modules
 - ★ Lack of fault indication on fans

Hall C – NPS

Mary Ann Antonioli, Peter Bonneau, Aaron Brown, Pablo Campero, Brian Eng, and Mindy Leffel

- Setting up LabVIEW code test stand
 - ★ Contacted computer center to change IP address of the spare cRIO to one on the Hall B development subnet; set up a softIOC on the Hall B development subnet
 - ★ Tested using existing Phoebus screens on Hall B Windows machine; some errors, but the IOC works
- Troubleshooting issues with spare Keysight mainframe
 - ★ Unable to communicate with mainframe via USB or Ethernet; it appears that the IP address and hostname no longer exist
 - ★ Contacted computer center
- Modified common model to be used in Ansys Fluent and Ansys Mechanical, using SpaceClaim

Hall D – FCAL2

Mindy Leffel

- Populated 45 PMT bases; 875/1750 completed
 - ★ Cut 400 wires for bases

EIC – Beampipe Thermal Test

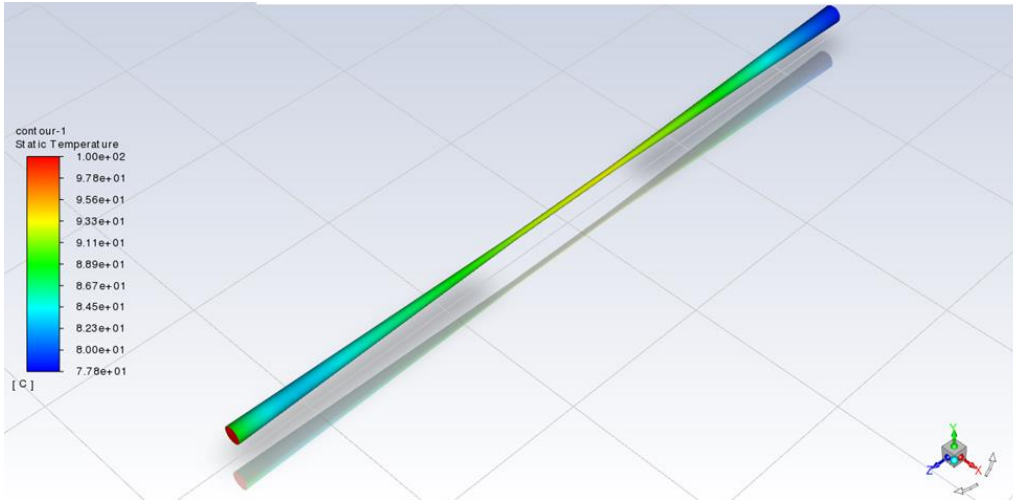
Pablo Campero

- Set up Ansys Fluent with thermal boundary condition
- Ran simulation in steady state analysis mode; converged at 142 iterations

Detector Support Group

We choose to do these things "not because they are easy, but because they are hard".

Weekly Report, 2023-11-29



Isometric view of contour temperature for 9-m beampipe

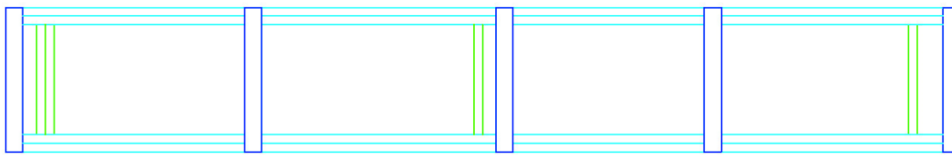
- Measurement of temperatures for critical points of the model is in progress

EIC - DIRC

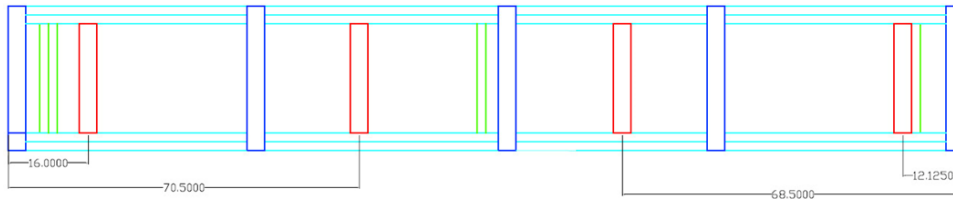
Peter Bonneau, Brian Eng, George Jacobs, Tyler Lemon, and Marc McMullen

- Modified quartz bar horseshoe clamp layout for better 3D printing
 - ★ Initial file had clamp in closed position; changing layout to open position allowed fewer supports, making post-processing of parts easier
- DAQ PCB
 - ★ Completed netlist and pads check and final design checkout
 - ★ Prepared files for manufacturing; sent for manufacturers check and quote
- Discussed crate shipping with Jlab shipping and receiving department

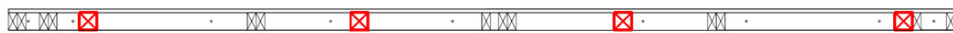
Underside of Inner Crate Base



Underside of Inner Crate Base with 4"x4" Hard Point Reinforcements for Air Springs and Brackets



Locations of 4"x4" Hard Points



Side View of Locations of 4"x4" Hard Points

Locations of inner crate base hard points for air springs



Detector Support Group

We choose to do these things "not because they are easy, but because they are hard".

Weekly Report, 2023-11-29

- Phoebus alarm system stability test in progress, using EPICS softIOC EIC DIRC simulator

EIC – RICH

Tyler Lemon

- Submitted PRs for components for a prototype UV reflectivity test station

DSG

Tyler Lemon

- Discussed with ESH the safety and health considerations for 3D printer
- Wrote task hazard analysis for 3D printer
- Designed and fabricated lock clasp for printer enclosure
 - ★ ESH requested that cabinet be locked to ensure that only expert users have access while printer is running